

**AQUA  
GALLERY**

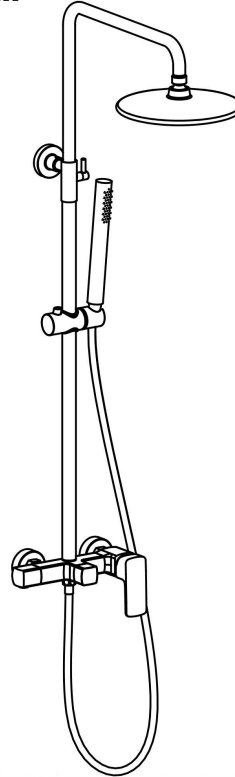
# User's Manual

---



# INSTALLATION INSTRUCTIONS

## Installation Manual



**IAPMO RESEARCH AND TESTING, INC.**  
500 East Philadelphia Street, Orange, California 92666 • (949) 472-4100 Fax (949) 472-4244 • www.iapmo.org

**CERTIFICATE OF LISTING**

The most updated information on this certificate of listing is available online at [iapmo.org](http://iapmo.org)

**Effective Date:** November 2013      **Valid Through:** August 2014

**Product:** Flushing Flush Valve Fixture      **File No.:** 4137


**Issued To:** Roca Inc.      **Manufacturer:** Roca Inc., 346, 4th St., Valencia, CA 91355, USA  
**Model:** R10000  
**Country:** China

**Identification:** Flushing flush valve fixture employing this standard shall be marked with the manufacturer's name, trademark, or other mark as in the case of private labeling, the name, trademark, or other mark of the customer for whom the fixture was manufactured; the marking shall be accomplished by one of a permanent mark or by placing a permanent label on the product. Marking on plastic flush valves shall be visible after installation.

**Requirements, specifications, and additional information:** Flush valves and valves shall have identifiable temperature control settings to allow the fixture to be installed by using "FRESH", "WARM", "HOT", etc.), by number, or graphically.

**Package shall be marked with the manufacturer's name, trademark, or other mark as well as the model number and, in the case of private labeling, the name, trademark, or other mark of the customer for whom the fixture was manufactured as well as the model number.**

*David McHenry*      *Ron Chong*  
 Chairman, Product Certification Committee      CEO, The IAPMO Group



**IAPMO RESEARCH AND TESTING, INC.**  
500 East Philadelphia Street, Orange, California 92666 • (949) 472-4100 Fax (949) 472-4244 • www.iapmo.org

**CERTIFICATE OF LISTING**

The most updated information on this certificate of listing is available online at [iapmo.org](http://iapmo.org)

**Effective Date:** November 2013      **Valid Through:** October 2017

**Product:** Flushing Valve Components      **File No.:** 4205

**Issued To:** Roca Inc.      **Manufacturer:** Roca Inc., 346, 4th St., Valencia, CA 91355, USA  
**Model:** R10000


**Identification:** Manufacturer's name or trademark and IAPMO certification mark. Special note on label: "For use with water in exposed locations only."

**Characteristics:** Flushing valve components manufactured in various sizes, lengths and materials shall be marked with the IAPMO certification mark. Marking shall be accomplished by one of a permanent mark or by placing a permanent label on the product. Marking on plastic flush valves shall be visible after installation.

**Requirements listed on this certificate have been tested by an IAPMO RPT recognized laboratory. This certification has been granted based upon the laboratory's compliance to the applicable requirements of ISO/IEC 17025.**

**Products are in compliance with the following contract:**  
 National Plumbing Code (NPC)

*David McHenry*      *Ron Chong*  
 Chairman, Product Certification Committee      CEO, The IAPMO Group



**IAPMO RESEARCH AND TESTING, INC.**  
500 East Philadelphia Street, Orange, California 92666 • (949) 472-4100 Fax (949) 472-4244 • www.iapmo.org

**CERTIFICATE OF LISTING**

The most updated information on this certificate of listing is available online at [iapmo.org](http://iapmo.org)

**Effective Date:** November 2013      **Valid Through:** November 2017

**Product:** Flushing Flush Valve Fixture      **File No.:** 4205

**Issued To:** Roca Inc.      **Manufacturer:** Roca Inc., 346, 4th St., Valencia, CA 91355, USA  
**Model:** R10000


**Identification:** Each fixture component shall have permanent legible markings to identify the manufacturer. The marking shall be in the same size, placement, or other mark as in the case of private labeling. The marking shall be located where it can be readily seen after installation in compliance with the applicable requirements of ISO/IEC 17025.

**Characteristics:** Flushing flush valve fixture components to be installed in accordance with the manufacturer's instructions and the requirements of the latest edition of the National Plumbing Code.

**Requirements listed on this certificate have been tested by an IAPMO RPT recognized laboratory. This certification has been granted based upon the laboratory's compliance to the applicable requirements of ISO/IEC 17025.**

**Products are in compliance with the following contract:**  
 National Plumbing Code (NPC)

*David McHenry*      *Ron Chong*  
 Chairman, Product Certification Committee      CEO, The IAPMO Group

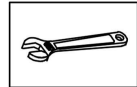


## BEFORE INSTALLATION

### ► Notes before installation

1. Please check that all components are present.
2. Before installation ensure that all feed lines are clear of debris and on/off valve is present.
3. Pictures in the manual are general in content and may not represent exactly your purchased faucet.  
If you are having difficulties please contact a professional plumber.
4. If you will be away from home for an extended period you should shut off the main water supply.

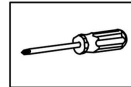
### ► Recommend Tools And Materials



Adjustable Wrench



Hexagon wrench

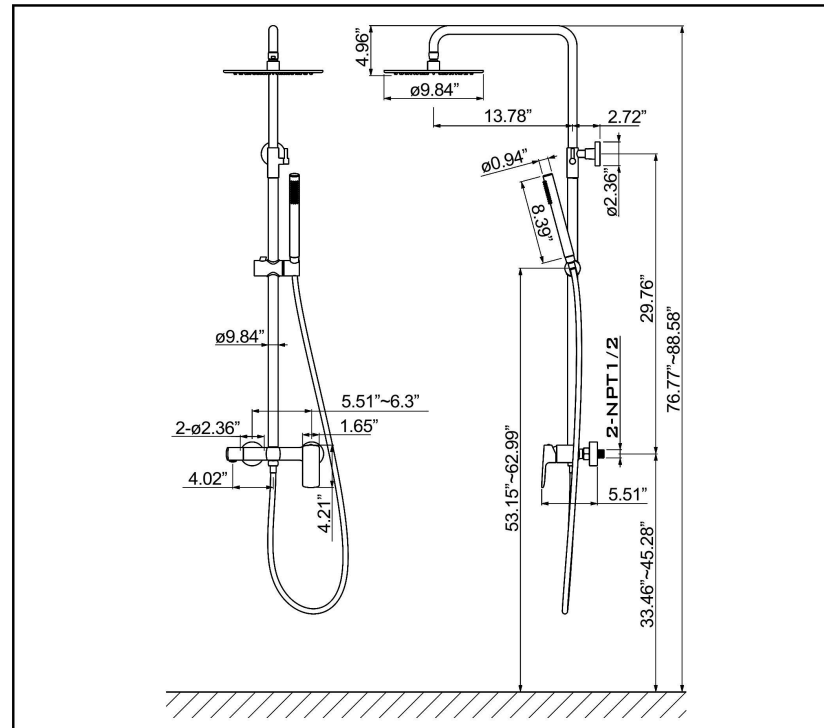


Philips Screwdriver



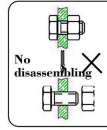
Pipe Tape

### ► Installation Dimension

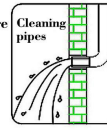


## INSTALLATION STEPS

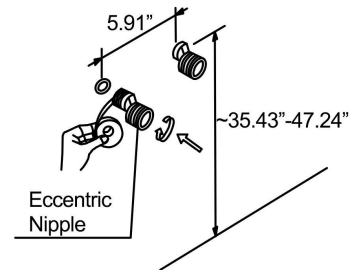
This product has been inspected and debugged by the factory to the best condition. Please do not disassemble and assemble it yourself.



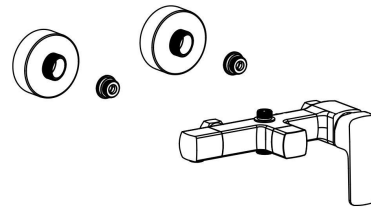
Before installing the faucet, please be sure to remove sundries and sludge from the water pipe to prevent sundries from blocking the faucet.



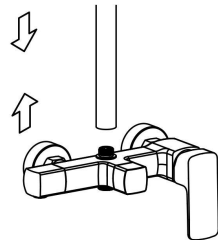
1. As shown, install the accessories and attach the tape.



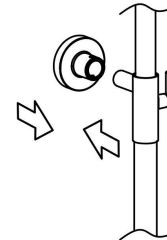
2. Install the main body and rubber pad.



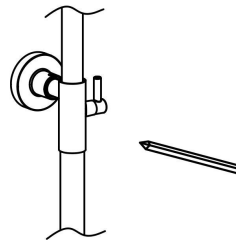
3. Install the riser on the faucet.



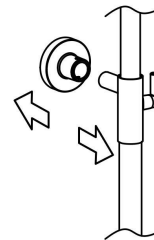
4. Install the mounting piece on the shower arm.



5. Make sure the riser is level, mark the position of the screw holes.

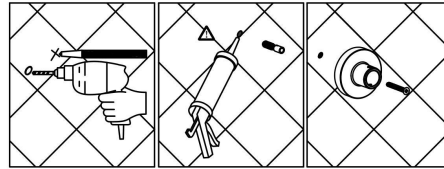


6. Remove the riser and the mounting piece.

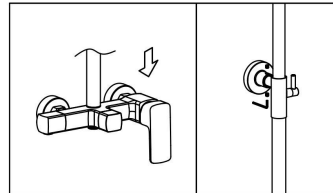


## INSTALLATION STEPS

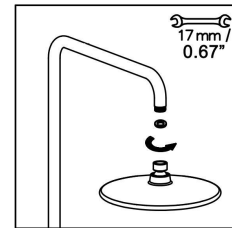
7. Drill the screw holes and install the anchors.  
Install the mounting piece and mounting piece seal.



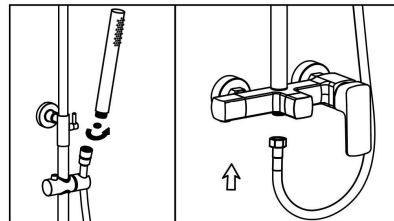
8. Install the riser on the faucet,  
tighten the screw.



9. Install the shower rain head.



10. Place the hose washer in the short hose end connection. Connect this end of the hose to the faucet. Place the screen washer in the long hose end connection. Install the hand shower on this end of the hose. Rest the hand shower in the holder.



## CLEANING CARE

In order to keep the appearance of faucet clean, bright and good performance, please take care of the faucet as follows;

1. Rinse with water only and dry with soft cotton cloth;
2. Use mild liquid and colorless glass cleaner to remove surface dirt and scale film, or use polish without abrasive effect;
3. Do not use abrasive detergent, polish, emery cloth, paper towel or scraper, etc.;
4. Do not use acid cleaner, or cleaner and soap with insoluble gran etc.;
5. In the process of use, mud may accumulate in the bubbler and make the water flow slow. The bubbler can be unscrewed, rinsed with water, and then installed back in place.



Please feel free to contact us if you have any questions. We will help to solve the issue together with you. OUR EMAIL: [services@rbrohant.com](mailto:services@rbrohant.com)



**AQUA**  
**GALLERY**