



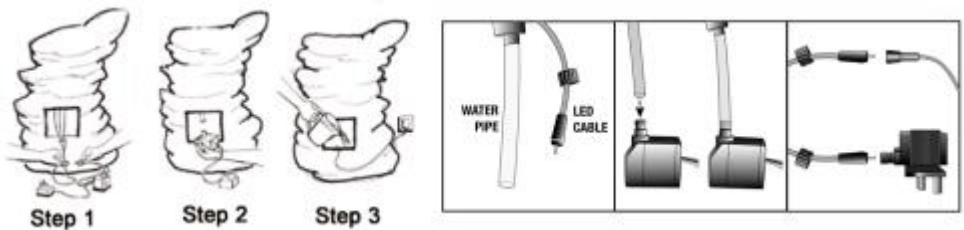
# **TRAPEZOIDAL FOUNTAIN**

# SAFETY INSTRUCTIONS

- The fountain should always be placed on a flat and clean surface.
- There must always be enough clean water in the well to prevent the pump running dry.
- Never let the pump run dry.
- Distilled water is recommended, but not necessary.
- Always unplug the power cord before maintenance.
- Operate the pump only with the voltage specified on the adapter.
- Never use the damaged power cord, and it should be disposed immediately.
- Check the hoses and kinks for blockages before settling to avoid the casing of the wells.
- Vibration and loud disturbing noises may come during operation.
- The pump must always be completely covered with water to an appropriate amount to ensure cooling.
- The water temperature should never be over 35°C.
- Never touch the drive unit in operation.
- Do not turn on the pump when the pump parts or the product is damaged.
- The head of the pump can be set on different models.
- For the models with glass ball, connect the LED to the hoses of the tube.
- Please follow all instructions, then you will have continued enjoyment of the product.

# OPERATION

- Unpack all parts carefully and check them for completeness. Make sure the fountain is placed on a smooth flat surface.
- Connect the pump to the hose and place the pump in the bottom of the fountain.
- If the fountain comes with LED, connect it to the pump and put the LED to its proper place.
- Fill the fountain with water and make sure the pump is totally submerged.
- Plug the power cord into the power outlet and enjoy the wonderful atmosphere.



\*Attention! The illustration can deviate optically, since the pumps are various.

\*Distinguish fountain in size and appearance slightly, the operation is not affected.

# SECURITY TIPS

- Obey absolutely valid regulations on the electrical security.
- Never run pump dry Pumping inflammable.
- As well as all other aggressive liquids is prohibited.
- Any altering of the product itself or changing of the components is forbidden, any warranty cannot be granted.
- For longer storage periods, the pump clean, rinse with clear water and dry at room temperature.