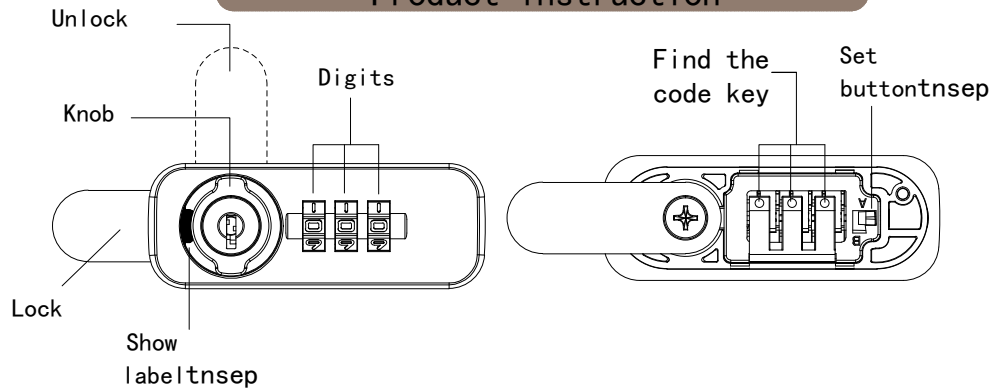


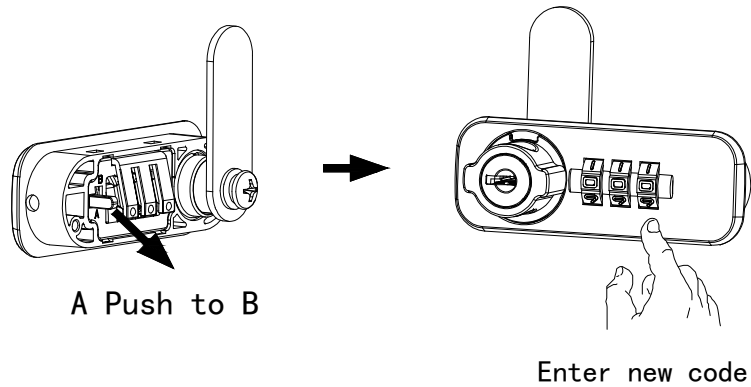
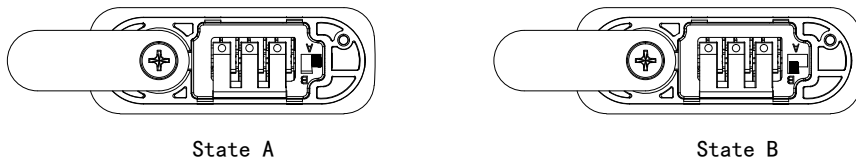
Operating Instruction 6061

Product instruction



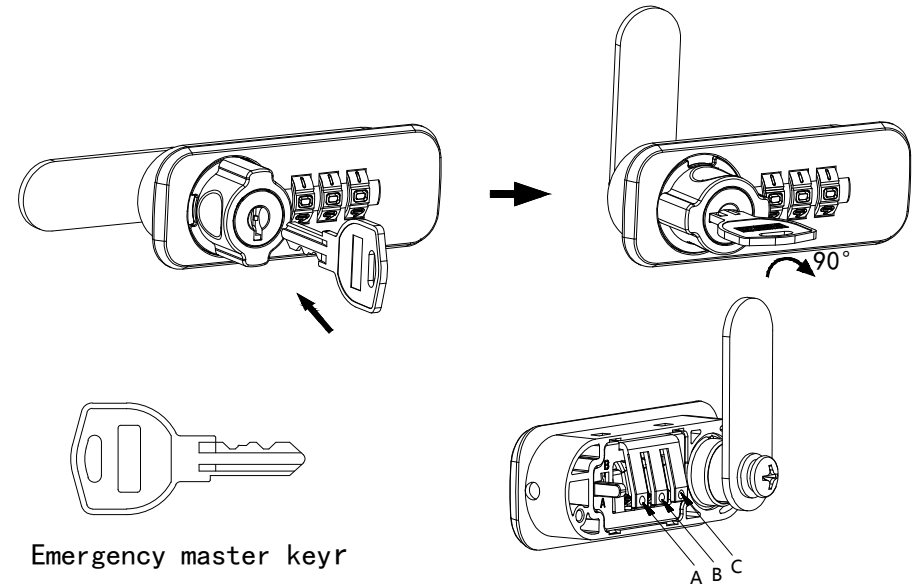
Set the code

1. Factory default code is "000".
2. When turned on, push the set button on the back of lock from "A" to "B", then enter new code.

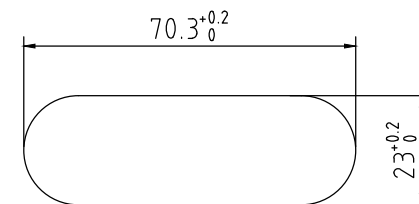


How to find lost code

1. Insert the Emergency master key to open the lock.
2. Keep press button for find code on the back of lock, then rotate the front digits until it cannot move anymore.



Installation dimensions



Install the opening hole