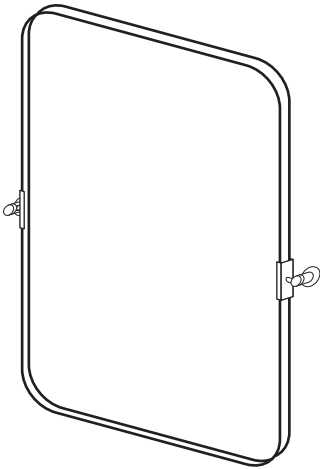


MOUNTING INSTRUCTIONS

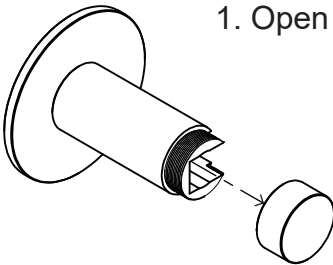


Contents:

①	②	③	④	⑤	⑥	⑦
MIRROR	BRACKET	SCREW	ANCHOR	SCREW	SCREW BITS	Hexagon Key Wrench
×1	×2	×2	×2	×4 (2 spare parts)	×1	×1

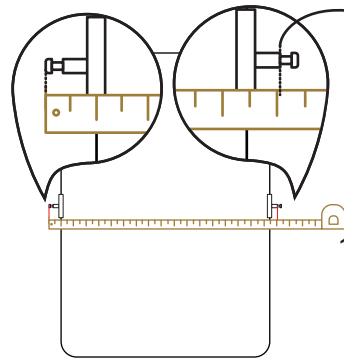
1

1. Open The Cover.



2

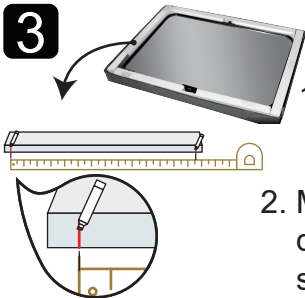
Pay attention to the key position.



1. Measure from one side end to the other convave part side(as photo)

3

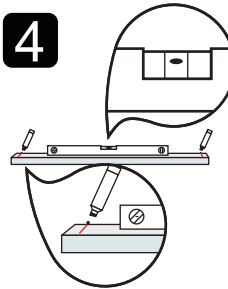
1. Take out a section of Styrofoam from the box.



2. Mark the corresponding distance (from the 2nd step) on Styrofoam.

4

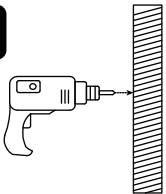
1. Put the styrofoam on the wall, use a spirit level tool to ensure the level.



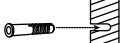
2. Mark the point on the wall according to the marked styrofoam (point mark from 3rd step)

5

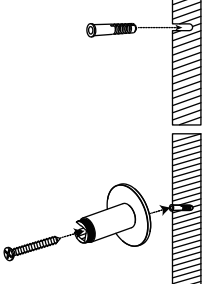
1. Drill holes at points.



2. Put the anchor into the wall

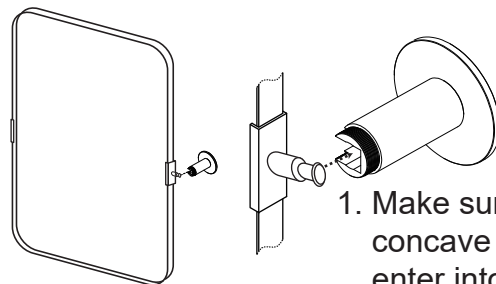


3. Pass the screw through the hole in the base and install it into the anchor.



6

1. Make sure the brackets' concave part totally enter into the hole of the bracket.



2.Tighten the cover.

3.Tighten the small screw at the bottom.

