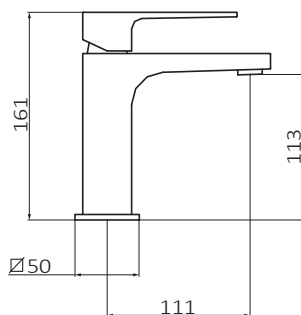


TECHNICAL SPECIFICATIONS

Review date: 30/01/19



SERIE: **KALA**

PRODUCT: **Wash basin mixer**

CHARACTERISTICS: **without clic-clac waste**

FINISH: **black**

CODE: **60 510 601**

TECHNICAL SPECIFICATIONS:

- › Recommended pressure: **1 to 5 bar**
- › Maximum pressure of use: **10 bar**
- › Connexion dimensions according to **UNE EN-817**
- › Flow **3 bar min 12 l/min**

MATERIAL SPECIFICATIONS:

- › **Brass made**
- › **Metallic** handle
- › Niquel-chrome finish tested in salt spray according to **UNE-19703 and UNE-19709**
- › Acustics according to **UNE-EN 817**

EPOXY PAINTING RECOVER RESISTANT TO:

- › Salt spray test according to **UNE 19703** and **UNE-EN 248**
- › Cyclic test (outside ambiances) according to **UNE-EN ISO 16701**
- › Hardness and density accoring to **UNE-EN 2815**

USE SPECIFICATIONS:

- › Epoxy plating with high resistance and adherence
- › Integrated aerator with easy access
- › Flexible connection hoses