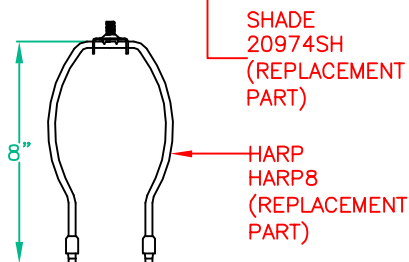
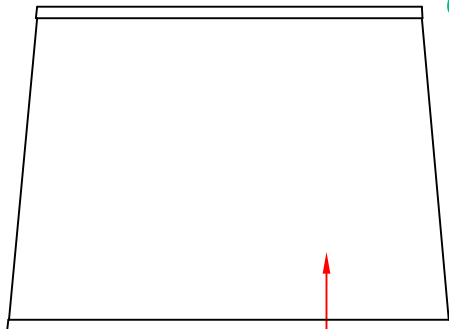


2 CM (3/4") DIA.  
2.9 CM (1-1/8") HEIGHT

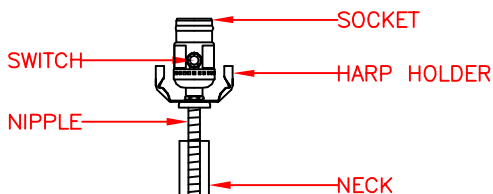
FINIAL

RUBBER  
WASHER  
(CLEAR)



SHADE  
20974SH  
(REPLACEMENT  
PART)

HARP  
HARP8  
(REPLACEMENT  
PART)



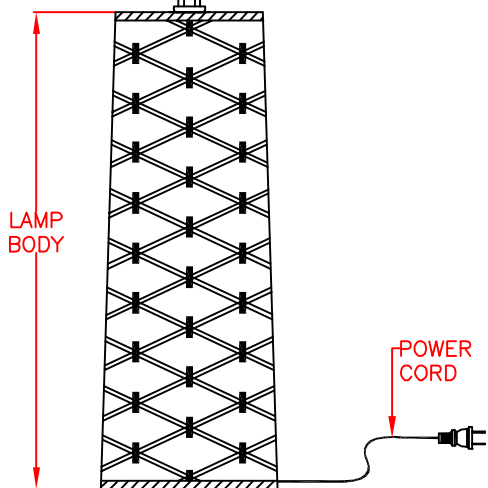
SOCKET

SWITCH

HARP HOLDER

NIPPLE

NECK



LAMP  
BODY

POWER  
CORD

AVAILABLE PARTS ARE:  
(SHADE)  
(HARP)

## PRODUCT SPECIFICATIONS

- OVERALL ASSEMBLED DIMENSIONS**  
HEIGHT: 74.9 CM (29-1/2"), WIDTH: 38.1 CM (15") DIA.
- 1 LIGHT:** UL LISTED, 150 WATT, MEDIUM BASE E-26 ALUMINIUM SOCKET, 3-WAY ROTARY SWITCH. THE HARP, SADDLE, SPIDER AND SOCKET ARE PB FINISH.
- SHADE:** TAUPE LINEN TAPERED DRUM SHADE, 27.9 CM (11") DIA. (TOP) x 38.1 CM (15") DIA. (BOTTOM) x 28 CM (11") SLANT HEIGHT. THE SPIDER DIAMETER IS NOT LESS THAN  $\phi 4$  MM. THE SHADE FABRIC CONTENT: 20% FIBRE AND 80% LINEN.
- NECK:** PAINTED STEEL, 2.5 CM (1") DIA. x 6.4 CM (2-1/2") HEIGHT.
- LAMP BODY:** LIGHT AND DARK ROPE, 12.7 CM (5") DIA. (TOP) x 15.2 CM (6") DIA. (BOTTOM) x 42 CM (16-1/2") HEIGHT.
- CORD:** UL LISTED, MIN 183 CM (6 FT.) LENGTH, 18 AWG., 2 CONDUCTORS, 105°C, TYPE SPT-2, SILVER/CLEAR COLOR. WIRES MUST BE LEAD FREE.
- LABELS:** UL AND CSA OR CUL, MANUFACTURING DATE, MODEL # AND COUNTRY OF ORIGIN LABEL PROVIDED. RELAMPING LABEL FOR 150 WATT MAX. TYPE "A" 3-WAY BULB PROVIDED ON SOCKET.

## PACKAGING AND SHIPPING DETAILS

## OTHER DETAILS

- ALL VISIBLE PARTS, EXCEPT SHADE, MUST MATCH LAMP FINISH UNLESS OTHERWISE SPECIFIED.
- ALL BAGS MUST BE LABELED WITH OFFICIAL "THIS BAG IS NOT A TOY" STATEMENT.
- LAMP MUST REST FLAT ON SURFACE AND NOT ROCK. LAMP MUST PASS AN 8' TILT TEST.
- ASSEMBLY TIME: 10 MINUTES.
- DIMS OF BOX: 55.9 CM (22") LENGTH x 48.3 CM (19") WIDTH x 31.8 CM (12-1/2") HEIGHT.
- NET WEIGHT: 4 LBS. GROSS WEIGHT: 7.5 LBS.