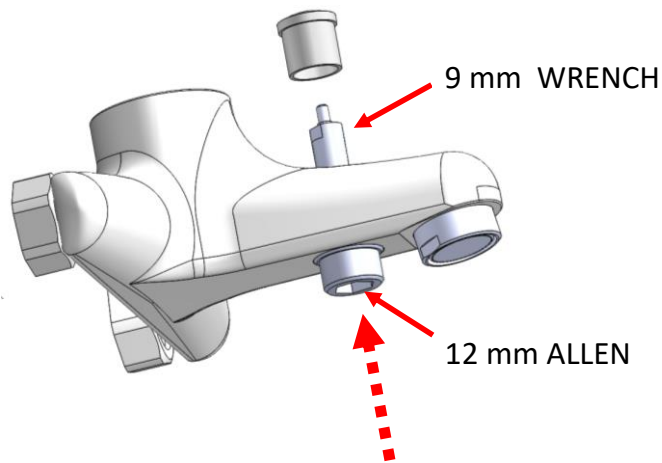
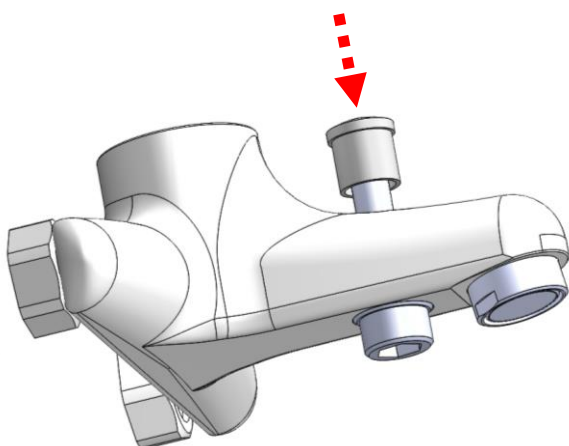


1) CLEAN VERY WELL WITH WATER THE INNER PART OF THE BODY WHERE YOU FIT THE DIVERTER

2) PUT SOME LIQUID SOAP ON THE DIVERTER ORINGS TO AVOID DAMAGING



3) SCREW CLOCKWISE THE DIVERTER COMPLETELY IN THE BODY USING A 12 mm ALLEN KEY ON THE BOTTOM , OR A 9 mm WRENCH ON THE UPPER SIDE . DON'T DAMAGE THE ORINGS DURING THE SCREWING .



4) SCREW CLOCKWISE THE CAP ON THE DIVERTER ROD.