

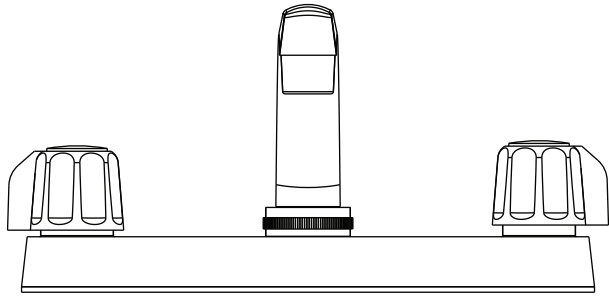
Item KFA01
Item KFA02 (With Spray)



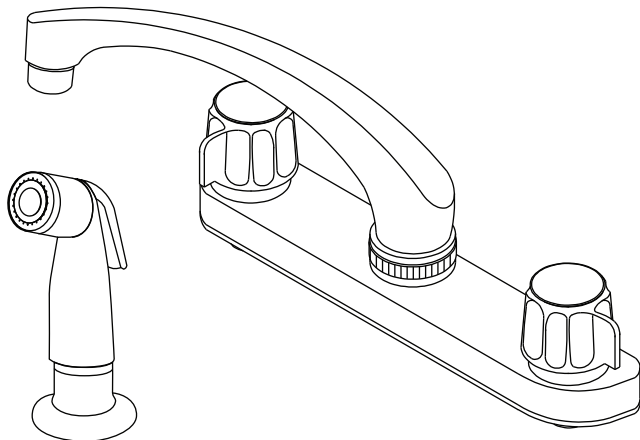
Fits right, always tight, safe & durable.

Care Instructions

To clean, wipe gently with a soft, damp cloth, then wipe dry. Plumbtech® faucet finishes are very durable. However, to ensure long lasting luster, harsh abrasives or polishes should be avoided. Your specific model may vary.



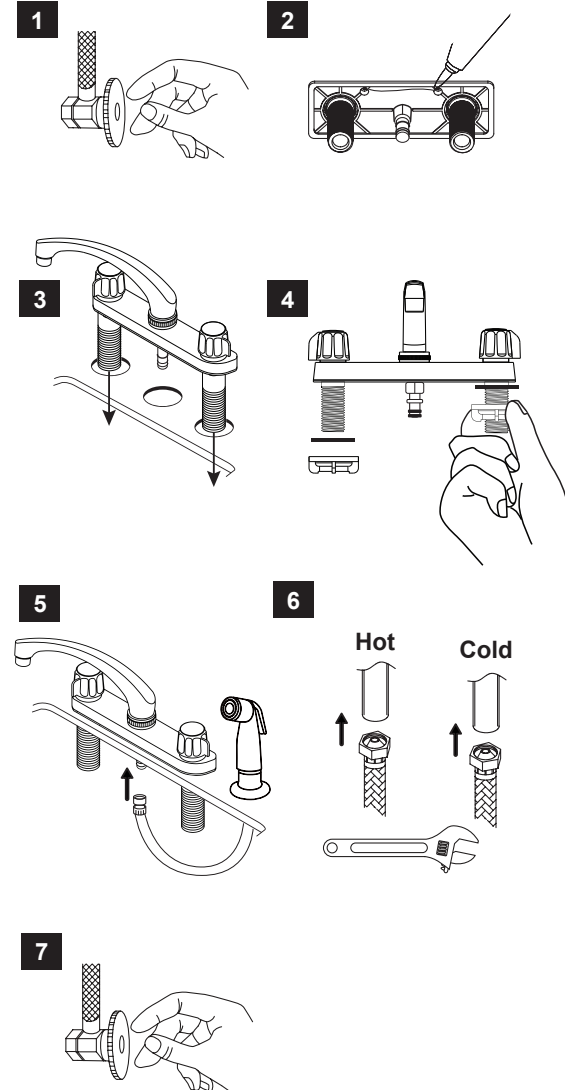
The product illustrated may vary slightly from the actual product.



SINGLE & DOUBLE HANDLE KITCHEN FAUCET INSTALLATION INSTRUCTIONS

TO INSTALL SINGLE & DOUBLE HANDLE FAUCETS

- 1 Turn off the water supply at the valves under the sink or at the main supply line. Remove the existing faucet and clean any residue from the sink surface.
- 2 Apply clear silicone latex caulk to the base plate of the new faucet (caulk not included).
- 3 Position the new faucet by inserting the tailpieces into the corresponding holes on the sink.
- 4 Underneath the sink, attach the supplied basin nut onto each tailpiece and hand-tighten to secure the faucet.
- 5 (Model with Spray) Plug the quick connector cover into the faucet body adapter. Push all the way to the top. Pull down the hose to lock quick connector. Check connection for the quick connector by pulling down the hose slightly.
- 6 Connect the hot and cold water supply lines to the respective tailpieces. Use a wrench to tighten the connections. Be careful not to overtighten to avoid damaging the fittings. Ensure all connections are securely tightened. Turn on the water supply at the valves. Test the faucet operation by turning it on and checking for leaks around the connections. Unscrew and remove the aerator from the faucet spout. Run both hot and cold water for at least 30 seconds to flush out the water lines.
- 7 Turn off the faucet and reinstall the aerator onto the spout. Double-check all connections to ensure they are secure and leak-free.



On single lever faucets, use a wrench to hold the copper faucet lines in place when tightening supply lines. This will help prevent twisting and kinking or damaging the faucet.