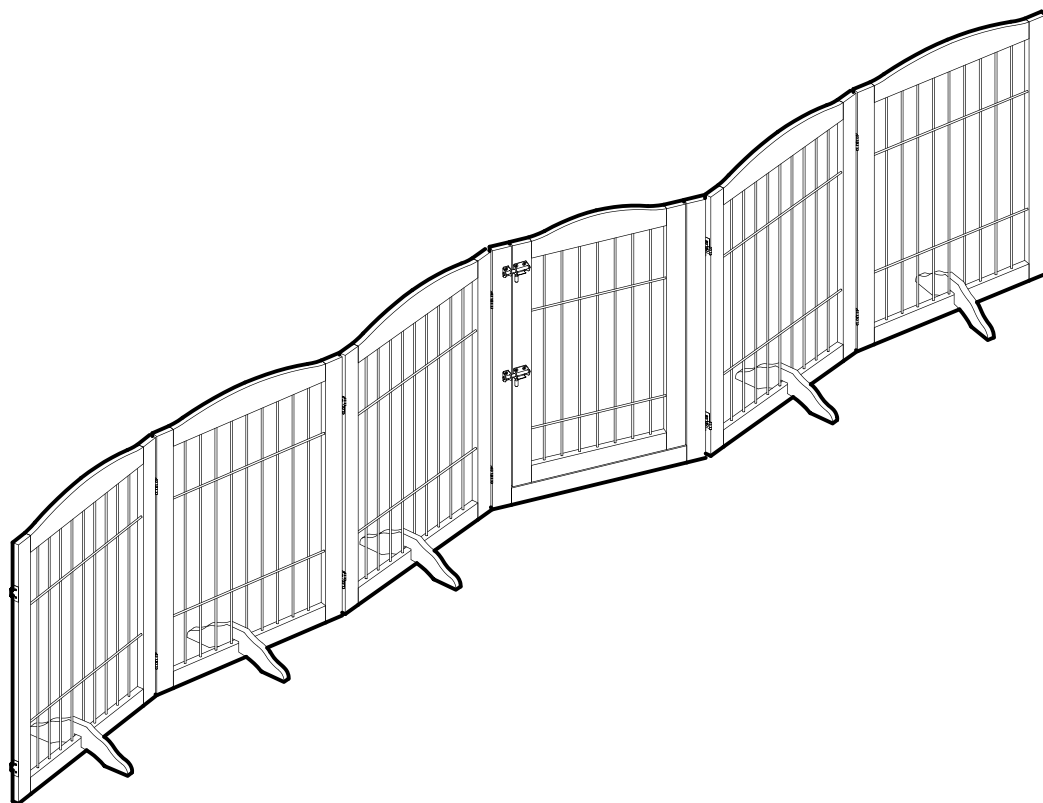


# Universe Home Inc

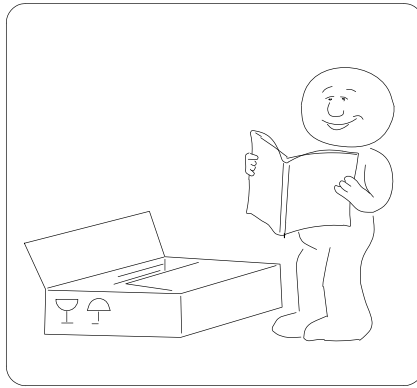
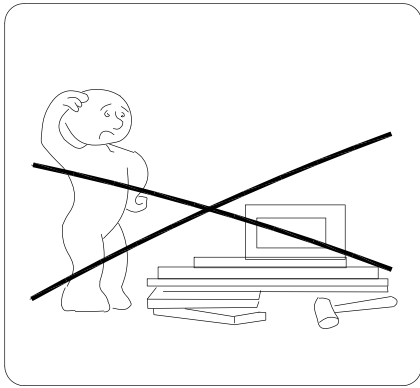
If you had any problems with the product,  
CONTACT US: [info@universeh.com](mailto:info@universeh.com)



---

## ASSEMBLY AND CARE INSTRUCTION

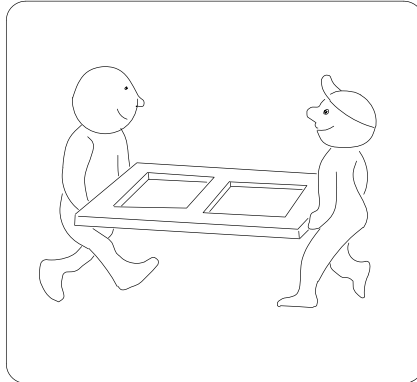
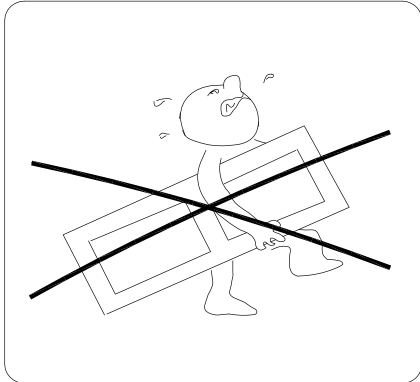
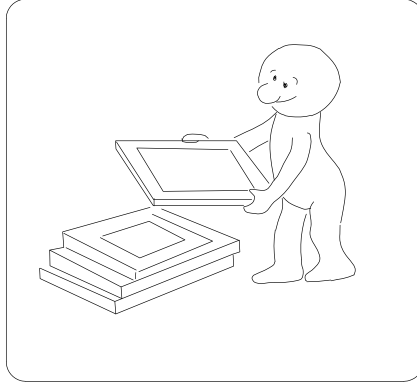
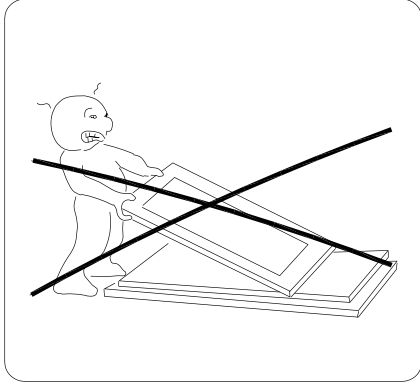
### Six Panel Pet Gates



## **WARNING**

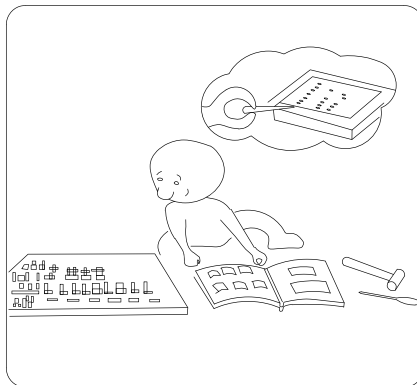
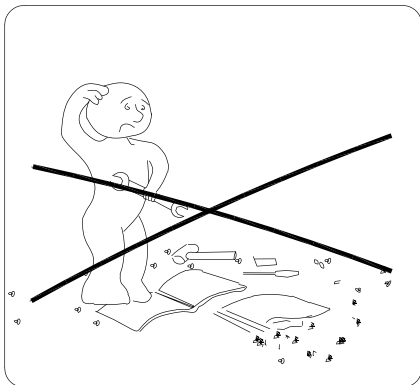


1. PLEASE READ ALL INSTRUCTIONS CAREFULLY BEFORE STARTING ASSEMBLY.
2. DO NOT LET ANY SHARP OBJECTS TOUCH OR RUB THE SURFACE OF THE PRODUCT.
3. WHEN ASSEMBLING, DO NOT LET CHILDREN PLAY AROUND THE WORKING AREA.
4. PLEASE CONFIRM ALL PARTS ARE CORRECT BEFORE STARTING THE ASSEMBLY PROCESS.
5. DO NOT TIGHTEN ALL BOLTS AND SCREWS COMPLETELY UNTIL THE ENTIRE UNIT HAS BEEN ASSEMBLED AND SET UP.

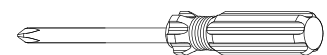


## **ADVISE**

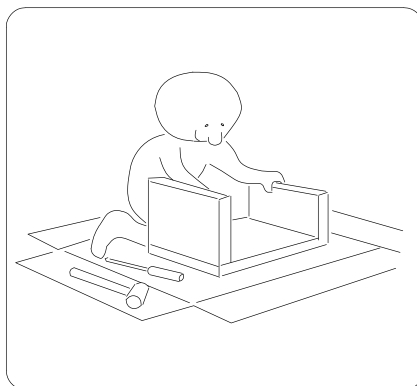
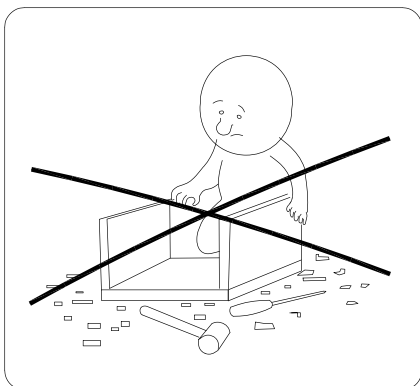
1. DO NOT SIT OR STAND ON THIS PRODUCT. IT IS INTENDED FOR PETS ONLY.
2. THIS PRODUCT SHOULD BE ASSEMBLED BY AN ADULT.
3. PLEASE PUT THE PRODUCT ON A SMOOTH SURFACE AFTER YOU ASSEMBLED IT.
4. PLACE ALL PARTS ON A CLEAN AND SMOOTH SURFACE SUCH AS A RUG OR CARPET TO AVOID THE PARTS FROM BEING SCRATCHED.
5. THE SCREW OF HINGE ON THE DOOR ALSO CAN BE ADJUSTABLE, TO MAKE IT EVEN THEN TIGHTEN ALL SCREWS.



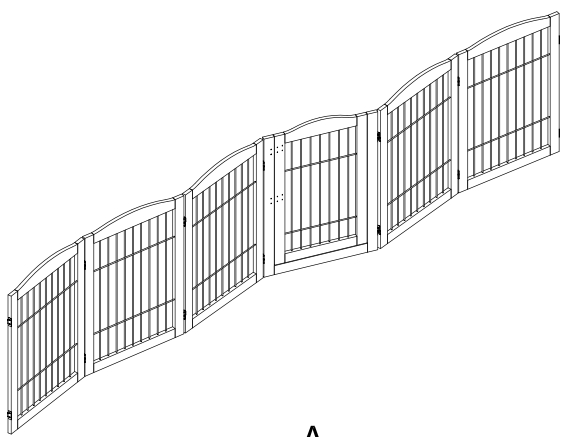
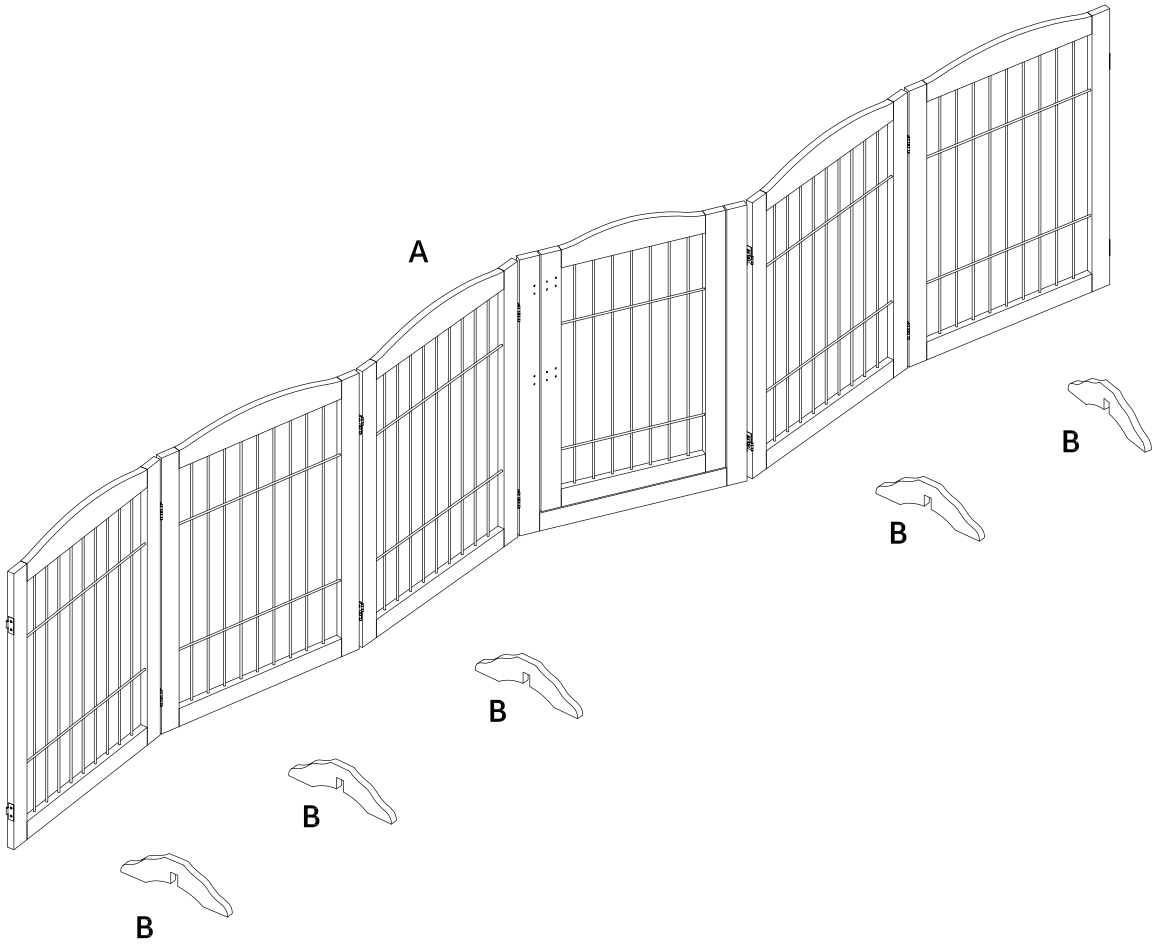
## **TOOL NEEDED**



**SCREWDRIVER REQUIRED**  
- NOT INCLUDED



**PARTS**



**A**  
Pet Gates  
x1



**B**  
Support Feet  
x5

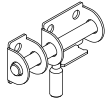
# HARDWARE



1  
x 2 pcs



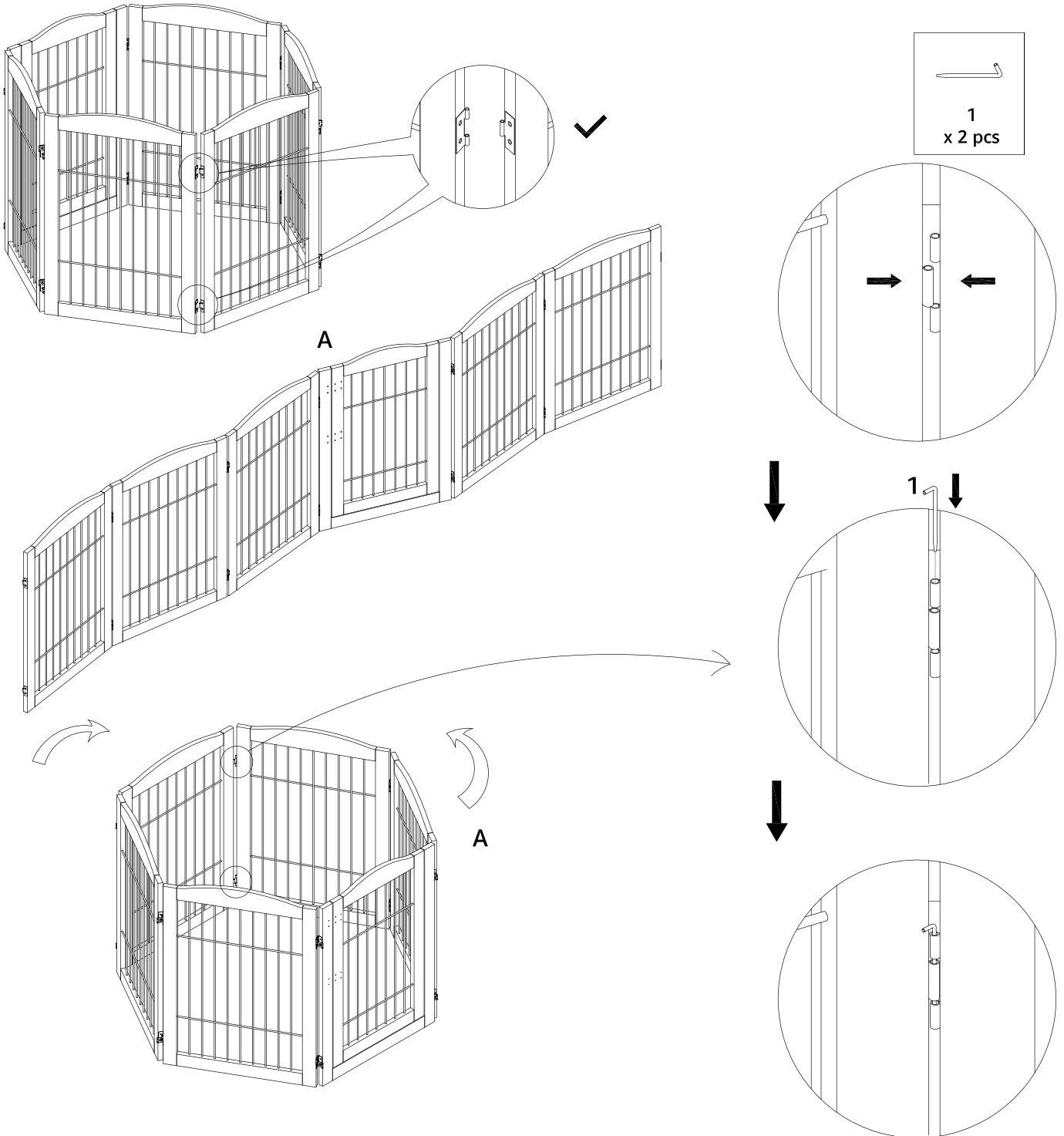
2  
x 12 pcs



3  
x 2 sets



# ASSEMBLY INSTRUCTIONS

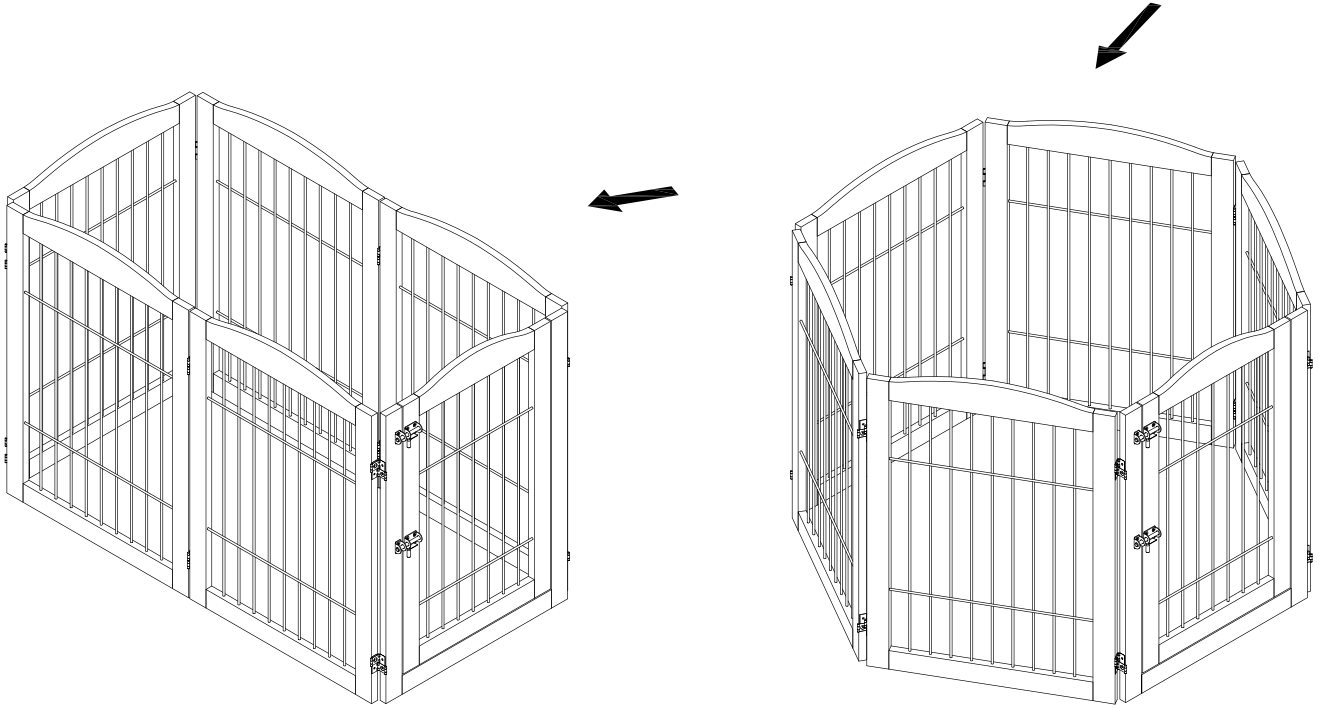
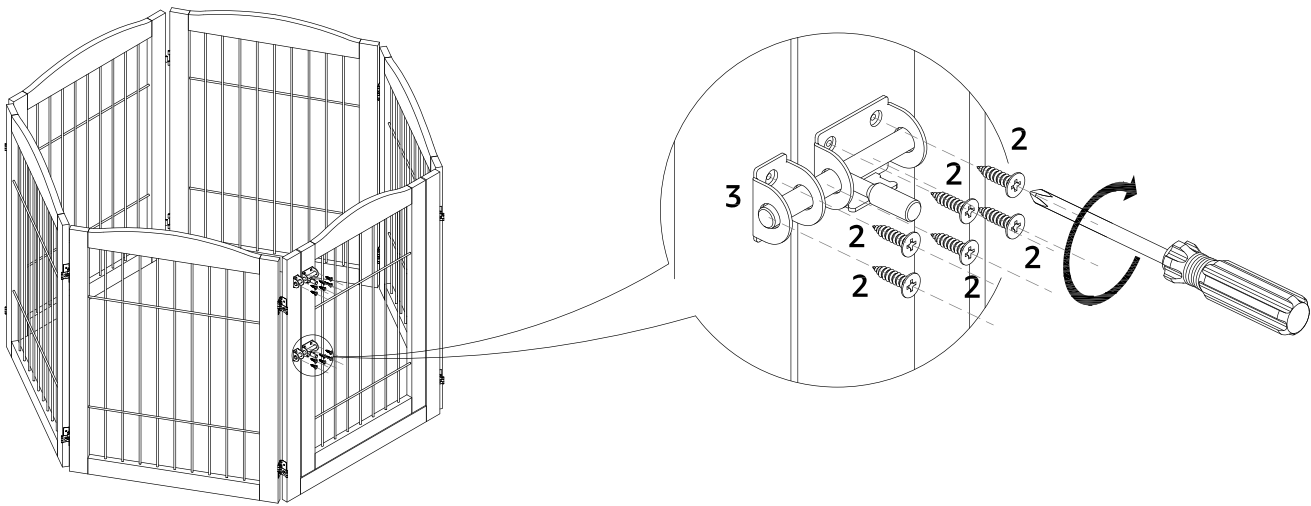
1 Connect the gates and insert the pin #1 into the hinge to be the play pen.



2

Install the latch #3 with screw #2 on the door of the gate.

	
2 x 12 pcs	3 x 2 sets



3

Insert the support feet B into the gates shown as below.

