

User Manual

Floor Lamp With Shelves

1. Introduction

Thank you for purchasing our shelf floor lamp. Please read the following instructions carefully before assembly.

2. Product Features

- 1.DIY assembly, modern minimalist style, classic color scheme. The versatile design brings not only a beautiful luminaire, but also convenient storage options.
- 2.The multi-tiered shelves allow you to display vases, books, plants etc for decoration.
- 3.Different light bulbs with E26 base can be applied to meet different ambience needs.
- 4.The poles of this lamp are made of iron, which makes the lamp much more sturdy and durable.

3. Parameter

Lamp	
Power	MAX 60W
Material	Iron + MDF + Flax
Socket Type	E26
Switch	Pull Switch
Recommended Bulb	A19/ST64/ST58
Size For Lamp	10.23x10.23x62.2 inches
Life	30000h

6. Usage

On/off: Pull the chain switch.

CCT: You can change the CCT every two pulls.

7.Warranty and Our mission

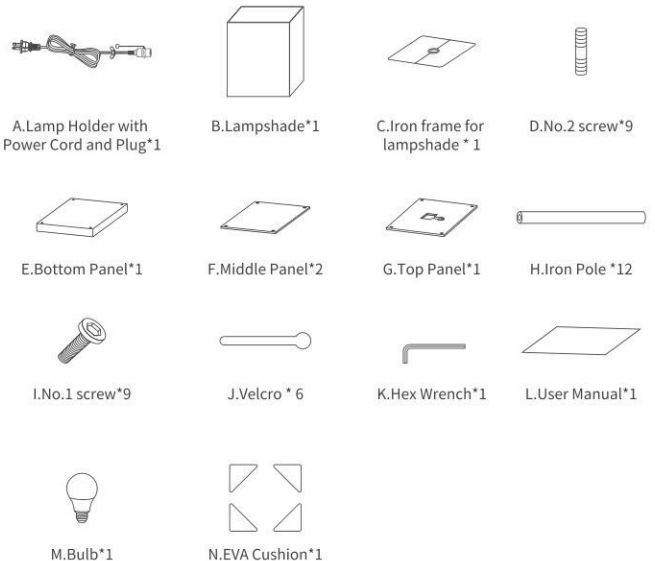
Light the world, Warm your heart, which is the goal that we have been pursuing. We'd like to provide the best lamps and service to you. We provide a 36-month warranty for you. If you have any questions or suggestions, please contact us, we would do our best to solve the problem and improve ourselves. Wish you enjoy the lamp and our service.

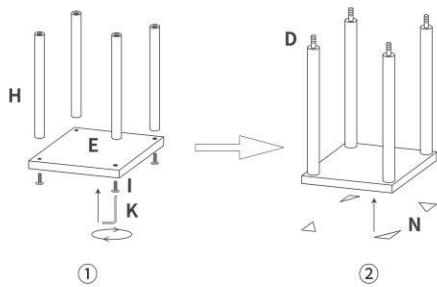


4. Cautions

- 1.Please keep it in a dry environment and don't touch the lamp with wet hands.
- 2.For a longer service life, please do not use the lamp in hot or corrosive surroundings.
- 3.Please make sure that the voltage is 100-120V, which is standard for US. This product can only be used between 100-120V.
- 4.Unplug before cleaning.

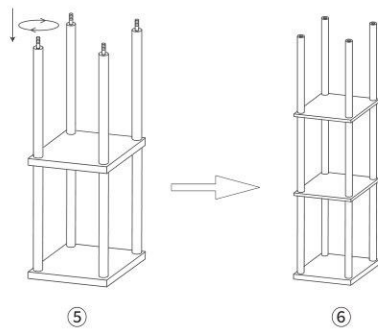
5. Package List





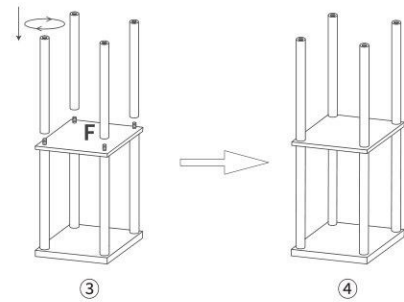
Step 1: Use the hex wrench to fix the bottom panel and the iron poles(4PCS) firmly with No.1 screw(4 PCS).

Step 2: Stick the EVA cushion to the bottom of the bottom panel.Rotate No.2 screw(4PCS) and fix them to the top of the iron poles.



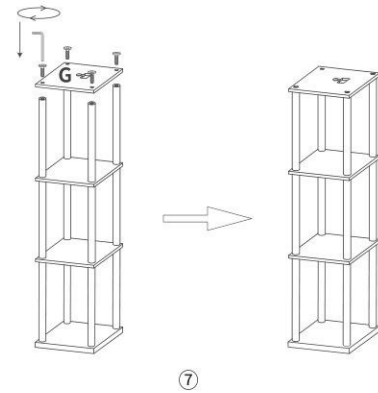
Step 5: Rotate No.2 screw(4PCS) and fix them to the top of the iron poles.

Step 6: Pass the other middle panel through No. 2 screws and place it on the iron poles.

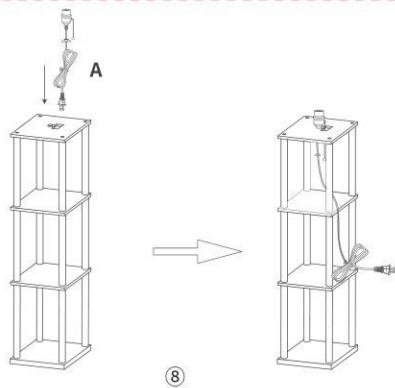


Step 3: Put the middle panel on the iron poles through No.2 screw.

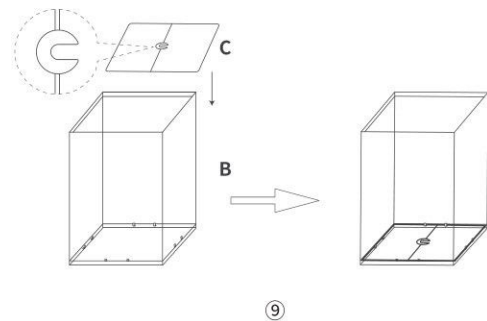
Step 4: Tighten the iron poles and fix them on the middle panel.



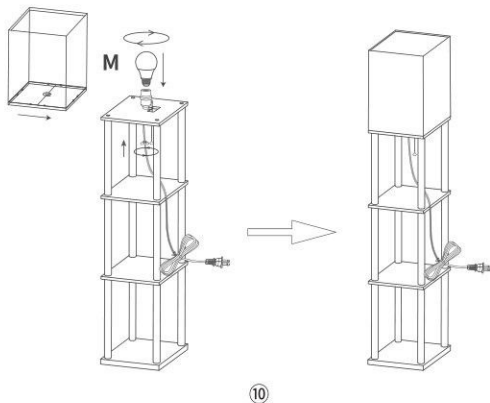
Step 7: Similar to step 6 screw on the iron poles, and then fix the top panel on the poles firmly with the No.1 screw(4PCS) via hex wrench.



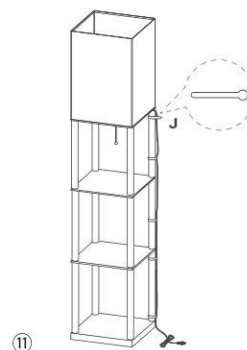
Step 8: Pass the plug, butterfly nut, and washer through the top panel, and drop the pull chain through the square hole.



Step 9: Put the bracket into the lampshade from top to bottom and fix the bracket with the buckle.Where the crossbar intersects with the C-shaped iron sheet, the protruding part of the crossbar faces downwards.



Step 10: Lift the lamp cap slightly, let the wire pass through the C-shaped notch of the lower bracket. Press the lamp socket firmly against the bracket and then tighten the wing nut under the lamp cap to fix the lamp cap and lampshade. Please note that the notch is facing the pull chain so as not to get caught in the pull chain.



Step 11: Fix the wire with Velcro.