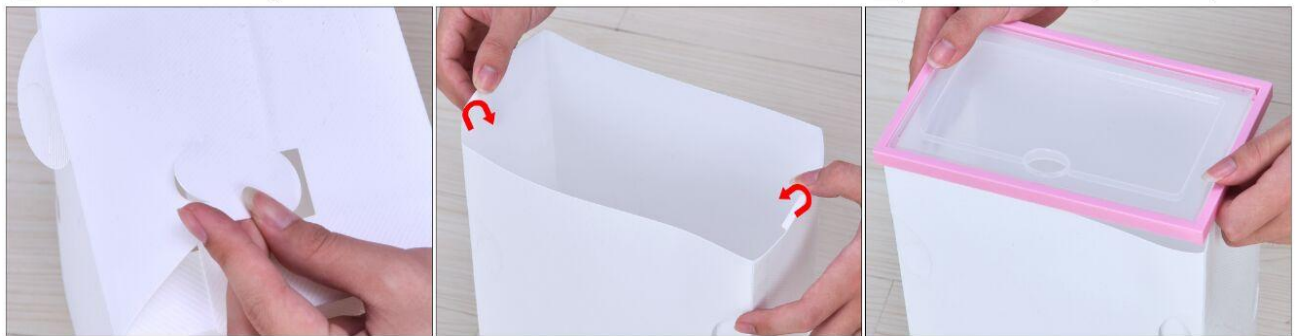


# Shoe box assembly instructions



**1.** Fold the case along the fold line **2.** Fold the sides of the case to 90° **3.** Fold the bottom (with holes) to 90°



**4.** Snap the bottom tab into the square hole **5.** Fold the tabs on either side **6.** After aligning the door, snap it into the case

# Multiple shoe boxes assembly instructions



**1.** Align the upper shoe box card slot **2.** Insert tab into slot in the upper box **3.** Pulling the middle tab outward



**4.** Align the same level shoe box **5.** Done **6.** Storage the shons