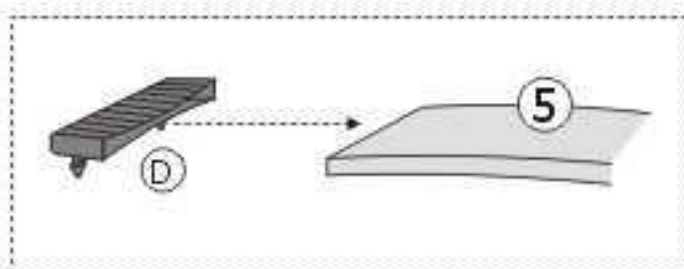
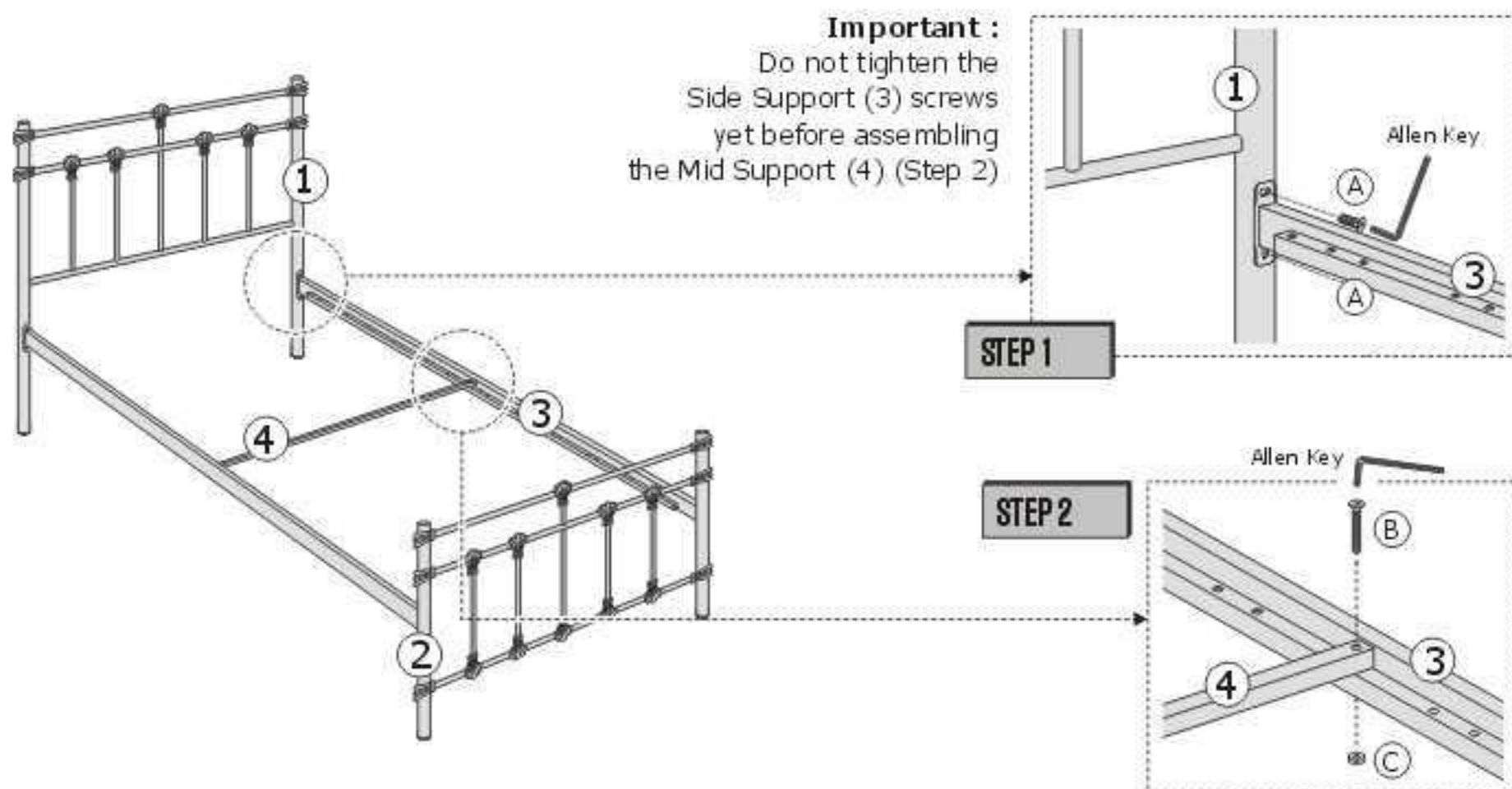


How do I assemble 3'?

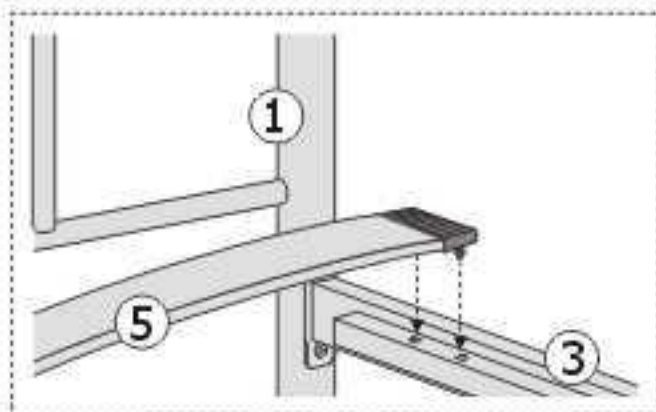
- Step 1. Fix the Side Support (3) to the Headboard (1) and Footboard (2) with M6 x 16mm JCBC Screw (A). But do not tighten the screw yet before assembling the Mid Support (4) in Step 2.
- Step 2. Place the Mid Support (4) on top of both Side Support (3) and tightly secure with M6 x 45mm (B) and M6 Nut (C).
- Step 3. Slot the Bendwood Connector with 1 end open (D) with Bendwood (5) on both end and repeat for the rest.
- Step 4. Lastly, press the end of the Bendwood (5) which has been fixed with Bendwood Connector with 1 end open (D) in the holes of the Side Support (3) accordingly.
- Step 5. Insert BG6215D - 38mm Metal Cap (E) into the tube of the Head/Footboard (1&2) as being shown.

Important :
Do not tighten the Side Support (3) screws yet before assembling the Mid Support (4) (Step 2)



STEP 3

STEP 4



STEP 5

