

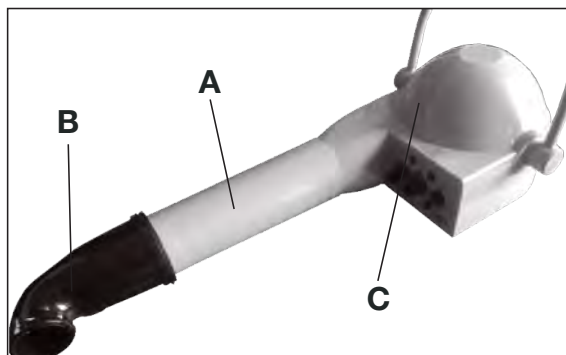
# TP24011 • Master Equipment Replacement Heating Element for TP2401 Replacement Instructions

## Parts List

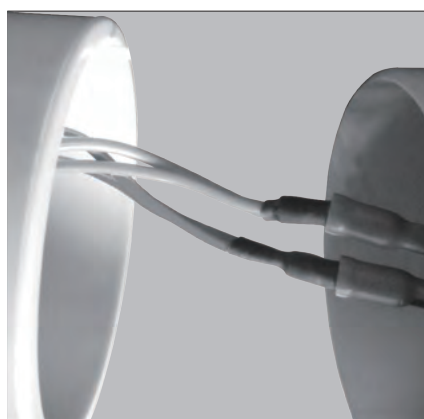
- (A) Air duct (1)
- (B) Nozzle attachment (1)
- (C) Dryer main body (1)

## Tools Required (Not Included):

Phillips Screwdriver



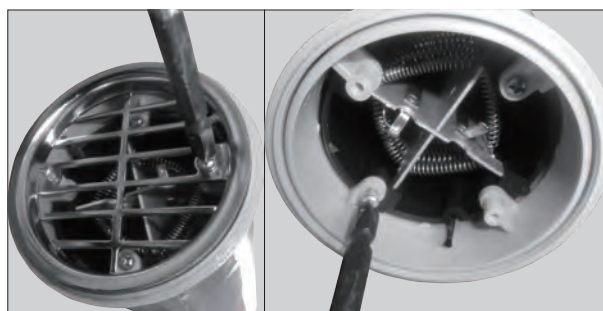
- 1). Remove the screw on the air duct (A), and separate the air duct (A) from the main body of the dryer (C).



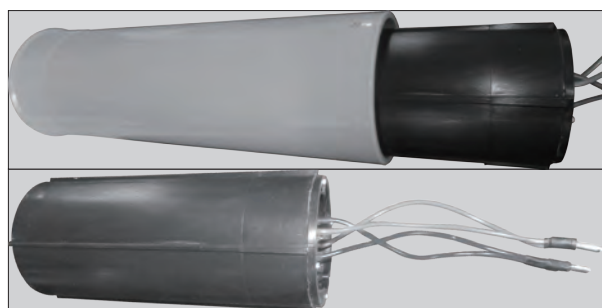
- 2). Unplug the wire of the heating element.



- 3). Take off the nozzle attachment (B).



- 4). Unscrew the vent cover from the front of the air duct (A).



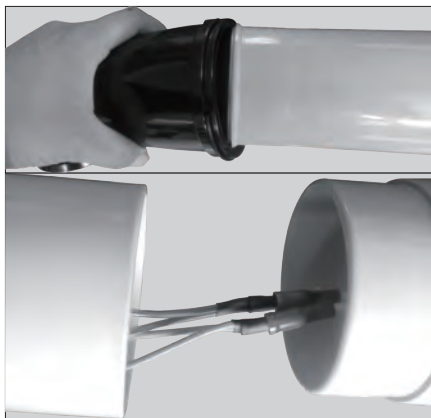
- 5). Remove the broken heating element from the air duct (A), and put the new one into the duct.



- 6). Replace the screws of the metal cover to secure the heating element.



## TP24011 • Master Equipment Replacement Heating Element for TP2401 Replacement Instructions (continued)



- 7). Connect the nozzle attachment (B) to the front of the air duct (A) and connect the wire of the heating element to the main body of the dryer (C).



- 8). Connect the air duct (A) to the dryer, and tighten the screw to secure it.