

Installation Instructions

DESK



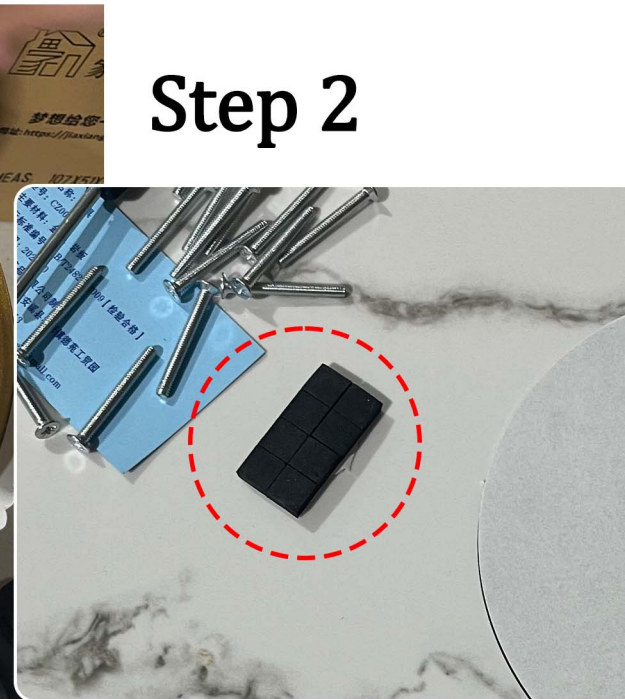
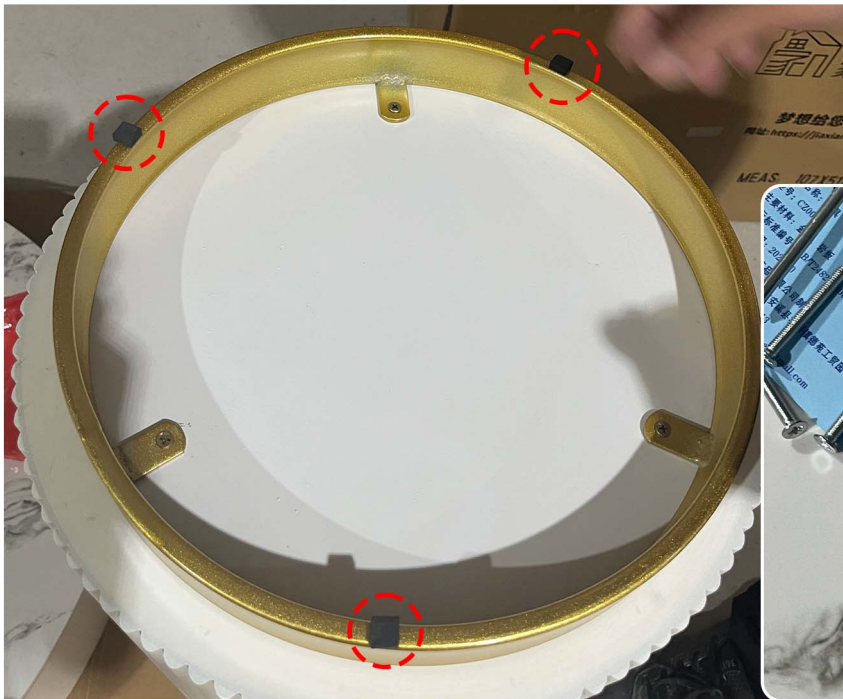
All fittings before installation





Stick the circular pad to the bottom of the cylindrical table legs

Step 1



Step 2

Stick anti-slip pads on the metal frame

Step 3

Place the metal frame directly on the cabinet surface



Step 4

Turn the desktop over and place it directly on the storage cabinet and the table legs





Step 5

Align the drawer handle with the hole position, then install the screws and tighten them

