

20 : 00

estimated assembly



2 or more

people required

Ok, let's
get started!



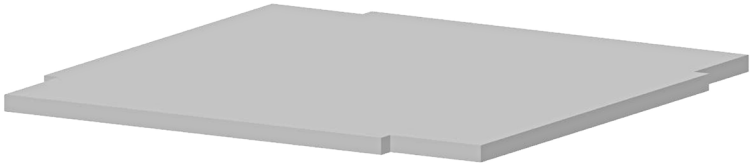
- Put on mood music!
- To prevent damage to product, use the clean side of package carton or rug as working surface.
- In the event of missing or damaged parts, delivery problems etc., please reach out to our team. We will be happy to fix the problem!

care guide

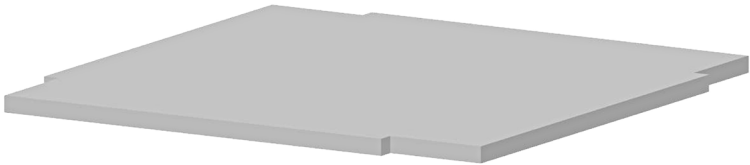
- Clean regularly with a soft and dry cloth.
- To protect finish, avoid use of abrasive cleaners.
- Wipe up spills immediately. Please!



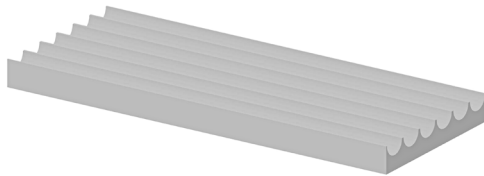
product parts



(A)
Table Top
x1

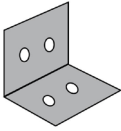


(B)
Shelf
x1

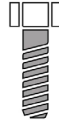


(C)
Table legs
x4

what's included



(D)- Metal Clip
x8



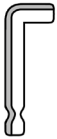
(E)- Allen Bolt
(6 x 20mm)
x32



(F)- Plain Washer
x32



(G)- Lock Washer
x32



(H)- Allen Key
x1

assembly instructions

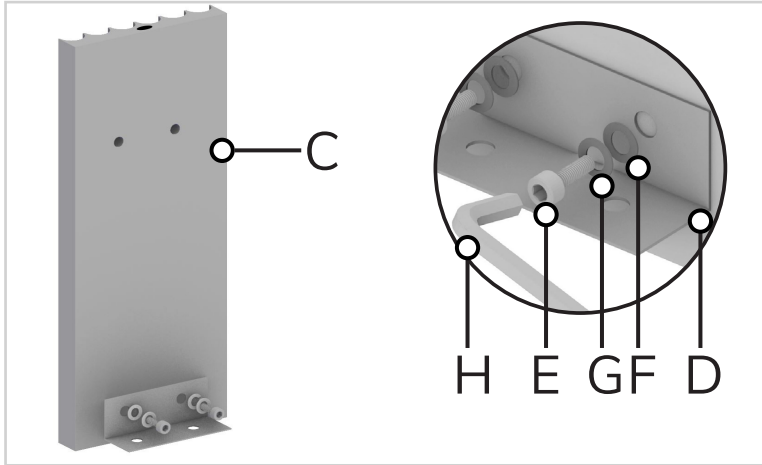
Friendly Tip: Take a deep breath going in. This may be a tricky part, but nothing too overwhelming. Just follow these steps to the T and the outcome will be worth it!



- ⓘ While assembling the product, tighten the bolts up to 50%. Once all parts are in place, only then fully tighten the bolts.

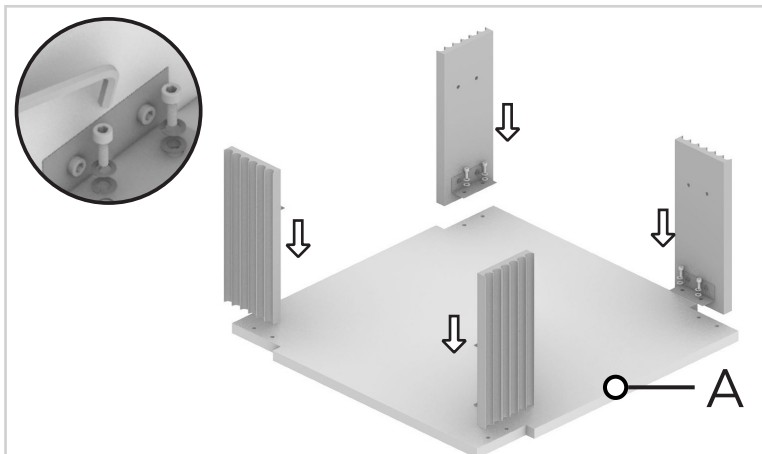
step 1:

Start by placing the legs (C) upside-down (vertically) on the floor as shown in the image below. Then align the metal clips (D) to the slots given on the legs. Fix it in place by using washer (F), lock washer (G) & bolts (E). Tighten them using allen key (H).



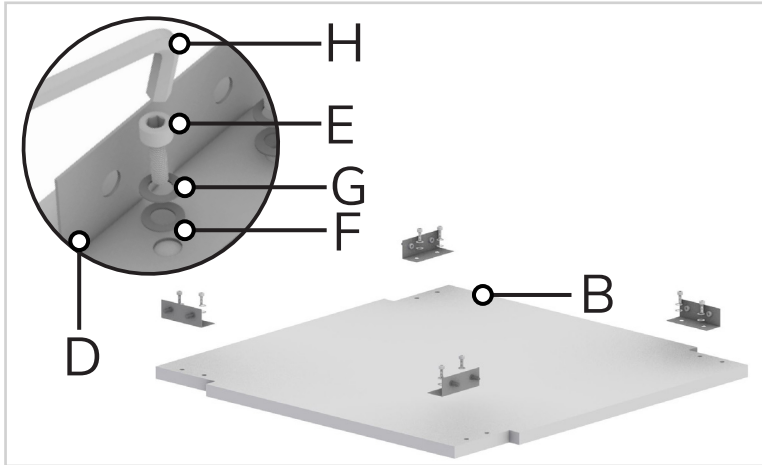
step 2:

Repeat the same process with the remaining legs. Now, place the tabletop (A) upside-down on a flat surface & align all the legs with the slots on the top. Fix them in place by inserting washer (F), lock washer (G) & bolts (E). Tighten using allen key (H).



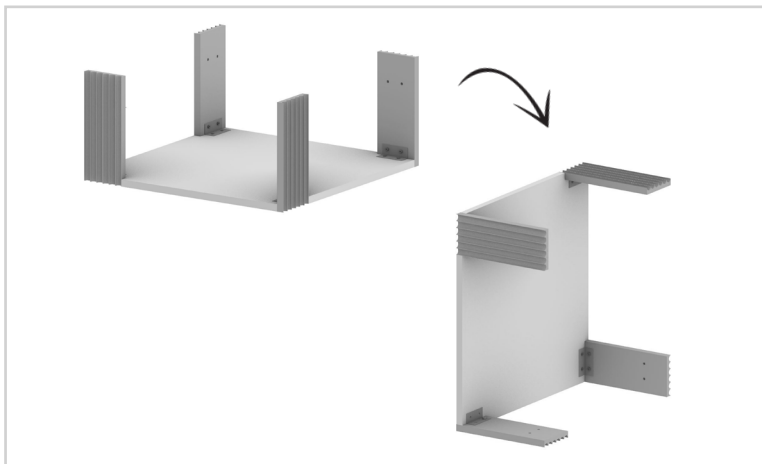
step 3:

Now, take the table shelf (B) and align the metal clips on the given slots. Fix it in place by using washer (F), lock washer (G) & bolts (E). Tighten them using allen key (H).



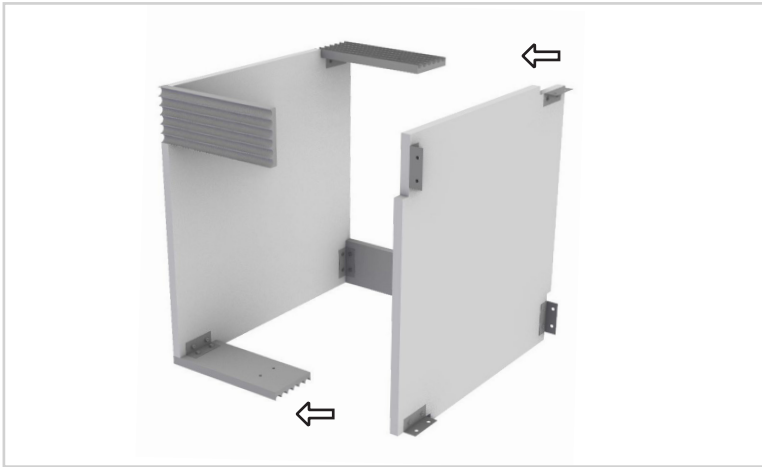
step 4:

Now, rotate the table sideways to insert the Shelf (B).



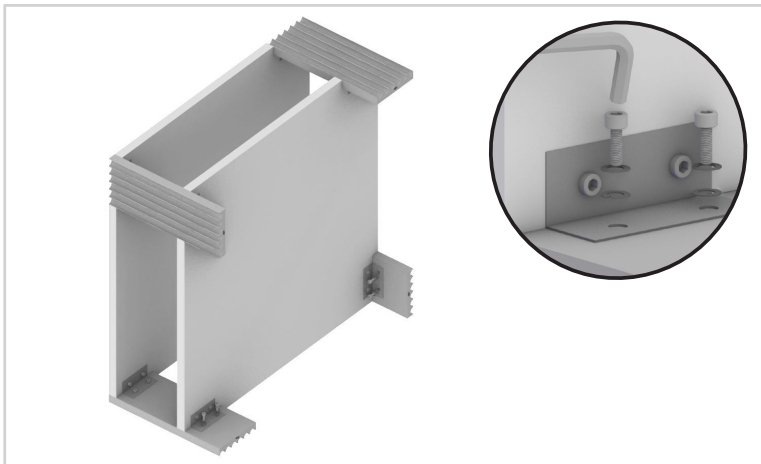
step 5:

Place the shelf (B) in such a way that the slots on the legs align with the holes on the metal clip (D).



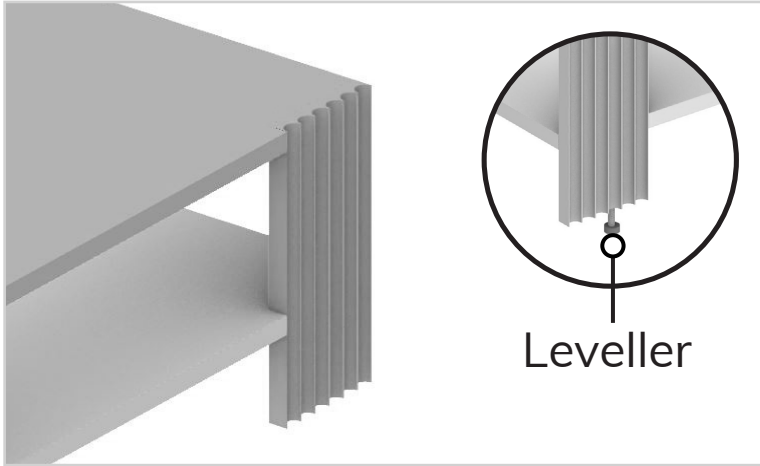
step 6:

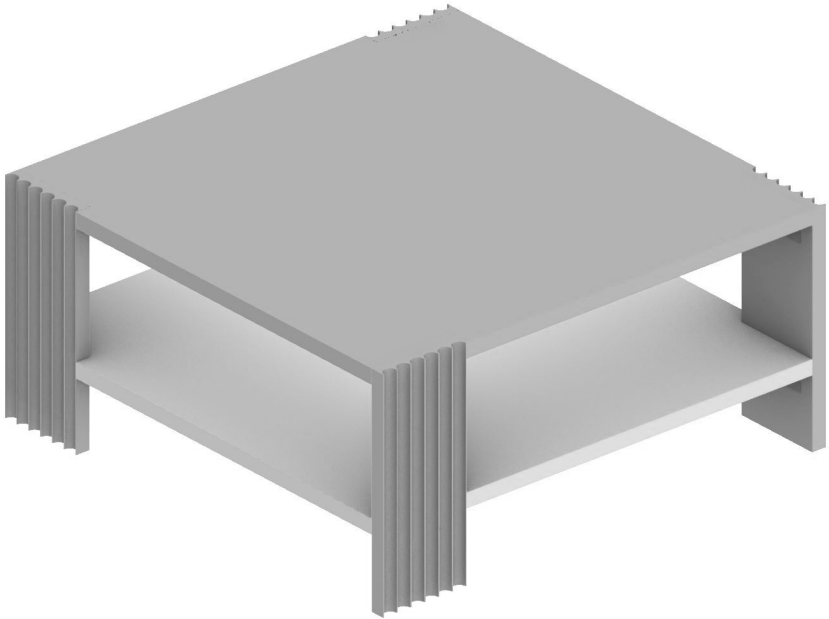
Fix it in place by using washer (F), lock washer (G) & bolts (E). Tighten them using allen key (H).



step 7:

If required, adjust the levellers according to the floor as shown in the image.





Voila! Your coffee table is now assembled and secure!

you've
got
a home
with us

