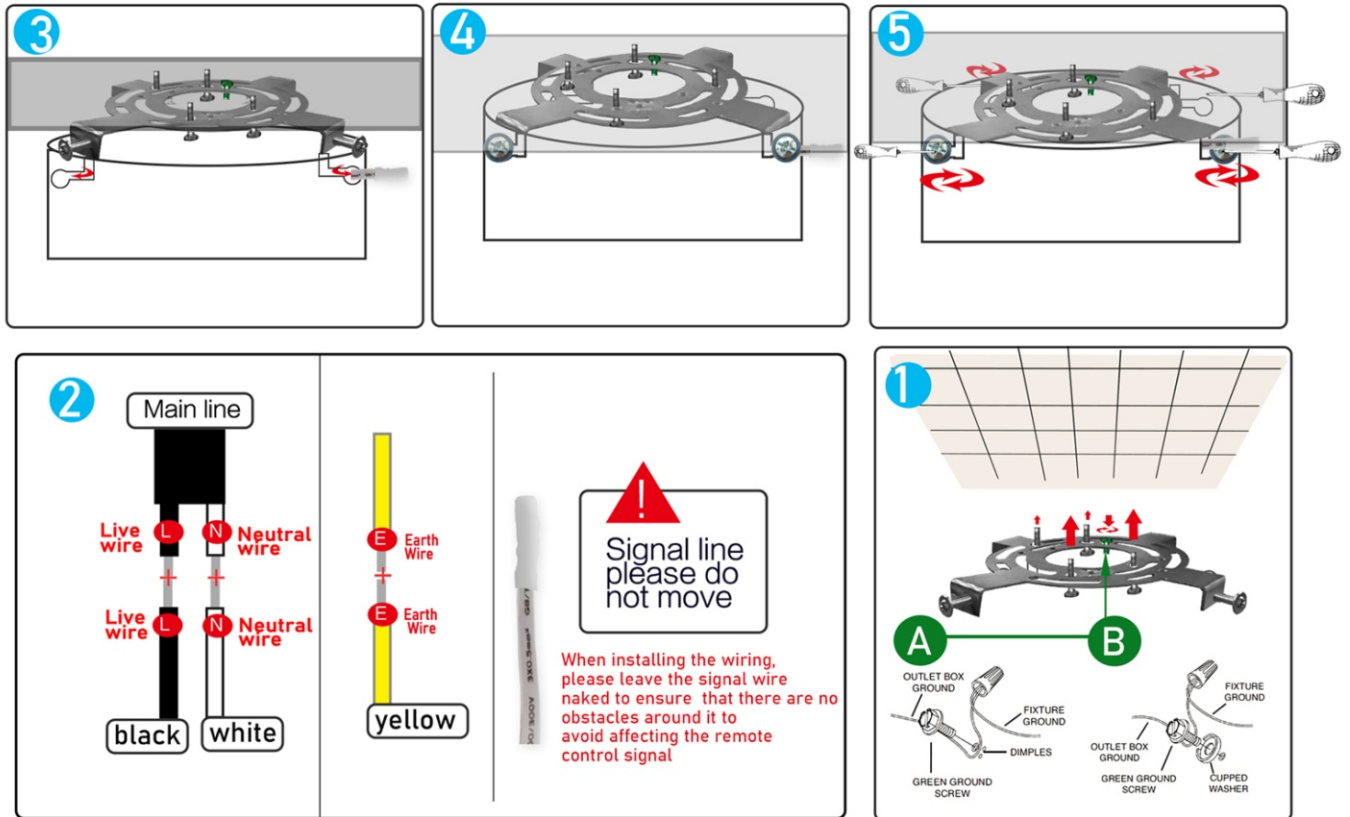


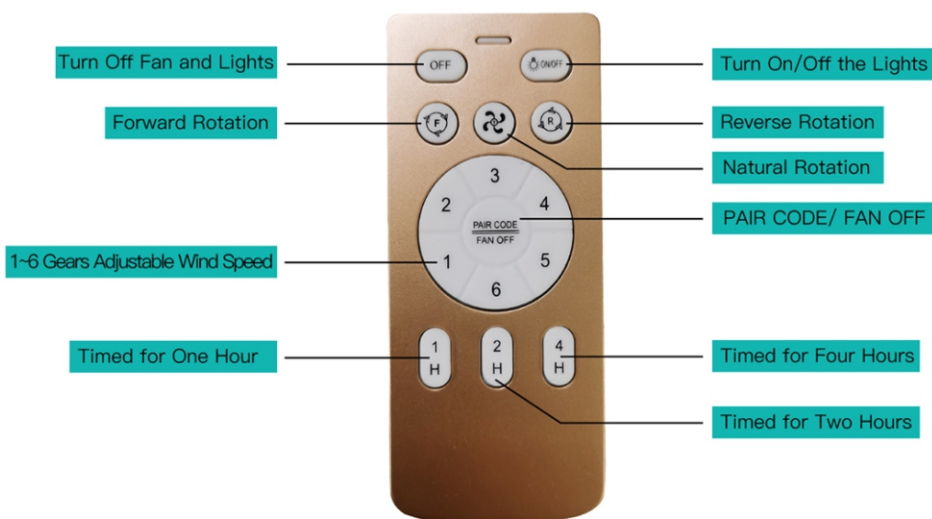
Controller Instruction:

This controller uses wireless digital technology, one-to-one directly control, large effective range, strong anti-jamming, able to control cross the wall.



Precautions:

- 1** Main motor high voltage, non-professional Please do not disassemble it.
- 2** When equipped with a pull switch as a wall switch, It must be turned on before this control can work.
- 3** If the remote control does not work, please check Is the battery connected correctly, or Insufficient power supply, disconnect between checks Controller and fan lights.
- 4** If not using for a long time, please turn off the power Turn on the power and remove the control battery.



Code matching: first turn off the wall switch, then turn on the wall switch within 5 seconds, and long press the PAIR CODE key the light flashes, and the code is successfully matched!