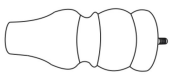
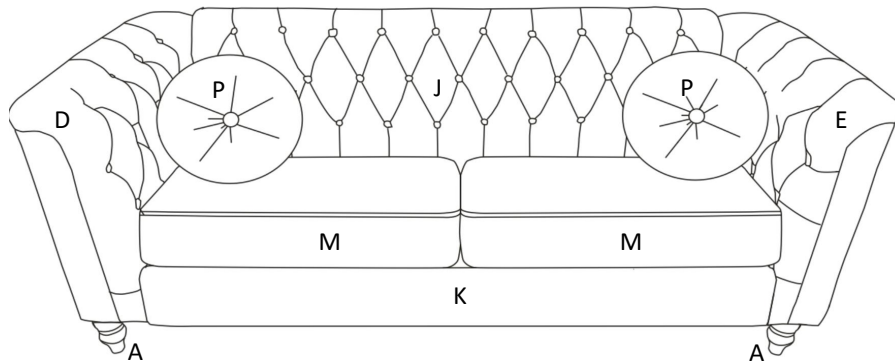
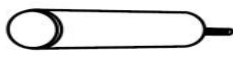


# ASSEMBLY INSTRUCTION

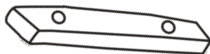
ITEM S5608/S5609/S5610/S5611/S5612/S5613



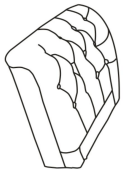
A:Legs 4PCS



B:Legs 1PC



C:Support wood 4PCS



D:Left arm 1PC



E:Right arm 1PC



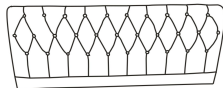
F:Bolt 8PCS



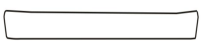
G:Bolt 4PCS



H:Allen Key 1PC



J:Back frame 1PC



K:Front board 1PC



M:Seat cushion 2PCS

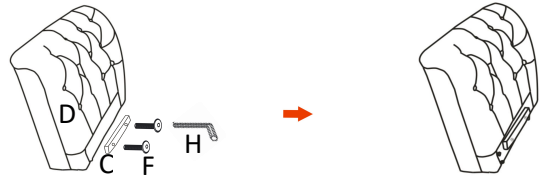


P:Round cushion  
2PCS



N: Base support 1PC

Turn the spare parts H&F clockwise to fixed C on the arm (D & E)



Turn the spare parts H& F clockwise to fixed C

