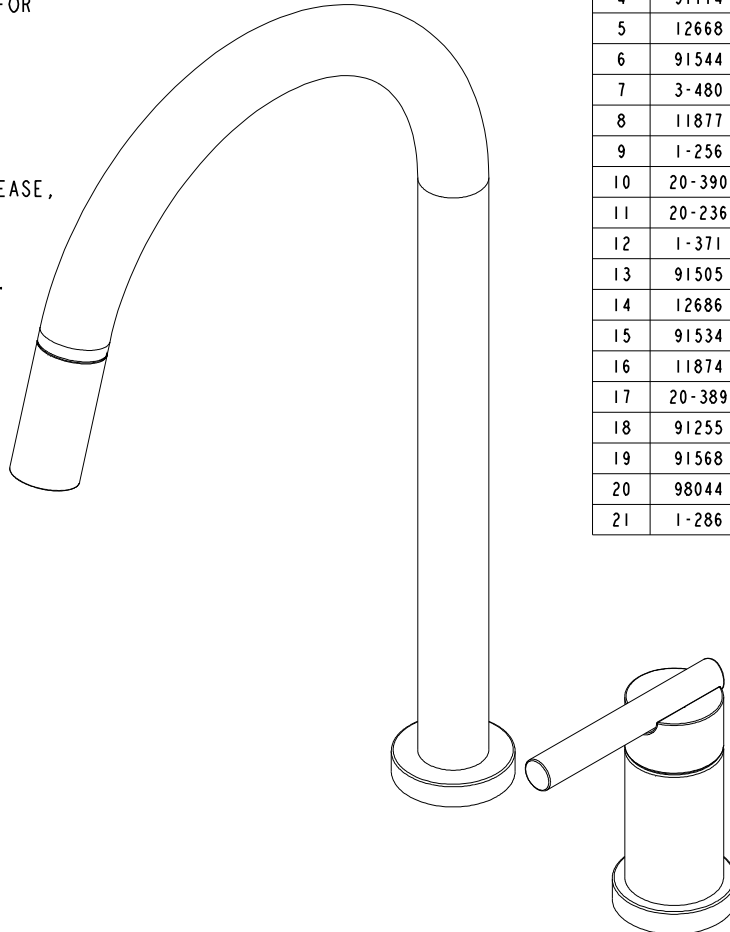


NOTES:

1. TO INSPECT ASSEMBLY, FOLLOW FIRST ARTICLE AND IN PROCESS INSPECTION SHEET.
2. PUT THESE ITEMS IN SEPARATE PLASTIC BAGS.
3. TORQUE 135 +/-5 LB-IN.
4. APPLY THIN COAT OF SILICON GREASE FOR ALL O-RINGS BEFORE INSTALLATION.
5. APPLY LOCTITE 242, IF SCREW DOES NOT HAVE NYLON PATCH.
6. APPLY LOCTITE 680.
7. PULL OUT HOSE AND APPLY SILICON GREASE, BETWEEN HOUSE AND SPOUT, 10" FROM OUTLET TO HOSE.
8. TORQUE SWIVEL NUT TO 10 +/-2 LB-IN.
9. TORQUE TO 10 +/-2 LB-FT.
10. TORQUE TO 7 +/-2 LB-IN.
11. PARTIALLY THREAD MOUNTING KIT ONTO SHANK.
12. DO NOT DOCK SPRAY HEAD TO SPOUT WHEN PACKAGING.



BILL OF MATERIAL (CURRENT LEVEL)

ITEM	PT/ASSY	DESCRIPTION	TYPE	QTY.
1	20-265	SPOUT BASE ASM	ASSEMBLY	1
2	91712	SLEEVE	PART	1
3	12671	ADAPTER EXTENSION	PART	1
4	91114	O-RING, #2- 116, EPDM, 65-75 DURO, NSF 61	PART	4
5	12668	SPOUT, PULLDOWN	PART	1
6	91544	MAGNET DOCKING	ASSEMBLY	1
7	3-480	SPRAY HEAD, EAST LINEAR	ASSEMBLY	1
8	11877	HOSE, PULLDOWN SWIVEL	ASSEMBLY	1
9	1-256	MOUNTING KIT	ASSEMBLY	2
10	20-390	ESCUTCHEON ASM	ASSEMBLY	1
11	20-236	MAIN BODY ASM	ASSEMBLY	1
12	1-371	CARTRIDGE	PART	1
13	91505	O-RING, #2-123, EPDM, 65-75 DURO	PART	1
14	12686	HANDLE HUB, CONTEMP	PART	1
15	91534	CARTRIDGE STEM INSERT	PART	1
16	11874	HANDLE ADAPTER SCREW	PART	1
17	20-389	HANDLE ASM	ASSEMBLY	1
18	91255	O-RING, #2- 011, EPDM, 65-75 DURO, NSF-61	PART	2
19	91568	RETAINER CLIP	PART	1
20	98044	LABEL - HOT	PART	1
21	1-286	WEIGHT ASM	ASSEMBLY	1

-	E	EN-4300s	03/29/21	R.S.
-	D	EN-4167	06/11/20	JMR
-	C	EN-3974	09/25/19	J.M.
-	B	EN-3931b	09/09/19	J.M.
-	A	EN-3739	11/09/18	J.M.
-	-	EN-3215	09/06/18	J.M.
ZONE	REV	DESCRIPTION	DATE	APPROVED

COPYRIGHT 2005 BRASSTECH, INC. THESE DRAWINGS AND THE DESIGNS DEPICTED HEREIN ARE THE PROPRIETARY PROPERTY OF BRASSTECH. ANY USE OR REPRODUCTION IS SUBJECT TO THE EXPRESS APPROVAL OF BRASSTECH. UNAUTHORIZED USE IS STRICTLY PROHIBITED. ALL RIGHTS RESERVED.

TESTING	-	-	-
ASSEMBLY	-	-	-
PLATING	-	-	-
POLISHING	-	NEXT ASSY	USED ON
MACHINING	-	APPLICATION	
TOOLING FIXTURE #	REMOVE ALL BURRS AND SHARP EDGES		

UNITS ARE: INCHES [MM]
TOLERANCES ARE:
FRACTIONS DECIMALS ANGLES
±1/16" .X ±.1 [2.5]
.XX ±.06 [1.5]
(X.XXX) DENOTES CRITICAL DIMS.
ALL THREADS ARE CRITICAL

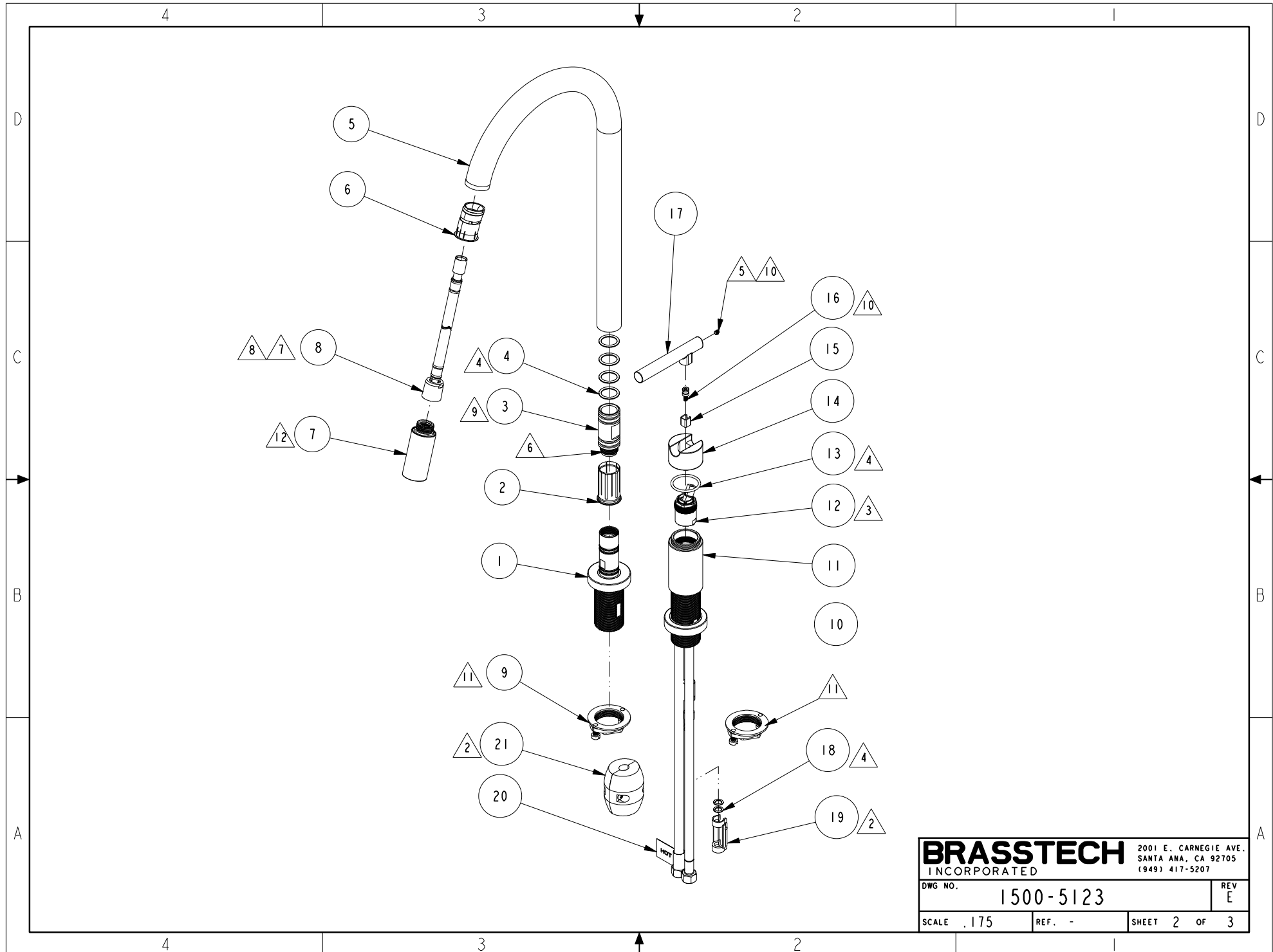
DRAWN	JIMSON	03/29/21
CHECKED	R.S.	03/29/21
APPROVED	R.S.	03/29/21

BRASSTECH 2001 CARNEGIE AVE.
INCORPORATED SANTA ANA, CA 92705
(949) 417-5207

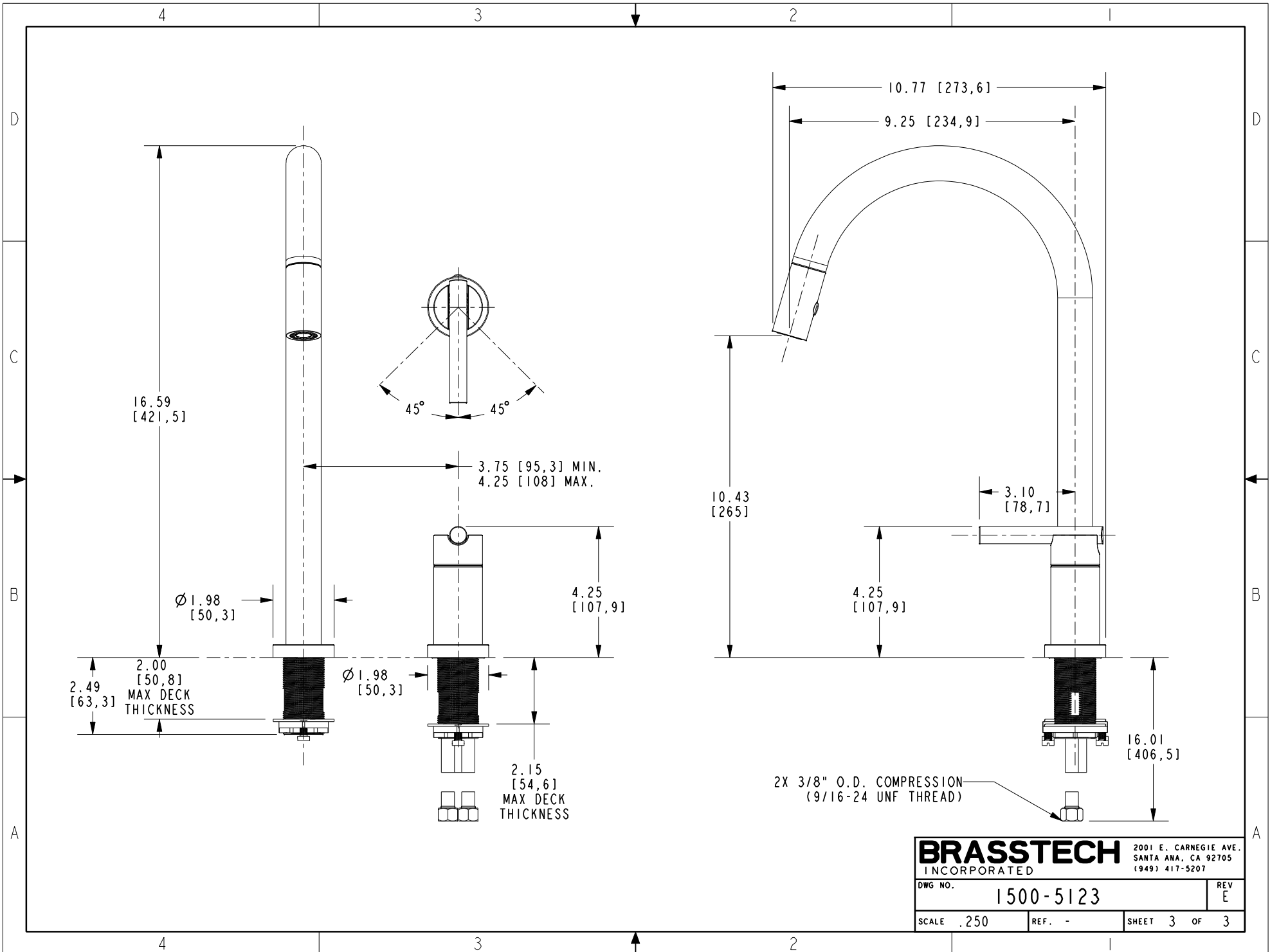
**KITCHEN FAUCET PULLDOWN
W/ REMOTE HANDLE**

DWG NO. **1500-5123** REV **E**

SCALE .325 REF. - SHEET | OF 3



BRASSTECH		2001 E. CARNEGIE AVE. SANTA ANA, CA 92705 (949) 417-5207
DWG NO.	1500-5123	REV E
SCALE .175	REF. -	SHEET 2 OF 3



BRASSTECH		2001 E. CARNEGIE AVE. SANTA ANA, CA 92705 (949) 417-5207
DWG NO.	1500-5123	REV E
SCALE .250	REF. -	SHEET 3 OF 3