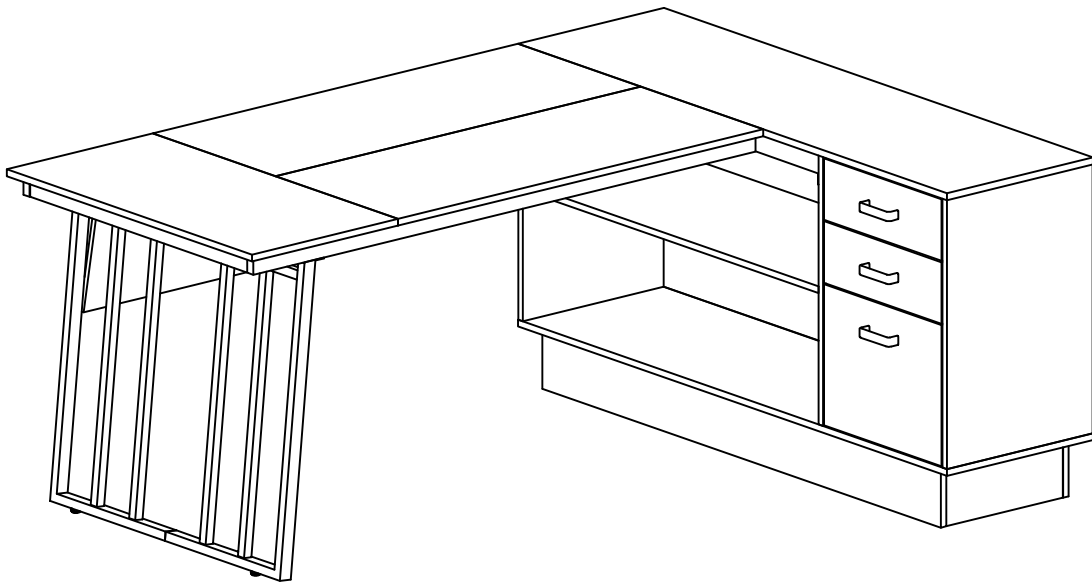


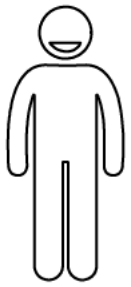
Assembly Instructions



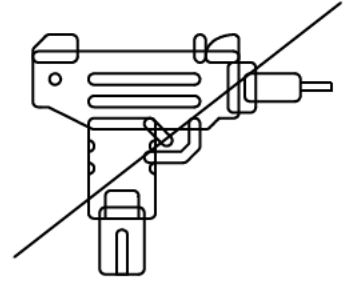
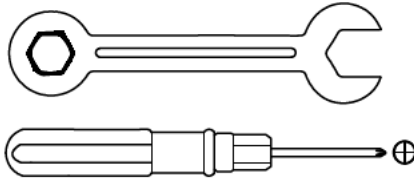
Executive Desk

Assembly Instructions:

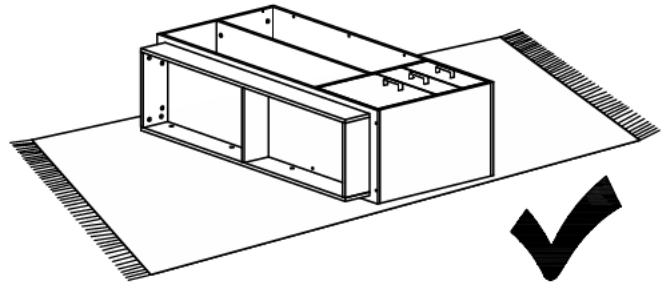
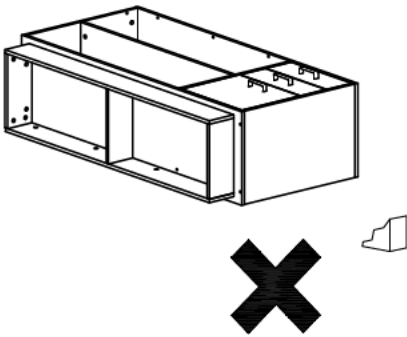
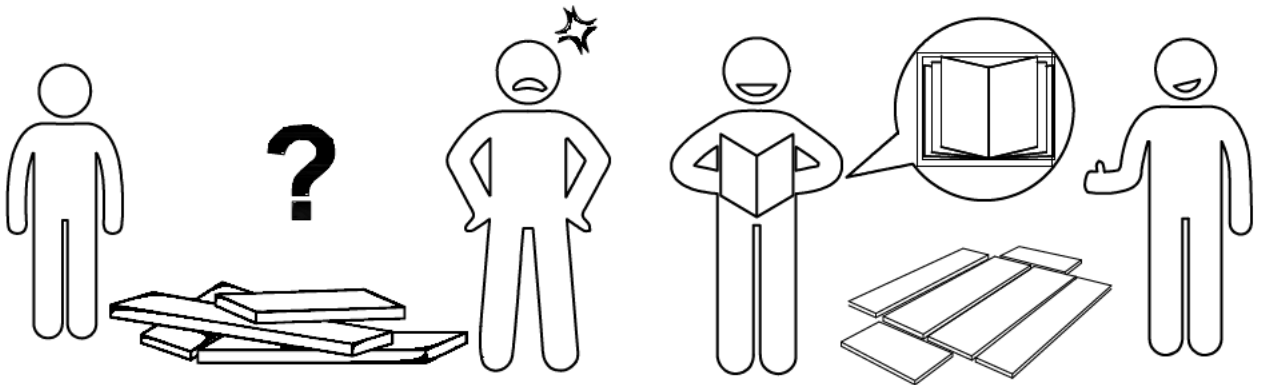
1. Carefully read these instructions and keep them for future reference.
2. Refer to the parts list for guidance and ensure that you have all the pieces before starting the assembly process, if anything is missing, damaged, incorrect, contact us **FIRSTLY BEFORE** assembling.
3. When assembling, place all parts on a soft, clean, and flat surface, such as a carpet, to prevent any scratches.
4. To avoid misalignment of the holes, Please don't full tighten the screws until you ensure all parts in place.

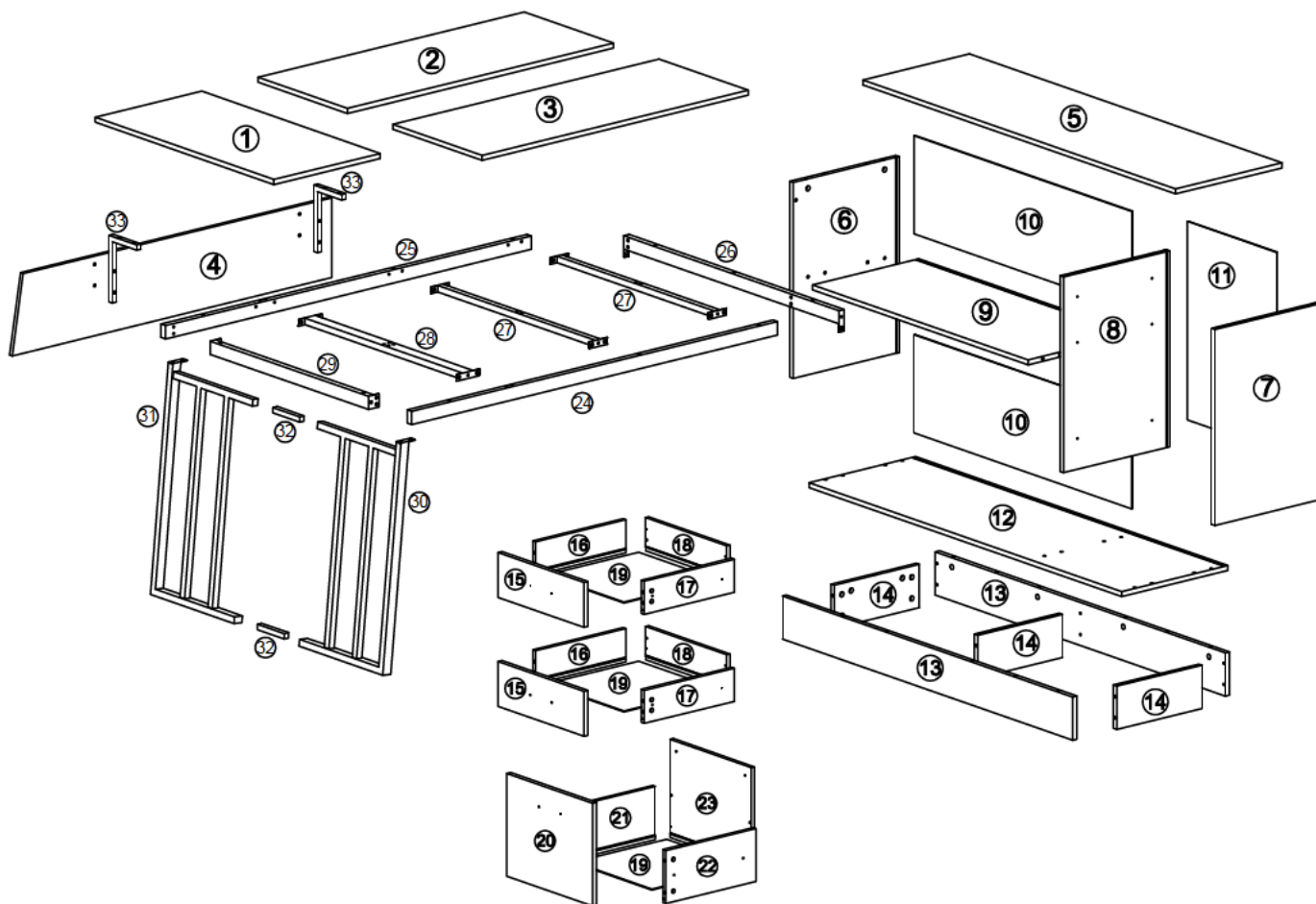


X2



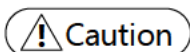
When using the electric screwdriver ,
Reduce the power and torque to avoid damaging the furniture





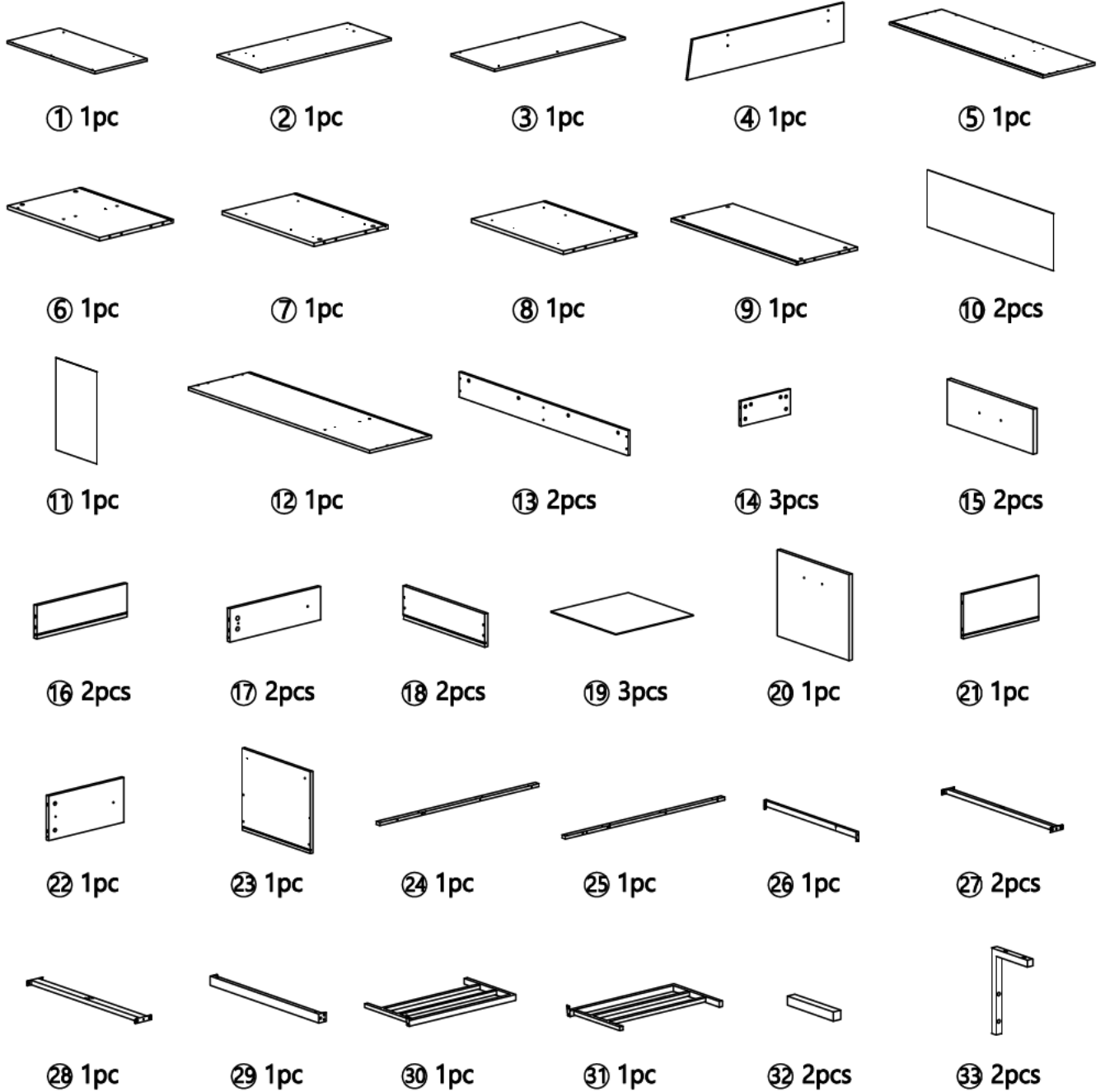
SKU	PART NO.	QUANTITY
JW0723-A	①	1
	⑥	1
	⑦	1
	⑧	1
	⑭	3
	⑮	2
	⑯	2
	⑰	2
	⑱	2
	⑲	3
	⑳	1
	㉑	1
	㉒	1
	㉓	1
	㉔	2
	㉕	2

SKU	PART NO.	QUANTITY
JW0723-B	②	1
	③	1
	④	1
	⑤	1
	⑨	1
	⑩	2
	⑪	1
	⑫	1
	⑬	2
	㉖	1
	㉗	1
	㉘	1
	㉙	2
	㉚	1
	㉛	1
	㉜	1



Make sure all parts are included. Most board parts are labeled or stamped on the raw edge. Contact us for free replacement if having damaged or missing parts.

Parts & Hardware List

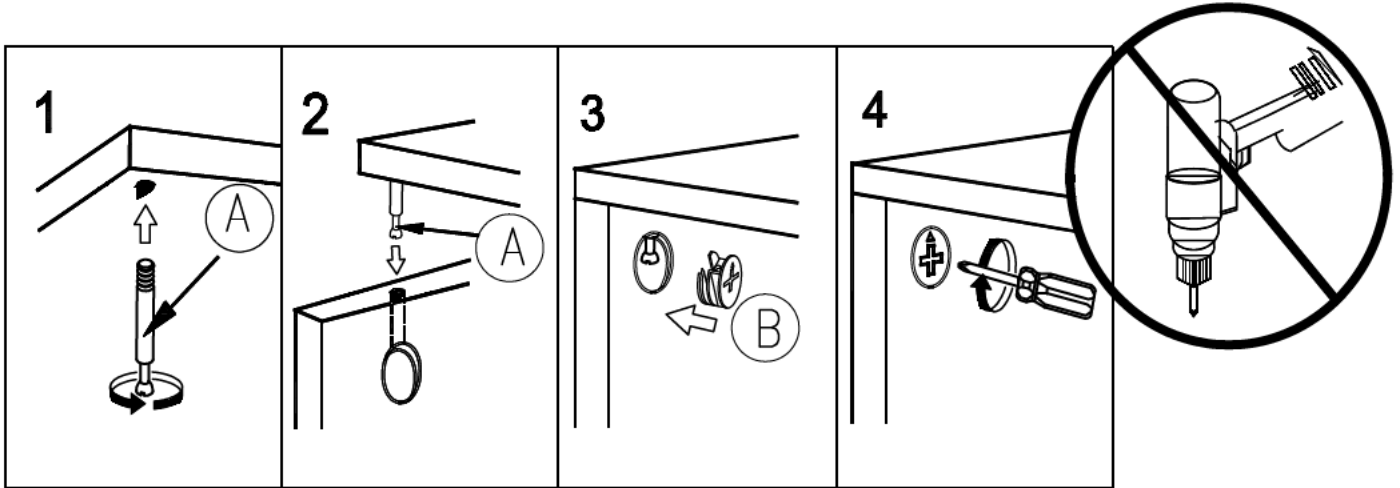


Hardware List

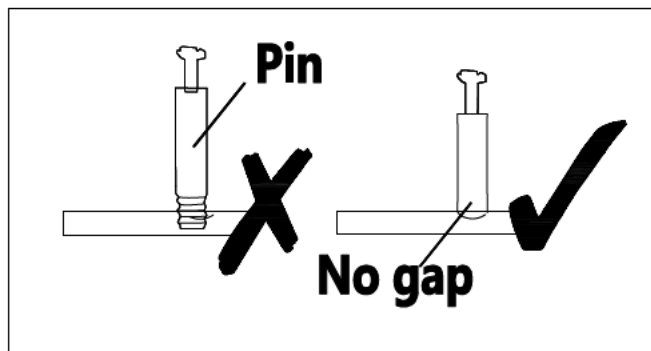
A	X48+1	B	X36+1	C	X12+1	D	X23+1	E	X24+1	F	X12+1	G	X6+1
φ6X35mm	φ15X12mm	φ15X10mm	φ8X30mm	φ3.5X14mm	φ4X35mm	φ7X47mm							
H	X1	I	X28+1	J	X8+1	K	X8+1	L	X4+1	M	X13+1	N	X2+1
M4X55mm	M6X12mm	M6X25mm	M6X30mm	M6X40mm	M6X50mm	M6X50mm							
O	X3	P	X6+1	Q	X2	R	X2	S	X6	T	X6		
102X27X19mm	M4X18mm	M6XØ28mm	L352	L350mm	L350mm	L350mm							

Installation of Cams and Pins

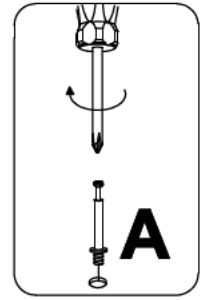
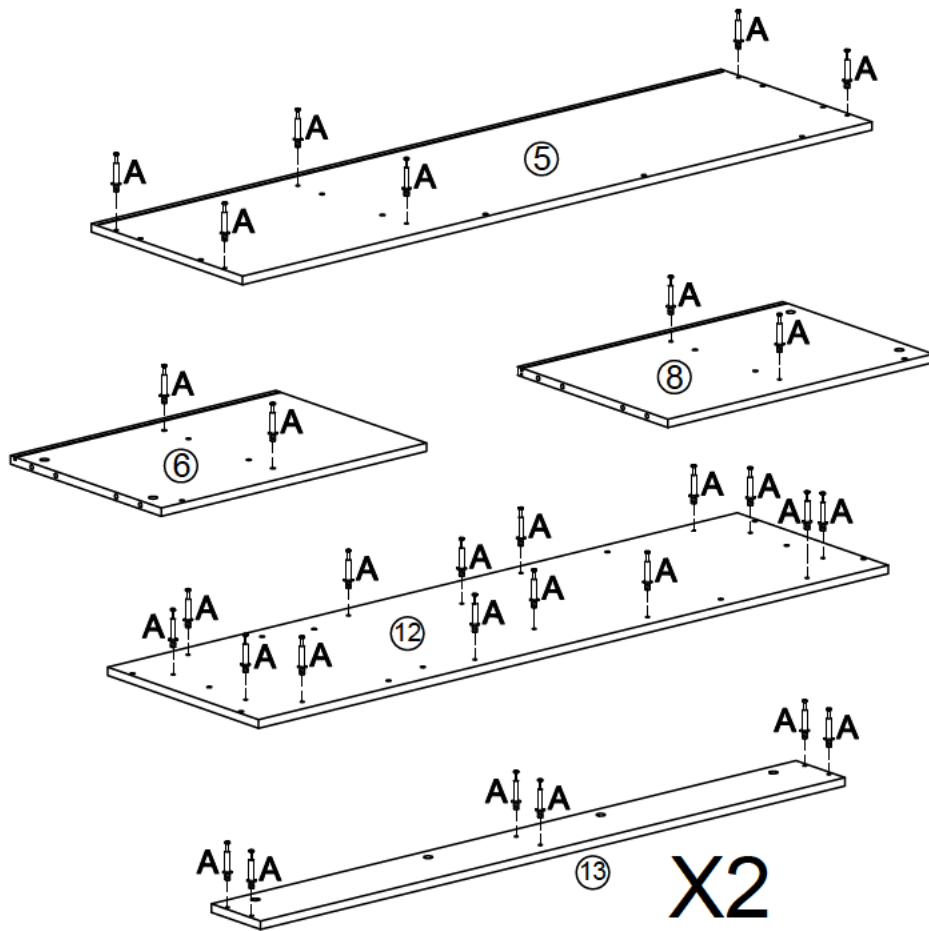
Screw the pin into the hole. To set the cams correctly, ensure that the arrow on the cam is opening to the hole of the pin it is locking. Lock the cam by turning the cam head with a screwdriver until it is tightened. Please do not use an electric screwdriver to assemble the unit.



Read each step carefully before starting. It is very important that each step of instruction is performed in the correct order. If these steps are not followed in sequence, assembly difficulties will occur.

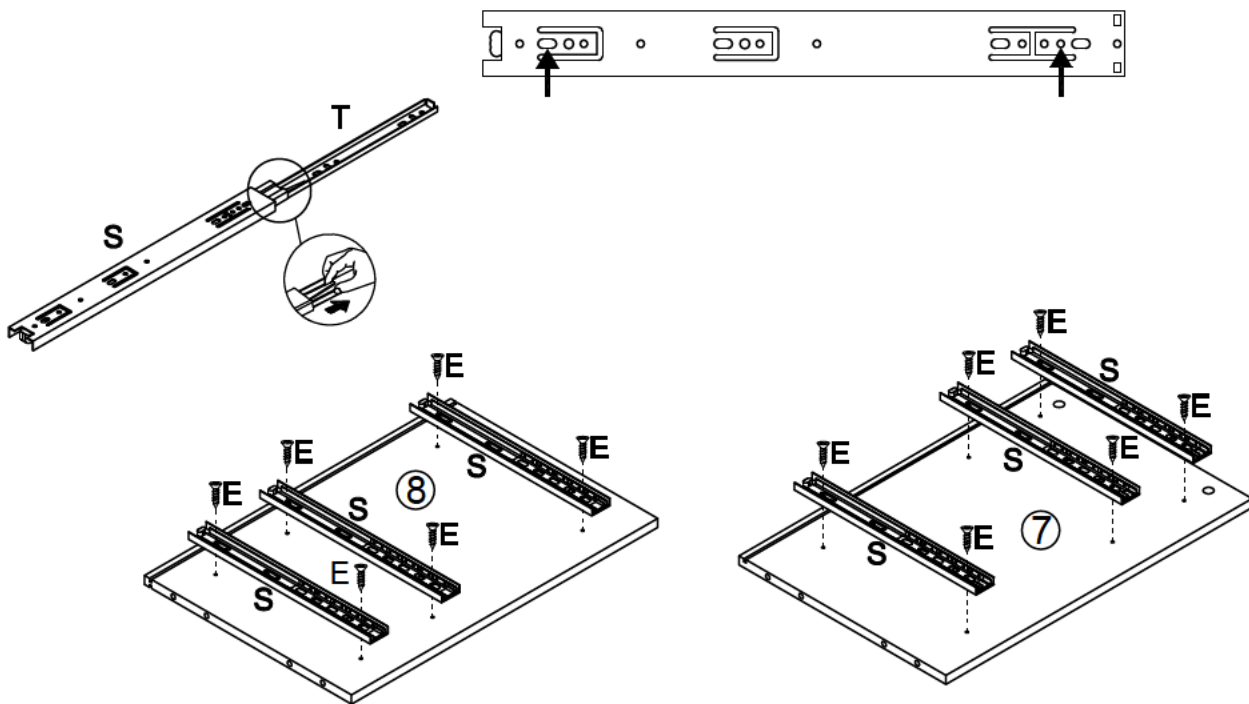


1



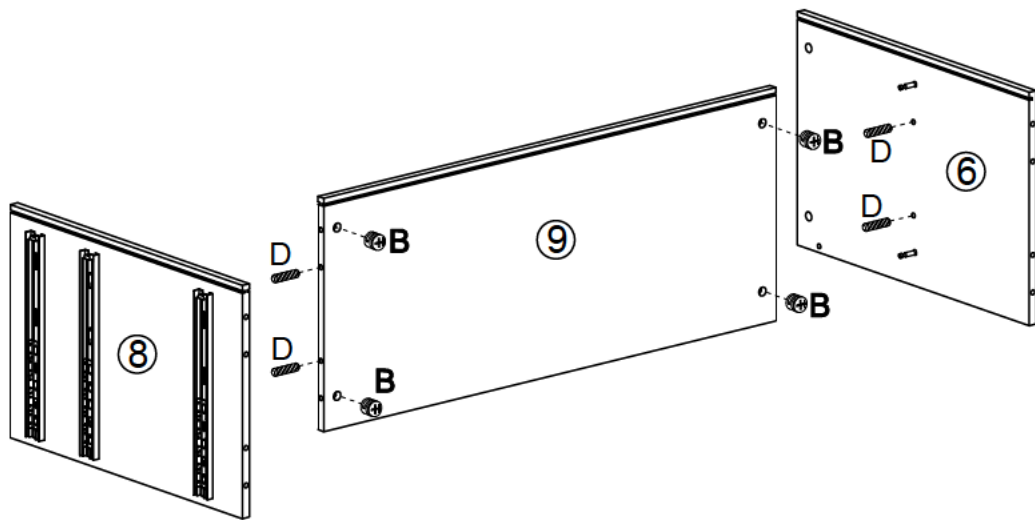
A	X36
φ6X35mm	



2



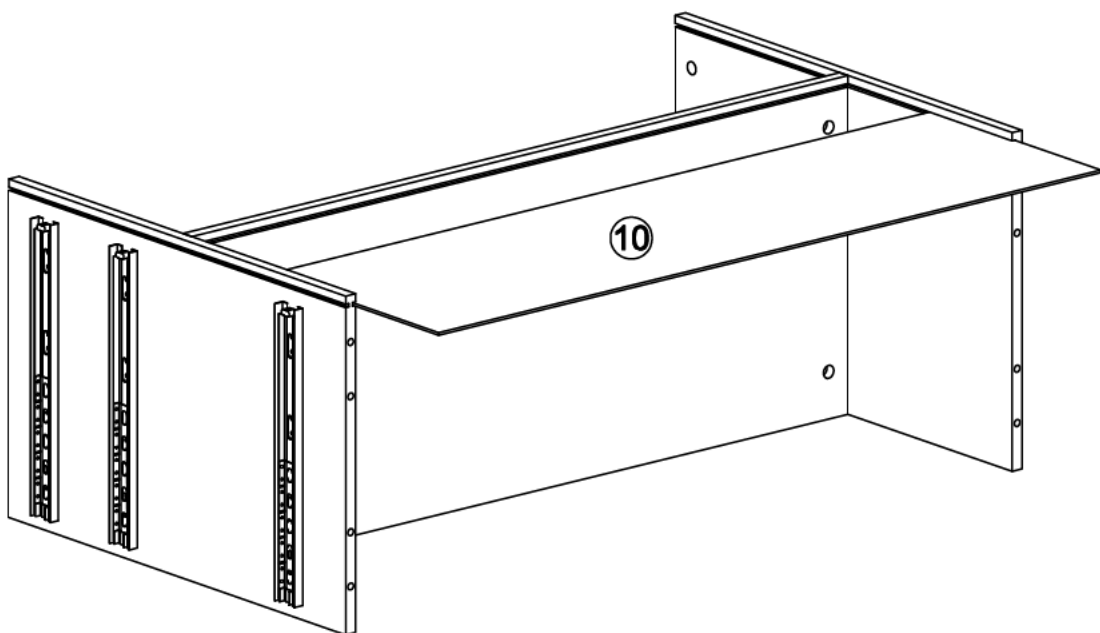
E	X12	S	X6
φ3.5X14mm		L350mm	

3

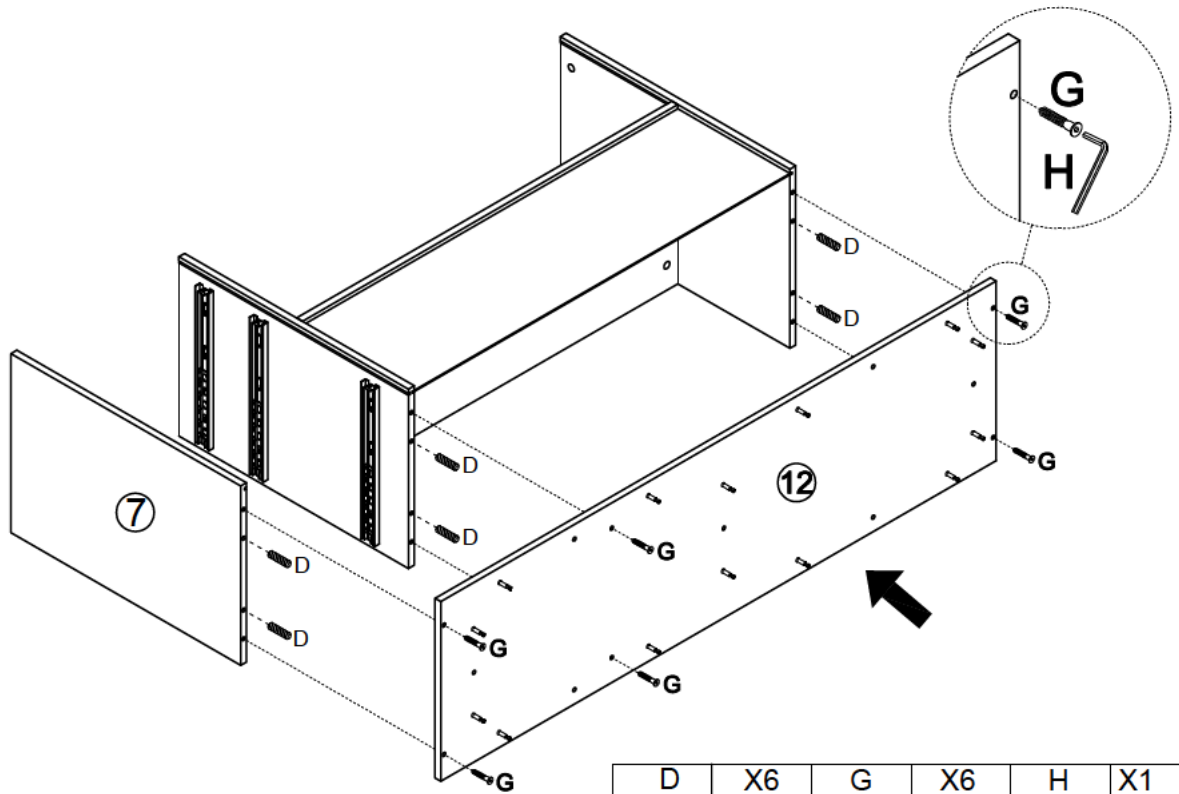



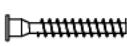

B	X4	D	X4
			
φ15X12mm		φ8X30mm	

4

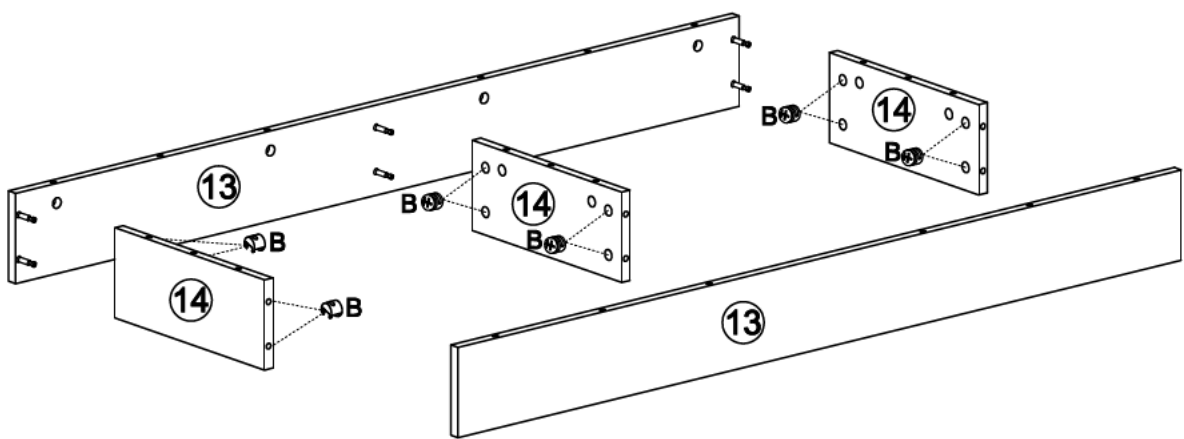



5



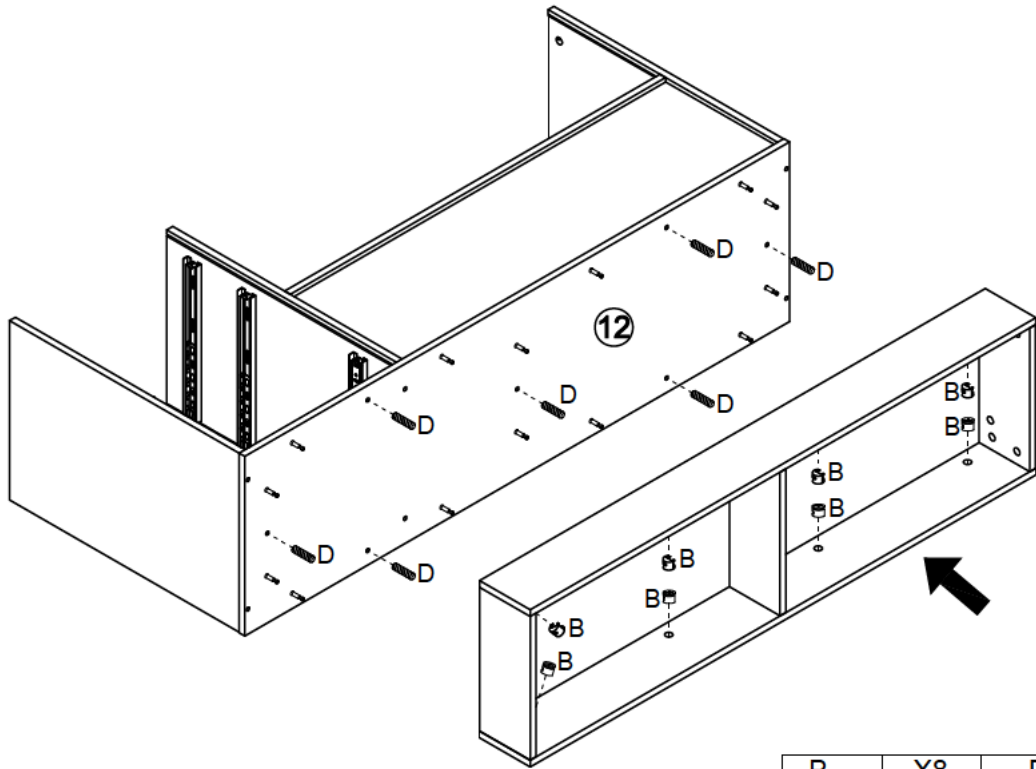
D	X6	G	X6	H	X1
					
φ8X30mm		φ7X47mm		M4X55mm	



6



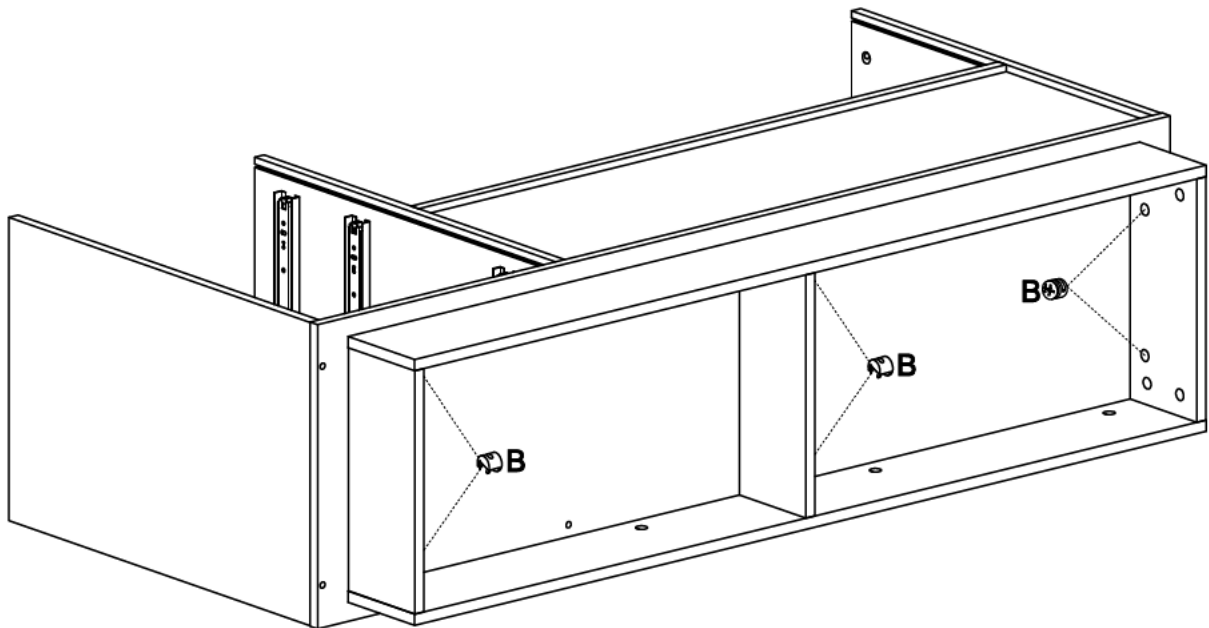
B	X12
	
φ15X12mm	


7



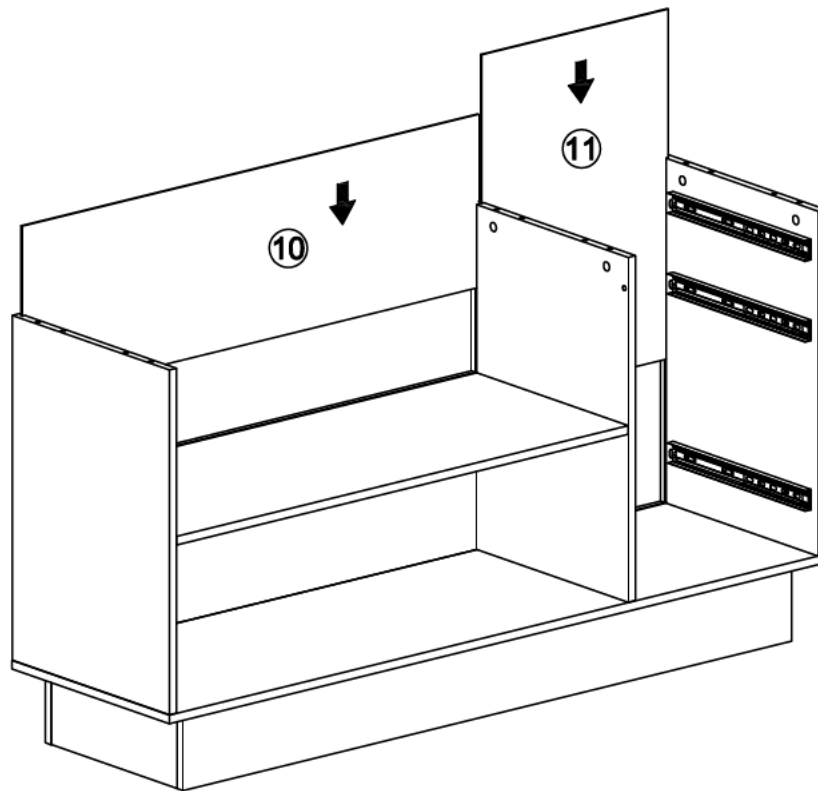
B	X8	D	X7
			
φ15X12mm		φ8X30mm	

8

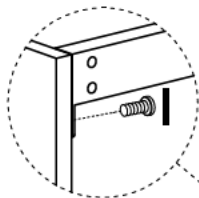


B	X6
	
φ15X12mm	

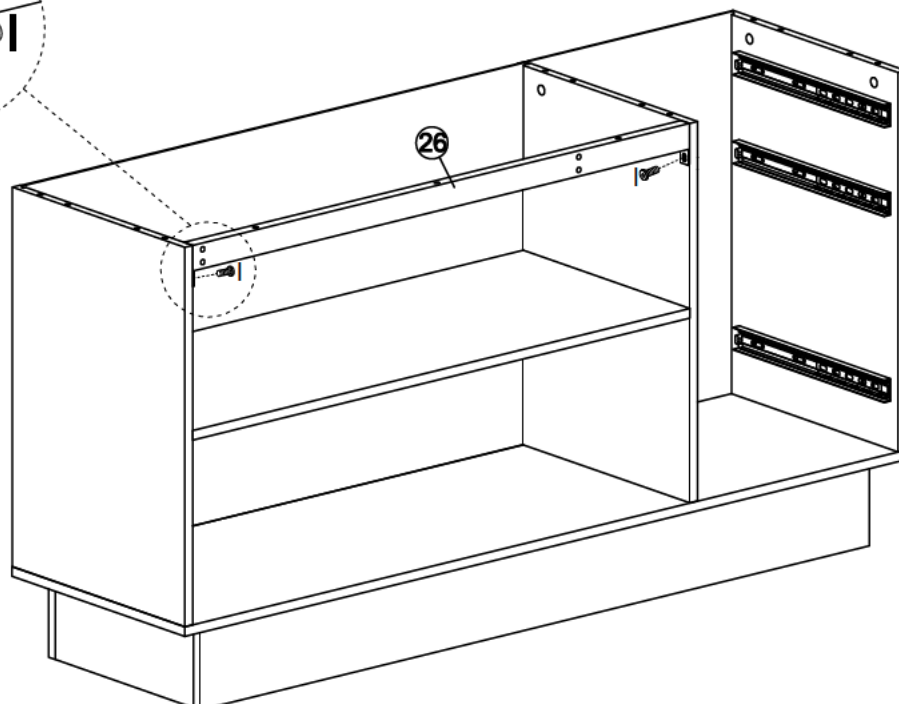
9

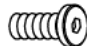


10



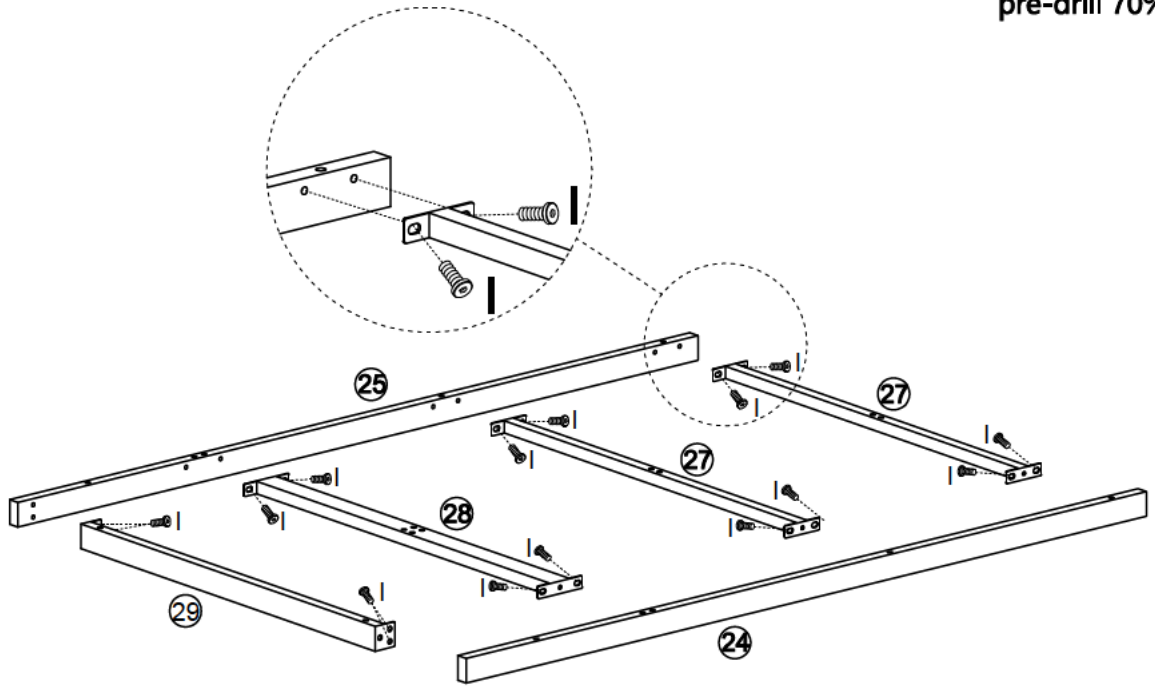
screw down




I	X2
	
M6X12mm	

11

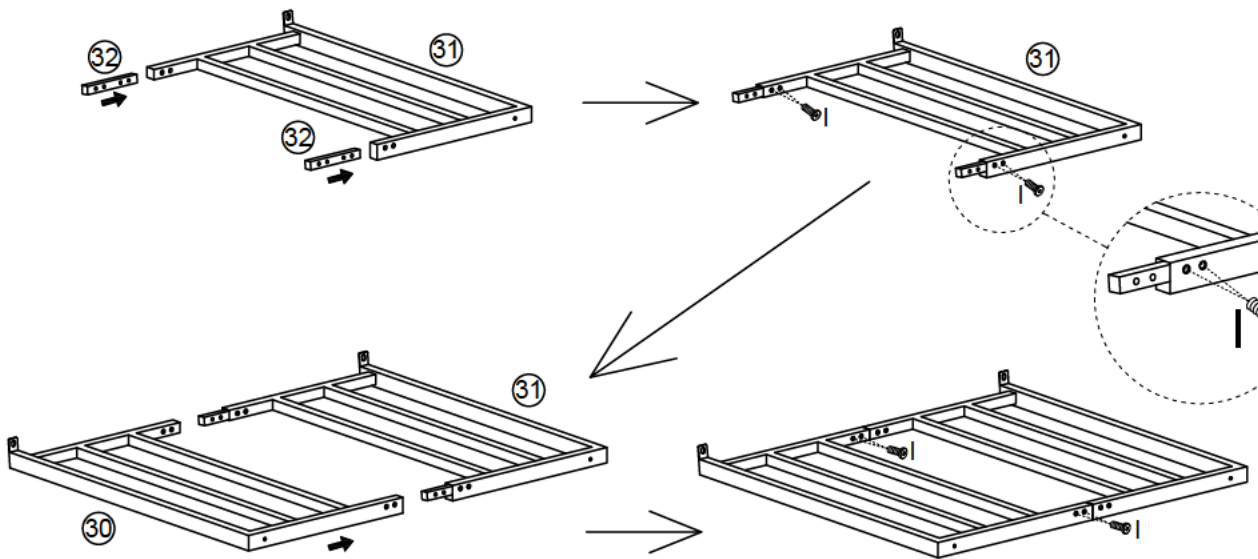
pre-drill 70%




I	X16
	
M6X12mm	

12

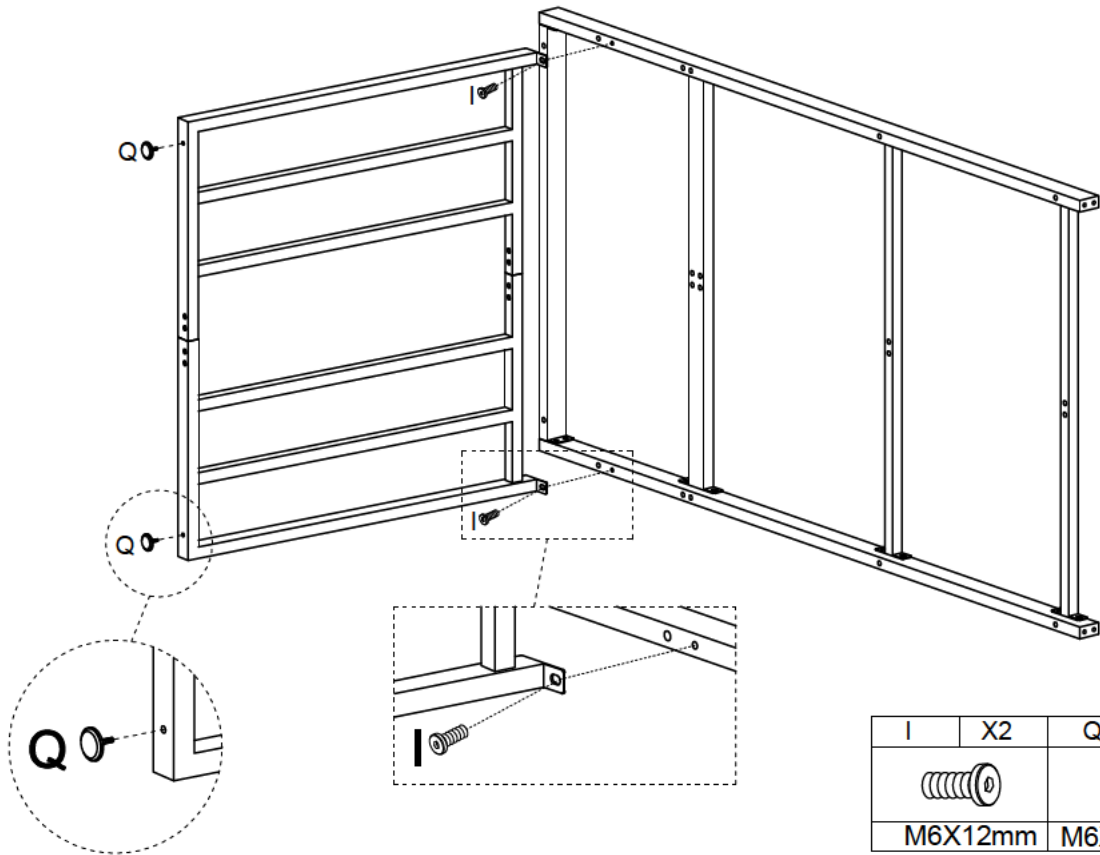
screw down





I	X8
	
M6X12mm	

13

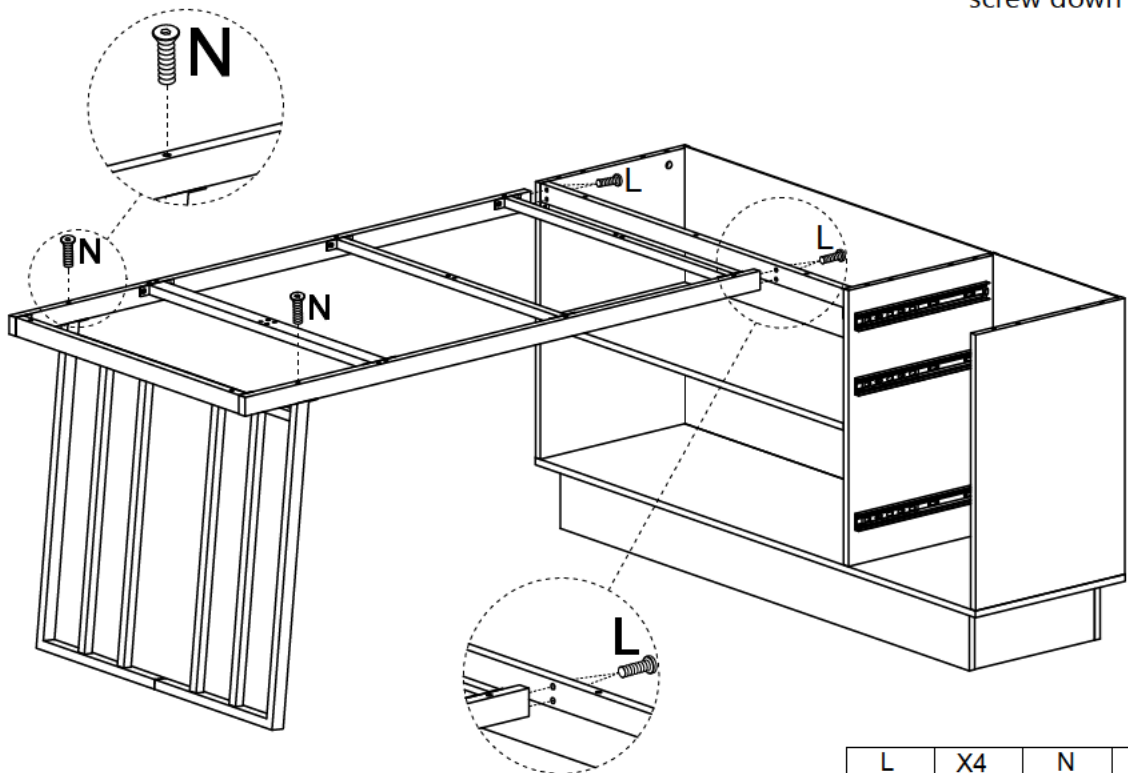
pre-drill 70%

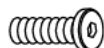
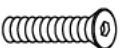


I	X2	Q	X2
			
M6X12mm		M6XØ28mm	

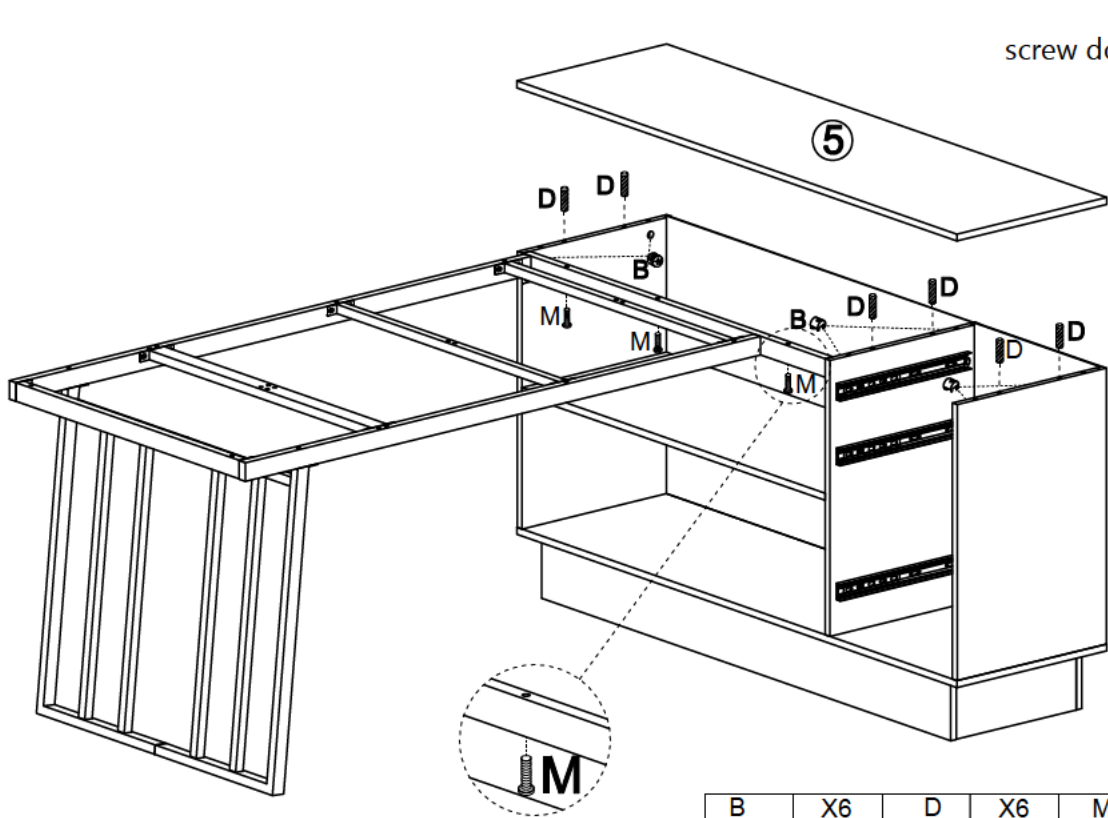
14

screw down






L	X4	N	X2
			
M6X40mm		M6X50mm	

15

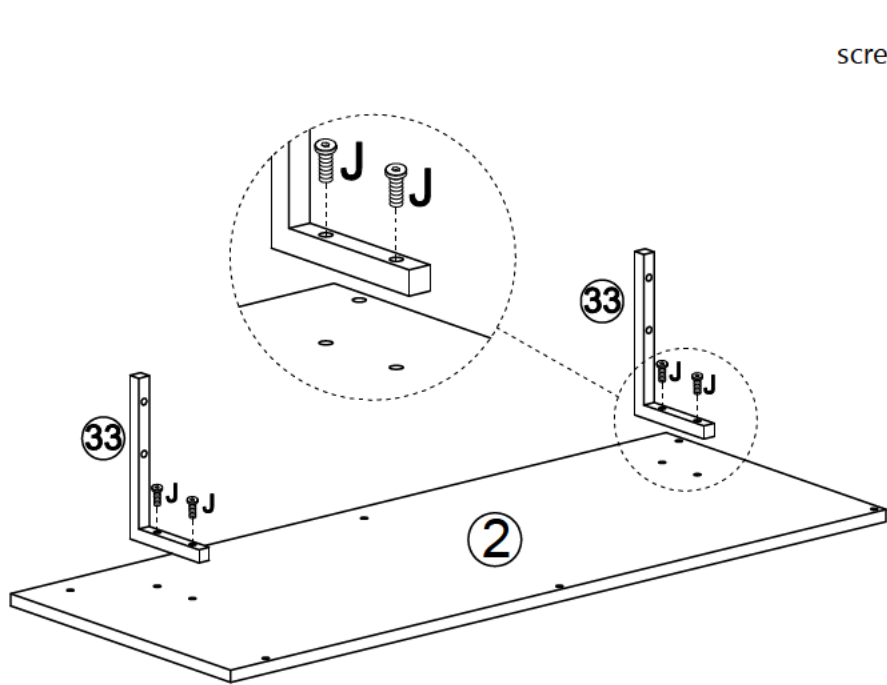


screw down 




B	X6	D	X6	M	X3
					
φ15X12mm		φ8X30mm		M6X50mm	

16



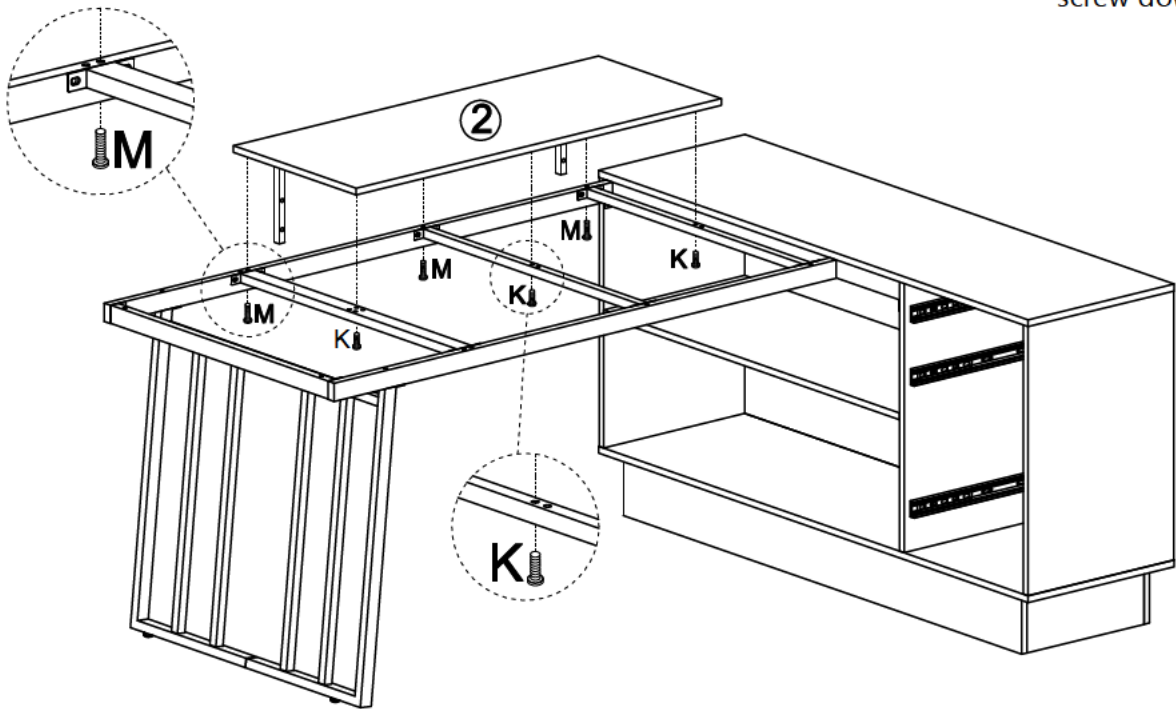
screw down 

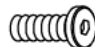
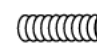


J	X4
	
M6X25mm	

17

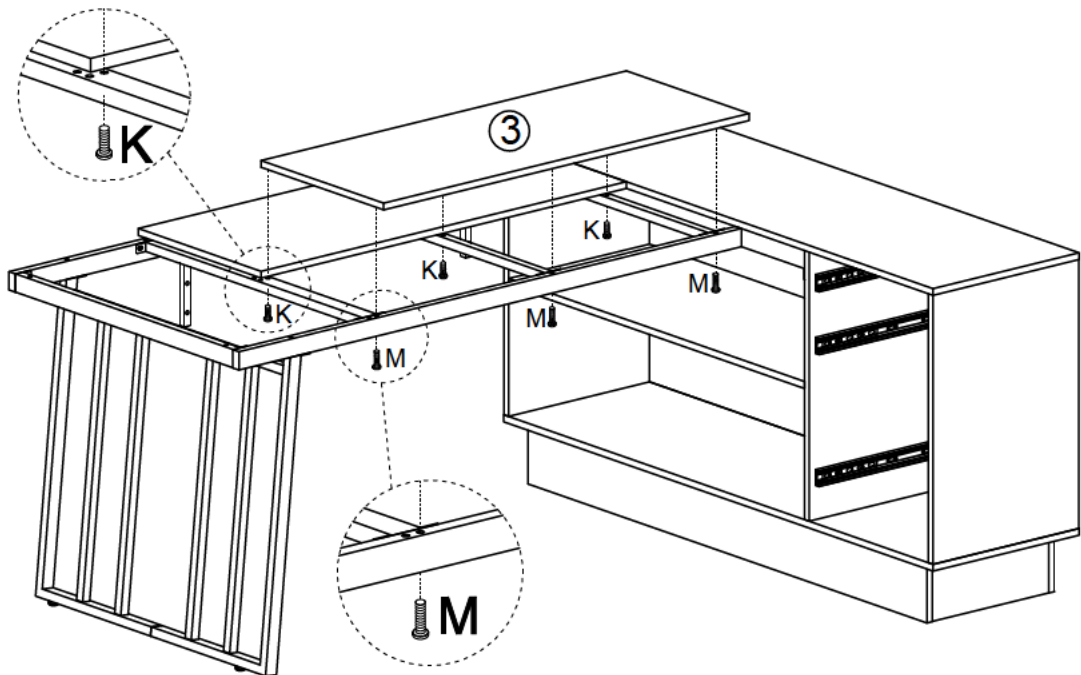
screw down 

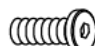



K	X3	M	X3
			
M6X30mm		M6X50mm	

18

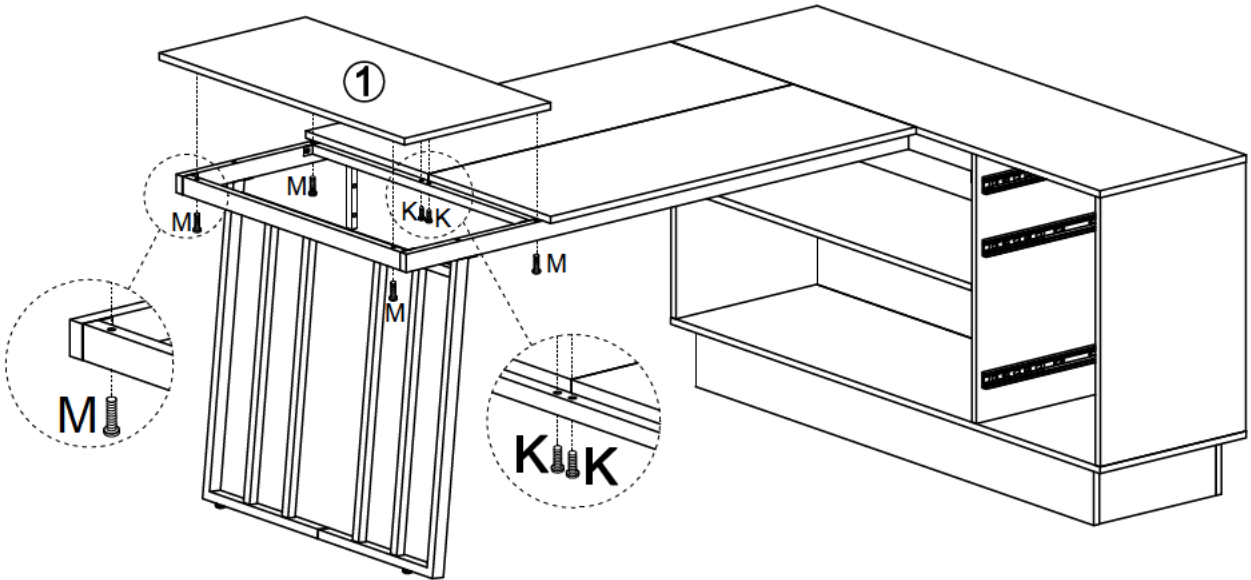
screw down 





K	X3	M	X3
			
M6X30mm		M6X50mm	

19

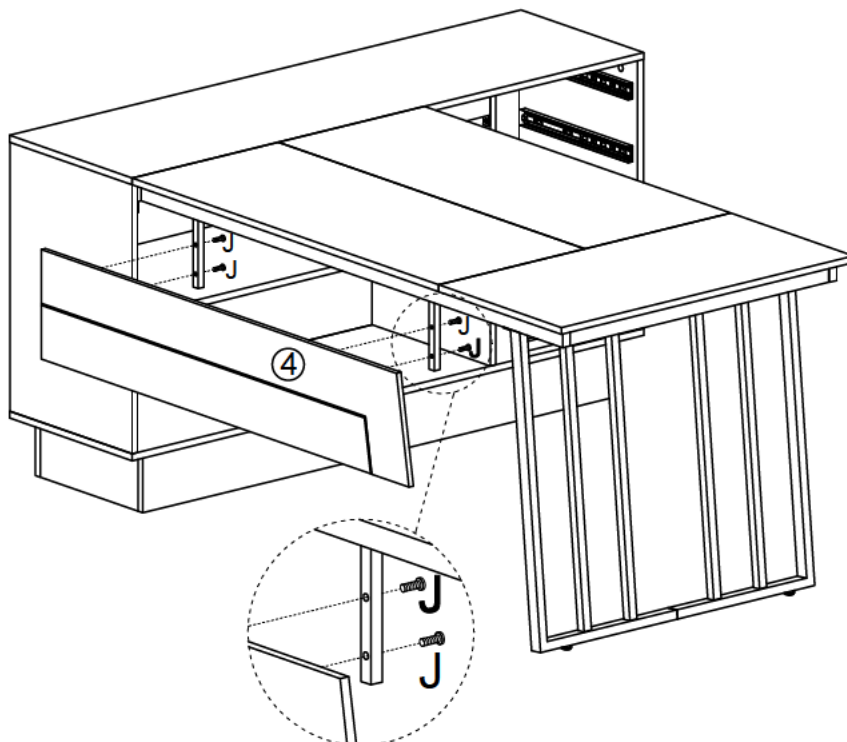
screw down 

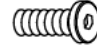


K	X2	M	X4
			
M6X30mm		M6X50mm	

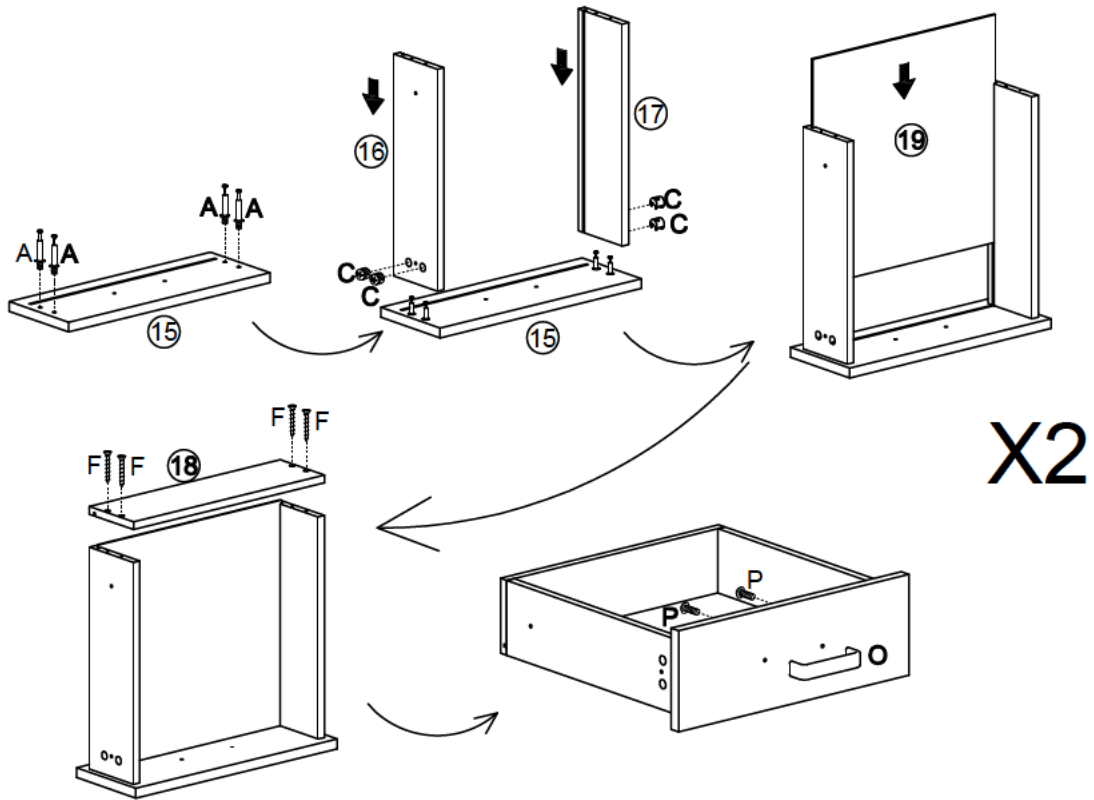
20

screw down 



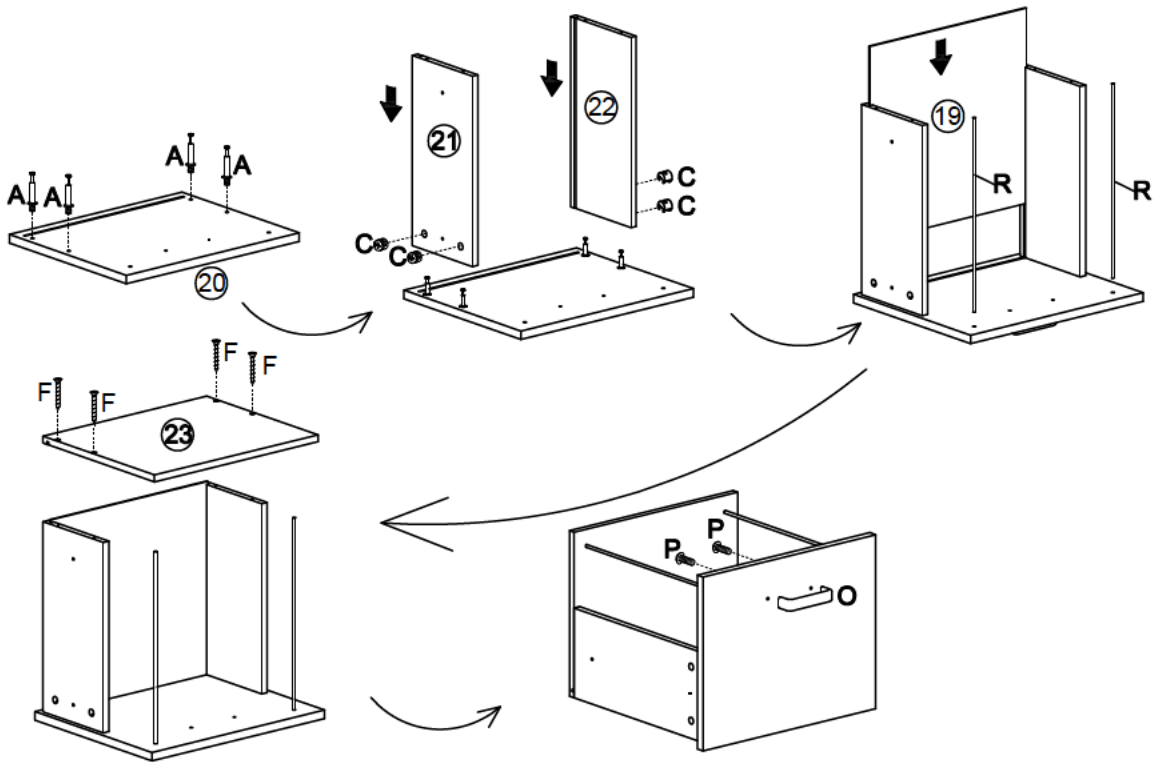
J	X4
	
M6X25mm	

21



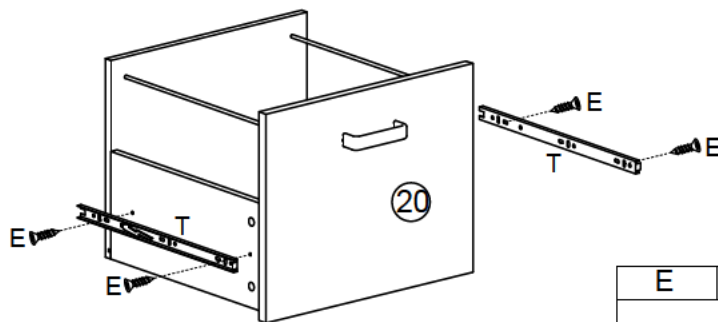
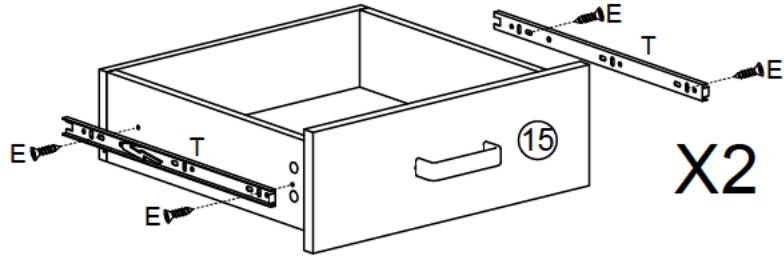
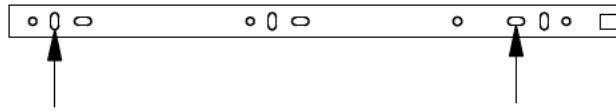
A	X8	C	X8	F	X8	O	X2	P	X4
φ6X35mm		φ15X10mm		φ4X35mm		102X27X19mm		M4X18mm	



22



A	X4	C	X4	F	X4	O	X1	P	X2	R	X2
φ6X35mm		φ15X10mm		φ4X35mm		102X27X19mm		M4X18mm		L352	

23



E	X12	T	X6
			
φ3.5X14mm		L350mm	

24

