

# BATHROOM SINK

### SUGGESTED TOOLS AND MATERIALS



**A**  
Bolts (4)



**B**  
Wing nuts (4)

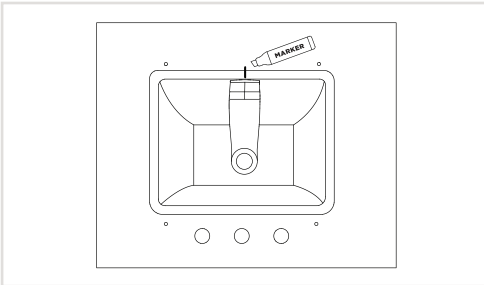


**C**  
Washers (4)



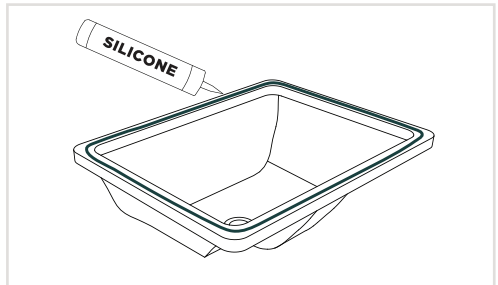
**D**  
Undermount clips (4)

### INSTALLATION



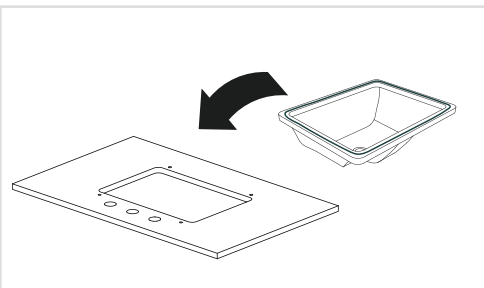
#### STEP 1 - PLACE & TRACE

Place the sink basin on the bottom of the countertop, making sure to center over the opening. Draw guide lines on the countertop and the basin in two locations.



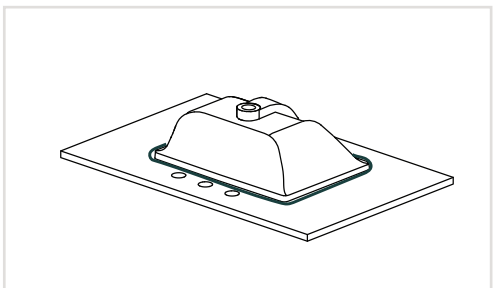
#### STEP 2 - PREPARE SINK BASIN

Using a caulk gun, apply a heavy amount of silicone of your choice on the top side of the sink basin edge.



#### STEP 3 - FLIP & SET IN PLACE

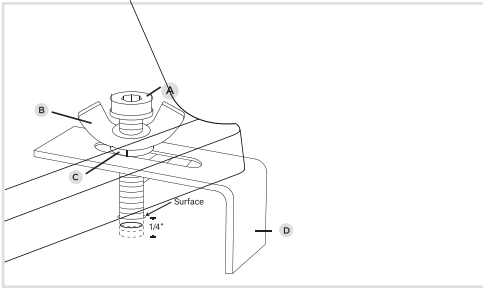
Carefully flip the sink basin over and place it so the guide lines match up in both locations.



#### STEP 4 - DRY & SET

Press down on the sink basin to seal the silicone. Remove any excess. Follow dry time recommendation found on your product, typically 12 to 24 hours.

## INSTALLATION GUIDE - RECTANGULAR SINK

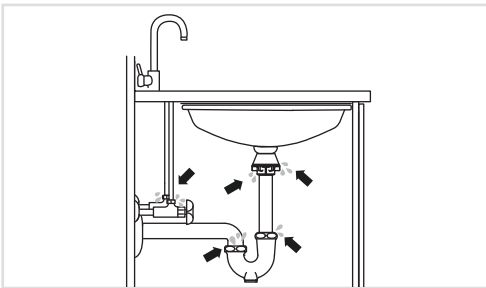


### STEP 5 - ATTACH UNDERMOUNT CLIPS

Please tighten Bolt (A) into wing nut (B) slide on washer (C) and guide through Under-mount clip (D) opening into threaded bolt hole in the countertop. ONLY-Hand Tighten Bolt (A) to a depth of about 1/4" below countertop surface. Then secure the Sink with the under-mount clip (D) by Tightening wing nut (B) only



**STEP 6:** Check the sink beneath the cabinet in an undermount configuration.



**STEP 7:** Inspect connections for leaks while running water into the sink.