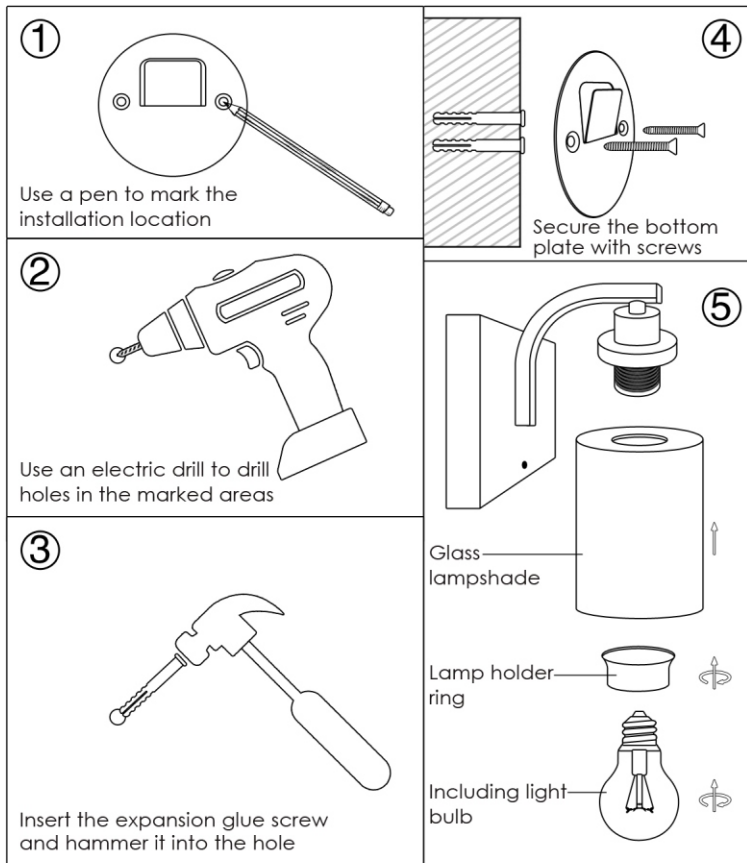
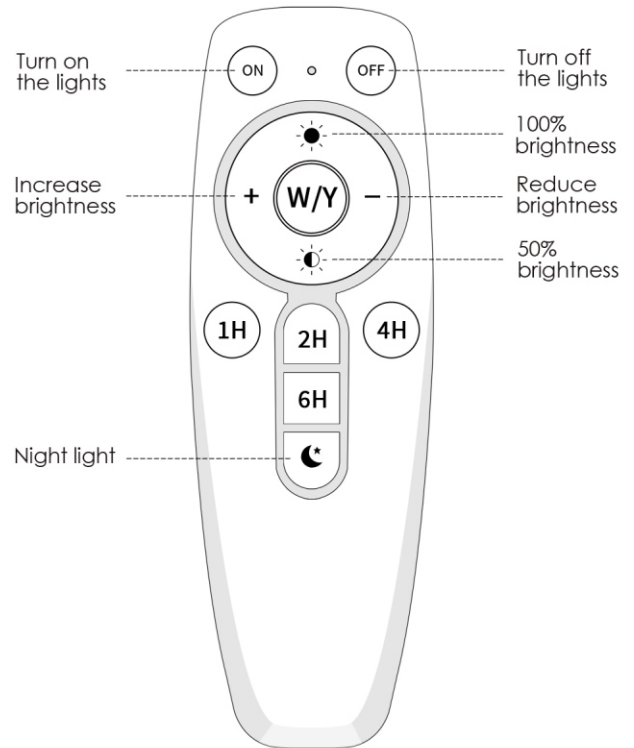


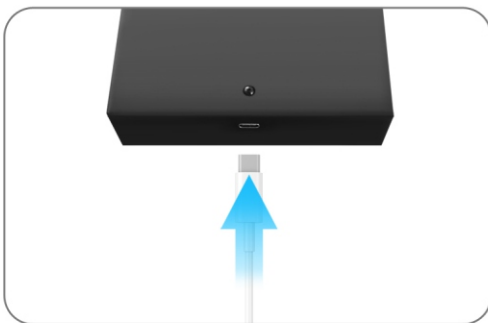
01.Installion



02.Remote Control



03.Wiring Charging



04.Charging Indicator Light



Red light: Charging



Green light: Charging completed

05.Precautions:

1. Please fully charge before first use. When the battery is exhausted, it takes about 6 hours to fully charge, which is fast and safe. The red indicator light is on while charging, and the green indicator light is on when it is fully charged, providing precise charging guidance.
2. The touch button on the rechargeable wall sconce base has priority control. If you want to use the remote control to operate the wall sconce, please use the touch button to turn on the wall sconce first; if the touch button turns off the wall sconce, the remote control function will be unavailable.
3. Due to different monitors, product photos may have some color differences compared to the actual product. Additionally, the product size may have a 1-2 cm error due to manual measurement.
4. When using the remote control to control the rechargeable glass wall lamp, please aim the remote control at the infrared receiver under the base of the wall lamp. The sensitive remote control distance is 3-5 meters, which is simple and fast.
5. If the product has quality problems such as broken glass, bent lamp arm, deformed lamp body, etc., or missing parts such as missing remote control, missing parts package, or missing bulb, etc., or other problems, please don't hesitate to contact us. We will provide a satisfactory solution.