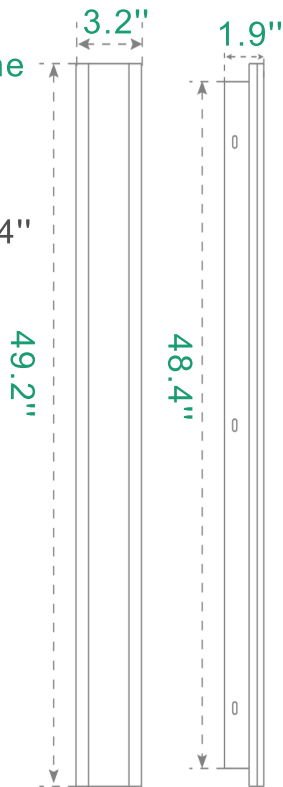


Product parameters

Seven sizes, such as the picture on the right shows the 49.2" specifications.

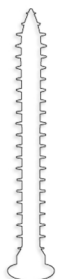
Product name: Black LED wall lamp
Size: L7.9"/L11.8"/L23.6"/L31.5"/L39.4"/L45.3"/49.2"
Power: 10W/12W/20W/25W/32W/40W/45W
Width: 3.2 in
Thickness: 1.9 in
Lumens: 600-4000lm
Voltage: 110V
Waterproof level: up to IP65
Light Source: IP65 Waterproof LED
Lamp body: iron and aluminum
Side: Heat Resistant Acrylic
Color temperature: 3000K
Color: Black
CRI: 90+



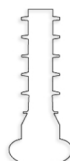
Package



[A]



[B]



[C]



[D]

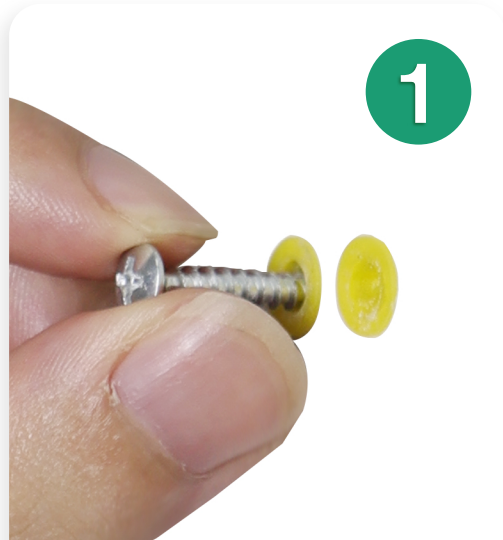
[G]



[E]

[1].Heat-shrinkable tube tin ring "G" inside the wire connection is not with the wire skin
 [2]. tin ring "G" outside the part must be with wire skin.
 [3].Ensure the sealing of the wire connection, can effectively waterproof

Installation steps



1

Punch a hole with screw set "A"



2

Use screw "B" to mount the wall plate "E" on the wall



Heat-shrinkable tube "D" will be connected to the lamp line and household electrical wiring



Heat the heat shrink tube with a heatgun or lighter.



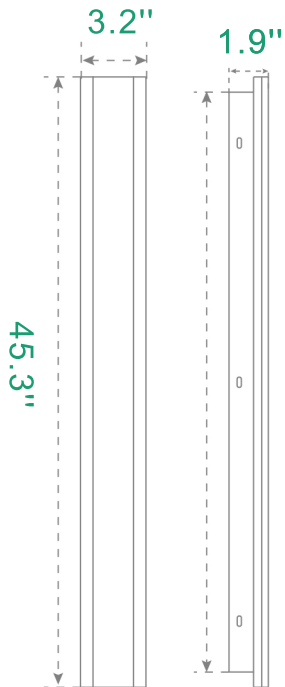
[F]

Installed with screws "C" in the "F" hole on the side of the lamp body

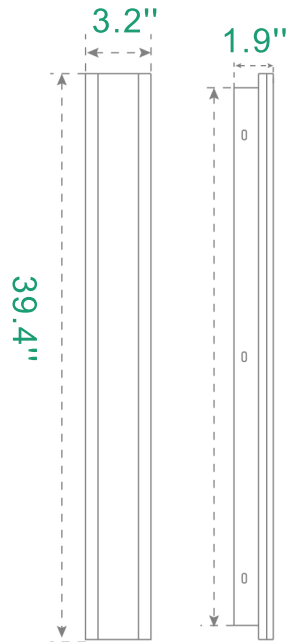


Installation is complete

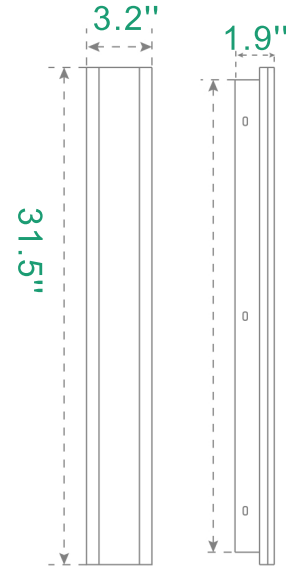
Product Size



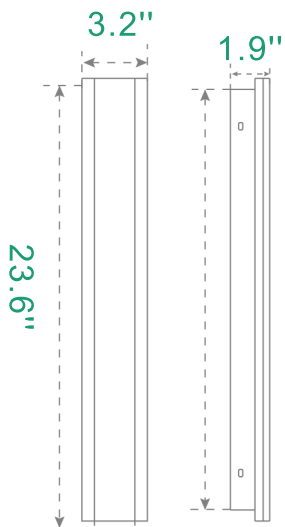
Size: L45.3"
Wattage: 40W



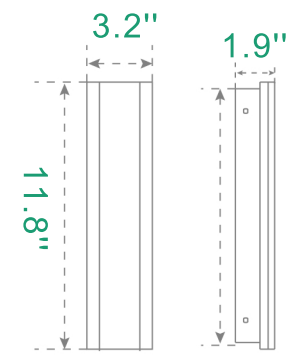
Size: L39.4"
Wattage: 32W



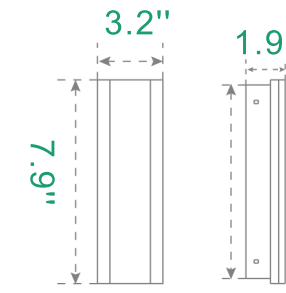
Size: L31.5"
Wattage: 25W



Size: L23.6"
Wattage: 20W



Size: L11.8"
Wattage: 12W



Size: L7.9"
Wattage: 10W



IP65

3000K