

LOCATION		DATE
PREPARED BY		QUANTITY
COMMENTS		FIXTURE TYPE
CATALOG NUMBER		

LED Vanity

Features

Decorative cut wall mount vanity features an edge-lit panel construction. Fixture can be vertically or horizontally mounted on a wall or on a ceiling. For indoor use only.

Construction

Back plate is die-formed of 22-gauge steel. Standard mounting holes and hardware are included. Power supply connections must be made inside a junction box (not included).

Finish

Satin Nickel or White metal finish.

Diffuser

White acrylic.

Electrical

Input 120VAC / 60Hz
Not compatible with dimmers.

LED

Integrated LED modules capable of producing:
27W = 2000 source lumens
33W = 3000 source lumens
3000K (CCT). Rated for 50,000 hours, 90 CRI.

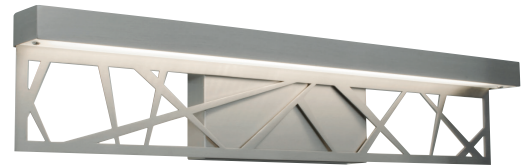
Certification

All fixtures are cETLus listed for damp locations.
ADA

Warranty

Limited warranty: This fixture is free from defects in materials and workmanship for a period of 5 years from date-of-purchase.

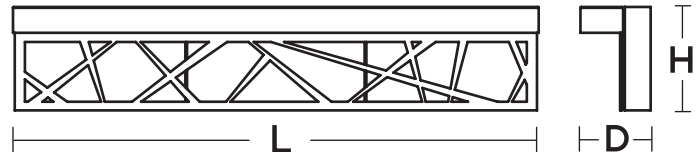
Specifications and dimensions
subject to change without notice.



Satin Nickel



White



Ordering Information:

Satin Nickel	White	LED	Source Lumens	CCT	L	H	D
		27W	2000	3000K	24"	5"	3-1/4"
		33W	3000	3000K	36"	5"	3-1/4"