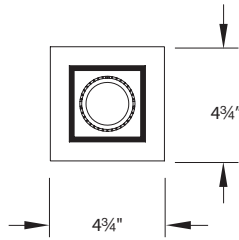
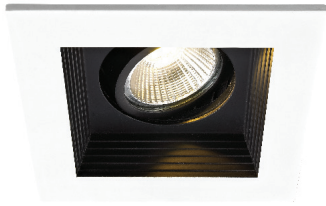


MT-3LD111 - 1 Light

Mini LED Multiple Spots

WAC LIGHTING
Responsible Lighting®



Fixture Type:

Catalog Number:

Project:

Location:

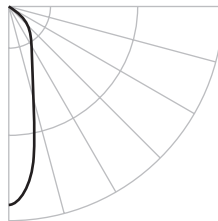
PRODUCT DESCRIPTION

Integral housing adjustable recessed spot light.

FEATURES

- Energy Star® rated
- Title 24 California Energy Commission Compliant (90 CRI versions)
- Individually adjustable luminaires
- Complete unit includes housing & trim
- All housings are Non-IC rated
- 30° visual cutoff for glare control
- 25° vertical tilt. 350° horizontal rotation.

PHOTOMETRY



Beam Angle: 25°

SPECIFICATIONS

Construction: Die-cast aluminum heat sink painted black. Trim, housing and junction box are 20 gauge steel. Frame and hanger bars are heavy gauge galvanized steel.

J-Box (New Construction): Seven knockouts and four Romex® style wiring connectors provided for ease of installation. Rated for branch wiring.

Driver: 120V Input

Light Source: High output LED (included with housing)

Dimming: Dim to 10% with electronic low voltage (ELV) dimmer.

Mounting: Supplied with hanger bars, adjustable from 14½"-25" to accommodate various joist construction and grid sizes. Hanger bars include a captive mounting "screw-nail" for ease of installation. Accommodates surface up to 1" thick. 4½" x 4½" cutout.

Finish: Abrasion resistant powder coat paint in Black (BK).

Standards: ETL & cETL listed.

FIXTURE PERFORMANCE

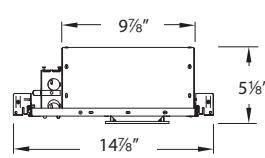
Model	Type	Color Temp	Watts	Lumens	Efficacy	CRI
MT-3LD111NA-F30	New Construction	3000K	11W	755	69 Lm/W	85
MT-3LD111R-F30	Remodel					
MT-3LD111NA-F930	New Construction	3000K	11W	670	59 Lm/W	90
MT-3LD111R-F930	Remodel					

ORDER NUMBER

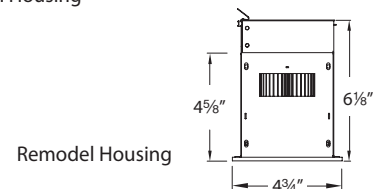
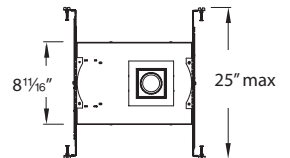
Model#	CRI	Installation	Finish	Trim/Reflector
MT-3LD111NA-F30	85	New Construction (Airtight)	BK WT	White/Black White/White
MT-3LD111NA-F930	90	New Construction (Airtight)		
MT-3LD111R-F30	85	Remodel		
MT-3LD111R-F930	90	Remodel		



Example: MT-3LD111R-F30-BK



New Construction Housing



Remodel Housing

WAC Lighting
www.waclighting.com
Phone (800) 526.2588 • Fax (800) 526.2585

Headquarters/Eastern Distribution Center
44 Harbor Park Drive • Port Washington, NY 11050
Phone (516) 515.5000 • Fax (516) 515.5050

Western Distribution Center
1750 Archibald Avenue • Ontario, CA 91760
Phone (800) 526.2588 • Fax (800) 526.2585