

Smart towel rack installation and operation instructions

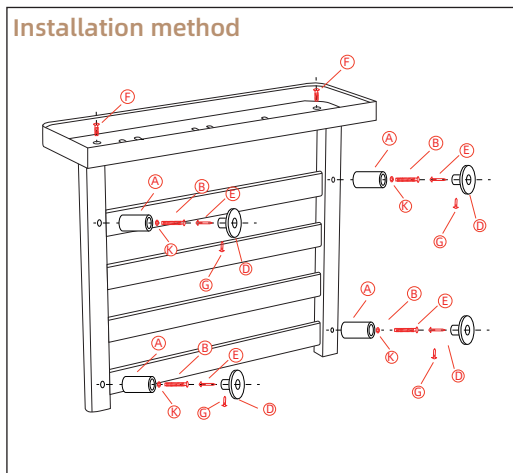
Applicable models

G50



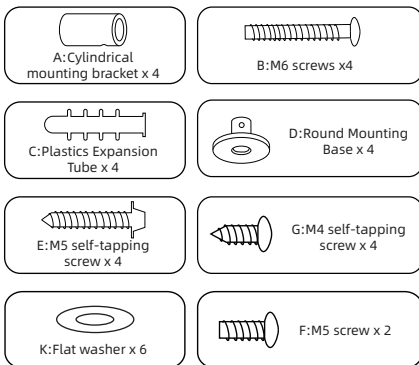
Installation Diagram

Installation method

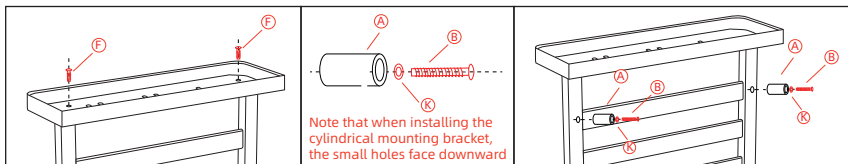


Installation parts

Your package contains:

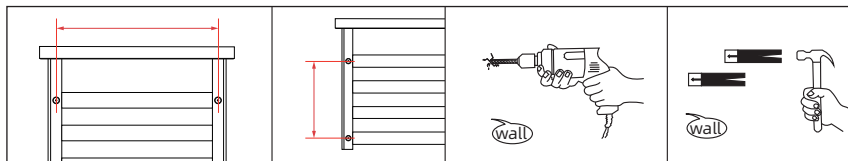


Drilling installation method



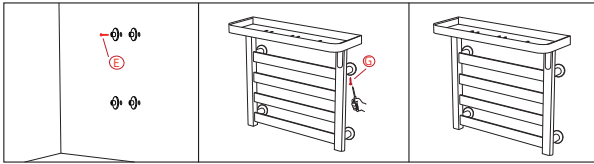
Step one:

1. Use screws [F] to fix the storage rack to the electric towel rack
(Please use a manual screwdriver when installing, an electric screwdriver will easily cause stripped screws);
2. Secure the cylindrical mounting bracket [A] to the back of the unit with screws [B] through flat washers [K];



Step two:

1. Measure the position of the drilled holes (Measured properly both horizontally and vertically from each of the center points of the mounting brackets) and mark the location on the wall;
2. Drill 8mm holes at each marked point in the wall;
3. Drive the plastic expansion tube [C] into the wall with a hammer;



Step three:

1. Fix the round mounting base [A] to the wall with M6 self-tapping screws [E];
2. Place the body of the heated towel rack over the round mounting base [D];
3. Secure and fasten the towel rack body to the round mounting base [D] with M4 self-tapping screws [G];
4. Turn on the power, the installation is completed.