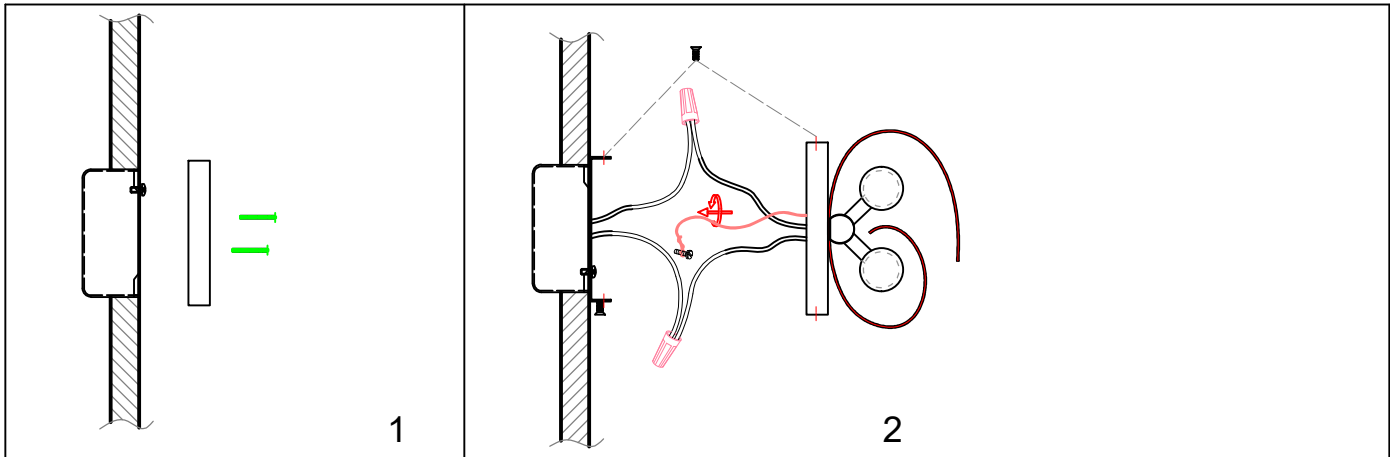
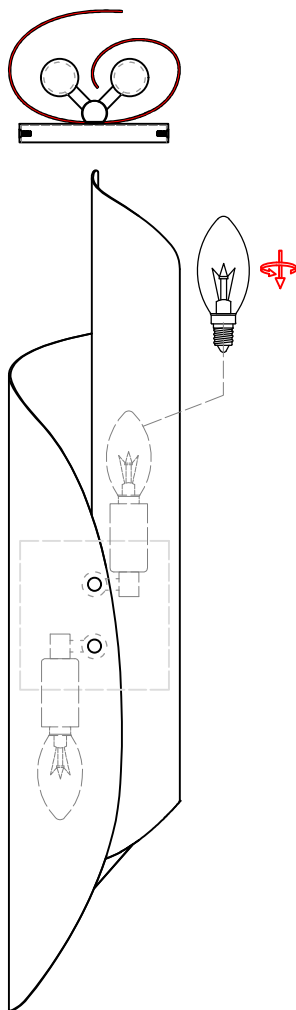


## ASSEMBLY INSTRUCTIONS



REF/SKU :SC56  
Lampholder: 2\*E12 40W



### Installation Program

1. Fix the hanging board on the junction box with mounting screws.
2. Connect the wires and fix the lamp body on the hanging plate with screws.
3. Screw the light source onto the lamp head
4. Turn on the power and try to light up.

### ATTENTIONS



1. Do not disassemble this products
2. Do not strike or shake strongly
3. Do not wipe with ethyl alcohol, gasoline or paint thinners etc.

#### Assembling Attentions:

1. Components should be on desk, without any defect or out of shape.
2. The bearing of mounting plate should be enough for the lamp, expansion screw is needed for big chandeliers.
3. Once wight of chandelier is over 3kg, it should be fix with Embedded chain hoist to make sure not pressure to wire
4. Incandescent light bulb can not be installed to combustible hook directly, can not cling to fabric shade, power can not higher than maximum marked on lamp.

Call : 1-770-416-8188

<https://ella-home.com>