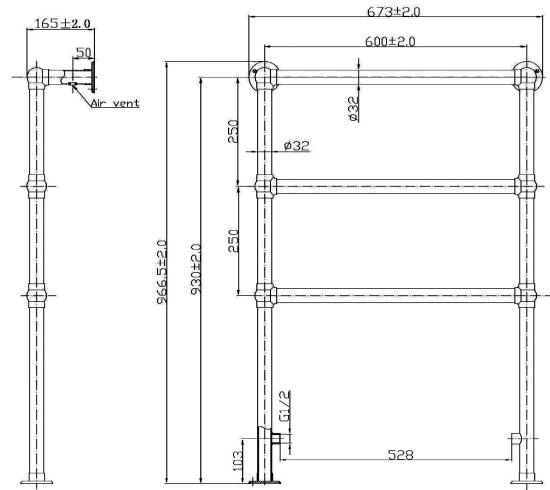


CUSTOMER DATA SHEET - HEATING

SALES CODE: HT301

DESCRIPTION: Countess Heated Towel Rail 966X676mm



PRODUCT DIMENSIONS

Height (mm)	Width (mm)	Depth (mm)	Length (mm)	Nett Wgt Kg
966	676	165		8.07

PACKAGING DIMENSIONS

Height (mm)	Width (mm)	Length (mm)	Gross Wgt Kg
715	294	1025	8.07

PACKAGING DATA

Box Colour	White Cardboard Shrinkwrapped		
Box Qty	1	Label Colour	White Label
Label Size	100 x 50	Label Qty	2

OUTER BOX DIMENSIONS (If Applicable)

Height (mm)	Width (mm)	Length (mm)	Gross Wgt Kg
Barcode	5055146123583		

PRODUCT DETAILS

Contry of Origin	China					
Fitting Instruction	Yes					
RAL No	N/A					
Heat Element Wattage	Not Applicable					
BTU Outputs	30°C	287	50°C	546	60°C	691
Pipe Centres	509mm					
Packaging Volume (L)	124					
Wall to Ctr of Tappings	145					
Dual Fuel	N/A					

Certification	CE	No	RoHS	N/A	WEEE	N/A
Colour/Finish	Chrome					
Product Material	Steel					
Heat Element Wattage Compatible	N/A					
Thermal Outputs (Watts)	30°C	84	50°C	160	60°C	200
Max Projection	160mm					
Tube Diameter	32mm					
Floor to Ctr of Tappings	100					