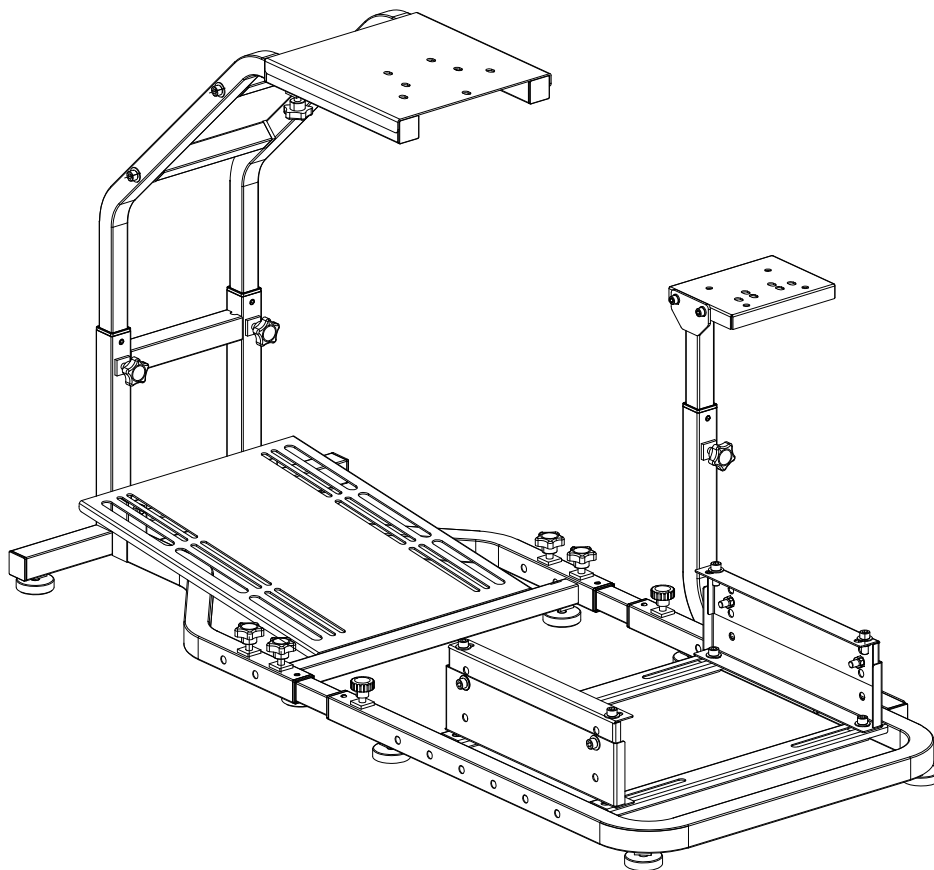
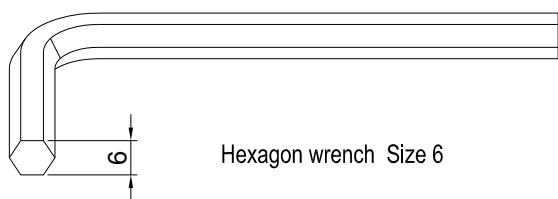


GS24

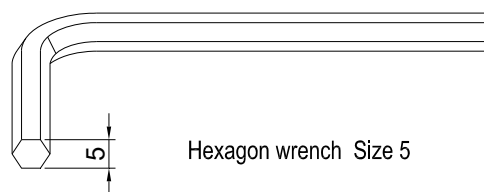
Product Assembly Manual



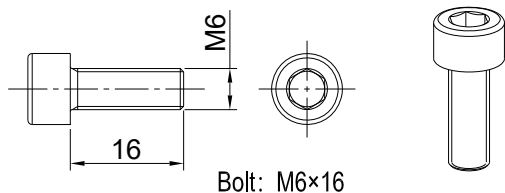
accessories explanation



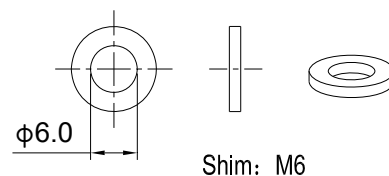
Hexagon wrench Size 6



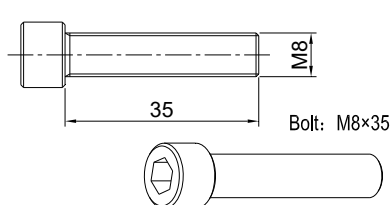
Hexagon wrench Size 5



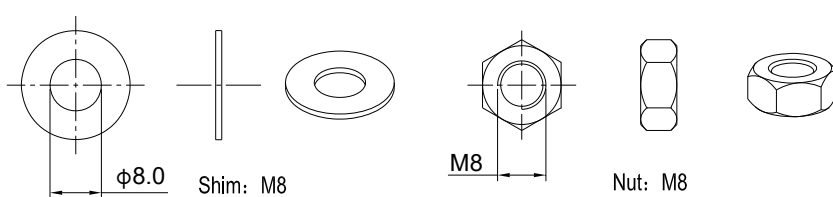
Bolt: M6x16



Shim: M6

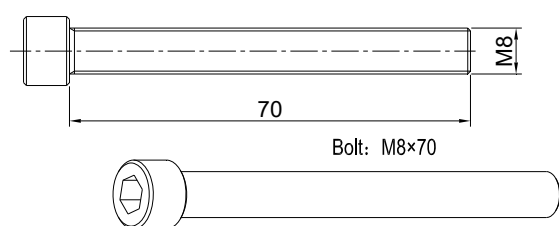


Bolt: M8x35

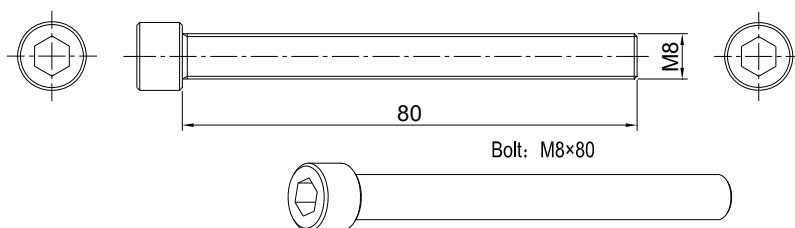


Shim: M8

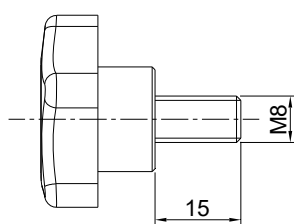
Nut: M8



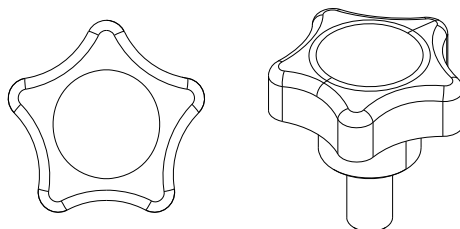
Bolt: M8x70



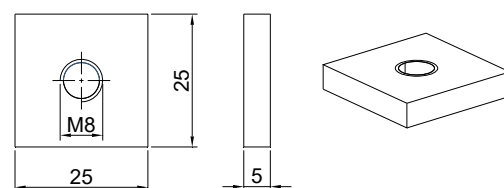
Bolt: M8x80



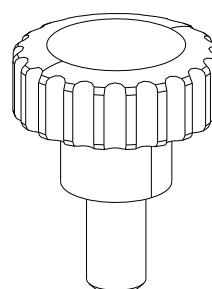
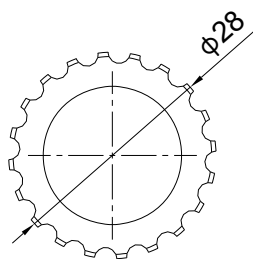
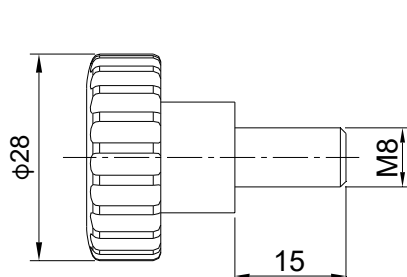
Handle Bolt: M8x15



Small Handle Bolt: M8x15

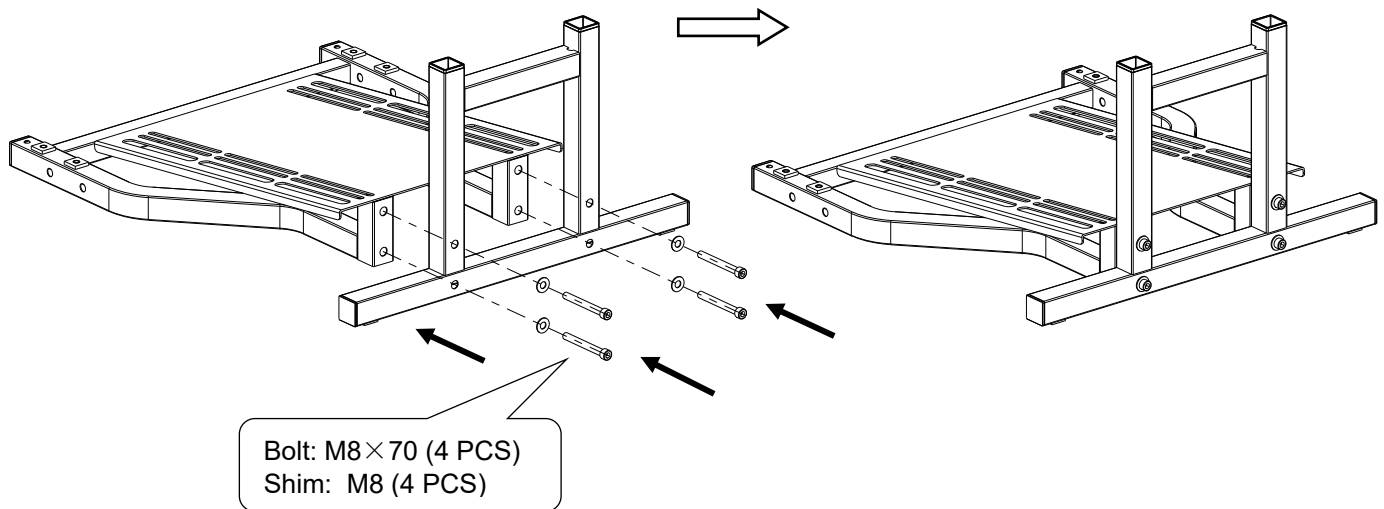


Square Nut: M8 x25x25x5

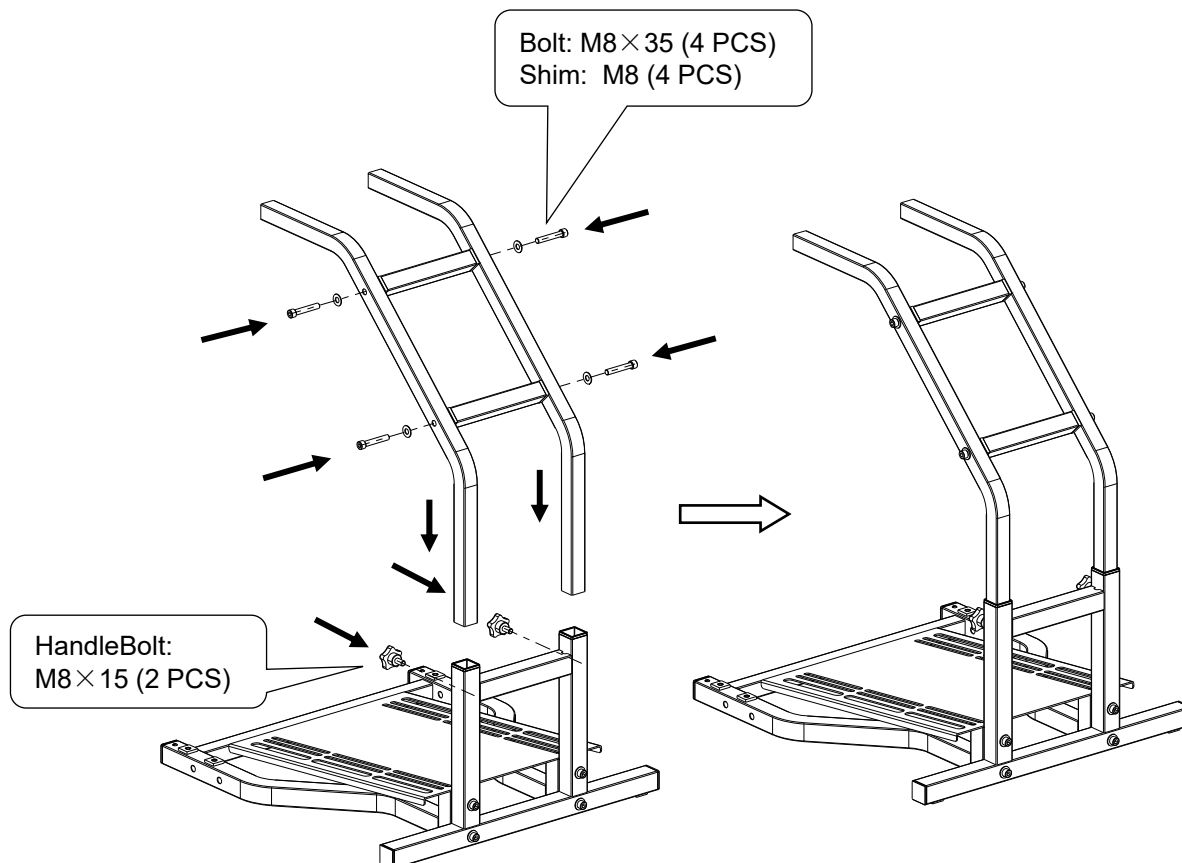


Assembly Processes

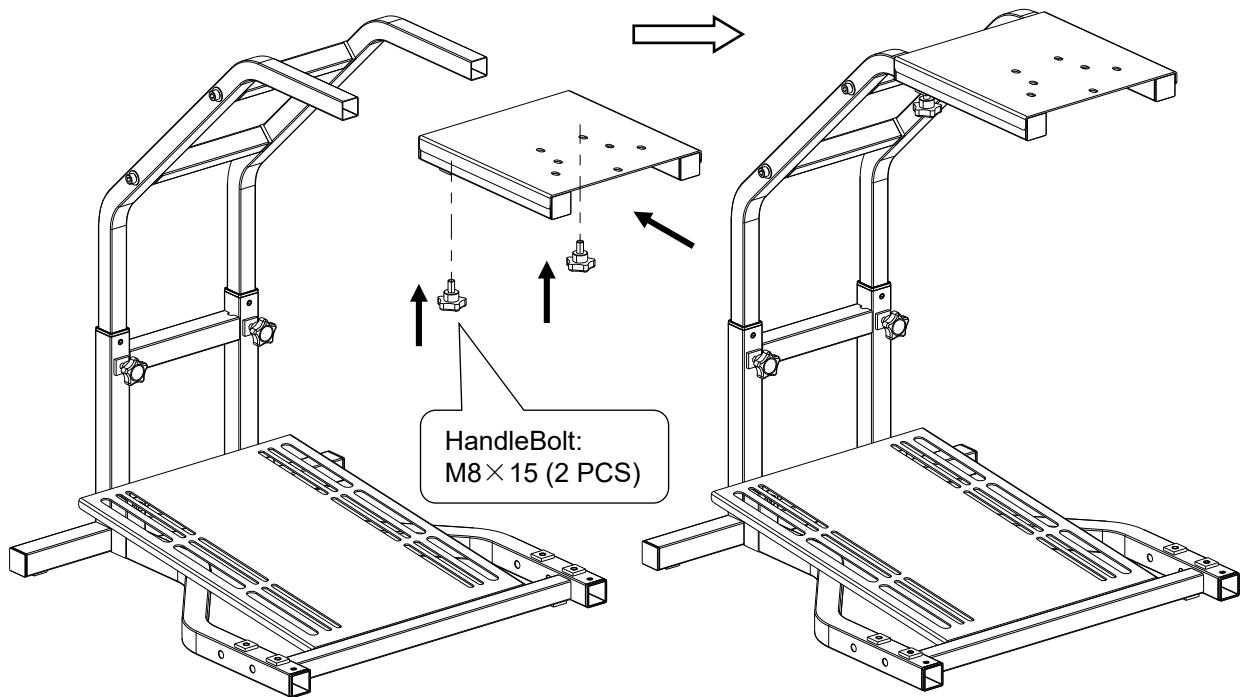
1. Assemble the base stand with 4 pieces of the bolt(M8×70) and 4 pieces of the shim (M8)



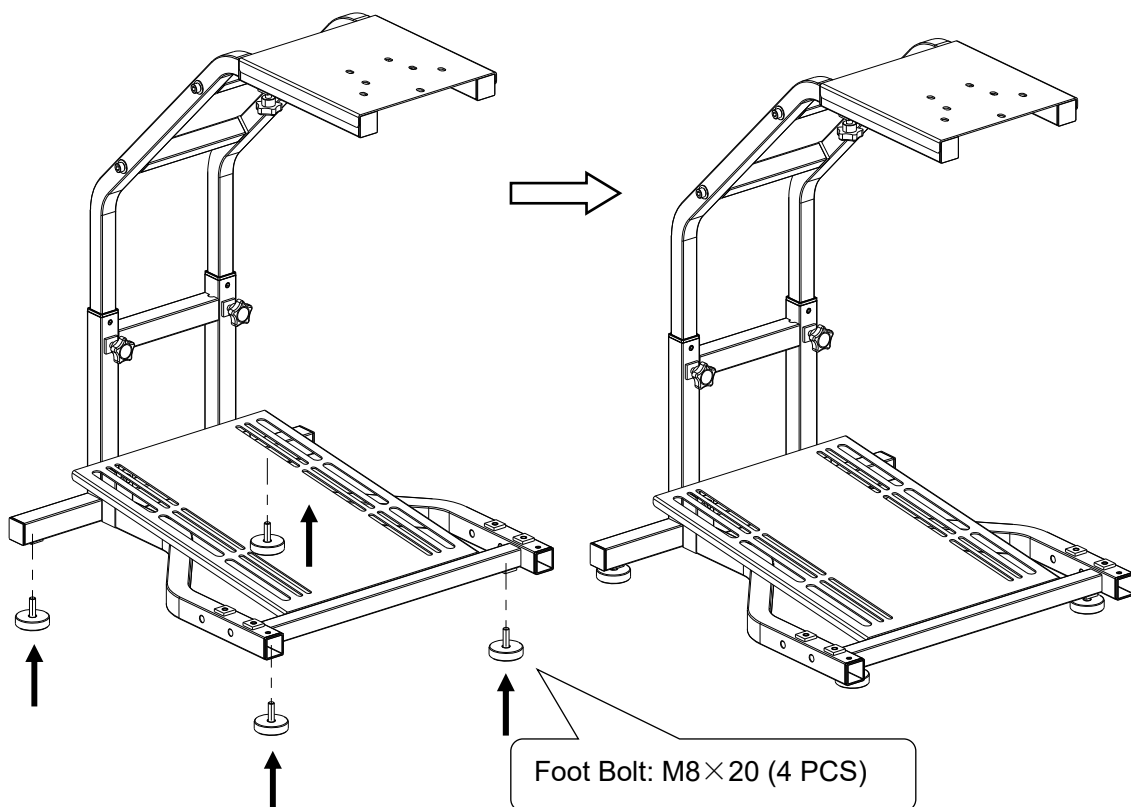
2. Assembling adjustment stand with 4 pieces of the bolt(M8×35) 、 4 pieces of the shim (M8) and 2 pieces of the Handle Bolt (M8×15)



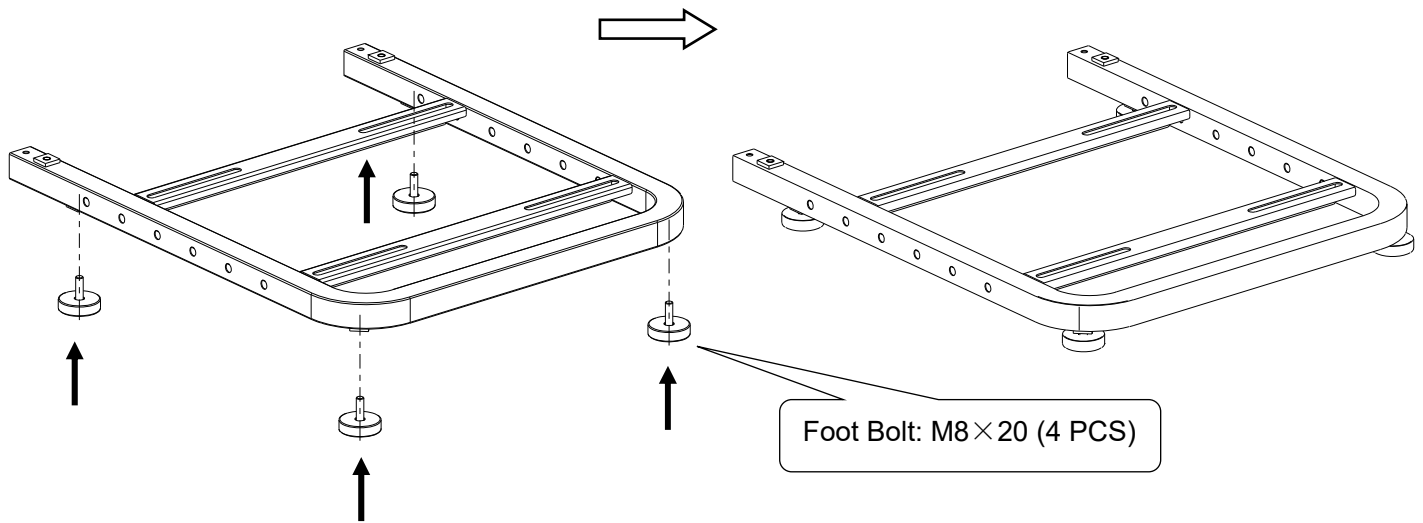
3. Assemble the steering wheel mounting stand with 2 pieces of the Handle Bolt (M8 × 15)



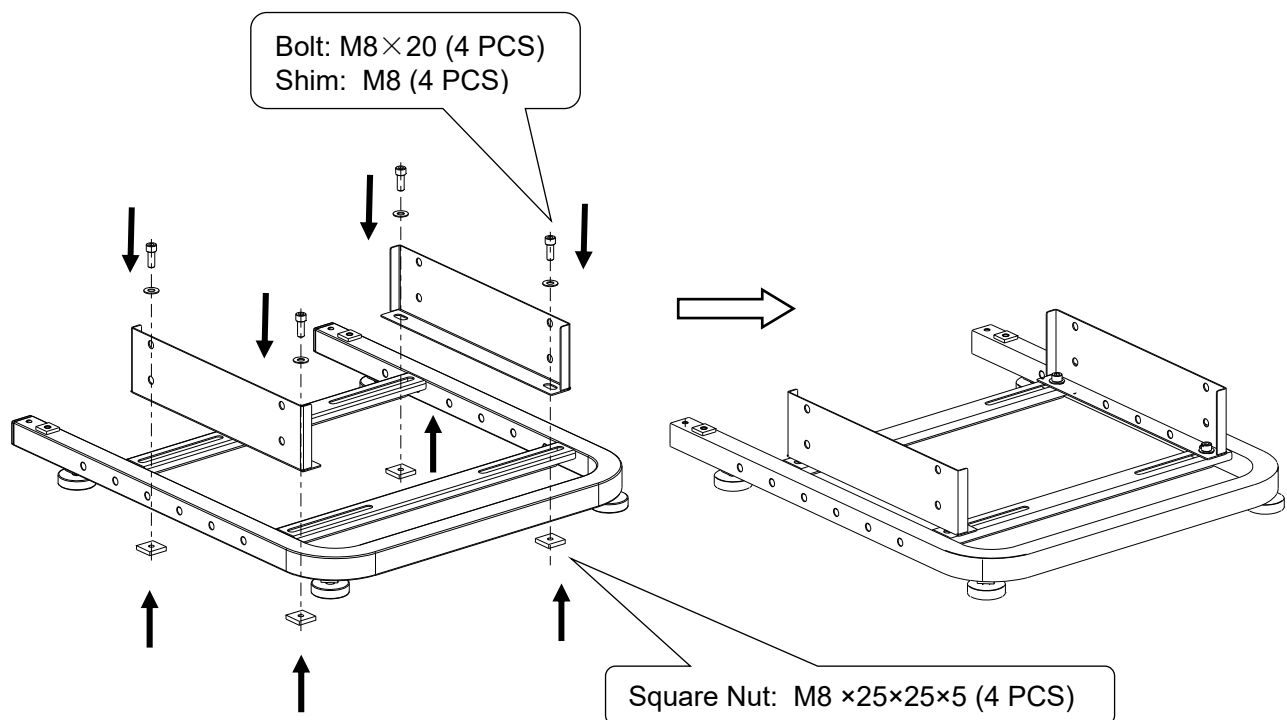
4. Assemble the anti-skid foot bolt (4 pcs) to the frontpart stand.



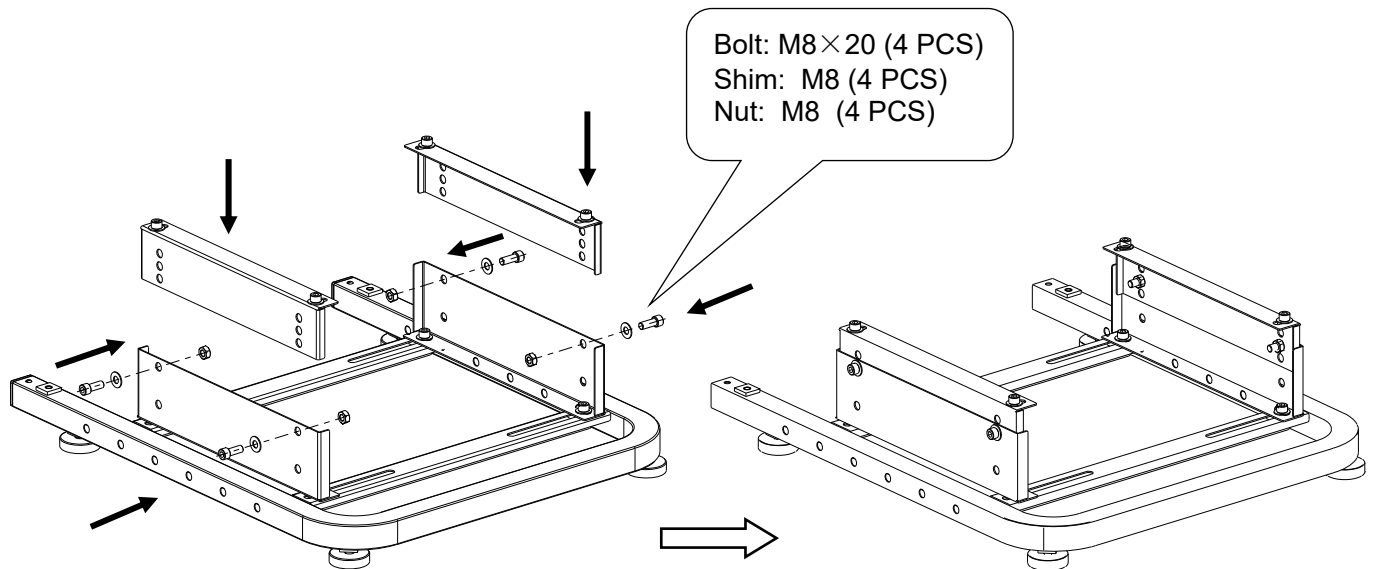
5. Assemble the anti-skid foot bolt(4 pcs) to the afterpart stand



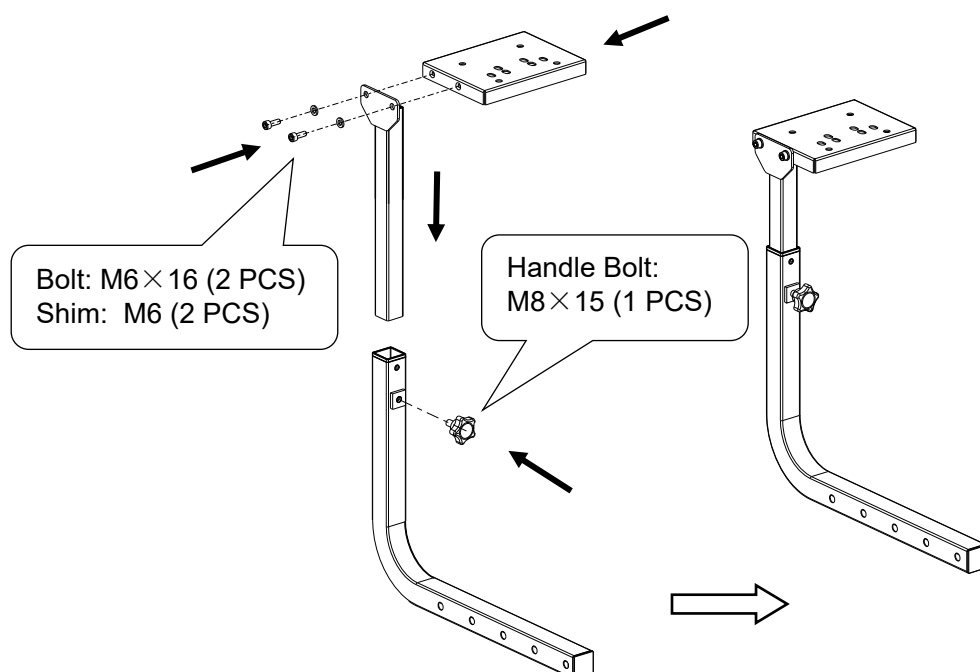
6. Assemble the seat mounting stand with 4 pieces of the bolt (M8×20) 、 4 pieces of the shim (M8) and 4 pieces of the Square Nut (M8 ×25×25×5)



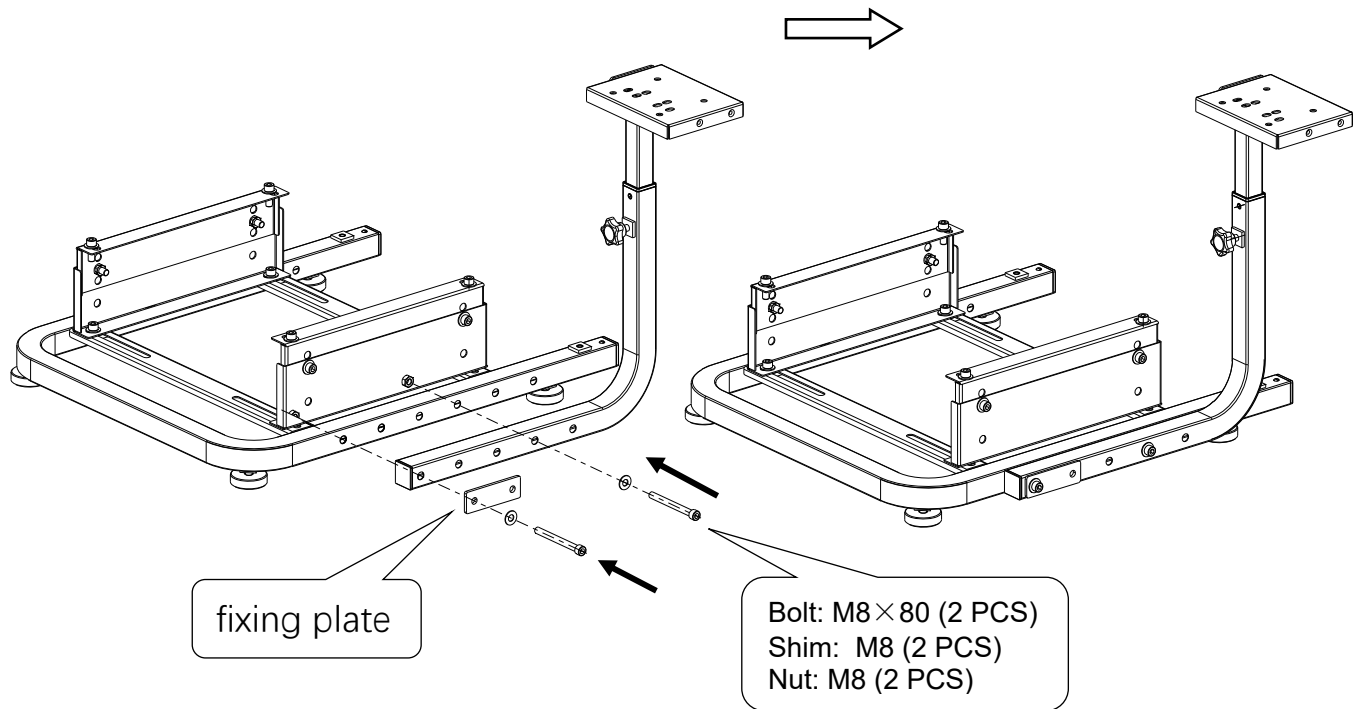
7. Assemble the seat adjustment stand with 4 pieces of the bolt (M8×20) 、 4 pieces of the shim (M8) and 4 pieces of the nut (M8)



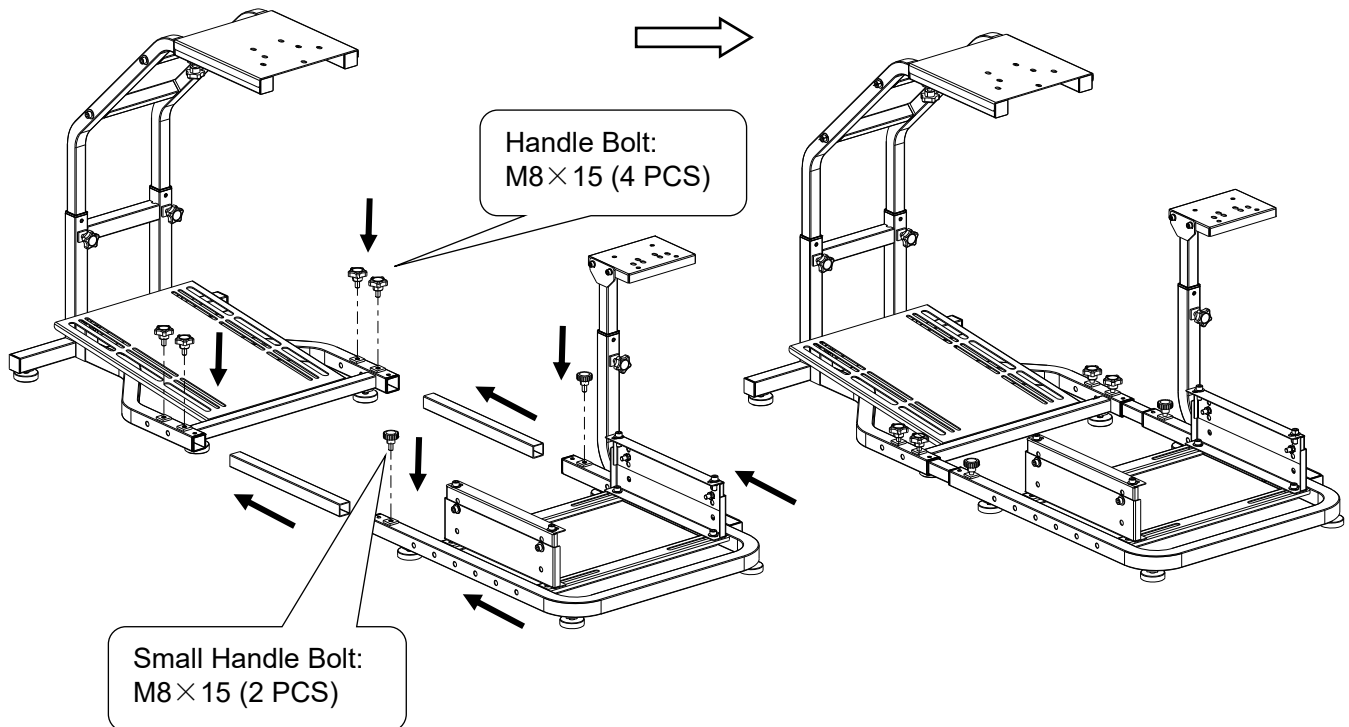
8. Assemble the gear mounting stand with 2 pieces of the bolt (M6×16)、 2 pieces of the shim (M6) and 1 pieces of the Handle Bolt (M8×15)



- 9 Assemble the elbow fixing stand and fixing plate on the left or right as your like to the Seat stand with 2 pieces of the bolt (M8×80) 、 2 pieces of the shim (M8) and 2 pieces of the nut (M8)



- 10 Connect the frontpart stand with 4 pieces of the Handle Bolt (M8×15) and 2 pieces of the small Handle Bolt (M8×15)



ASSEMBLY INSTRUCTION

SPARE PARTS:



STEPS:

STEP 1



Screw out all

A+B

STEP 2



STEP 3



STEP 4



STEP 5



STEP 6



STEP 7



STEP 8



STEP 9



STEP 10



FINISH

