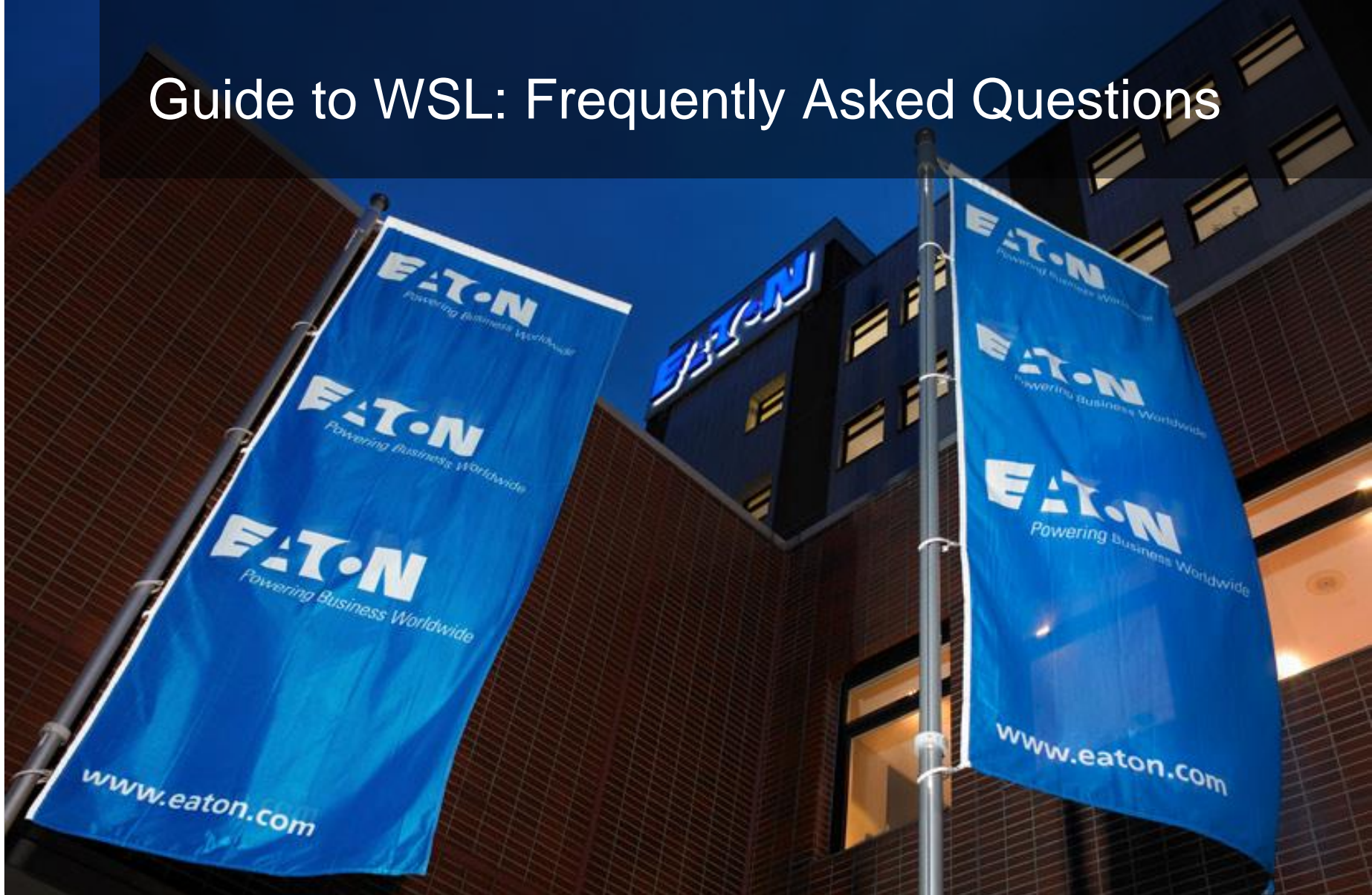
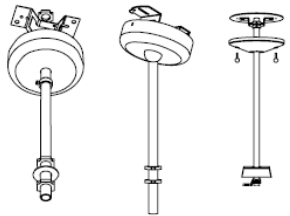
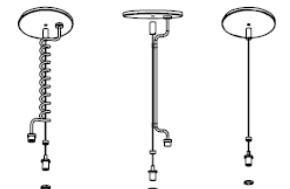


Guide to WSL: Frequently Asked Questions



Powering Business Worldwide

Adjustable Cable (CCA) and Fixed Cable Kits/(CCF)

Suspension Sets	Designation		Ordering Information						
<p>Stem Sets</p>  <p>SCF SCS SCA</p>	<p>SCF-XX-B</p>	<p>Fixed Stem Set</p>	<table border="1"> <tr> <td data-bbox="1188 357 1381 435">CCF</td> <td data-bbox="1381 357 1574 435">18</td> <td data-bbox="1574 357 1883 435">NPF</td> </tr> <tr> <td data-bbox="1188 435 1381 578"> <p>Type of Kit CCA=Adjustable Cable Kit CCF=Fixed Length Cable Kit</p> </td> <td data-bbox="1381 435 1574 749"> <p>Length of Cable <u>Fixed Length</u> 12=12" long 15=15" long 18=18" long 21=21" long 24=24" long 27=27" long 48=48" long <u>Adjustable</u> 120=120" long 48=48" long</p> </td> <td data-bbox="1574 435 1883 556"> <p>Configuration NPF=Non Power Feed PFS=Straight Cord Power PFC=Curly Cord Power Feed</p> </td> </tr> </table>	CCF	18	NPF	<p>Type of Kit CCA=Adjustable Cable Kit CCF=Fixed Length Cable Kit</p>	<p>Length of Cable <u>Fixed Length</u> 12=12" long 15=15" long 18=18" long 21=21" long 24=24" long 27=27" long 48=48" long <u>Adjustable</u> 120=120" long 48=48" long</p>	<p>Configuration NPF=Non Power Feed PFS=Straight Cord Power PFC=Curly Cord Power Feed</p>
CCF	18	NPF							
<p>Type of Kit CCA=Adjustable Cable Kit CCF=Fixed Length Cable Kit</p>	<p>Length of Cable <u>Fixed Length</u> 12=12" long 15=15" long 18=18" long 21=21" long 24=24" long 27=27" long 48=48" long <u>Adjustable</u> 120=120" long 48=48" long</p>	<p>Configuration NPF=Non Power Feed PFS=Straight Cord Power PFC=Curly Cord Power Feed</p>							
<p>SCS-XX-B (Deep Canopy, 3/8" stem, 5/8" Outside Diameter)</p> <p>XX=Length 6", 8", 12", 24", 36", 48", 60", 72"</p>	<p>Swivel Stem Set</p>								
<p>SCA-48-B</p>	<p>Field cutable Stem Set (1/4" IPS Stem, 1/2" O.D.)</p>								
<p>Used with all surface fixtures as stem sets. SCS stems have forty-five degree (45°) swivel, one direction. One set consists of one (1) stem assembly. Minimum of two (2) sets required per fixture. NOTE: Coupler, three-eighths inch (3/8") IPS Pipe Coupler to join lengths. Coupler is standard baked white enamel or special order of black.</p>									
<p>Cable Sets</p>  <p>CCA PFC CCA PFS/PFSDIM CCA NPF</p>	<p>CCA-XX-PFC-U</p>	<p>CCA=Adjustable Cable (XX=48" or 120")</p>							
<p>CCA-XX-PFS-U</p>	<p>CCF=Fixed Cable (XX=12", 15", 18", 21", 24", or 27")</p>								
<p>CCA-XX-NPF-U</p>	<p>PFC=Power Feed, Coil Power Cord</p>								
<p>CCA-PFSDIM-U</p>	<p>PFS=Power Feed, Straight Power Cord</p>								
<p>CCF-XX-PFC-U</p>	<p>NPF=Non-Power Feed</p>								
<p>CCF-XX-PFS-U</p>	<p>PFSDIM=Power Feed, Straight Power Cord, Dimming</p>								
<p>CCF-XX-NPF-U</p>	<p>NOTE: Coupler, Three-eighths inch (3/8") IPS Pipe Coupler to join lengths. Coupler is standard baked white enamel or special order of black.</p>								

Cable Kit Accessories: Examples

STAND ALONE FIXTURE

POWER FEED
END
i.e. CCA-48-PFS



NON POWER FEED
END (NO DIMMING)
i.e. CCA-48-NPF-U



FOR DIMMING,
UTILIZE POWER
FEED END
i.e. CCA-48-PFS-U



IN ROW INSTALLATION

POWER FEED END
i.e. CCA-48-PFS-U



NON POWER FEED END
(NO DIMMING OR EL)
i.e. CCA-48-NPF-U



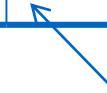
NON POWER FEED END
(NO DIMMING OR EL)
i.e. CCA-48-NPF-U



NON POWER FEED END
(NO DIMMING OR EL)
i.e. CCA-48-NPF-U



ALTERNATE FEED FOR
DIMMING OR EL
i.e. CCA-48-PFS-U



ALTERNATE FEED
FOR DIMMING OR EL
i.e. CCA-48-PFS-U



Powering Business Worldwide

Channel Connector

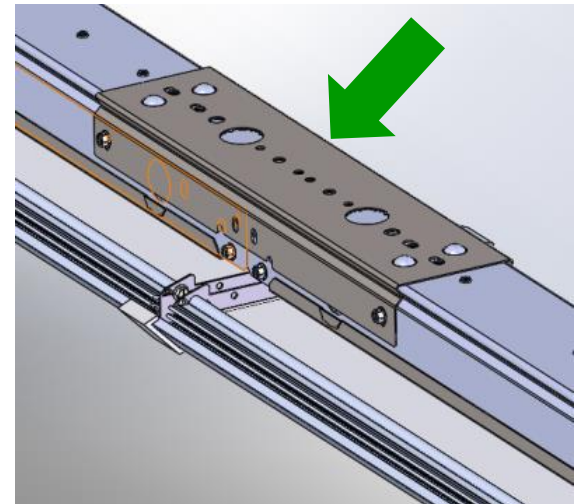
Kit includes (2) two connectors

PN: CLC-WSL-EXT-B=Channel Connector

Using the CLC-WSL-EXT-B eliminates one suspension cable set. Continuous fixture will be suspended from the CLC-WSL-EXT-B by a single cable

For the sensor option, a 1 15/16" clearance is required between fixtures)

*Included in SPC Configuration BOM



Plug-In (PI) Harness

The Plug-In System provides factory installed branch circuit wiring and plug-in connectors for continuous row installation

PI Example

Wire Harness to Driver + Dimming:

4WSL-LD2-40-SPC-UNV-L840-CD1-PI2BLK-WG6PP-PI10V-U

Wire Harness to driver only: (no dimming)

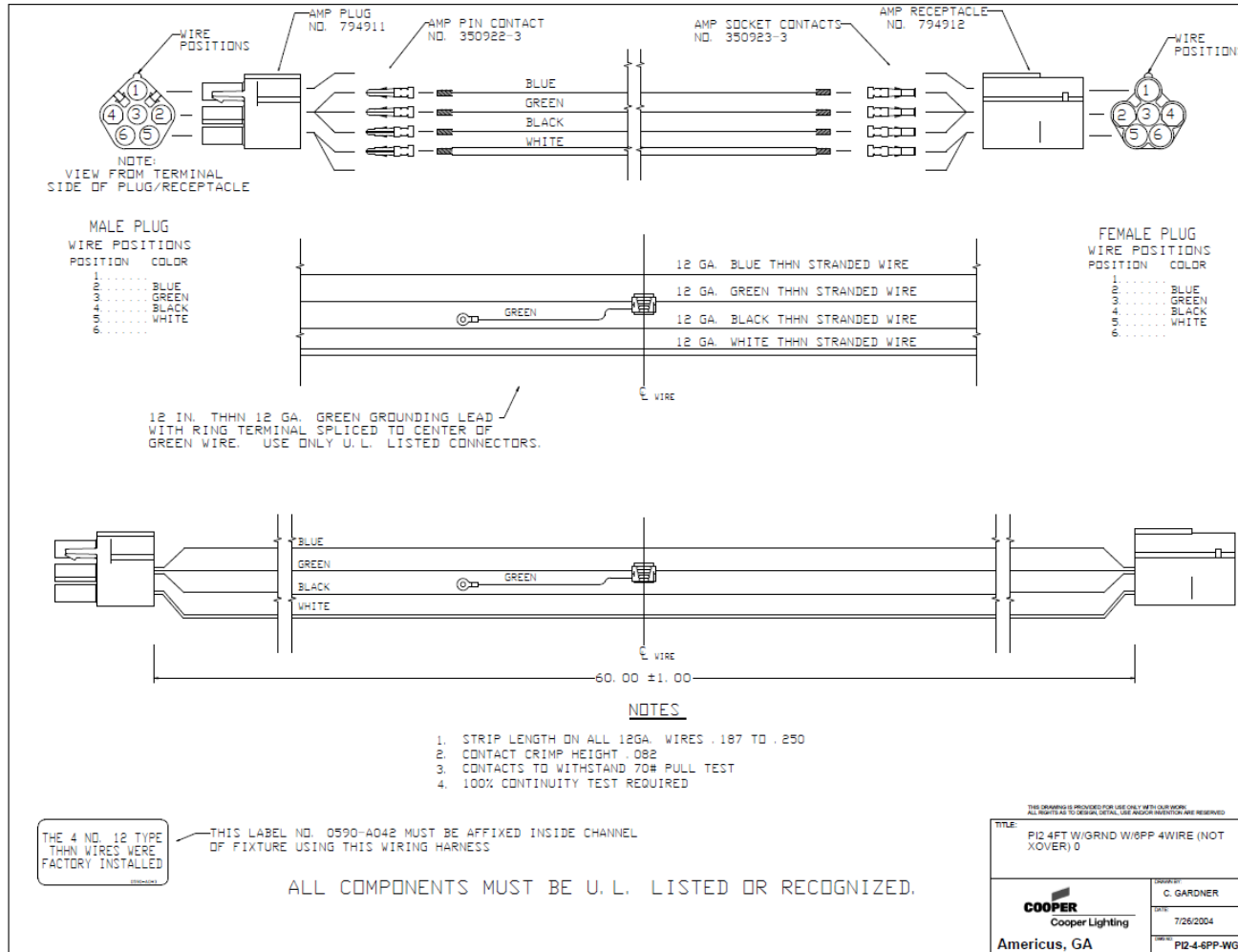
4WSL-LD2-40-SPC-UNV-L840-CD1-PI2BLK-WG6PP-U

PI1BLK-WG6PP A/C driver leads wired to black and white of harness.
Ground lead fastened to channel.

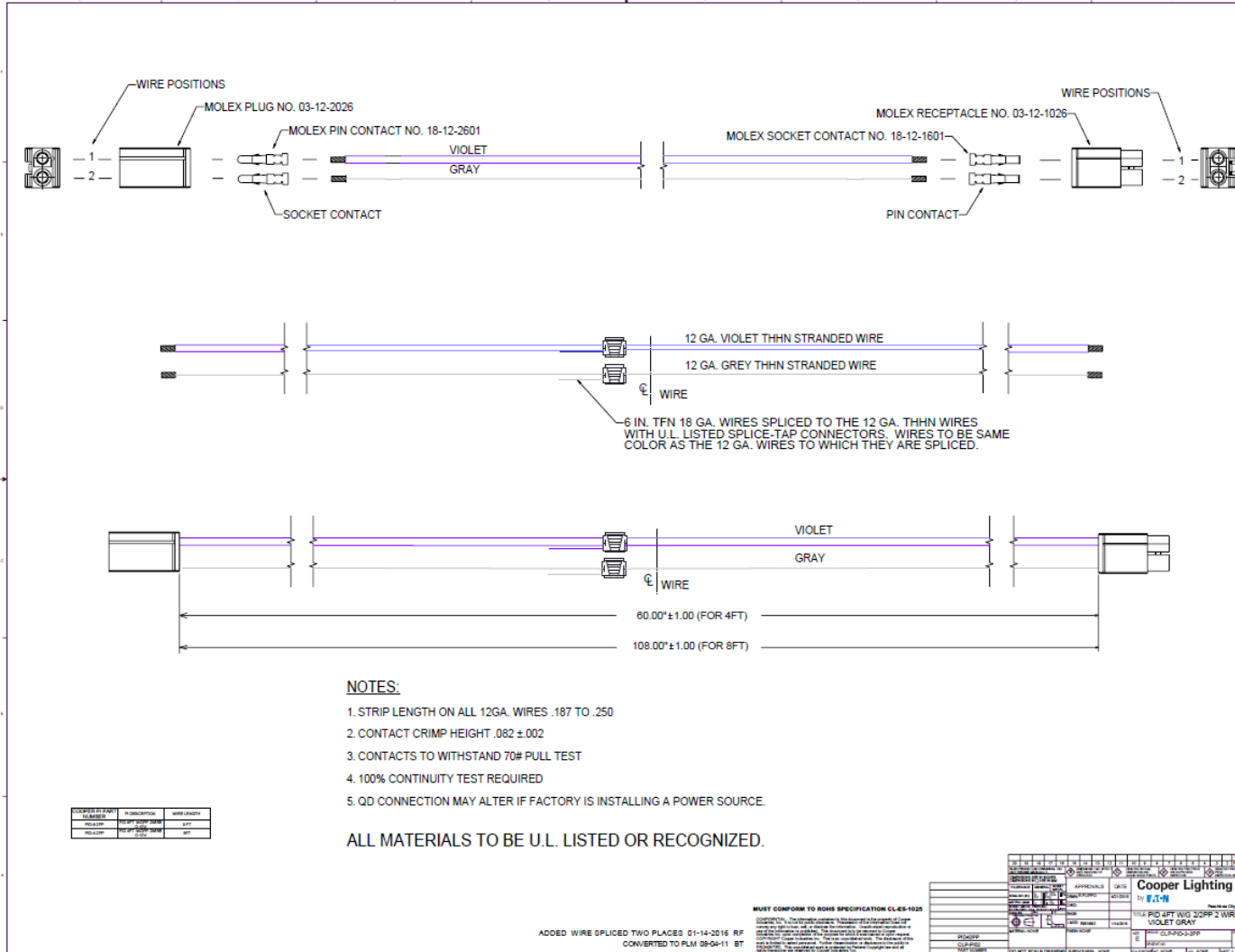
Customer to verify Code compliance when using harness for dimming circuits

Link: [Metalux Plug-In Options](#)

Example of a PI Harness (A/C Leads only) for Continuous Row Installation



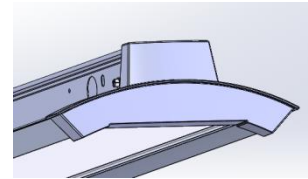
Example of a PI Harness (Dimming Leads only) for Continuous Row Installation



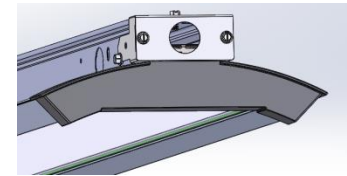
End Feed Connection

Accessory to supply power
on the end of the fixture
(Stand Alone or Row Mounted)

PN : EndFeed-WSL-U



STANDARD



END FEED

Kit includes two end caps with each one including a 1/2" knockout

Sensor option not compatible with this accessory

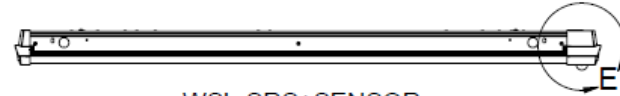
WSL Installation Alternatives: End Cap Examples



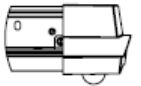
WSL-SRS



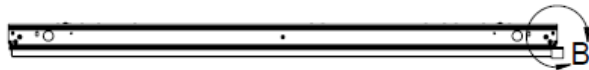
DETAIL A
SCALE 1 : 4



WSL-SRS+SENSOR



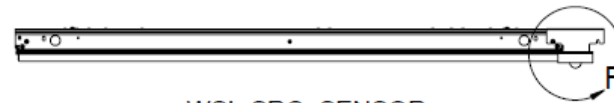
DETAIL E
SCALE 1 : 4



WSL-SRC
(INCLUDES ENDCAP FOR END OF ROW)



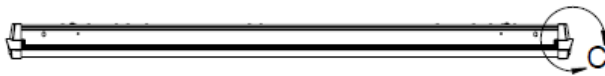
DETAIL B
SCALE 1 : 4



WSL-SRC+SENSOR
(INCLUDES ENDCAP FOR END OF ROW)



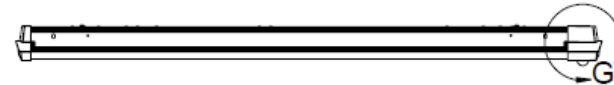
DETAIL F
SCALE 1 : 4



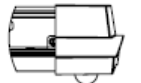
WSL-SPS



DETAIL C
SCALE 1 : 4



WSL-SPS+SENSOR



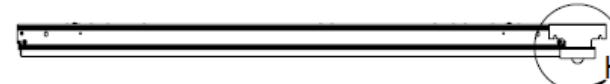
DETAIL G
SCALE 1 : 4



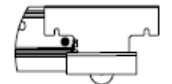
WSL-SPC
(INCLUDES ENDCAP FOR END OF ROW)



DETAIL D
SCALE 1 : 4



WSL-SPC+SENSOR
(INCLUDES ENDCAP FOR END OF ROW)



DETAIL H
SCALE 1 : 4

EATON

Powering Business Worldwide