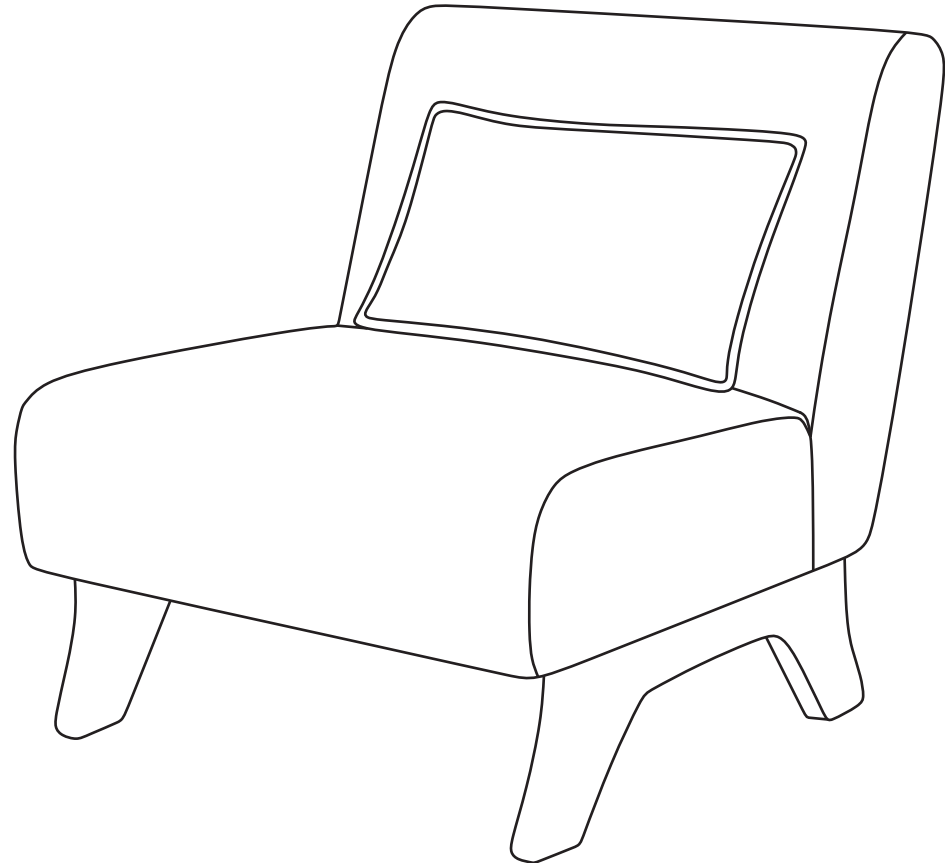


Instruction Manual

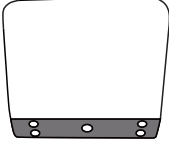
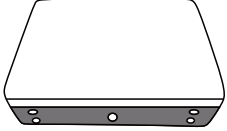
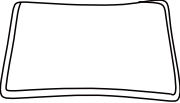
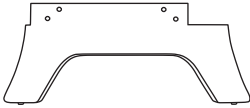
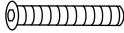



User Guide

Make life better

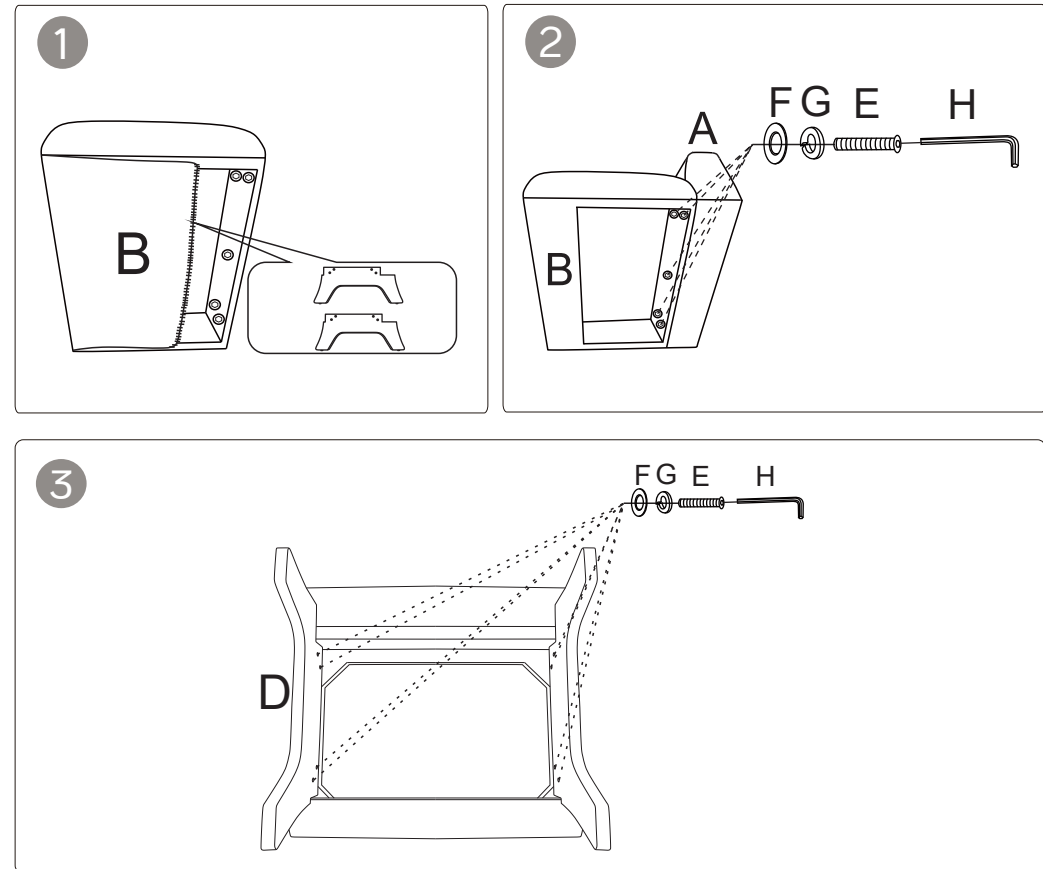
Warm Tips: We are proud to offer high-quality products and excellent customer service. However, items may occasionally be affected during transportation. If you receive a product with missing or damaged parts, please take photos and contact our customer service team before returning the item. We will provide a solution that meets your satisfaction. Thank you.



Instruction

NO	DESCRIPTION		QTY
A	Backrest		1
B	Seat Frame		1
C	Lumbar Pillow		1
D	leg		2
E	Screw	$\Phi 5/16$ "* 2"L 	13
F	Flat Washer	$\Phi 5/16$ "*22mm 	13
G	Lock Washer	$\Phi 5/16$ " 	13
H	Allen Wrench	$\Phi 5$ mm 	1

Installation Method



Note:The package contains a backrest, seat frame, lumbar Pillow, legs, and hardware package. The legs are placed in an inner box at the bottom of the seat frame.

- 1.Pull open the Velcro at the bottom of the base frame to take out the two wooden legs B
- 2.Align the holes of backrest A and seat frame B, and then tighten them with screws F, G, E.
- 3.Align the wooden leg D with the seat frame B, and then tighten them with screws H..(the side with the larger notch on the wooden leg should face forward.)
- 4.Finally, take out the lumbar Pillow C and place it on the sofa, completing the installation.