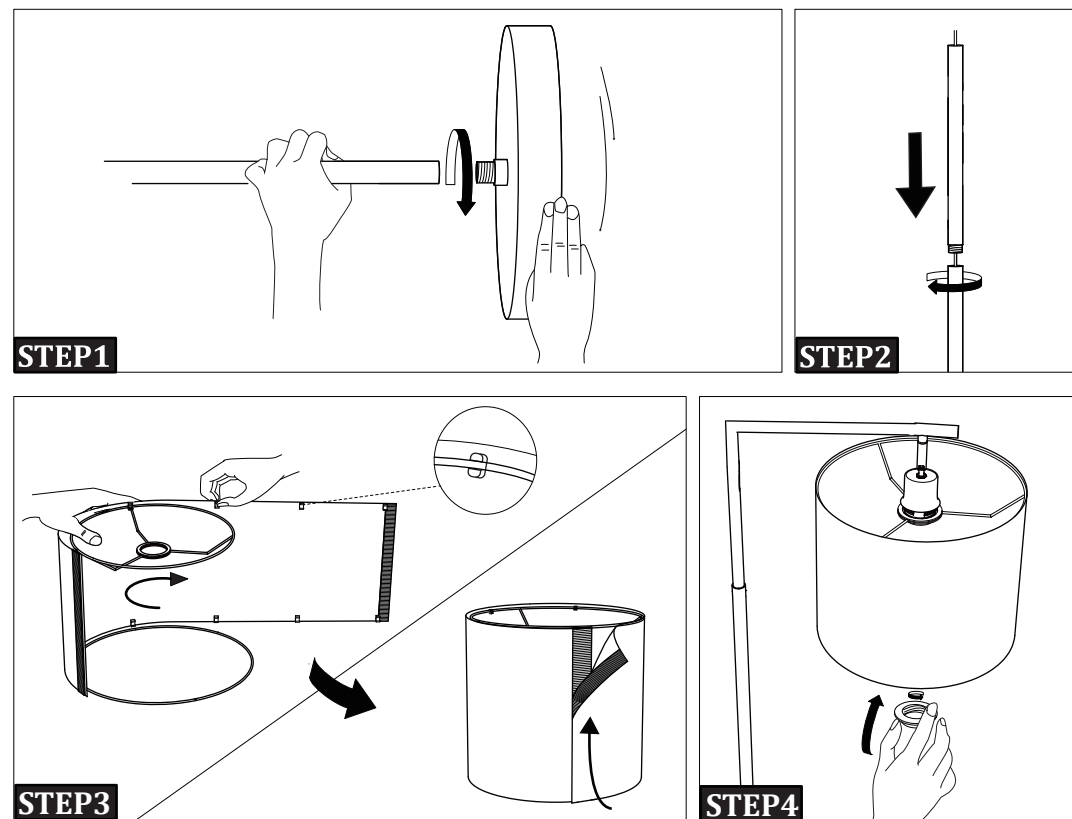


AA:Lampshade **BB:**Shade Frames **CC:**Socket Ring **DD:**Lamp Pole **EE:**Lamp Base



INSTALLATION GUIDE

First of all,make sure that all parts are present.

STEP1 Screw **DD** and **EE** tight by spinning **EE**.

STEP2 Install each part of **DD**.

STEP3 Fit the **BB** part in the **AA** part, attach one edge of the velcro to another.

STEP4 Install **CC** and bulb.

USING TIPS

Plug in the power first, then press the foot switch and use remote to turn on/off the lamp or adjust the lightness.