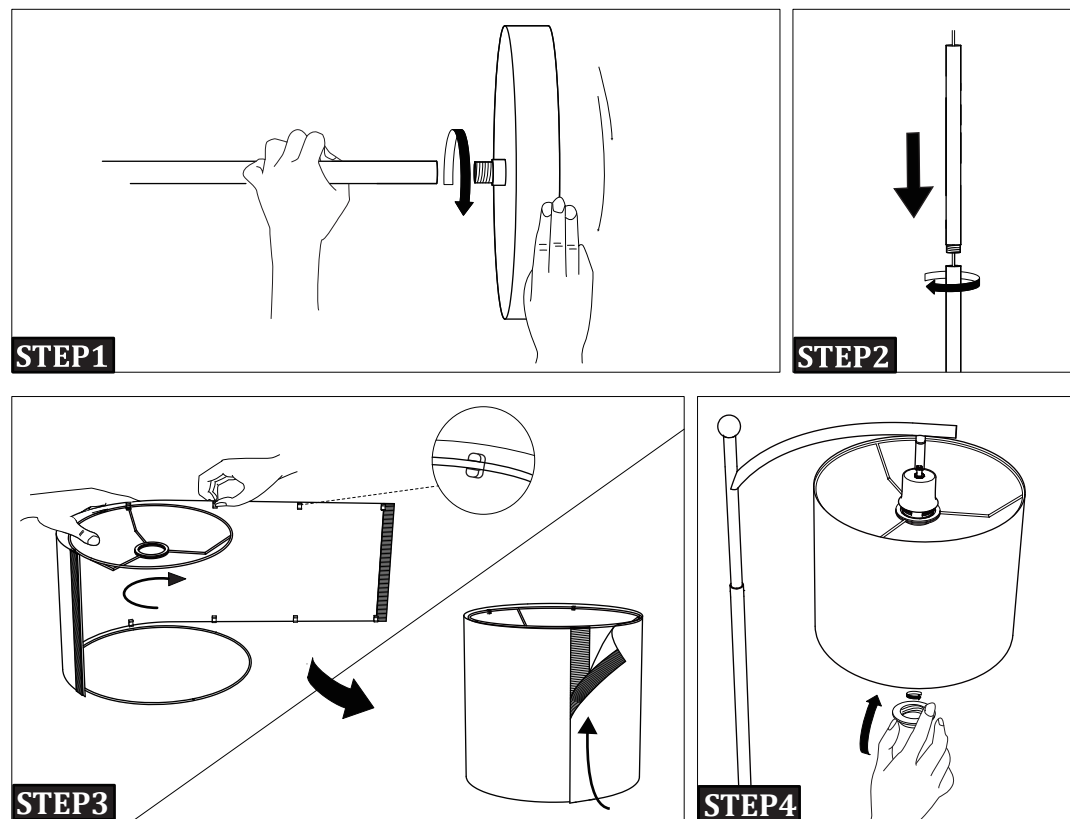


AA:Lampshade **BB:**Shade Frames **CC:**Socket Ring **DD:**Lamp Pole **EE:**Lamp Base



INSTALLATION GUIDE

First of all,make sure that all parts are present.

STEP1 Screw **DD** and **EE** tight by spinning **EE**.

STEP2 Install each part of **DD**.

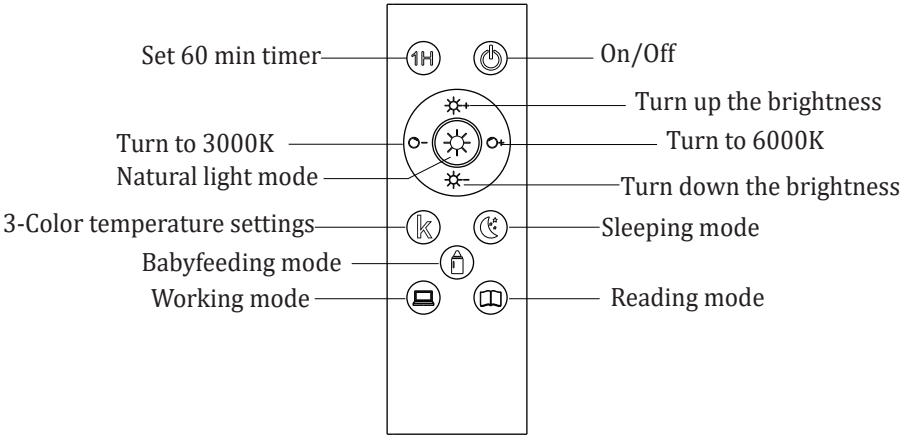
STEP3 Fit the **BB** part in the **AA** part, attach one edge of the velcro to another.

STEP4 Install **CC** and bulb.

USING TIPS

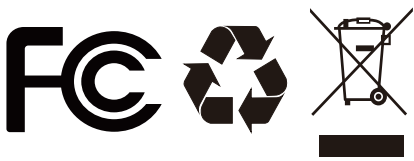
Plug in the power first, then press the foot switch and use remote to turn on/off the lamp or adjust the lightness.

REMOTE CONTROL FUNCTION



TROUBLE SHOOTING

- 1.**If your lamp does not work,please make sure that plug is firmly in and 2 batteries were installed in the remote, then press the Rocker and on/off button of the remote to turn on.
- 2.**If the remote can not control the bulb, please try to reconnect remote to the bulb as following step:
After the bulb turn on,long press the remote's on/off button within 3 seconds until the bulb flashes.



This device complies with Part 15 of the FCC Rules. Operation is subject to the following two conditions: (1) this device may not cause harmful interference, and (2) this device must accept any interference received, including interference that may cause undesired operation.

USER GUIDE

