

ASSEMBLY INSTRUCTIONS

SAFETY INFORMATION

CAUTION Read all instructions and using this desk.

– Save these instructions

1. Close supervision is necessary when this furnishing is used by, or near children, invalids, or disabled persons.
2. Use this furnishing only for its intended use as described in these instructions.
Do not use attachments not recommended by the manufacturer.
3. Installation and assembly must be performed by an adult.
4. Ensure that the floor is able to with stand the weight of the console when fully loaded.
5. To reduce risk of personal injury and product damage, always ensure a sufficient amount of personnel are present when unpacking, moving and assembling the desk system.
6. Do not leave children alone to climb or play in or around this desk all the time.
7. Use this product for its intended purpose only.
8. To avoid damage, assemble the desk on a sturdy, level and protective surface.
9. Two or more persons work together to install this product if needed.
10. Make sure all screws are tightly fastened before the product is used.
11. Check screws periodically and tighten them if necessary.

Failure to adhere to these warnings may result in serious injury or property damage.



WARNING

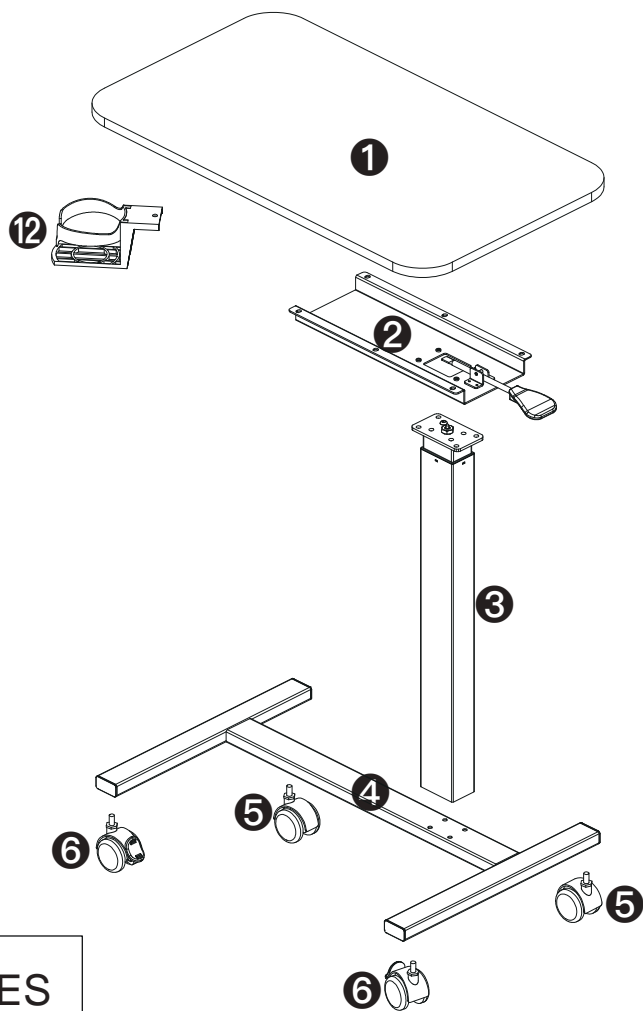
ADULT ASSEMBLY REQUIRED

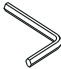

CHOKING HAZARD

- This product includes small parts, sharp points and sharp edges in its unassembled state.
- Keep unassembled parts away from children under 3 years of age, and animals.
- To avoid damage, assemble the product on a sturdy, protective and level surface.
- Two or more persons work together to install this product if needed.
- Make sure all screws are tightly fastened before the product is used.
- Check screws periodically and tighten them if necessary.
- Follow the information on the warnings appearing on this manual.
- DO NOT use substitute parts. Contact our customer service for replacement parts.

Main accessories installation position

♦ Please check all parts and accessories. If there are any problems such as defects or missing parts, please E-mail us for assistance. We will strive to resolve your problem within 24 hours on business days.



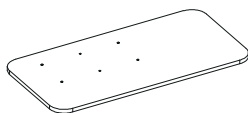
	YES
	NO

01 Check Various Accessories

Accessory Details

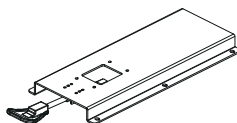
Please check and ensure all the things are in the package.
You can contact us for help if something is not included.

***2 is fixed on 1. Unscrew 2 before installation.**



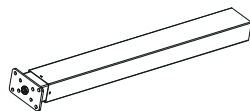
1 x1

Desk Board



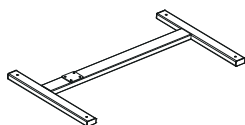
2 x1

Mechanism



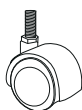
3 x1

Stand Rod



4 x1

Base Bracket



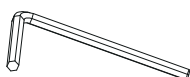
5 x2

Caster



6 x2

Brake Caster



7 x1

M6 Wrench



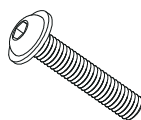
8 x6

Screw M6x10



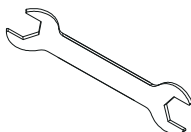
9 x5

Screw M6x12



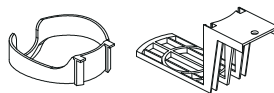
10 x4

Screw M6x40



11 x1

Wrench



12 x1

Cup Holder

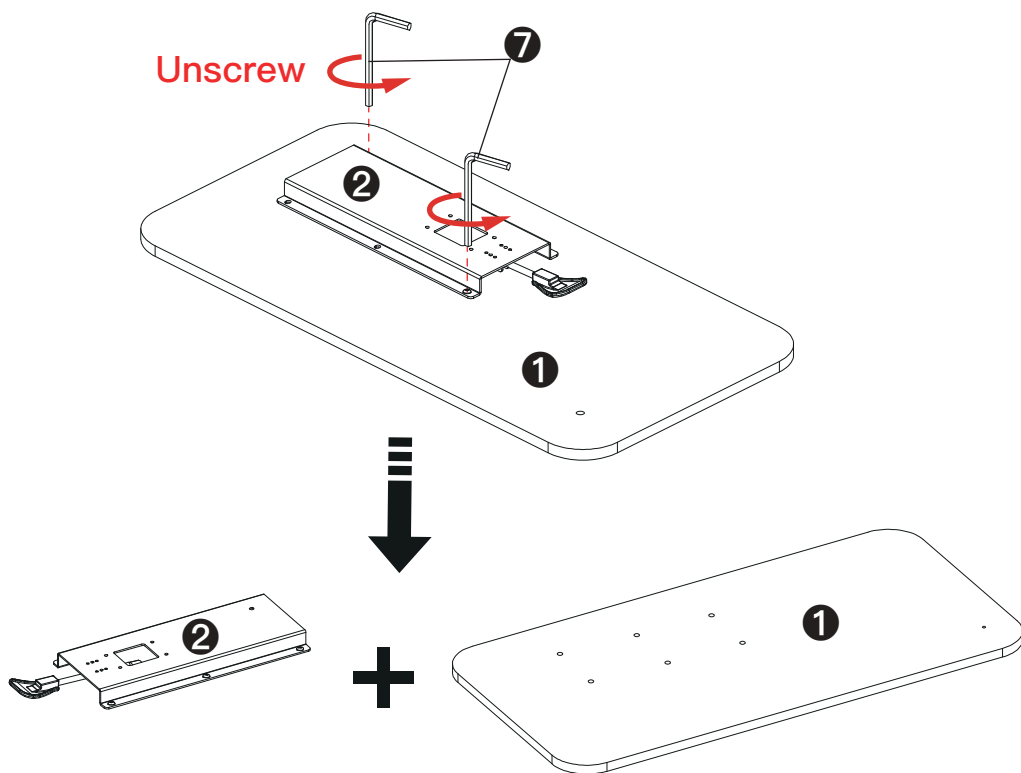
02 Installation

Please keep the original box in case you might need to return or replace the product.

◆ Please check and ensure all the things are in the package. Please contact us if something is not included. We will reply within 24 hours and try our best to solve it.

01

Unscrew the ② fixed on ①.



⚠ Attention ⚠

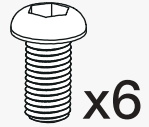
To ensure effective protection, the mechanism ② has been securely fastened to the desk board ① to prevent breakage during shipment.

02

Install the mechanism **2** as shown.

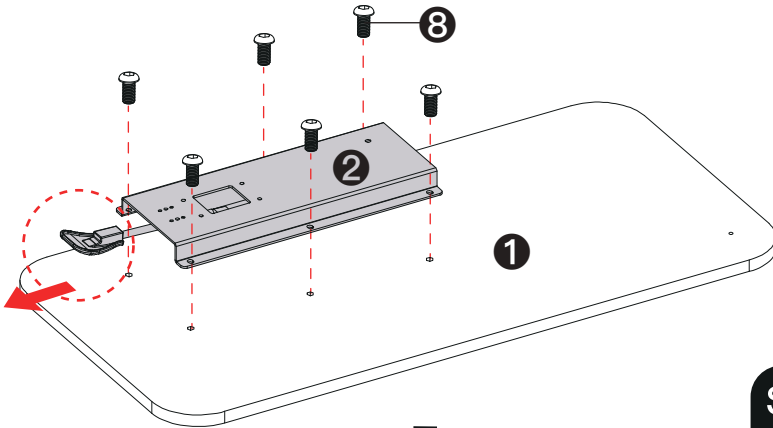
TOOLKIT

A

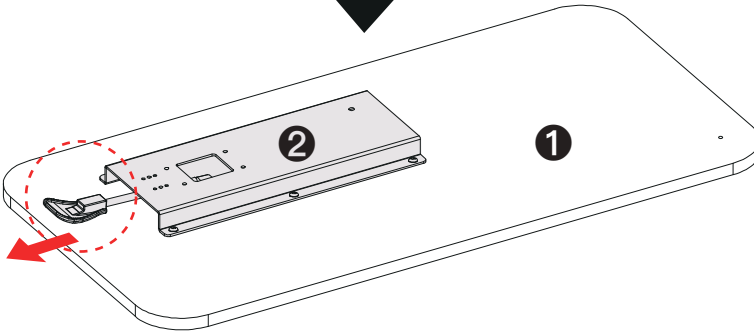


x6

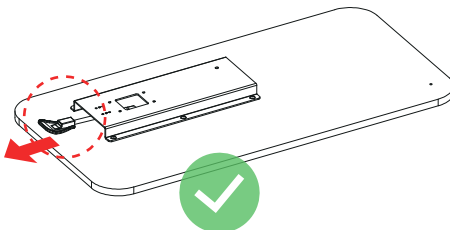
8 M6x10



Screw **100%**
tight



Pay attention to the direction of the handle.

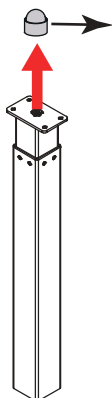
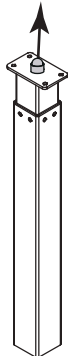


The handle should be near
the edge of the desk board
as shown.

03

Install the stand rod ③.

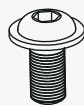
Protective cap



Please be sure to remove the protective cap when assembling.

TOOLKIT

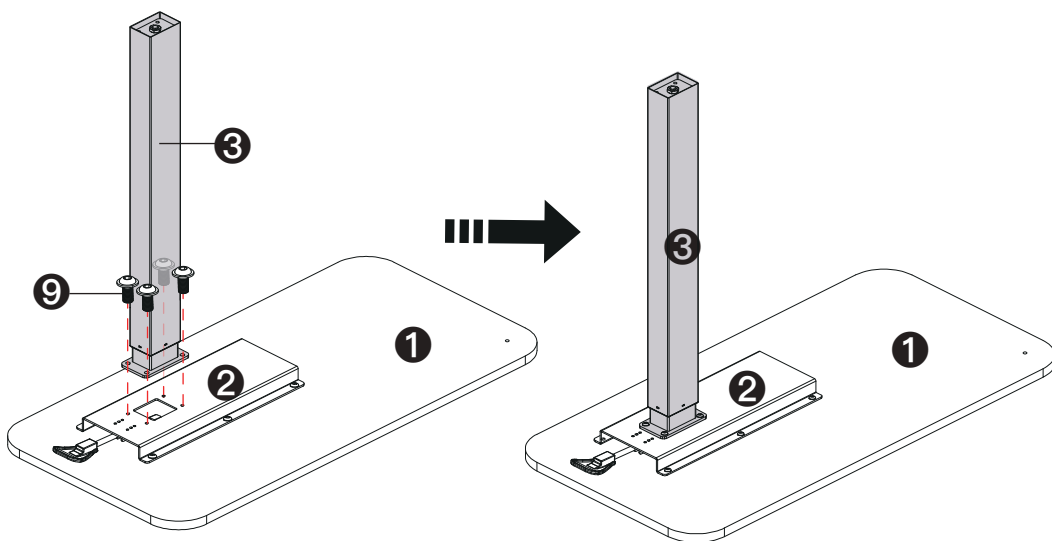
B



x4

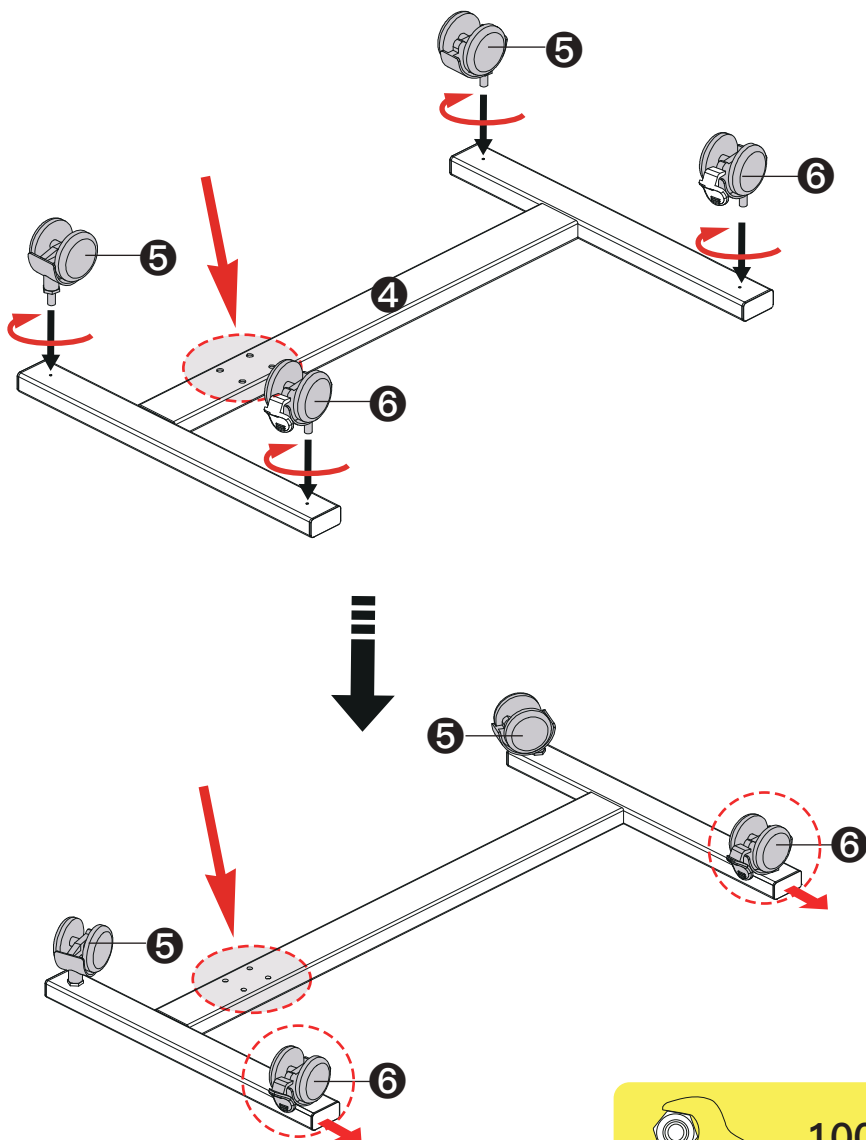
⑨ M6x12

Screw **100%**
tight



04

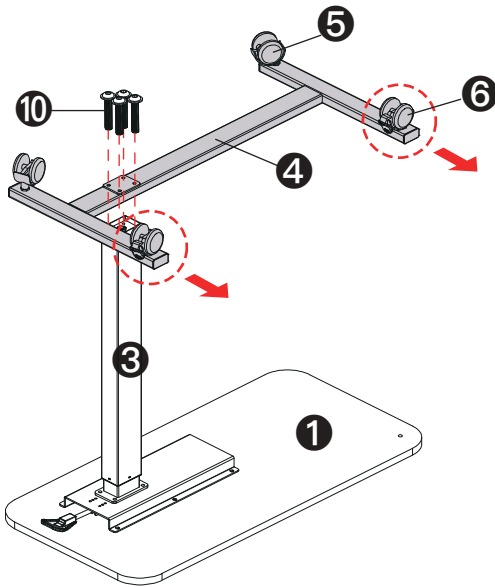
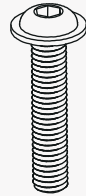
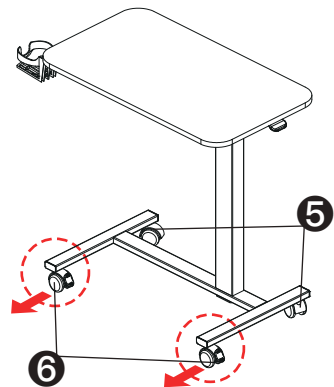
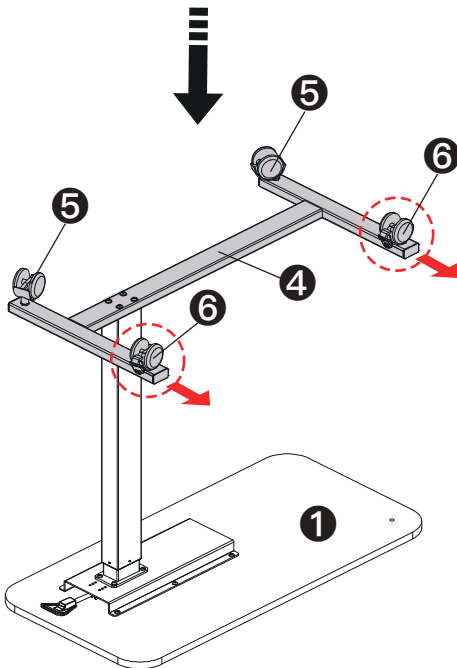
Install the casters **5** and the brake casters **6**.
(Usage of brake casters **6** see page 12)



100%

05

Install the base bracket **4** to stand rod **3**.

**TOOLKIT****x4****10** M6x40

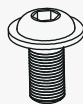
*Check to ensure that the installation direction of **5** and **6** is correct as shown.

06

Install the cup holder 12 as shown.

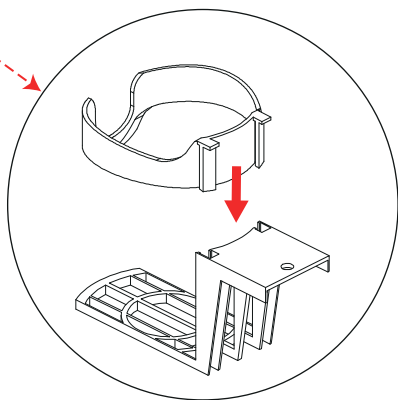
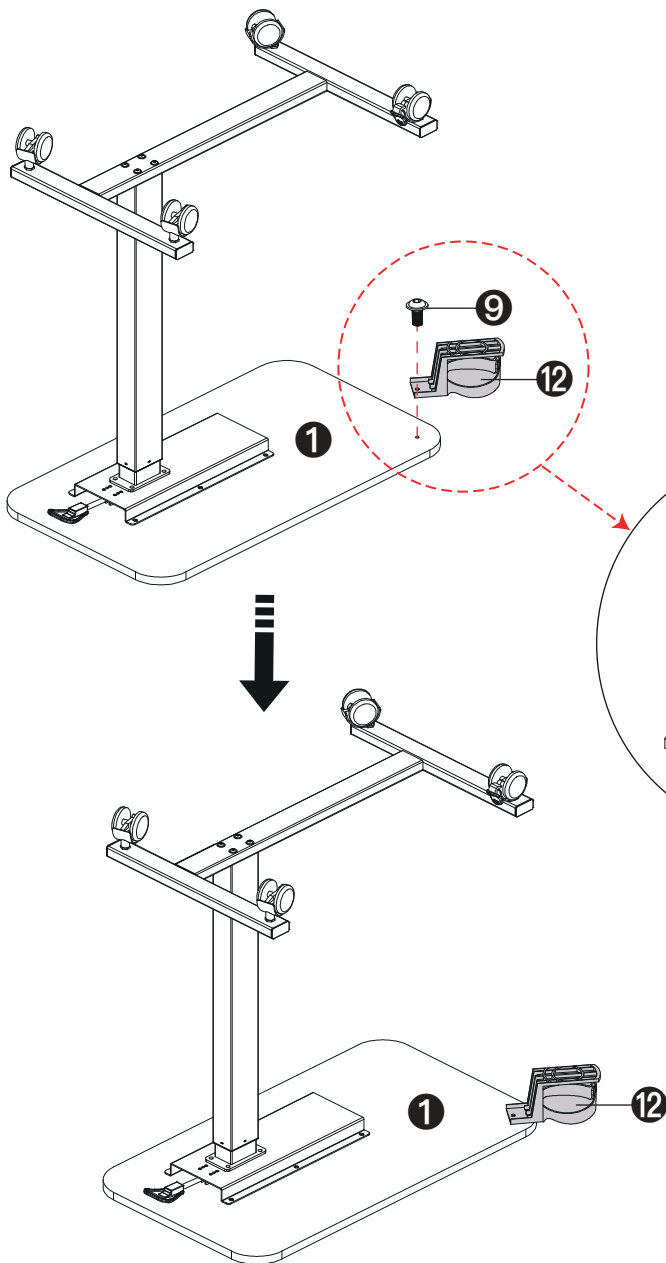
TOOLKIT

B



x1

9 M6x12



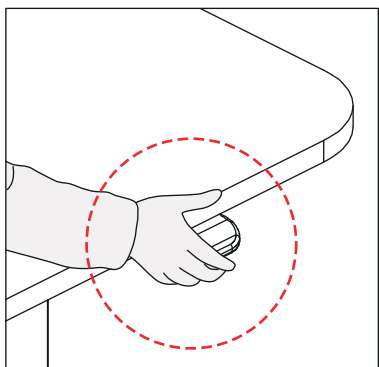
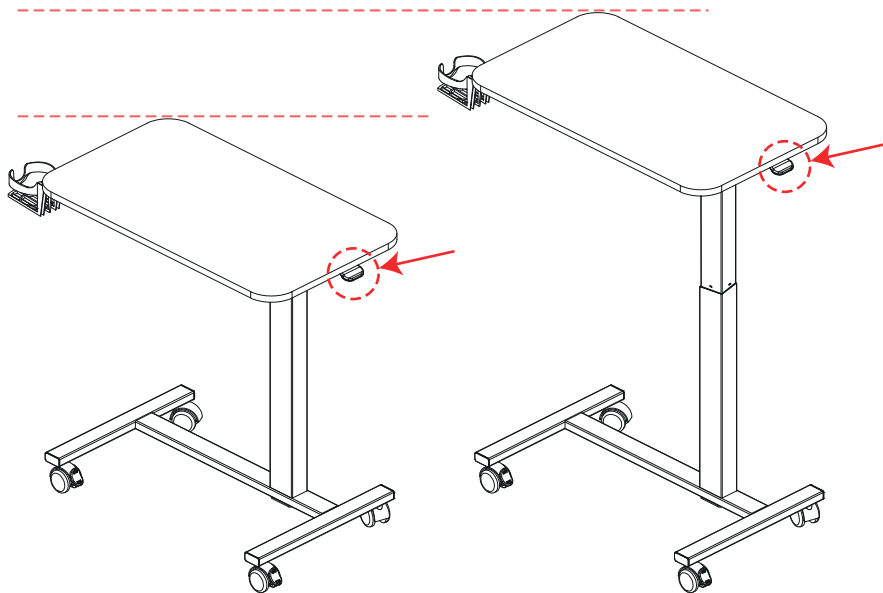
Screw **100%**
tight

03 Instructions For Use

Functions Display

Please read the function introduction carefully.

Height Adjustment



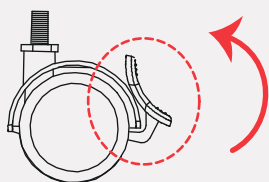
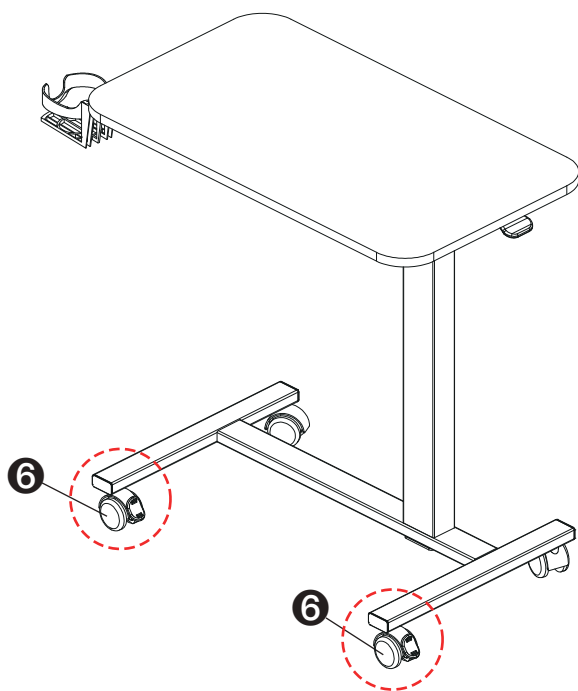
(1). Up Operation

Press the handle and the desk will automatically rise. Release the handle at the desired height.

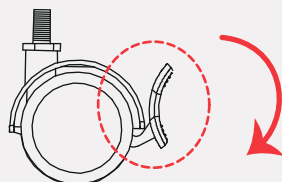
(2). Down Operation

Press the handle and push down on both sides of the desk with both hands. Release it to the desired position.

Usage of brake casters ⑥



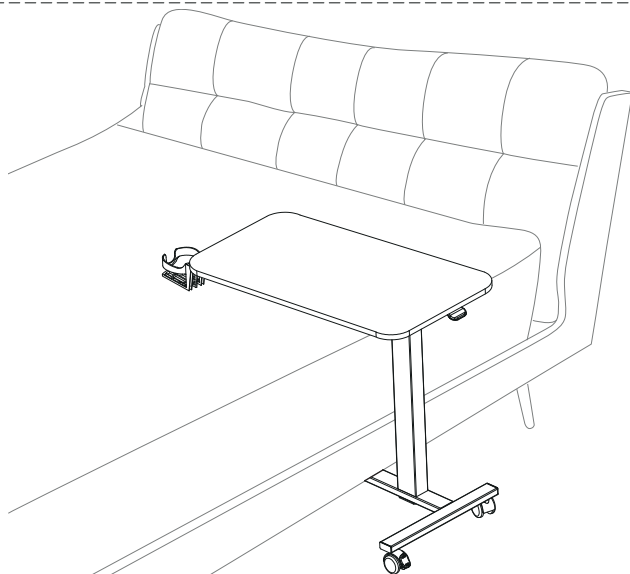
Unlock



Lock

Application scenario

A.



B.

