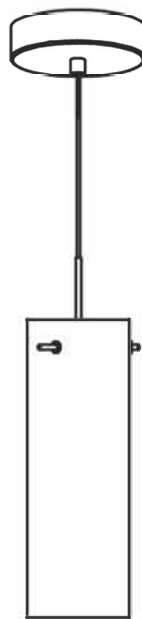


Please consult your electrician for hanging fixture and wiring.



The fixture is designed to dim with a standard Triac forward phase dimmer. Dimming levels will vary by dimmer. Below is a list of recommended dimmers:

Due to inrush current, wattage should not exceed 150 Watts of product for a 600W dimmer.

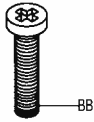
WARNING: Wires need to be connected to driver found in canopy and should not be connected directly to power source or a short may occur.

3000K-4000K-5000K DIMMABLE

IMPORTANT: Turn off the power at the main fuse or circuit breaker box before starting installation



Wire Nuts(AA)
3pcs



1-1/4" Screws(BB)
2pcs

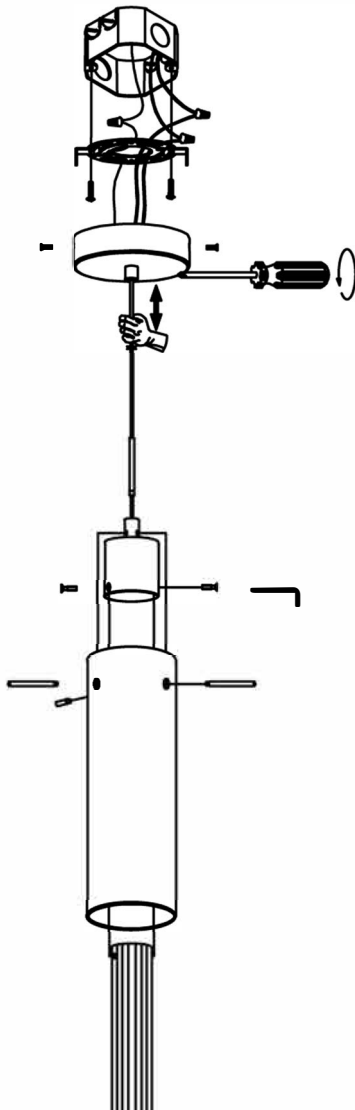


Fixture Screws(CC)
2pcs



Crossbar Assembly(DD)
1 pc

Locate all hardware & components before discarding packaging



Cleaning & Care:

Clean with soft cloth and a mild detergent.
Do not use abrasive cleaner.

1.)



color temperature(3000K-4000K-5000K)

Step 1: Choose needed color temperature by adjusting switch position.

2.)



Step 2: Remove the crossbar assembly from the ceiling canopy .

Secure the crossbar assembly to the outlet box (not included) with the outlet box screws.

3.)



Step 3: Use wire connectors to connect the wires.

Ground wire: 1. Wrap the supply ground wire around the green ground screw on the crossbar assembly , no less than 2 in. from the end of the wire. Tighten the ground screw.

2. Connect the fixture ground wire to the supply ground wire with a wire connector .

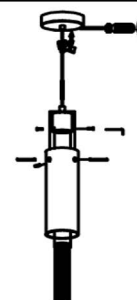
Supply wire: 1. Connect the supply white wire to the white fixture supply wire with a wire connector .

2. Connect the supply black (or red) wire to the black fixture supply wire with a wire connector .

3. Wrap each connection with approved electrical tape and carefully insert all of the connected wires into the outlet box.

Assembling the fixture body to the outlet box Line up the holes on the ceiling canopy and the mounting holes on the crossbar assembly(DD) . Secure with the lock screws(CC) . Tighten until snug

4.)



Step 4: Press the buttons under the canopy on the fixture body , where the fixture wire comes out, to adjust the fixture wire to the desired length. Release the buttons to hold the fixture wires in position, as shown in the diagram.

Place Crystal into holder and secure with thumb screws . Place Glass Shade into Crystal and secure with thumb screws .