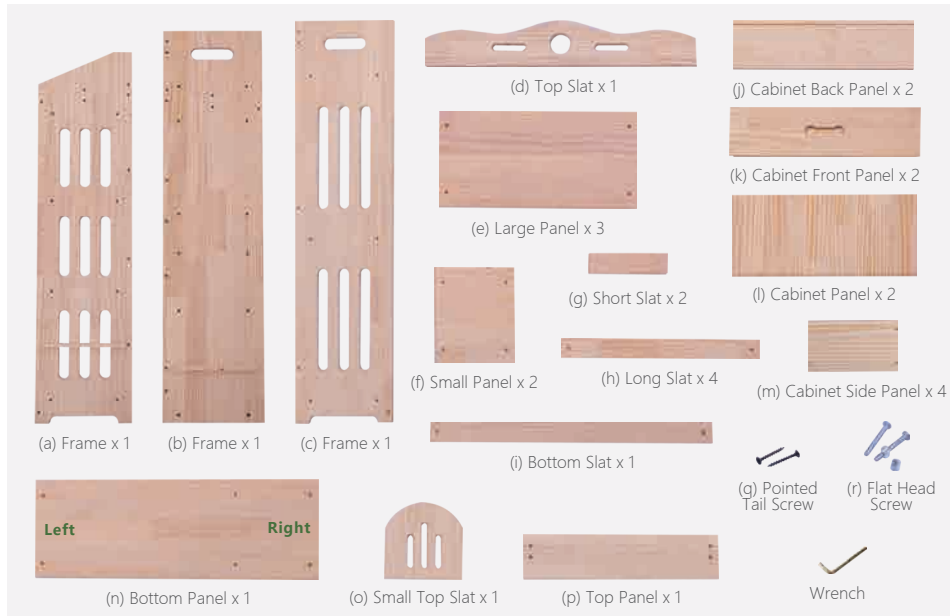


USER GUIDE

BOOKSHELF

Natural / Stylish / Unique

HARDWARE



ATTENTION

- ① Please always read and follow the assembly, maintenance and operating instruction.
- ② Do not discard any of the packaging until you have checked that you have all the parts and pack of fittings.
- ③ Keep children away during assembly. This item contains small parts which can be swallowed by children.
- ④ Wipe frames with water gently, do not use bleach, acid, or other solvents.
- ⑤ Check all hardwares before assembly. Incorrect parts used may lead to damage.



Scan the QR code to view the assembly video.

CABINET ASSEMBLY



- ① Position Side Panels (m) and Front Panel (k) as picture shown, secure with Pointed Tail Screw (q).



- ② Position and insert Panel (l) to slot.



- ③ Insert Back Panel (j) to slot as picture shown, secure with Pointed Tail screw (q).

ASSEMBLY INSTRUCTIONS



- ① Position Frame (a), Bottom Slat (i), and Bottom Panel (n) as picture shown. Secure with Flat Head Screws (r).



- ② Position and secure Large Panels (e) with Flat Head Screws (r).



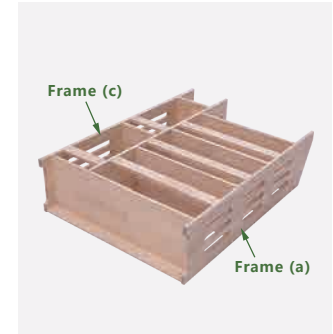
- ③ Position and secure Long Slats (h) with Flat Head Screws (r).



- ④ Secure Frame (b) with Flat Head Screws (r).



- ⑤ Position Short Slats (g) and Small Panels (f) as picture shown. Secure with Flat Head Screws (r).



- ⑥ Position and secure Frame (c) with Flat Head Screws (r).



- ⑦ Install Top Slat (d) and Small Top Slat (o) with Flat Head Screws (r).



- ⑧ Secure Top Panel (p) and Long Slat (h) with Flat Head Screws (r).



- ⑨ Insert cabinets and done.