

TABLE OF CONTENTS

| | |
|--|-----------|
| RANGE HOOD SAFETY | 2 |
| INSTALLATION REQUIREMENTS | 4 |
| Tools and Parts Requirements | 4 |
| Location Requirements | 4 |
| Installation Dimensions | 5 |
| Ventilation Requirements | 6 |
| Electrical Requirements | 7 |
| INSTALLATION INSTRUCTIONS | 8 |
| Preparing The Location..... | 8 |
| Connect Vent System | 10 |
| Mounting The Range Hood..... | 11 |
| Electrical Connection | 12 |
| Air Ventilation Setting..... | 13 |
| RANGE HOOD USE | 14 |
| Range Hood Controls | 15 |
| RANGE HOOD CARE | 16 |
| Cleaning | 16 |
| Replacement | 17 |
| TROUBLE SHOOTING | 18 |

RANGE HOOD SAFETY

Your safety and the safety of others are very important.

We have provided many important safety messages in this manual and on your appliance. Always read and obey all safety messages.



This is the safety alert symbol.

This symbol alerts you to potential hazards that can kill or hurt you and others.

All safety messages will follow the safety alert symbol and either the word "DANGER" or "WARNING."

These words mean:

DANGER

Adhering to instructions promptly is crucial as failure to do so could potentially result in severe injury or even loss of life.

WARNING

You can be killed or seriously injured if you don't follow instructions.

IMPORTANT SAFETY INSTRUCTIONS

WARNING: TO REDUCE THE RISK OF FIRE, ELECTRIC SHOCK, OR INJURY TO PERSONS, READ THE FOLLOWING:

- Use this unit only in the manner intended by the manufacturer. If you have questions, please contact the manufacturer.
- Before servicing or cleaning the unit, switch the power off and lock the service panel. This will prevent the power from accidentally turning on. If the service panel does not lock, secure a warning label, such as a tag, to the service panel.
- Installation work and electrical wiring must be done by a qualified professional(s) in accordance with all applicable codes, standards, and fire-rated constructions.
- Do not operate any fans with a damaged cord or plug. Discard the fan or return to an authorized service facility for further examination and/or repair.
- To prevent back draft, sufficient air is needed for proper combustion. Gas from fuel burning equipment needs to exhaust through the flue (chimney). Follow the heating equipment manufacturer's guideline and safety standards such as those published by the National Fire Protection Association (NFPA), the American Society for Heating, Refrigeration and Air Conditioning Engineers (ASHRAE), and the local code authorities.
- When cutting or drilling into walls or ceilings; be aware of electrical wires, piping, and other utilities.
- Ducted fans must always be vented outdoors.

CAUTION: For general ventilation use only. Do not use to exhaust hazardous or explosive materials and vapors.

CAUTION: To reduce the risk of fire and to properly exhaust air, be sure to duct air outside - DO NOT vent exhaust air into attics, crawl spaces, garages, or within walls and ceilings.

WARNING: TO REDUCE THE RISK OF A RANGE TOP GREASE FIRE, READ THE FOLLOWING:

- Never leave surface units unattended at high settings. Boil-over can cause smoke and grease to spill over that may ignite. Heat oils slowly on low or medium settings.
- Always turn the hood ON when cooking at high heat or when flambéing food (i.e. Crepes Suzette, Cherries Jubilee, Peppercorn Beef Flambé).
- Clean ventilation fans frequently. Grease should not be allowed to accumulate on fan or filter.
- Use proper pan size. Always use cookware appropriate for the size of the surface element.

WARNING: TO REDUCE THE RISK OF INJURY. IN THE EVENT OF A RANGE TOP GREASE FIRE, READ THE FOLLOWING:

- SMOTHER FLAMES with a close fitting lid, cookie sheet, or metal tray, then turn off the burner. BE CAREFUL TO PREVENT BURNS. If the flames do not go out immediately, EVACUATE AND CALL THE FIRE DEPARTMENT.
- NEVER PICK UP A FLAMING PAN - you may be burned.
- DO NOT USE WATER, including wet dishcloths or towels - a violent steam explosion will result.
- Use an extinguisher ONLY if:
 - You know you have a class ABC extinguisher, and you already know how to operate it.
 - The fire is small and contained in the area where it started.
 - The fire department is being called.
 - You can fight the fire with your back to an exit.

Based on "Kitchen Fire Safety Tips" published by NFPA.

- **WARNING:** To reduce the risk of fire or electrical shock, do not use this fan with any solid-state speed control device.

INSTALLATION REQUIREMENT

TOOLS AND PARTS REQUIREMENTS

Electrical drill or ratchet driver

1/2" drill bit for drilling pilot holes

1 1/4" drill bit for drilling electrical wiring access hole.

Screwdrivers: Philips & Straight blade

Pliers

Tape measure or ruler and pencil

Electrical supplies for wiring

Aluminum foils tape and/or duct tape

Hammer

Jigsaw or saber saw

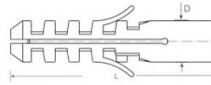
Stud finder



ST4x30 QTY:10



ST4x6 QTY:8



Φ5xΦ8 QTY:10

Parts Supplied

| | |
|---------------------|--------|
| Body | 1 Pc |
| Installation manual | 1 Set |
| Aluminum filter | 2-3Pcs |
| Air outlet | 1 Pc |
| Hardware | 1 Set |

Disclaimer: Screws may vary from model to model.

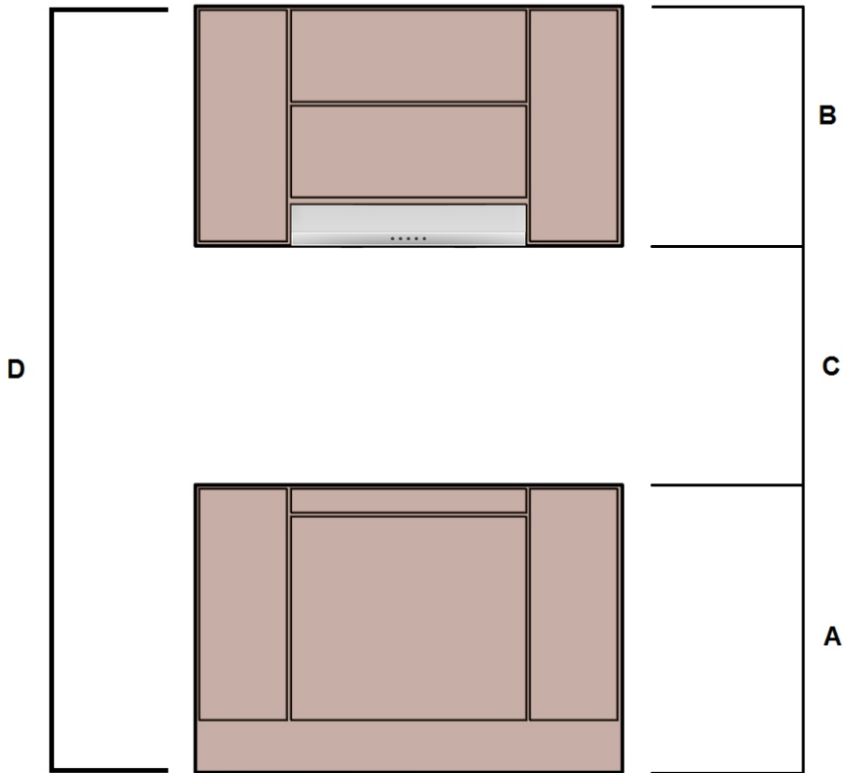
LOCATION REQUIREMENTS

IMPORTANT: Observe all governing codes and ordinances. Have a qualified technician install the range hood. It is the installer's responsibility to comply with installation clearances specified on the model/serial rating plate.

Canopy hood's location should be away from strong draft areas, such as windows, doors, and strong heating vents.

Cabinet opening dimensions that are shown must be used. Given dimensions provide minimum clearance.

INSTALLATION DIMENSIONS



- A. Countertop height
- B. Hood height from ceiling to bottom of the range hood filter surface: $D-A-C=B$
- C. 25.6" (65 cm) min. from cooking surface, suggested 30" (76.2 cm) max.
- D. Ceiling height

VENTILATION REQUIREMENTS

- Range hoods must be ventilated to the outdoors
- Do not ventilate the range hood into an attic or other enclosed areas.
- Do not use 4" (10.2 cm) laundry-type wall caps.
- The length of the range hood and the number of elbows should be kept to a minimum to provide maximum performance.

For Optimal Efficiency and Quiet Operation

- Use no more than three 90° elbows.
- Make sure there is a minimum of 24" (61 cm) of straight duct between the elbows if more than one elbow is used.
- Do not install two elbows together.
- Use clamps to seal all joints in the vent system.
- The vent system must have a damper. If the roof or wall cap has a damper, do not use the damper supplied with the range hood.
- Use caulking to seal exterior walls or roof openings around the cap.
- The size of the vents should be uniform.

Cold Weather Installations

An additional back draft damper should be installed to minimize backward cold air flow. A thermal break should be installed to minimize conduction of outside temperatures as part of the vent system. The damper should be on the cold air side of the thermal break.

The break should be as close as possible to where the vent system enters the heated portion of the house.

Makeup Air

Local building codes may require the use of makeup air systems, when using ventilation systems greater than specified CFM of air movement. The specified CFM varies from state to state. Consult your HVAC professional for specific requirements in your area.

Venting Method

This canopy hood is factory set for through the roof or wall.

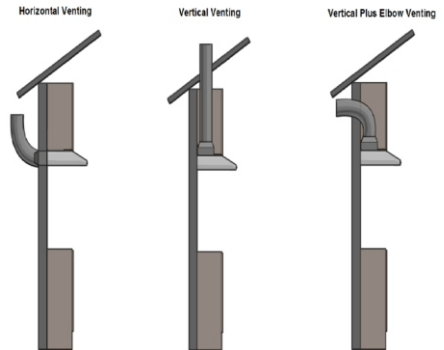
A 6" (15.2 cm) round vent system is needed for installation. The hood exhaust opening is 6" (15.2 cm) round.

To vent through a wall, a 90° elbow is needed.

If exhaust ducting with a diameter of less than 5.91" (150 mm) or if flat ducting is used, the noise level of the range hood will increase and extraction will be less efficient.



Rear Discharge

A 90° elbow may be installed immediately above the hood.



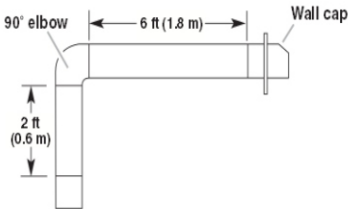
Calculating Vent System Length

To calculate the length of the system you need, add the equivalent feet (meters) for all vent pieces used in the system.

| Vent Piece | 6" (15cm) round | |
|------------|-------------------|---|
| 45° elbow | 2.5 ft (0.8 m) |  |
| 90° elbow | 5.0 ft (1.5 m) |  |

Maximum equivalent vent length is 35 ft (10.7 m).

Example vent system



The following example falls within the maximum recommended vent length of 35 ft (10.7 m).

| | |
|-----------------------|-------------------|
| 1 - 90° elbow | = 5.0 ft (1.5 m) |
| 1 - wall cap | = 0.0 ft (0.0 m) |
| 6 ft (2.4 m) straight | = 8.0 ft (2.4 m) |
| Length of system | = 13.0 ft (3.9 m) |

ELECTRICAL REQUIREMENTS

Observe all governing codes and ordinances. Ensure that the electrical installation is adequate and in conformance with the National Electrical Codes, ANSI/NFPA 70 (latest edition), or CSA Standards C22.1-94, Canadian Electrical Code, Part 1 and C22.2 No. 0-M91 (latest edition), all local codes, and ordinances. If codes permit and a separate ground wire is used, it is recommended that a qualified electrician determine that the ground path is adequate. A copy of the above code standards can be obtained from:

National Fire Protection Association
1 Batterymarch Park
Quincy, MA 02169-7471
CSA International
8501 East Pleasant Valley Road
Cleveland, OH 44131-5575

- A 120 volt, 60 Hz., AC only, 2-amp, fused electrical circuit is required.

- If the house has aluminum wiring, follow the procedure below:

1. Connect a section of solid copper wire to the pigtail leads.

2. Connect the aluminum wiring to the copper wire using special connectors and/or tools designed and UL listed for joining copper to aluminum.

Follow the electrical connector manufacturer's recommended procedure. Aluminum/copper connection must conform to local codes and industry accepted wiring practices.

- Wire sizes and connections must conform to the rating of the appliance as specified on the model/serial rating plate. The model/serial plate is located behind the filter on the rear wall of the range hood.

- Wire sizes must conform to the requirements of the National Electrical Code, ANSI/NFPA 70 (latest edition), or CSA Standards C22. 1-94, Canadian Electrical Code, Part 1 and C22.2 No. 0-M91 (latest edition) and all local codes and ordinances.

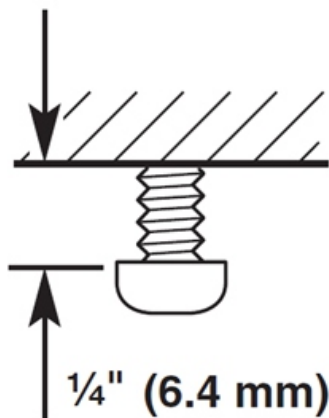
INSTALLATION INSTRUCTIONS

PREPARING THE LOCATION

- It is recommended for the vent system to be installed before hood is installed.
 - Before making cutouts, make sure there is proper clearance from the range hood to the cook top.
 - Check your cabinet's height and the hood height available for your ceiling before selecting your hood.
1. Disconnect the power.
 2. Determine which venting method to use: roof, wall, or back.

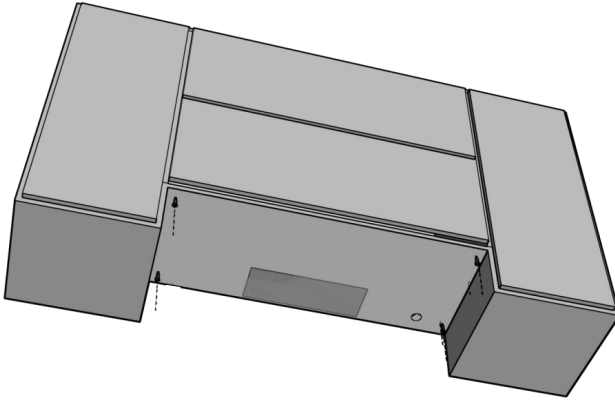
RANGE HOOD MOUNTING SCREWS INSTALLATION

1. Determine and mark the centerline on the cabinet where the range hood will be installed.
2. Select a mounting height between a minimum of 25.6" (65cm) for an electric cooking surface, a minimum of 25.6" (65cm) for a gas cooking surface, and a suggested maximum of 30" (76.2cm) above the cooking range to the bottom of the range hood. Mark a reference line on the wall.
 - a. **IMPORTANT:** All screws must be installed into wood. If there is no wood to screw into, additional wall framing supports may be required.
3. Drill $\frac{3}{16}$ " (4.8 mm) pilot holes at all locations where screws are being installed into wood.
4. Install 4x Φ 5x Φ 8 expanding tubes under the cabinet and ST4x30 screws in the inner sides of the cabinet.



Air Flow Flapper Preparation

5. Mark the flappers location under the cabinet.
6. Cut out a rectangle a little bit larger than the air flow flapper under the cabinet. Also, cut out a circle where the white, green, and black wires would be.



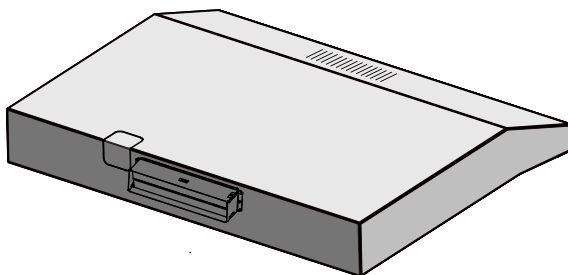
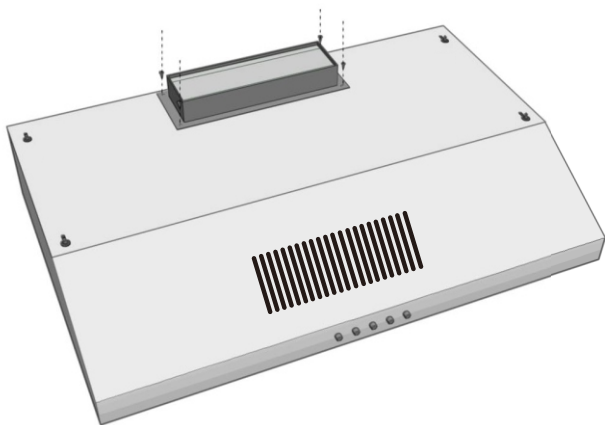
Complete Preparation

1. Determine and make all necessary cuts in the wall for the vent system. Install the vent system before installing the hood. See Page 6 "Ventilation Requirements" Section.
2. Determine the required height for the home power supply cable and drill a 1¼" (3.2 cm) hole at this location.
3. Run the home power supply cable according to the National Electrical Code or CSA Standards and local codes and ordinances. There must be enough conduits (½") and wires from the fuse box (circuit breaker) to make the connection in the hood's electrical terminal box.
 - a. **IMPORTANT:** Do not reconnect power until installation is complete.
4. Use caulking sealant to seal all openings.

STEP 1: CONNECTING VENT SYSTEM

Air Flow Flapper Installation

1. Install the non-return air flap on top or rear of hood with 4xST4x6 screws.



Note

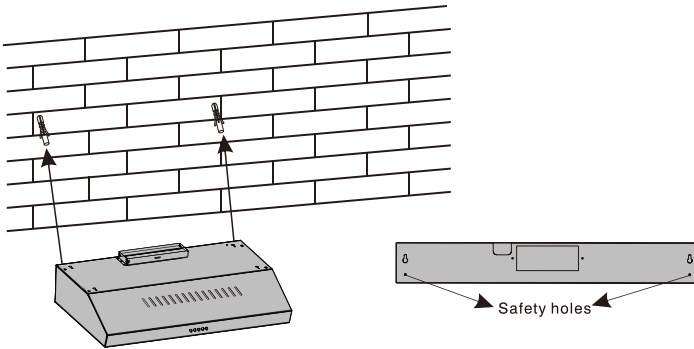
1. The extensible pipe are optional accessory, not supplied.
2. Take off protection film before installation.
3. There are 2 methods for ventilation, including horizontal ventilation and vertical ventilation.
When installing, please pay attention to the ventilation method.

STEP 2: MOUNTING THE RANGE HOOD

Two methods for installation(A&B)

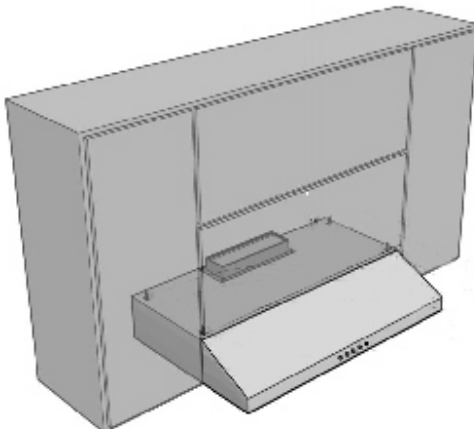
Method A (Wall mounted) :

1. According to the center distance of hole in the back of the slim hood, measure the position and then drill 2pcs $\varnothing 8\text{mm}$ holes on the wall. Insert the plastic wall anchors into each holes and tighten 2pcs $\text{ST4} \times 30$ screws into the plastic wall anchors.
2. Place the slim hood onto the tighten screws. Fix the cooker hood with 2pcs $\text{ST4} \times 30$ screws into the safety holes. The two safety screws vents are positioned on the back casing.



Method B (Under mounted) :

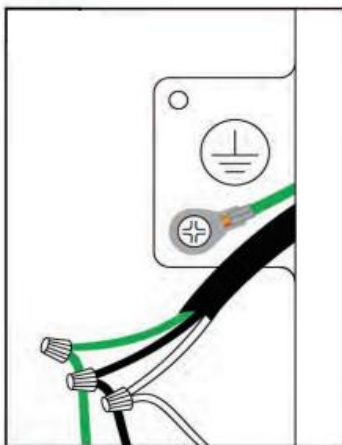
1. Measure the position and drill 4 holes of 6mm diameter into the bottom of cabinet and cut the vent hole in cabinet if needed.
2. Align the slim hood to the hole in the bottom of cabinet and screw in with 4 pcs $\text{ST4} \times 30$ screws as the picture.



STEP 3: ELECTRICAL CONNECTION

1. Connect the three prong cable (not included) to the existing cable on the range hood.
2. Connect the White to White, Black to Black, and Green ground to Green ground by either a solder or with a connection piece.

DO NOT FORGET TO GROUND THE CONNECTION

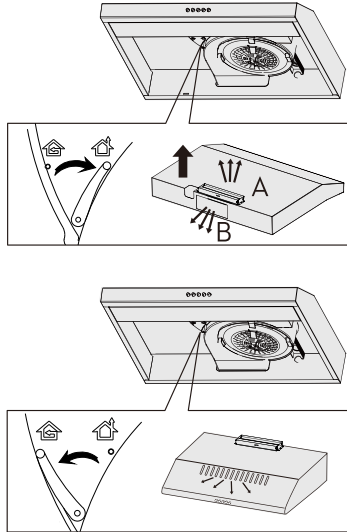


SAFETY WARNING: Risk of electrical shock. This range hood must be properly grounded. Make sure this is done by a qualified electrician in accordance with all national and local electrical codes. Before connecting the wires, switch the power off at the service panel and lock the service panel to prevent power from being switched on accidentally.


STEP 4: AIR VENTILATION SETTING


Ventilation: Turn the adjuster to outdoor position, install the outlet, turn on the cooker hood, then the air will be vented from the top or back outlet.

Recirculation : The recycling mode with carbon filter, turn the adjuster to indoor position, install the outlet cover, turn on the cooker hood, then the air can be vented from the front outlet.



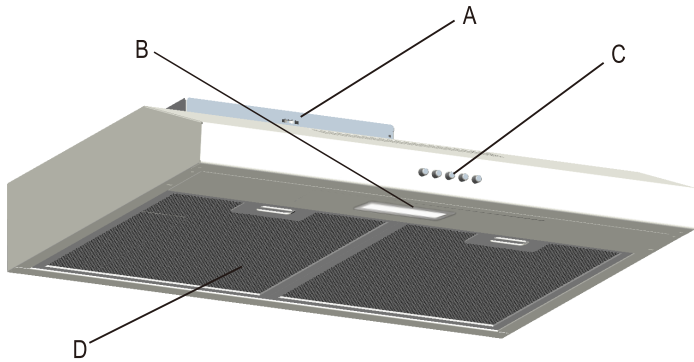
Remark:  Means Recirculation

 Means Ventilation

 **WARNING:** The charcoal cannot be washed or recycled. It should be changed at most after 120 days of use . The carbon filter shouldn't be exposed to heat.

RANGE HOOD USE

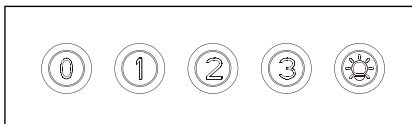
The range hood is designed to remove smoke, vapors, and odors. For best results, start the hood before cooking. After, the cooking process is complete, allow the range hood to run for several minutes to completely clear all the smoke and odors from the kitchen.



- A. Rectangle Air Outlet
- B. LED Light
- C. Control Panel
- D. Grease Filter

RANGE HOOD CONTROLS

Push button



- ① Switch on/off
- ② Low speed
- ③ Medium speed
- ④ High speed
- ⑤ Light

Operating the lights

The On/Off light button controls both lights. Press once for "ON" and again for "OFF".

Operating the blower

The "Speed" button turns the fan on and controls the fan speed and sound level for quiet operation. The speed can be changed anytime during the fan operation by pressing the desired blower speed button.

The "OFF" button turns the fan off.

Disclaimer: Control panel may vary from model to model; models may not have these controls at all. This is a general type of control panel.

RANGE HOOD CARE

Cleaning

IMPORTANT: Clean the hood and grease filters frequently according to the following instructions. Replace panel filters before operating hood.

Exterior Surfaces

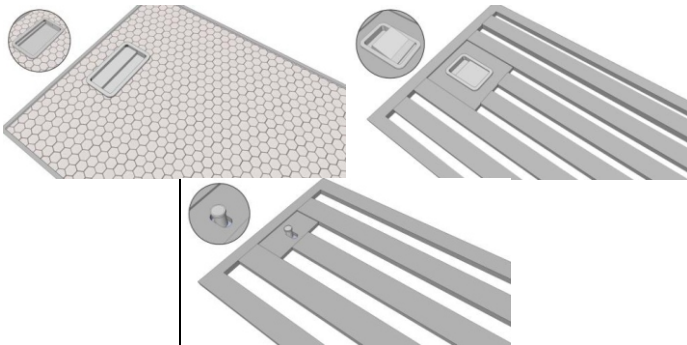
To avoid damage to the exterior surface, do not use steel wool or soap-filled scouring pads. Always wipe dry to avoid water marks.

Cleaning Method

Use liquid detergent soap and water, or all-purpose cleanser. Wipe with damp soft cloth or non-abrasive sponge, then rinse with clean water and wipe dry.

Grease Filter and Baffle Filter

1. Remove the filter by pulling the spring release handle and then pulling down the filter.



2. Wash metal filters as needed in dishwasher or hot detergent solution.
3. Reinstall the filter by making sure the spring release handles are toward the front. Insert aluminum filter into upper track.
4. Push the spring release handle.
5. Push up on metal filter and release handle to latch into place.

Replacement

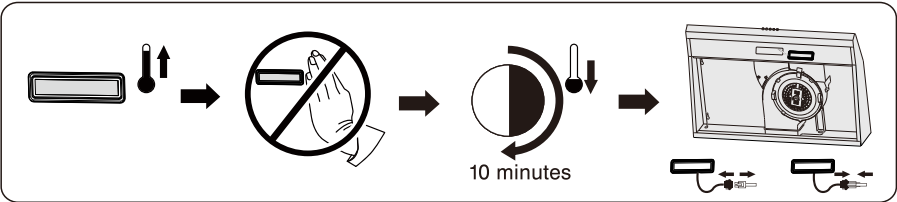
LED lamp Replacement

1. Switch the unit off and unplug the appliance.

2. Replace with the same type and rated LED lamp

- Lamp type: L10 / L14;
- Shape description: rectangle;
- Rated wattage of the intended lamp: 2W;
- Max wattage of a potential replacement lamp: 2W;
- Rated voltage or voltage range of lamp or for pre-heat starting
fluorescent lamp starter replacement detail: 220-240V;
- Nominal dimension of lamp: 34.5 * 120mm.

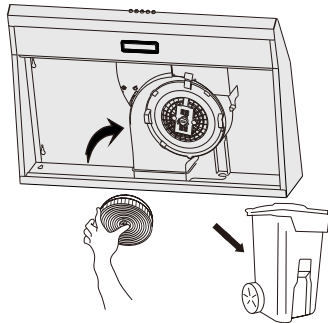
The LED Lamp may be hot, leave it 10 minutes before replacement.



Carbon filter life time: Suggest changing to new one every 3 months (According to different kitchen condition, the life time of carbon filter might be longer or shorter than 3 months).

Installation: Fix carbon filter into the unit and turn it in clockwise direction.

Repeat the same on the other side.



Important Notice:

1. Make sure the filter is securely locked. Otherwise, it would loosen and cause abnormal noise and danger.

2. Using carbon filter would reduce the air flow of the range hood.

TROUBLE SHOOTING

| Potential Effect of Failure | Potential Cause(s) | Recommended Action(s) |
|------------------------------------|--|--|
| Lamp does not turn ON | Electronic Control does not work. Due to Over Voltage | a) Pressing any key the LCD lights up and icons are in place? Yes, Proceed with the following diagnostic sequence No, Replace the control and user interface. |
| | Non functional lamp | 1) Remove the lamp. 2) Verify the lamp to be non functional reviewing that the filament is not burned and be in correct place. 3) Replace if needed. |
| | During the hood cleaning, the motor connector has been loose and a false contact in the main harness is performed. | 1) Open the control box removing the screws. 2) Remove power supply from the hood. 3) Verify that the connector coming from the motor is well connected to the connector mounted in the plastic verifying that the locking system in the connectors is well locked. 4) If the connectors are not well connected: - Hold and press main connectors attached in the white plastic. - Push inwards the motor/lamp connectors until the locking system on connectors is well attached. 5) Connect hood to power supply and verify. |
| FAN does not work | Electronic Control does not work. Due to Over Voltage | a) Pressing any key the LCD lights up and Icons are in place? Yes, Proceed with the following diagnostic sequence No, Replace the control and user interface. |
| | During the hood cleaning, the motor connector has been loose and a false contact in the main harness is performed. | 1) Open the control box removing the screws. 2) Remove power supply from the hood. 3) Verify that the connector coming from the motor is well connected to the connector mounted in the plastic and that the locking system in the connectors is well locked. 4) If the connectors are not well connected: - Hold and press main connectors attached |

| | | |
|--|--|--|
| | | <p>in the white plastic.</p> <ul style="list-style-type: none"> - Push inwards the motor/lamp connectors until the locking system on connectors is well attached. <p>5) Connect hood to power supply and verify.</p> |
| The blower is too noisy | Filters are dirty | <ol style="list-style-type: none"> 1) Verify that the grease and/or charcoal filters are clean. 2) If they are not clean change charcoal filter, or wash grease filter and verify. |
| False contact in the connectors | During the hood cleaning, the motor connector has been loose and a false contact in the main harness is performed. | <ol style="list-style-type: none"> 1) Open the control box removing the screws. 2) Remove power supply from the hood. 3) Verify that the connector coming from the motor is well connected to the connector mounted in the plastic and that the locking system in the connectors is well locked. 4) If the connectors are not well connected: <ul style="list-style-type: none"> - Hold and press main connectors attached in the white plastic. - Push inwards the motor/lamp connectors until the locking system on connectors is well attached. 5) Connect hood to power supply and verify. |
| The hood and or the lamp does not work | A terminal or connector is loose | <ol style="list-style-type: none"> 1) Open the control box removing the 6 screws. 2) Remove power supply from the hood. 3) Verify that the connector coming from the motor is well connected to the connector mounted in the plastic and that the locking system in the connectors is well locked. 4) If the connectors are not well connected: <ul style="list-style-type: none"> - Hold and press main connectors attached in the white plastic. - Push inwards the motor/lamp connectors until the locking system on connectors is well attached. 5) Connect hood to power supply and verify. |