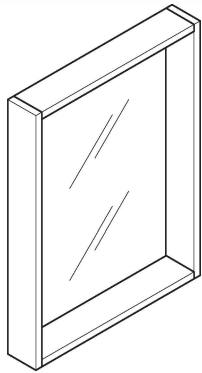
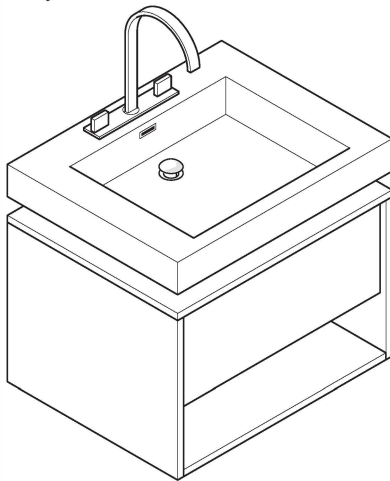
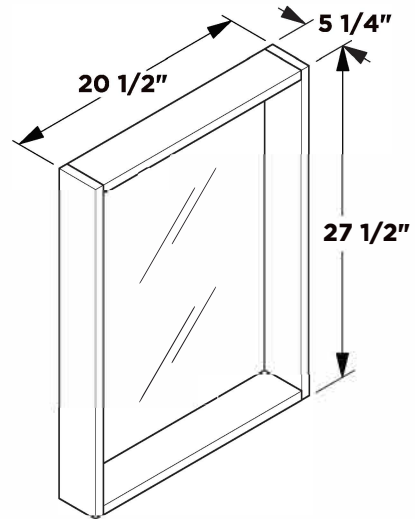


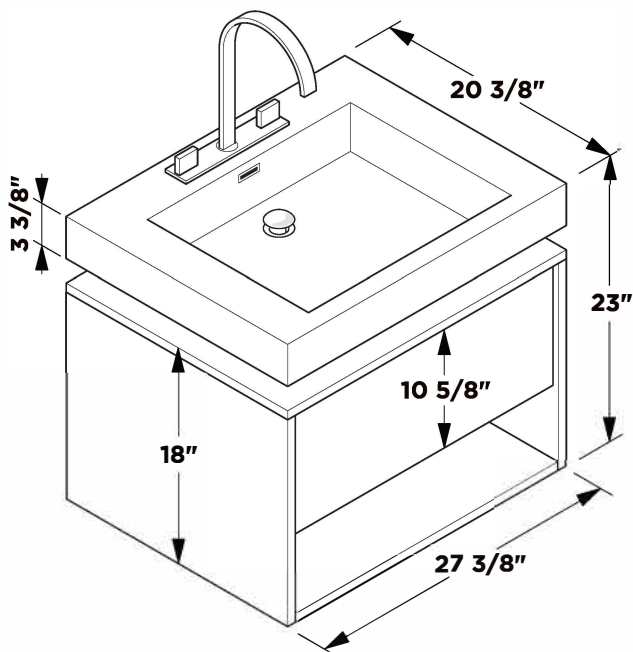
## INSTALLATION GUIDE



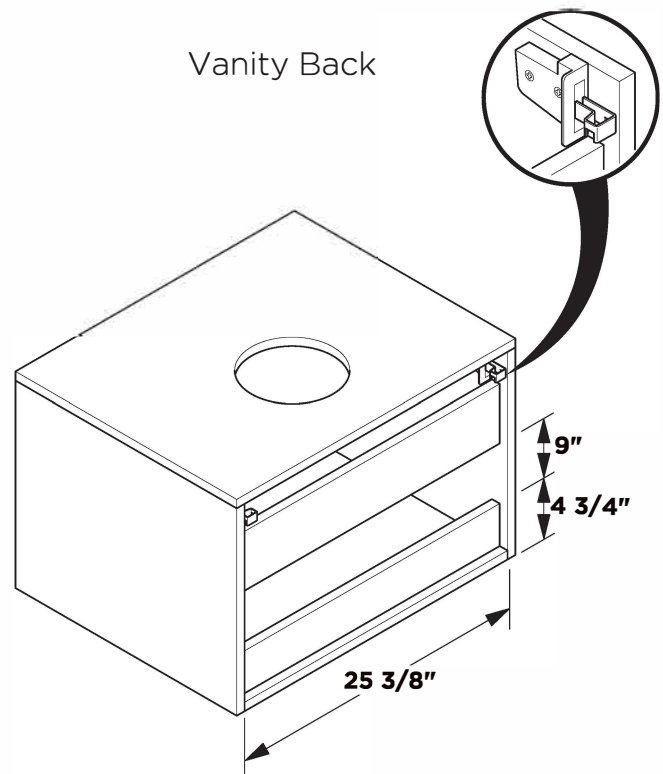
Mirror



Vanity Front

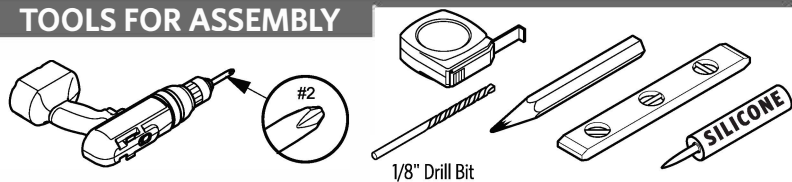


Vanity Back

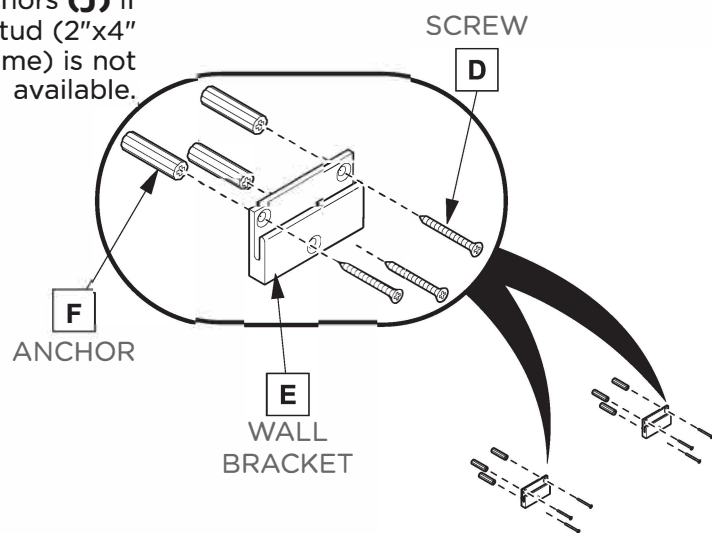


**NOTE:** ALL DIMENSIONS & SPECIFICATIONS ARE APPROXIMATE AND SUBJECT TO CHANGE WITHOUT NOTICE.

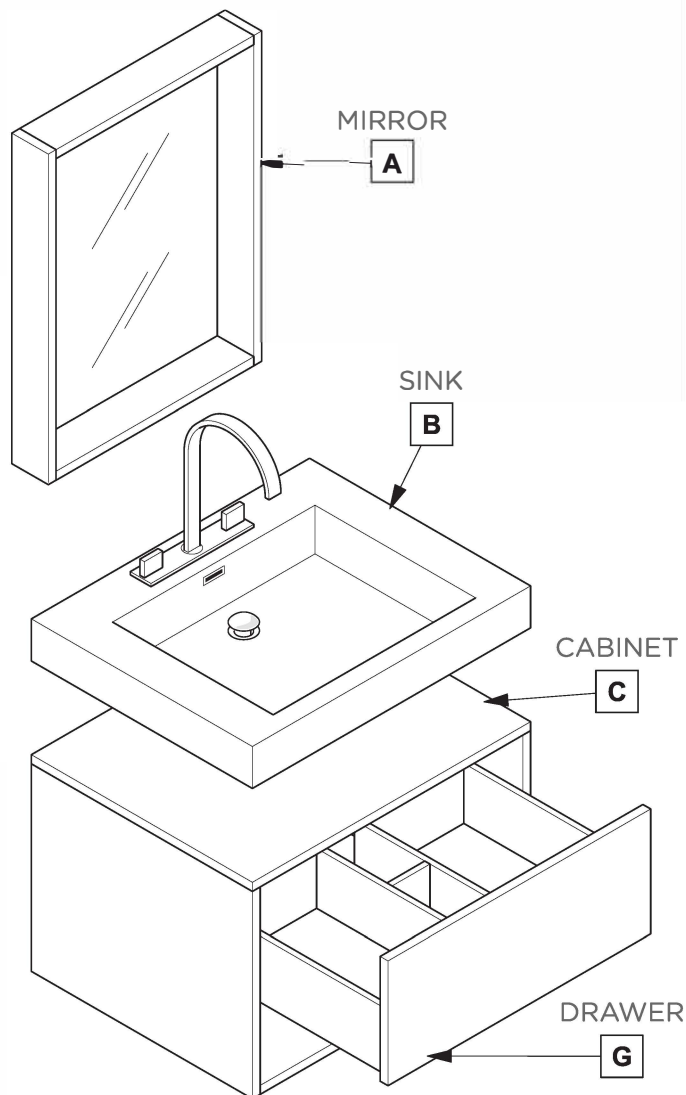
## TOOLS FOR ASSEMBLY



**\*Note:** Only use anchors (J) if stud (2"x4" frame) is not available.

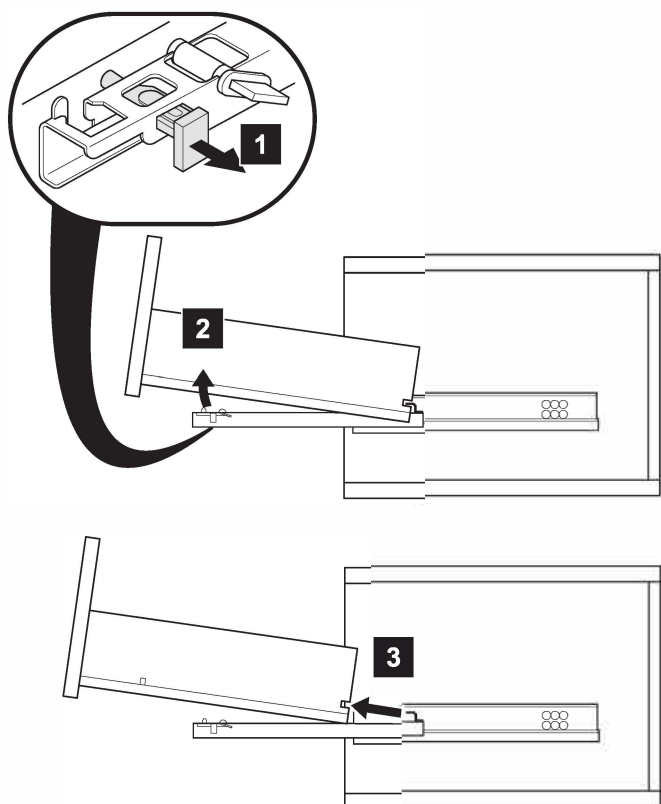


## PARTS

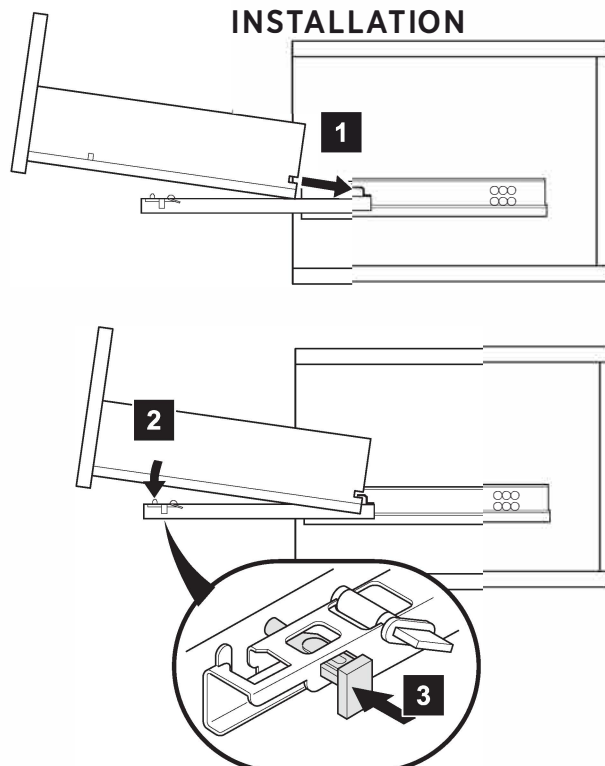


## DRAWER REMOVAL & INSTALLATION

### REMOVAL

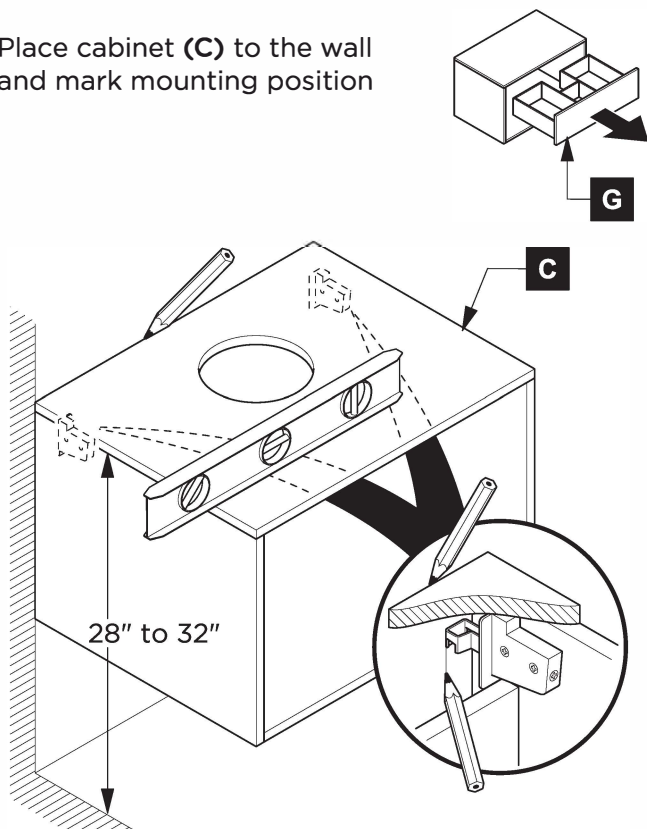


### INSTALLATION

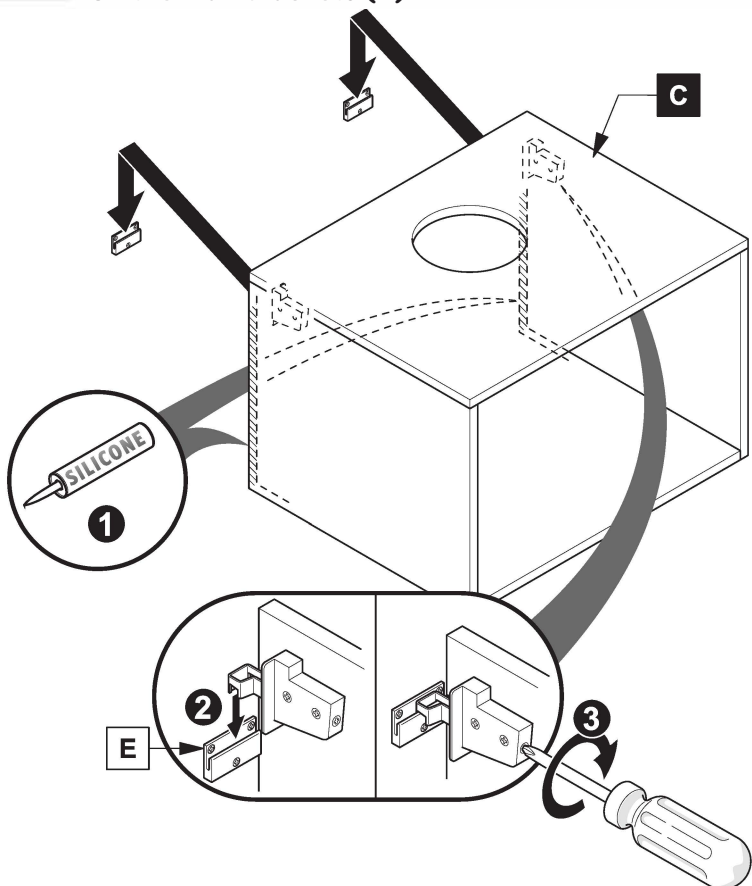


**1** Remove drawer (G)

**2** Place cabinet (C) to the wall and mark mounting position

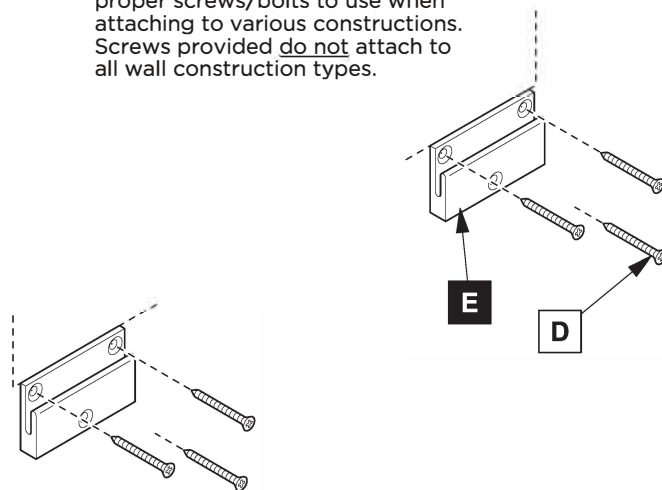


**4** Apply silicone and place cabinet (C) on the wall brackets (E)

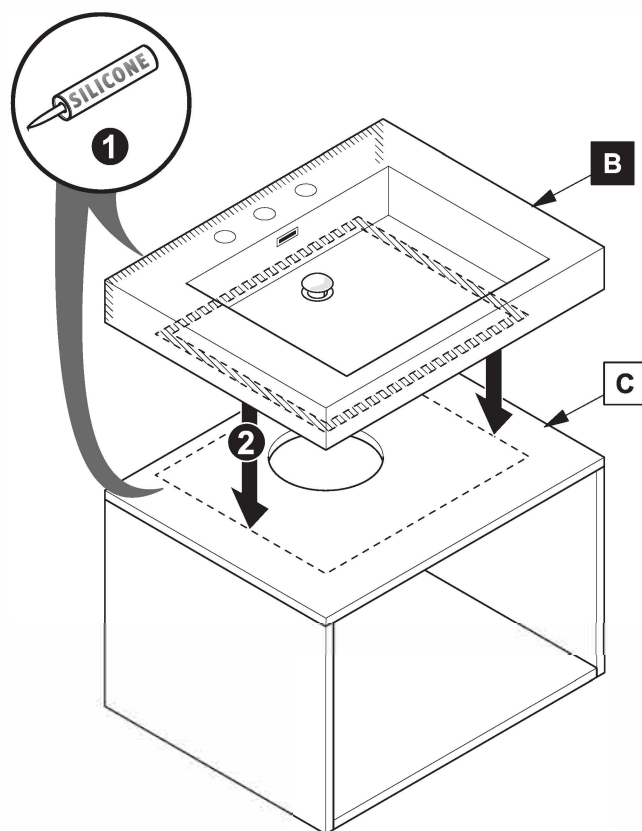


**3** Attach wall brackets (E) to the wall

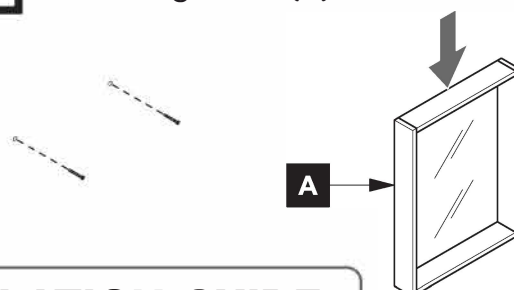
**NOTE:** Consult an expert for the proper screws/bolts to use when attaching to various constructions. Screws provided do not attach to all wall construction types.



**5** Apply silicone and place sink (B) on the cabinet (C)

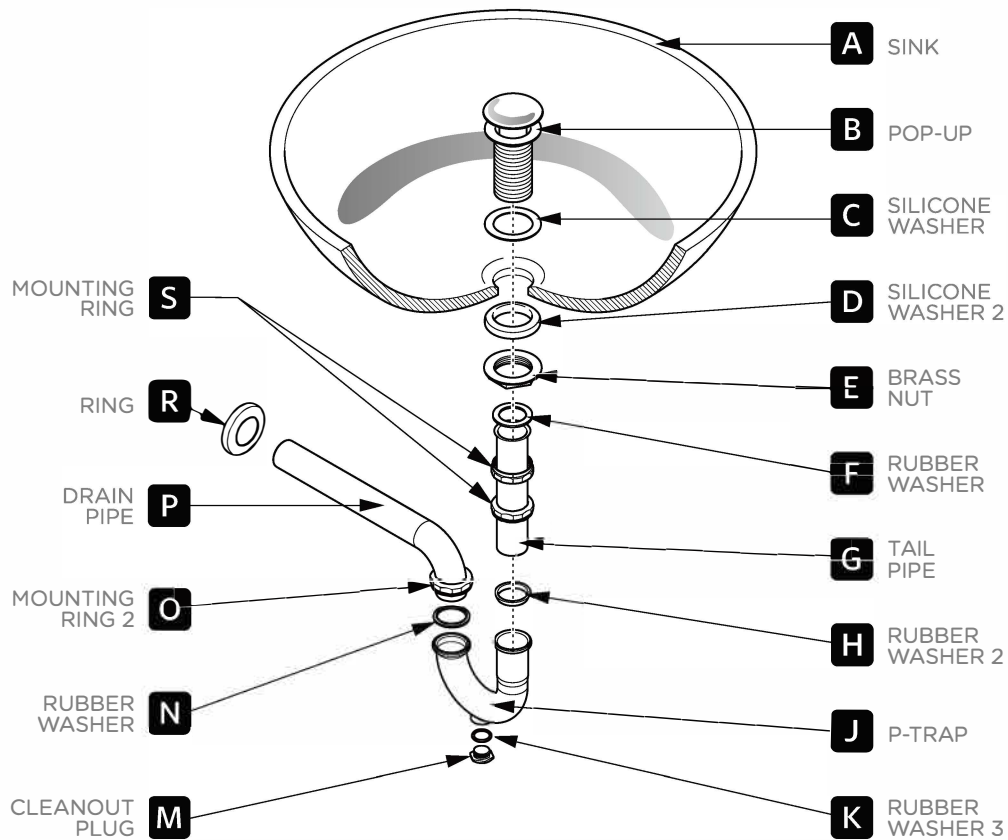


**6** Insert screws in the wall with a drill and hang mirror (A) on them.



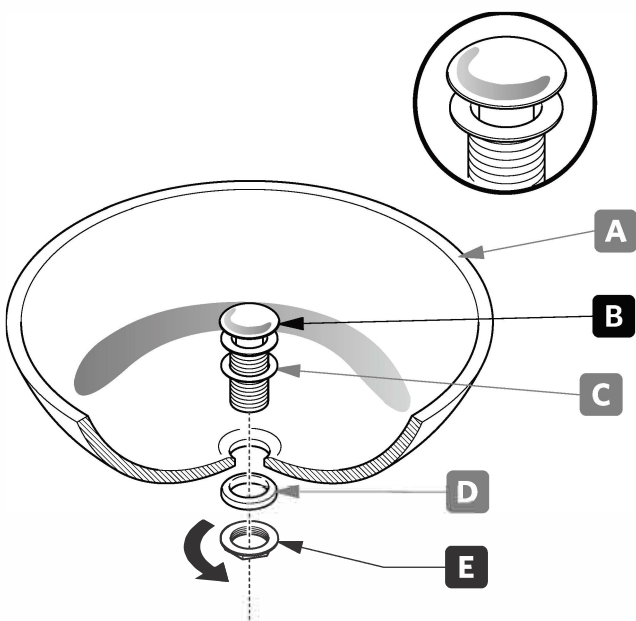
# P-TRAP & POP-UP INSTALLATION INSTRUCTIONS

Your item may appear slightly different from the illustration.



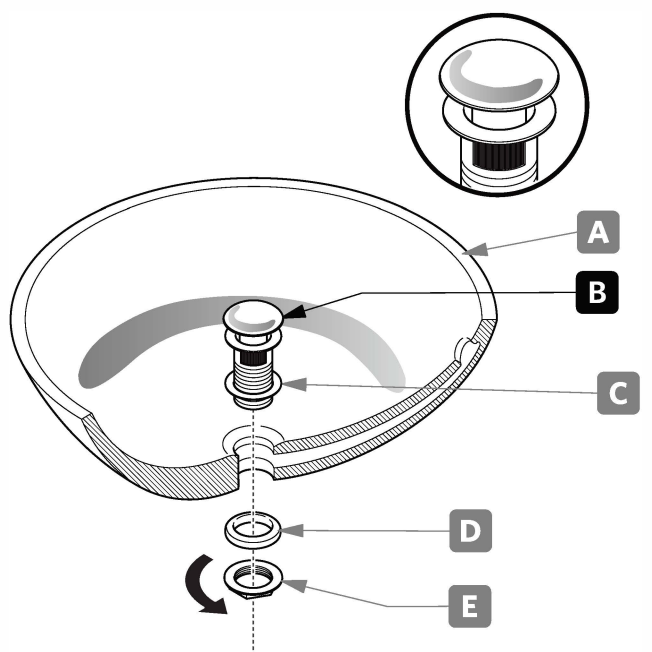
## POP-UP INSTALLATION

### FOR SINKS WITHOUT OVERFLOW



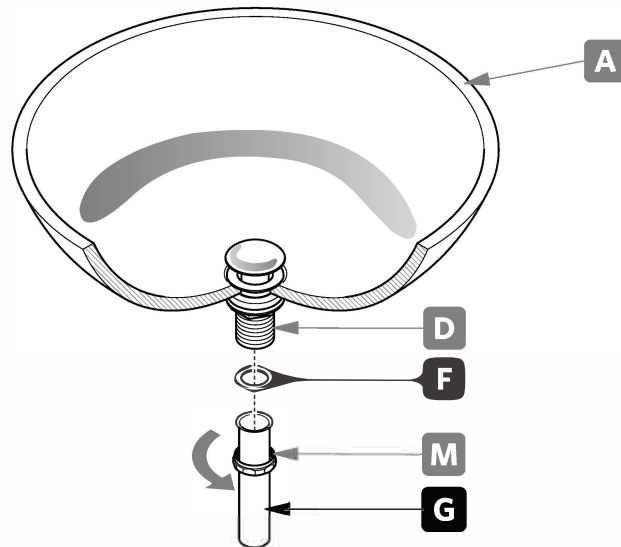
OR

### FOR SINKS WITH OVERFLOW



# P-TRAP INSTALLATION

1. Install tail pipe **(G)**.



2. Install P-trap **(J)**.

