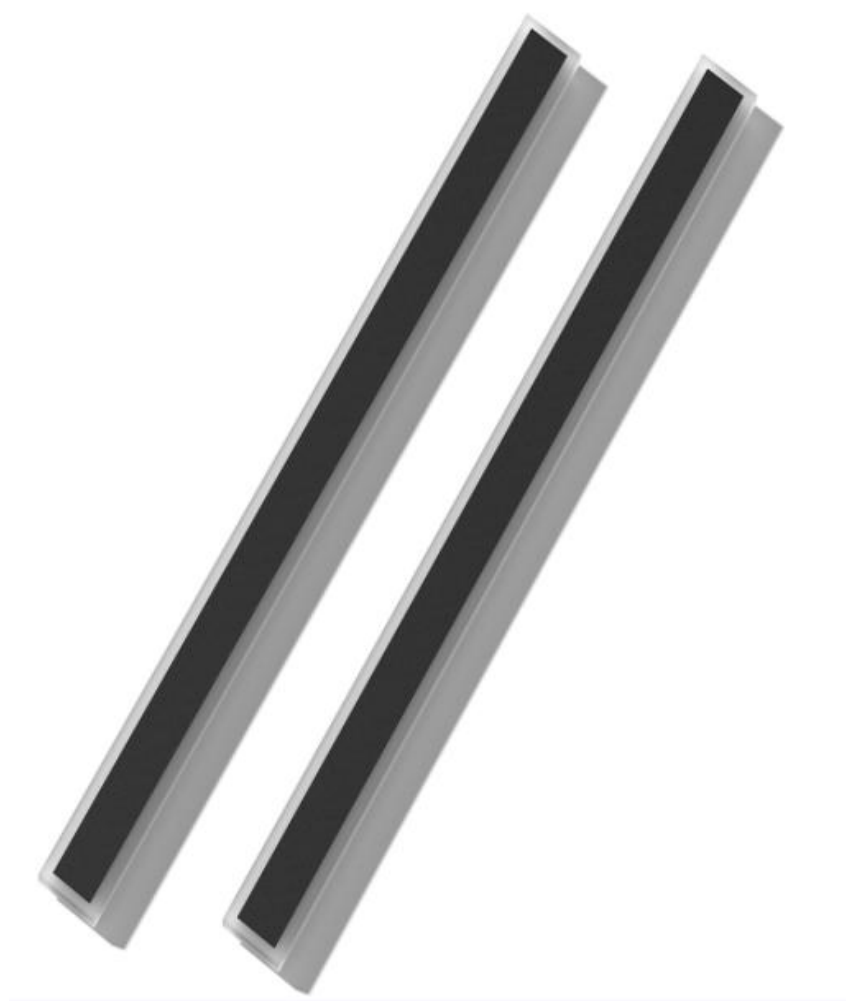


MODERN WALL LIGHT USER MANUAL



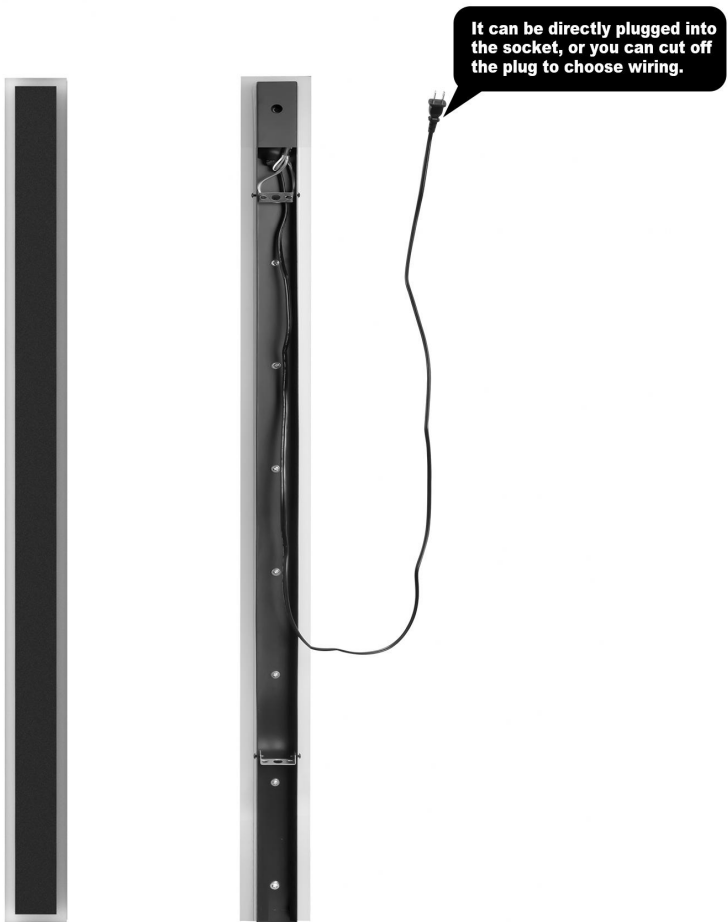
Original assembly instructions

Please read this manual carefully before using this product.

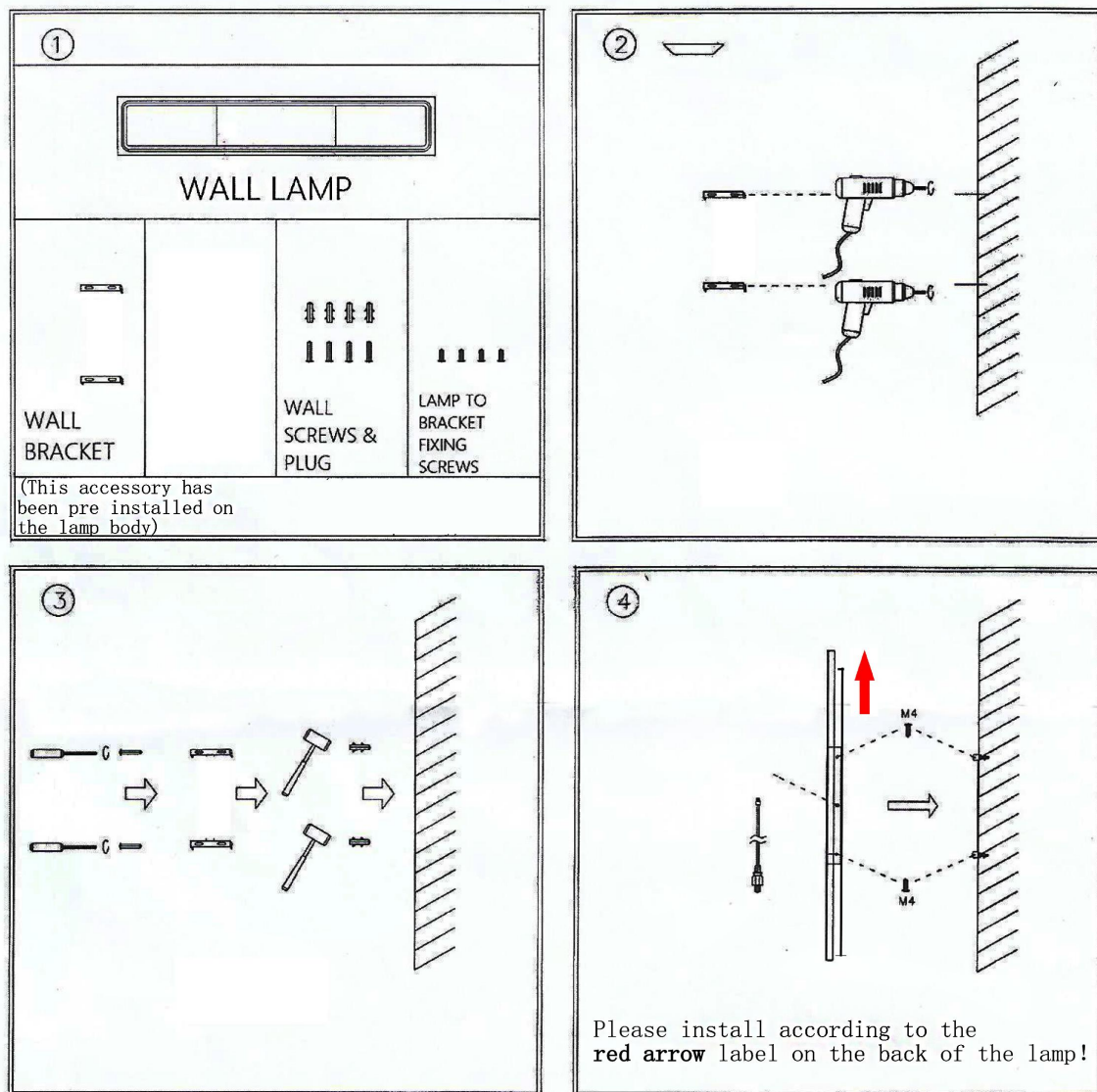
Product Introduction

- Made of high-quality metal and acrylic, porch sconces resist rust, ideal for outdoor use.
- Customize our outdoor light's color temperature, from warm to cool white or vibrant hues.
- Boasting an 85RA CRI, showcases true colors, perfect for outdoor illumination.

Name	Material	Length	Voltage	Wattage	Waterproof Level
40in Wall Light	Metal/Acrylic	100CM	110V	32W	IP65
60in Wall Light	Metal/Acrylic	150CM	110V	40W	IP65



Product Installation Diagram



Step 1: Inspect the lamp and count the number of fittings. Prepare your electric drill.

Step 2: Mark the positions for the holes on your wall and then drill.

Step 3: Hammer the wall plugs into the drilled holes to ensure a tight fit and added strength. Next, position the wall bracket over the plugs and screw the bracket into the plugs. Screws, plugs, and the wall bracket are provided.

Step 4: Attach the lamp to the wall bracket using the provided screws that are meant for lamp-to-bracket fixing. Make sure the screws are tightened securely to ensure stability and rigidity. Connect the power to the center of the lamp.

Step 5: Finally, insert the power cable, and enjoy your illuminated space.



Remove the screws on both sides of the light, Separate the bottom plate from the lamp body.



The first way to use it is to connect the power supply directly with the plug.



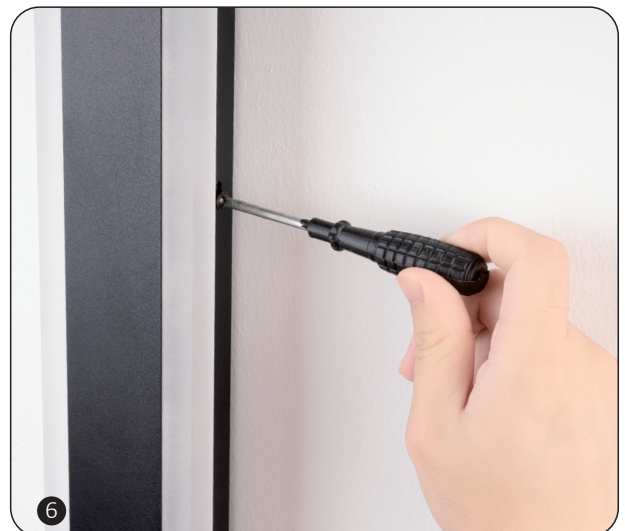
The second method of use is to use a tool to cut off the plug and separate the neutral and live wires.



Connect the wires on the light to the corresponding neutral wire, live wire and ground wire, and put them in the wire box for insulation protection.



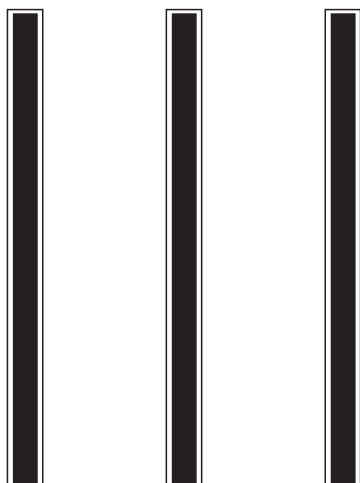
Mark the installation location, fix the installation clip on it and reinforce it.



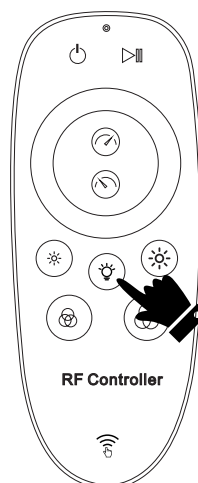
Install the lamp body and fix the screws to light up.

How to control multiple wall lights

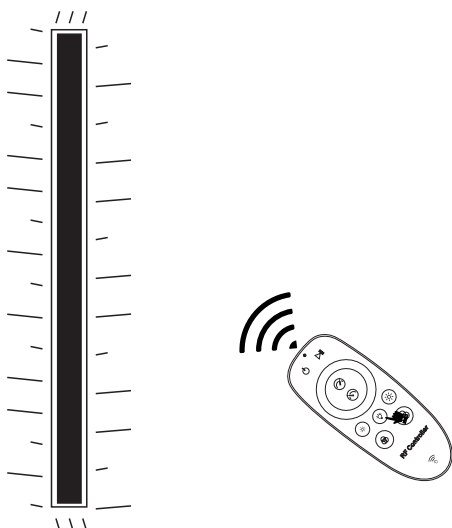
1. Turn off all wall lights in advance



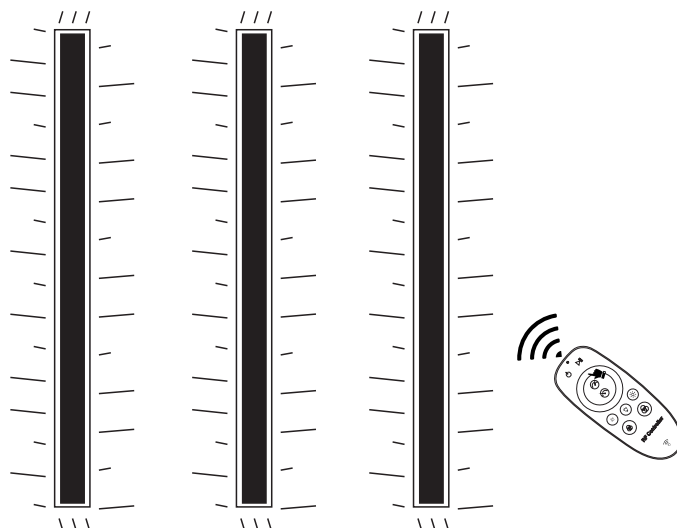
2. Press and hold the light bulb button in the middle of the remote control for 15 seconds.



3. Wait until the light flashes to decode



4. Re-open the wall light to control multiple wall lights at the same time



Remote Control Instructions

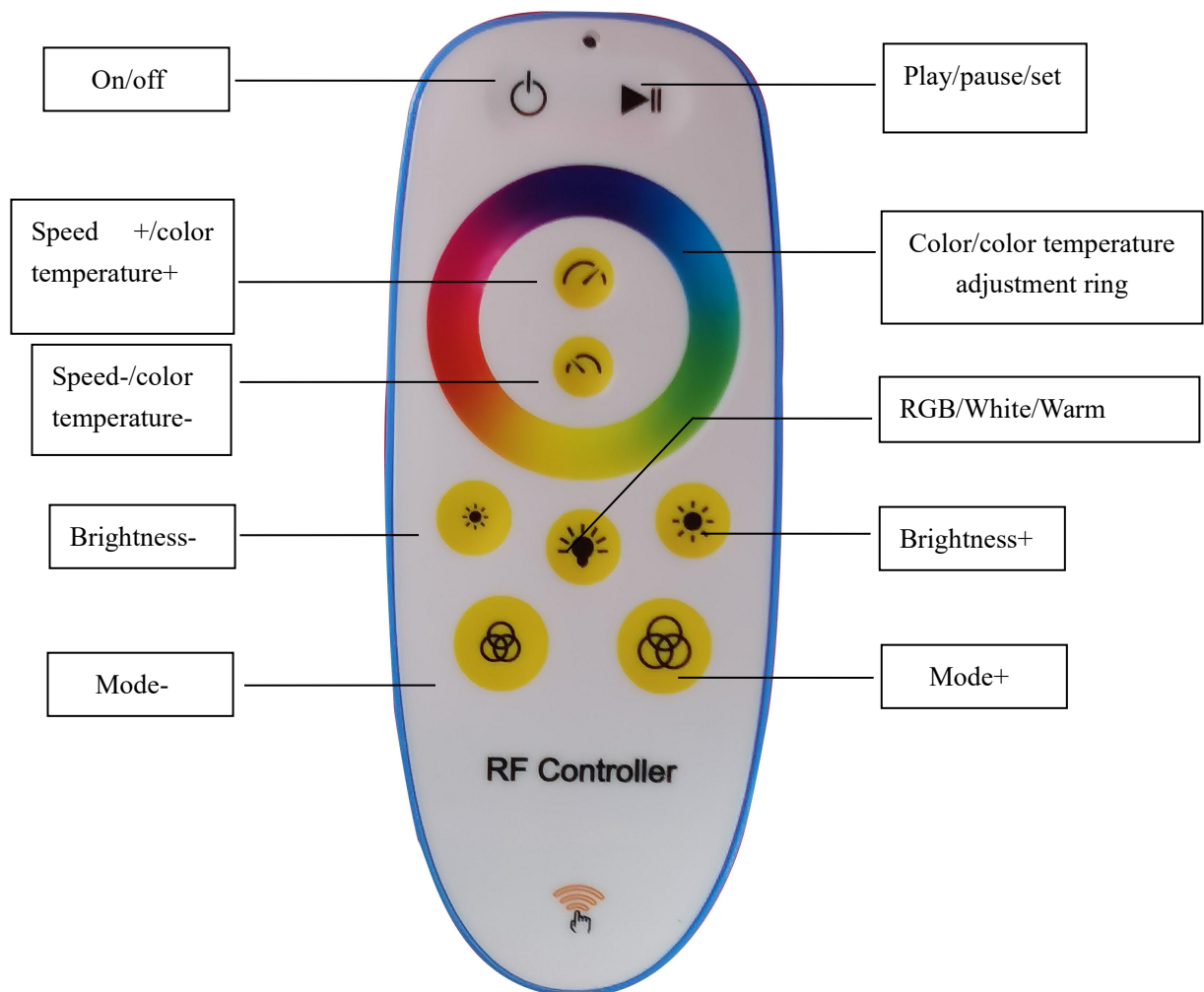
1. Basic parameters:

Effect mode: 238 kinds of lighting effects

Remote control distance: 30 meters in the open

Battery model: 3 AAA batteries (remote control batteries)

2. Remote control operation instructions:



Play/Pause: 1. Short press the pause button in dynamic mode, the light will not be paused; 2. Press the color circle first and then short touch the play button, the control panel enters the auto play mode; 3. Press and hold the play/pause button for more than 5 seconds to enter the setting mode in the shutdown state, the light strip is displayed in white, and the line sequence and points of the light strip can be adjusted at this time;

Speed+/color temperature+: 1. Short press in the dynamic mode of the color light mode to increase the light change speed; 2. In white lighting mode, short press to adjust the color temperature upwards

Speed-/color temperature-: 1. Short press in the dynamic mode of the color light mode to reduce the light change speed; 2. In white light illumination mode, short press to adjust the color temperature downwards;

Brightness +/-: 1. The brightness of the light can be added or subtracted in both color light and white light modes; 2. Short press in the setting state to adjust the light strip line sequence;

Mode +/-: The mode can be switched up and down in both color light and white light modes;

Color/color temperature adjustment ring: 1. Short press or slide the color ring in the color light state to adjust the color of the light strip to the corresponding color Color; 2. In the white lighting mode, short press or slide the color ring to adjust the color temperature of the light strip;

Light mode switching key: 1. Short press in the power-on state to cyclely switch between colored lights and white light illumination modes; 2. Long press in any state will perform code matching and clearing operations; Auto play function: first press the "color adjustment ring" and then press the "play button" to loop playback from the first effect;

Adjust points function: first press the "on/off" button to turn off, in the off state, long press the "play/pause" button for 5 seconds to enter the setting state (bright white light), then press "speed +" and "speed -" To adjust the number of points, after adjusting, press the "on/off" button to save and exit;

Line sequence adjustment function: first press the "on/off" button to turn off, in the off state, long press the "play/pause" button for 5 seconds to enter the setting state (bright white light), then press "brightness +" and "brightness -" to adjust the line sequence, display R (red) G (green) B (blue) from bottom to top to complete the adjustment, press the "on/off" key to save and exit;

Remote control code matching/clearing function: In any case, long press the "light mode switch button" for 5 seconds to clear and match the controller cyclically. When the code is successfully coded, the blue light of the light bar will flash five times quickly. At this time, only this remote control can control the controller. When the code clearing is successful, the yellow light of the light bar flashes slowly five times, and all the same type of remote control can remotely control the controller, and it is in the code state;

FAQ QA

Q: How to switch between warm and cold light modes?

A: Use this button



on the remote control to switch between warm and cold light and RGB modes; after switching between warm and cold light modes, the other buttons only have the function of adjusting light and shade and color temperature.

Q: Can the remote control control multiple wall lights at the same time?

A: Multiple wall lights can be controlled at the same time, but the distance between each wall light cannot be too far.

Q: How to connect the wall lamp to the power supply?

A: There are two ways to use it; the first one is to plug it directly into the socket; the second one needs to remove the plug, separate the neutral wire and the live wire, and connect it to the connector.