
OPERATIONS MANUAL

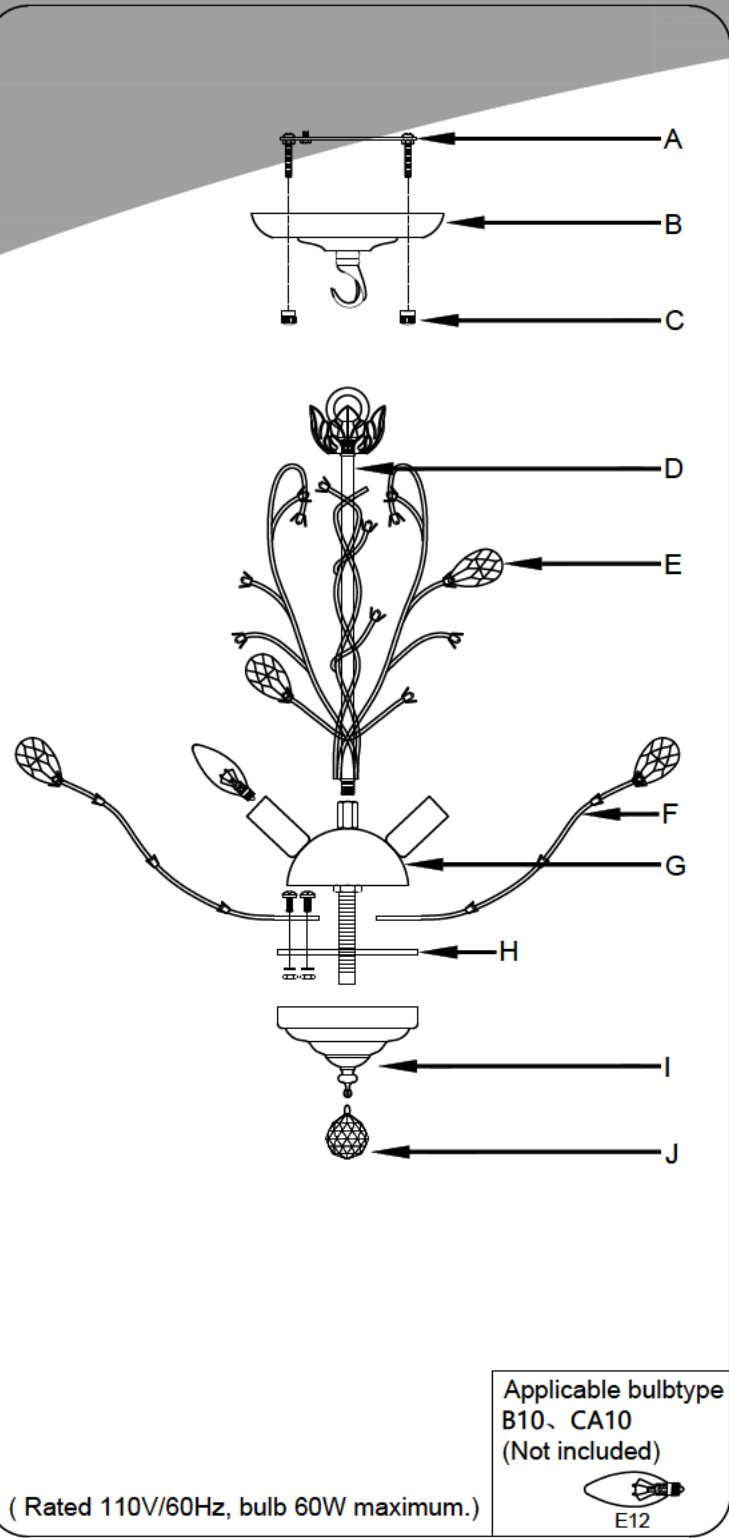


Assembly & Installation Instructions

Warning: If any special control devices are used with this fixture, follow the instructions carefully to assure full compliance with N.E.C.requirements. If there are any questions, contact a qualified electric contractor.

Warning: California Residents Proposition 65
This product contains lead, a chemical known to the state of California to cause cancer and birth defects or other reproductive harm. Do not place the product in your mouth. Wash your hands after handling this product.

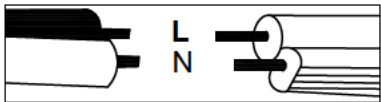
Caution: It is highly recommended to get an electrician to install this light. Please make sure to turn the electricity off at the main circuit breaker before beginning installation. All glass is fragile.Use care when handling glass component(s)and/or lamp(s).



WIRE CONNECTION DIAGRAM

Wires meeting safety standards are required to connect the electrical circuit.

CAUTION: Risk of fire



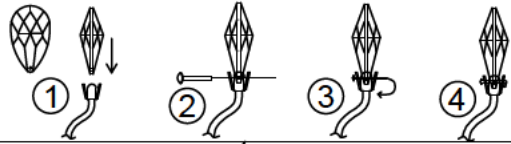
Please read all instructions carefully. Before you proceed to install, make sure that the power supply is turned off and remains off until installation is completed.

PARTS INCLUDED

Code	Part Description	QTY
A	Mounting Bracket	1
B	Canopy	1
C	Cover Nut	2
D	Central Pipe	1
E	Crystal	75
F	Twigs	7
G	Lamp Body	1
H	Metal Sheet	1
I	Decorative Cover	1
J	Crystal Ball	1

Assembly and Installation Steps

The steps of hanging crystals.



Step 5

Put the nails through first and bend them

Step 4

Screw together

Step 2

Screw together

Step 3

Screw together

Step 1

unscrewit

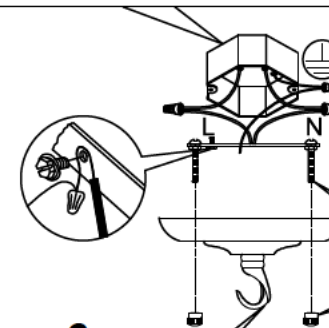
Step 7

7A. Lock the crossbar to the junction box of the ceiling by using 2 pcs of 5/32 screws in the accessories bag.

7B. Connect the wires. The hot/positive wire (+) has an "L" label on it. The other one is the negative wire (-).

And the bare cooper is the ground wire.

7C. Attach the canopy to the ceiling with screws



Step 8

Screw together

Step 6

Screw together

Step 9

Install 4 E12 bulbs
Screw together
(Not included).

Step 10

Screw together