

Aquarium Installation Instruction Manual

I. Pre-installation of Air Tube in Tank Body



1. Take the air tube, and pass it through the reserved hole on the top of the aquarium tank.
2. After the air tube is in place, first insert the steel sleeve, then pull back the tube to complete pre-fixation.

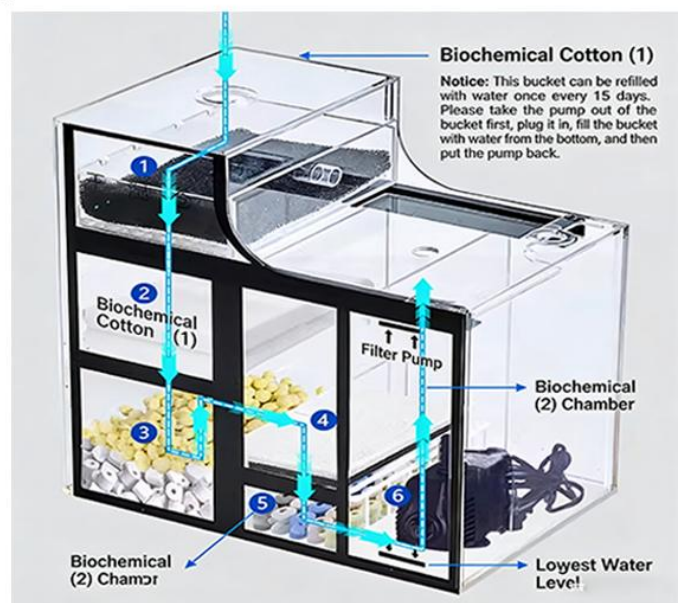
2. Pipeline System Installation



1. Water change outlet installation: Put a locking ring on the outlet first, hold the tank firmly, push the outlet up into the installation position, and tighten the locking ring to fix it.
 2. Pump corrugated tube installation: Connect the corrugated tube to the water pump port in the middle of the tank, push it all the way in, then add a locking ring to lock it.
 3. Take the water pump out of the box, align the threaded end with the corresponding port of the tank, and screw it into place to lock.
- Connect the water pump to the pre-installed corrugated tube in the middle, push it all the way on, and the water pump installation is completed.

3. Installation of Oxygen Pump

1. Box alignment: Place the dry-wet separation filter box aligned with the corrugated tube and the reserved hole on the tank cover.
2. Filter media loading: Put in the nano filter media first, then the bracket to hold it, followed by the black sponge, and then the filter wall (you can add more filter wall if needed).
3. Inner box and pump fixation: After placing the inner box, put the pump into the middle hole, make sure it is secure and does not touch the tank glass.

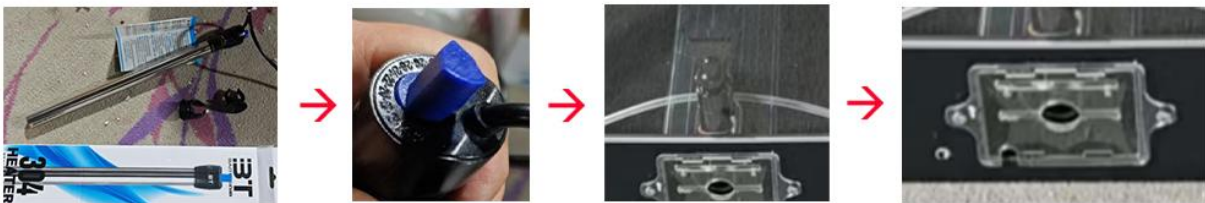


4. Air Pump and Air Tube System Installation



1. Take out the air pump, matched air tube and accessories from the box, do not remove the T joint.
2. Check valve installation: Make sure the arrow on the check valve points upward, and push it into the air tube to complete the connection.
3. Tube cutting and T joint connection: Take the shorter tube, fold it and cut it with a blade. Connect one side of the cut tubes to each end of the T joint, then connect the other ends of the tubes to the air pump. Long tube connection: Take the longer tube, connect one end to the remaining port of the T joint, and the other end to the check valve. The air tube system is now complete.

5. Heating Rod Installation and Temperature Setting



1. Temperature setting: For tropical fish, set the temperature to 28°C. Turn the scale on the heating rod to 28. The two extra parts are not needed and can be left out.
2. Tank installation: Put the heating rod inside the top black tube of the tank, route the wire through the reserved position, then tighten the screw. Secure it firmly with a Phillips screwdriver.

6. Electrical Control and Accessory Installation



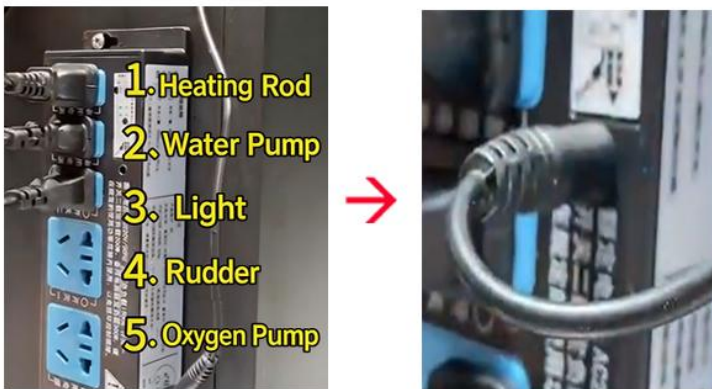
1. Temperature probe installation: Put the temperature probe into the U-shaped opening of the filter.
2. Power strip wiring: Route the power strip cable behind the tank and fix it.

7. Air Pump and Air Tube System Installation



1. Take out the tank light, align it with the two holes on the top of the tank and plug it in, then clip the light into the two slots on the top of the tank. Installation is completed.

8. Pre-power-on Preparation and Start-up Debugging



1. Wiring specification: Plug the device plugs into the power strip in the following order: ① Heating rod ② Water pump ③ Tank light ④ Rotating wheel ⑤ Air pump. Make sure all are plugged in correctly.
2. Cover the small reserved opening of the tank to ensure water can flow into the lower chamber normally.
3. Fill the lower chamber with water until the water level is about 2 to 3 cm from the top.
4. Turn on the power supply, confirm the water circulates normally after the equipment starts, and the installation is completed.

