
















Assembly Instruction

Thank you for purchasing furniture!

Before starting the installation, here are some useful suggestions:

- 1.We suggest that you spend a small amount of time reading this manual and then follow the steps to operate it one by one.
- 2.Given the size and weight of this furniture, we suggest that two adults assemble it in the carpet or padded area of the room.
- 3.This furniture installation will take approximately 1 hou.
- 4.Please do not use any tools other than those provided or recommended in this manual.
- 5.Please do not discard any packaging and instructions until this furniture is fully installed.
- 6.After the furniture installation is completed, store the remaining hardware accessories for future maintenance and use.
- 7.After unpacking, count the accessories and components according to the following list.

Hardware accessories and tools:

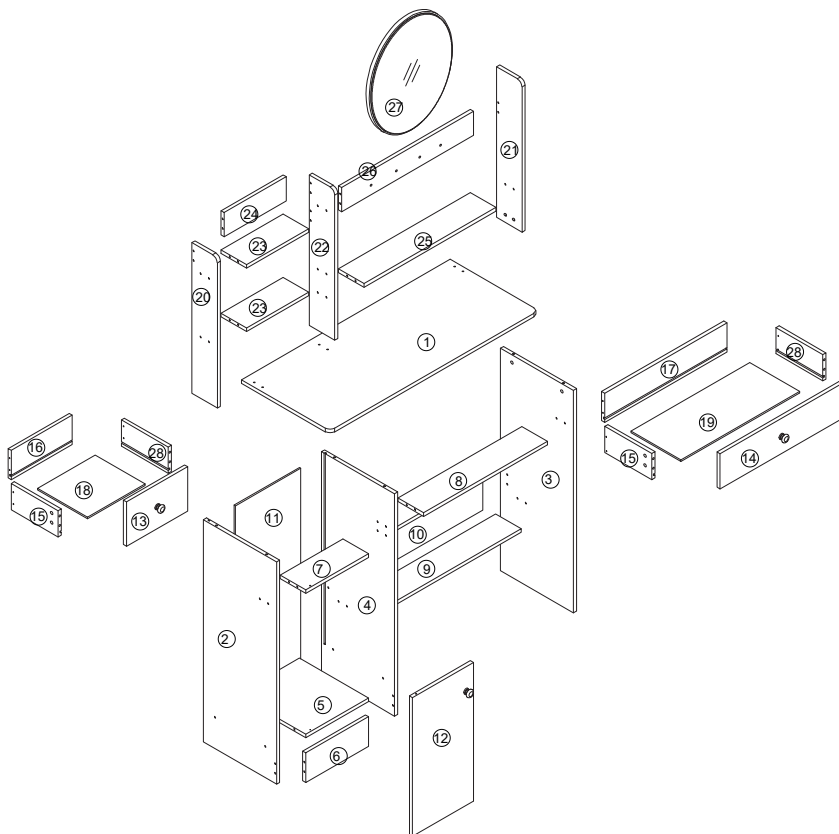
A		M6*35	x14	H		6/ 4	x1
B		12	x14	I			x3
C		10	x50	CL			x2
D		4*45	x50	CR			x2
E		3.5*20	x4	DL			x2
F		M4*18	x3	DR			x2
G		5	x2	J		3.5*12	x16
				K		3.5*40	x8

Recommended tools for use:



Parts list:

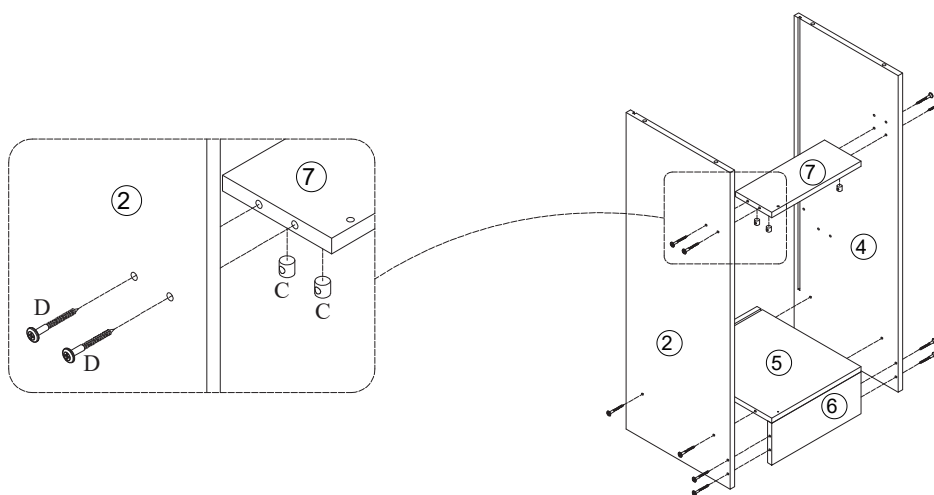
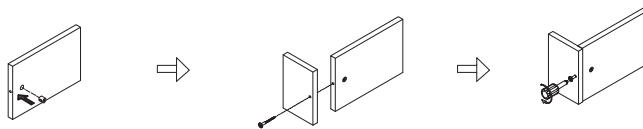
①	mesa:600*340	x1
②	lower left:738*280	x1
③	lower right:738*280	x1
④	lower middle es7d8*280	x1
⑤	Cabinet base:240*280	x1
⑥	foot board:240*98	x1
⑦	Short pull plate:240*98	x1
⑧	long pull board:474*98	x1
⑨	storage board:474*98	x1
⑩	Lower baffle:474*98	x1
⑪	backplane:633*251	x1
⑫	door panel:460*234	x1
⑬	Short drawer pull plate:234*147	x1
⑭	Long drawer pull plate:468*117	x1
⑮	Drawer side panel:180*88	x4
⑯	Short drawer tailboard:234*98	x1
⑰	Long drawer tailboard:468*98	x1
⑱	Short drawer bottom plate:219*191	x1
⑲	Long drawer bottom plate:453*191	x1
⑳	upper left:500*98	x1
㉑	upper right:500*98	x1
㉒	Upper middle side:500*98	x1
㉓	left shelf:238*98	x2
㉔	left back panel:238*80	x1
㉕	Right shelf:506*98	x1
㉖	Right back panel:506*78	x1
㉗	Mirro	x1
㉘		



Assembly Instruction

Step1

Connection method for combination hardware C and D:



Hardware:



Cx12

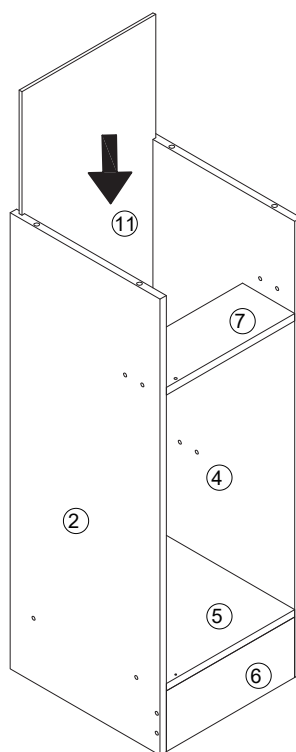


Dx12

Tools:



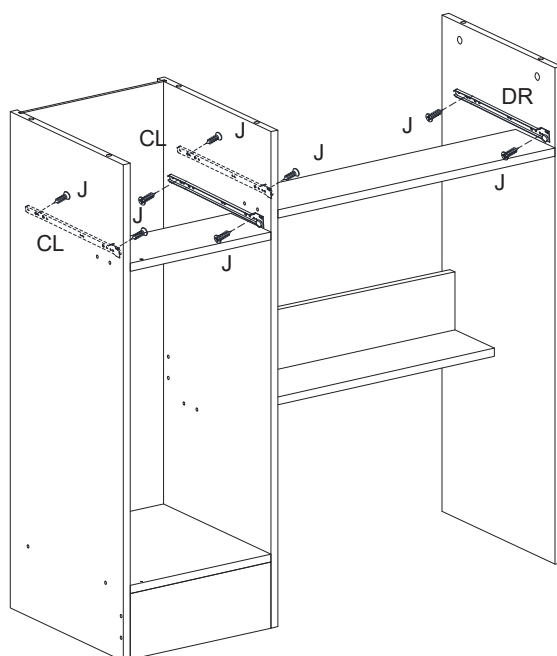
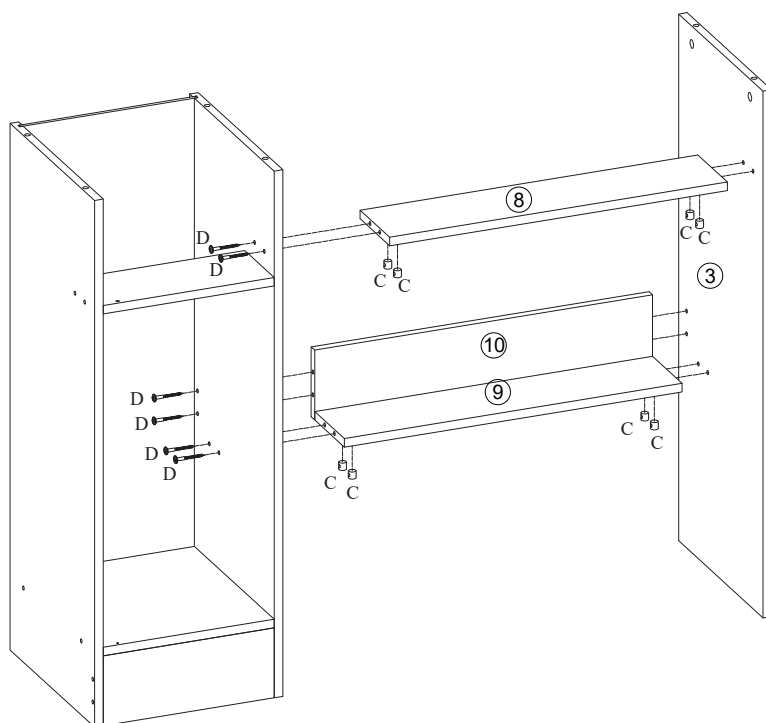
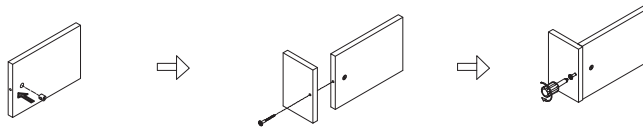
Step2



Assembly Instruction

Step3

Connection method for combination hardware C and D:



Hardware:



Cx12



Dx12



CRx2



CLx2



Jx8

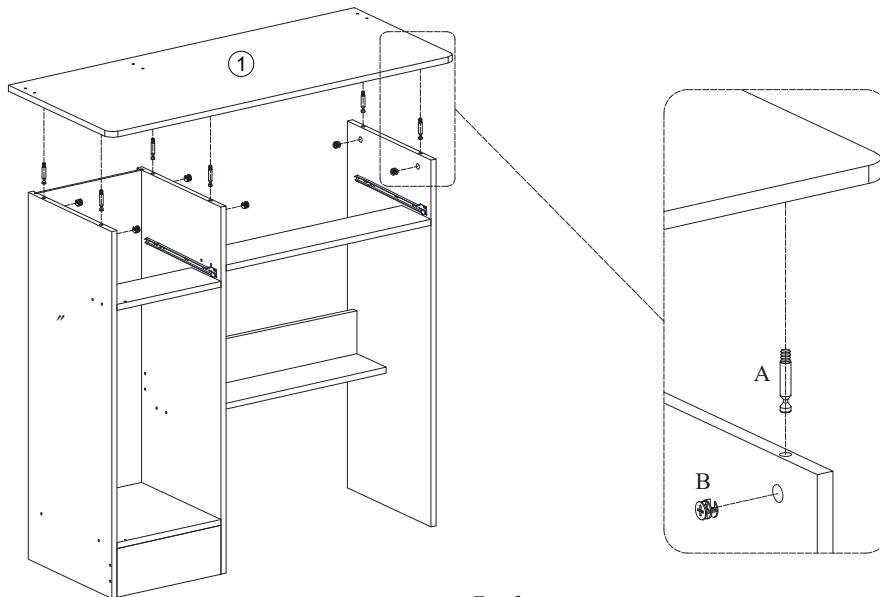
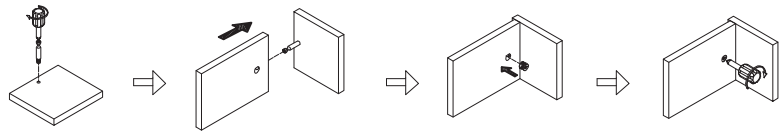
Tools:



Assembly Instruction

Step4

Connection method for combination hardware A and B:



Hardware:



Ax6



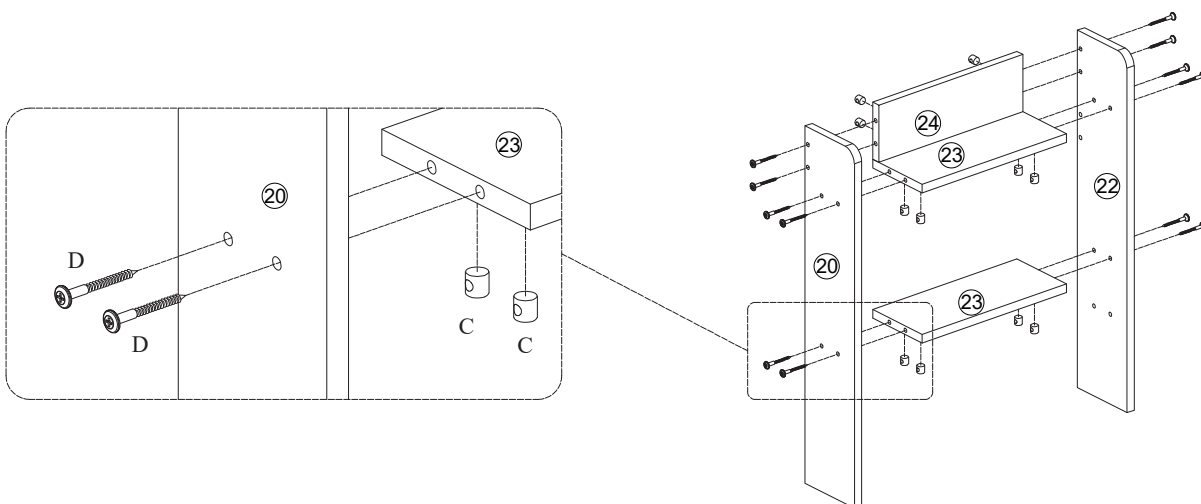
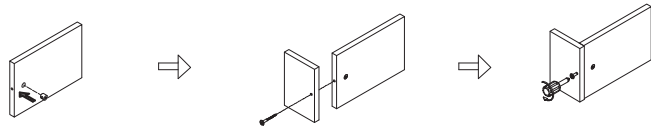
Bx6

Tools:



Step5

Connection method for combination hardware C and D:



Hardware:



Cx12



Dx12

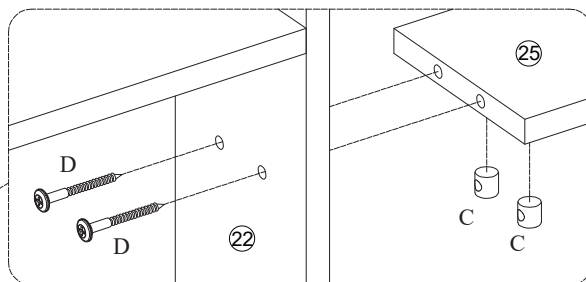
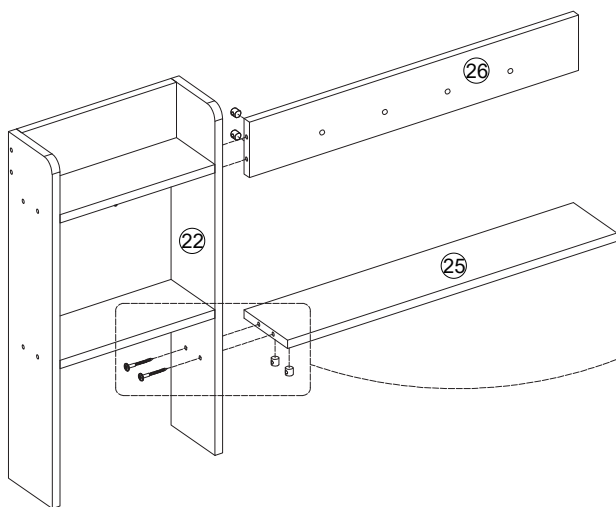
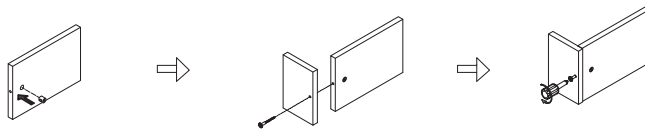
Tools:



Assembly Instruction

Step6

Connection method for combination hardware C and D:



Hardware:



Cx4



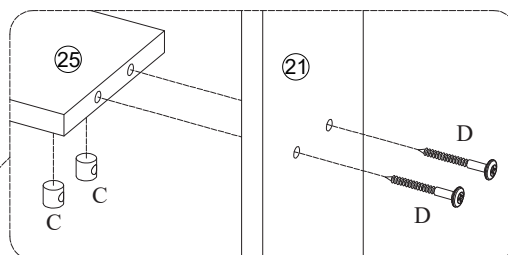
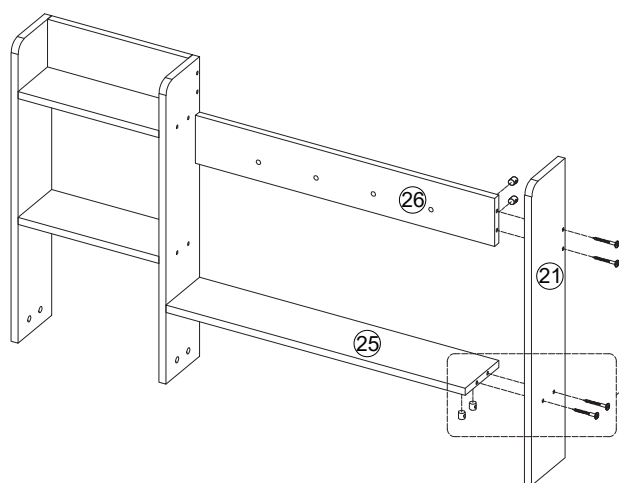
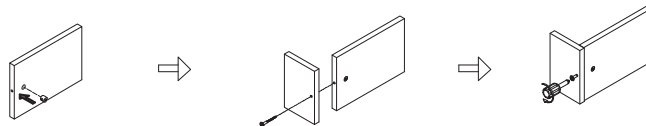
Dx4

Tools:



Step7

Connection method for combination hardware C and D:



Hardware:



Cx4



Dx4

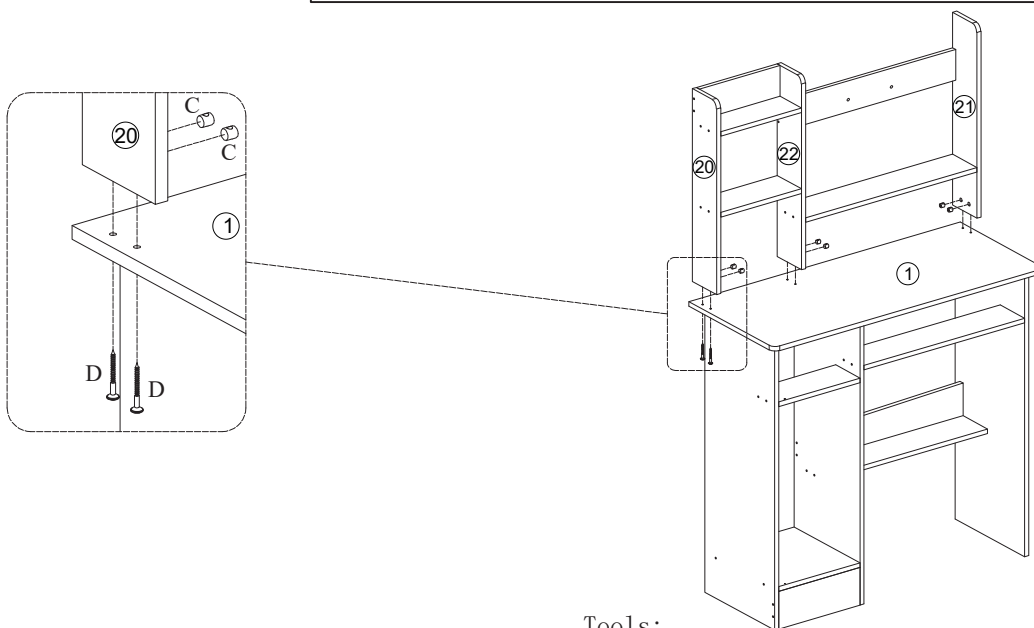
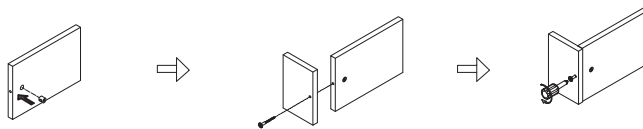
Tools:



Assembly Instruction

Step8

Connection method for combination hardware C and D:



Hardware:



Cx6

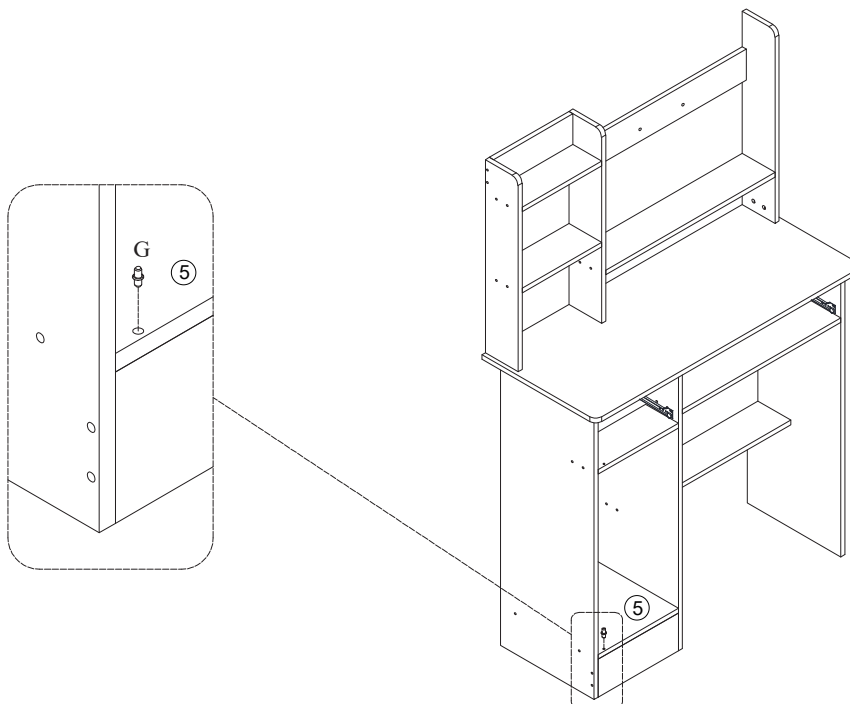


Dx6

Tools:



Step9



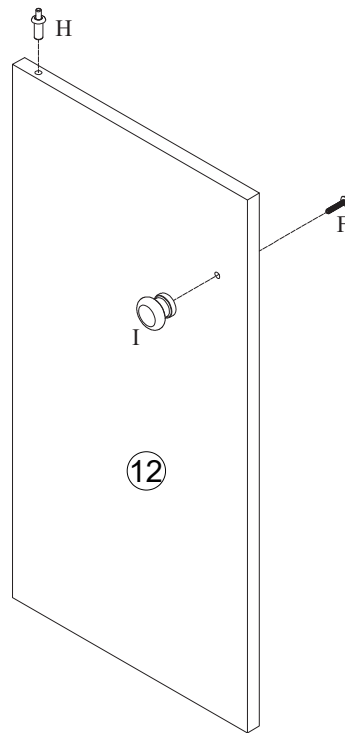
Hardware:



Gx1

Assembly Instruction

Step10



Hardware:



Fx1



Hx1

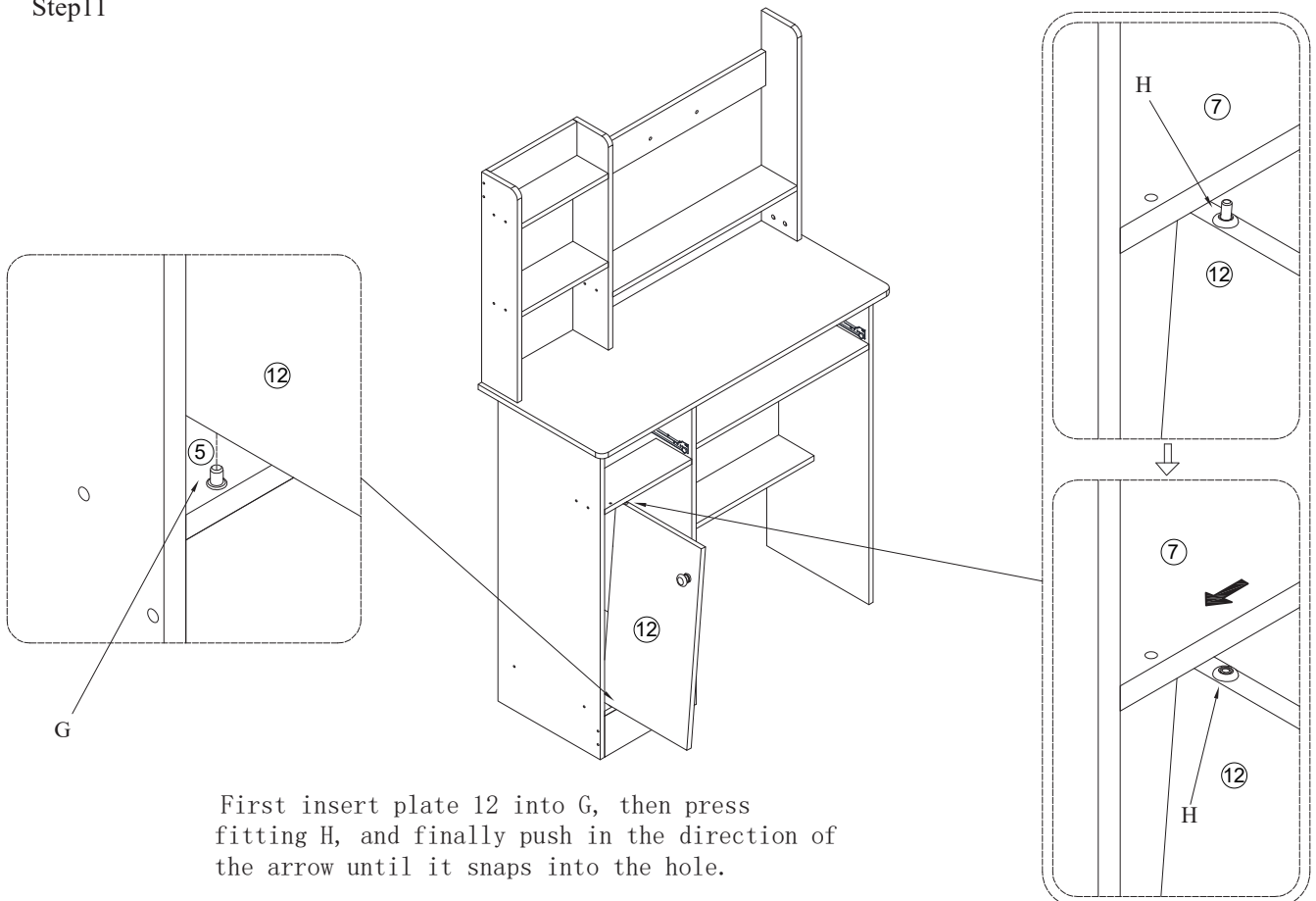


Ix1

Tools:



Step11

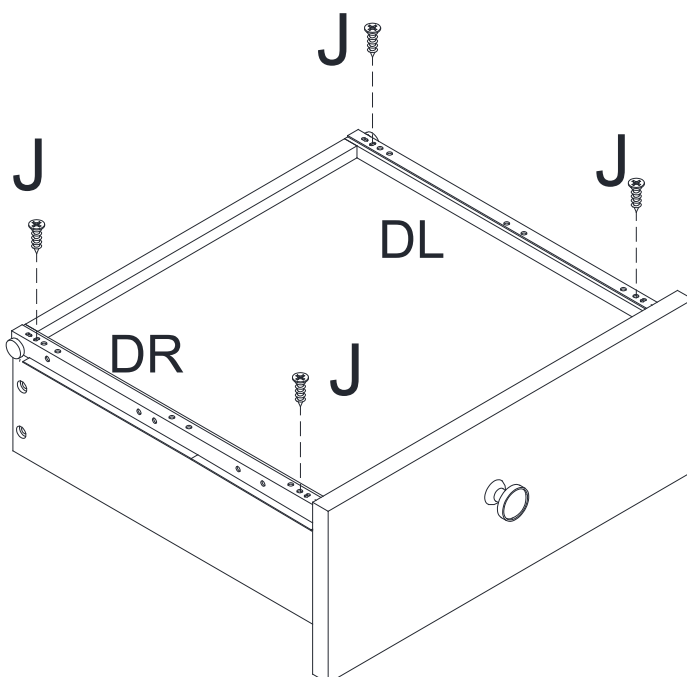
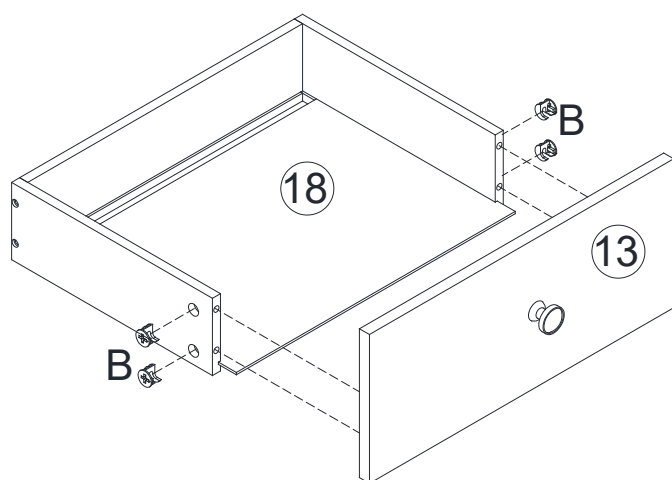
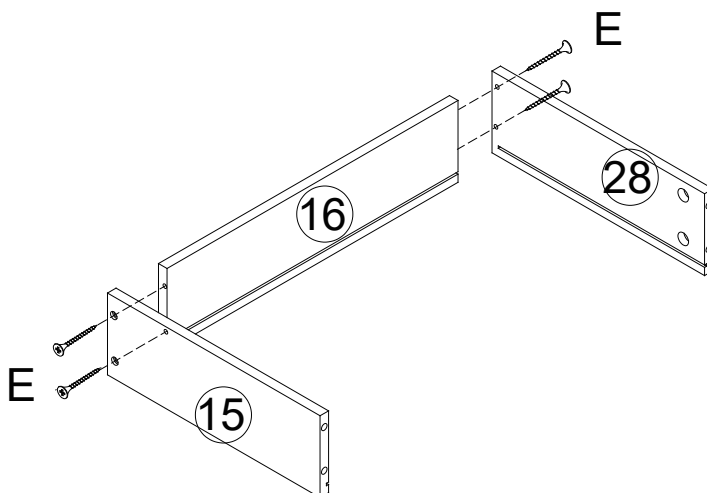
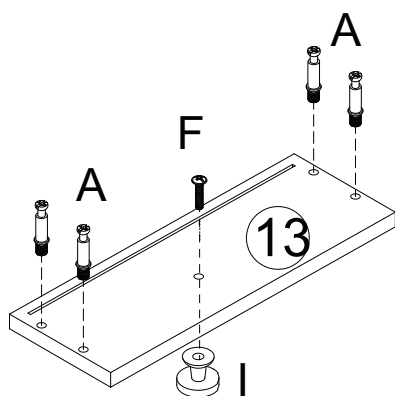


First insert plate 12 into G, then press fitting H, and finally push in the direction of the arrow until it snaps into the hole.

Assembly Instruction

Step12

Tools:



Hardware:



Ax8



Bx8



Fx1



Ix1



DLx1



DRx1



Jx4

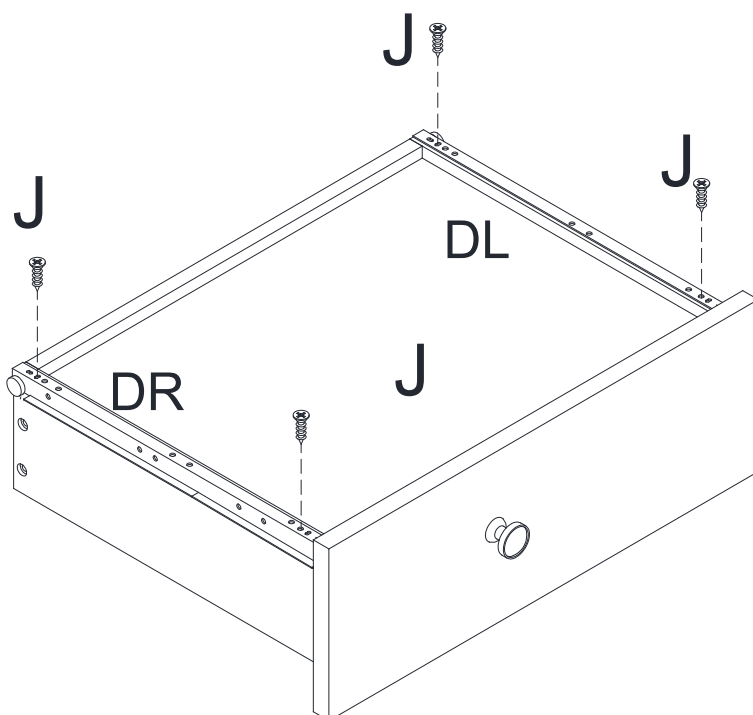
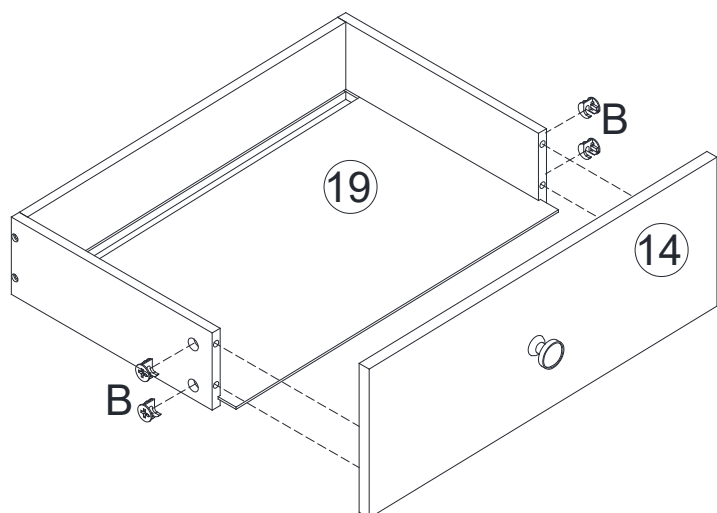
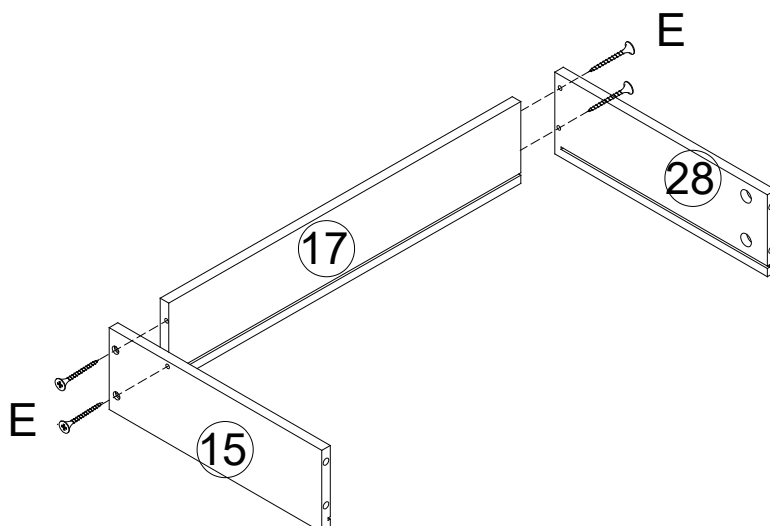
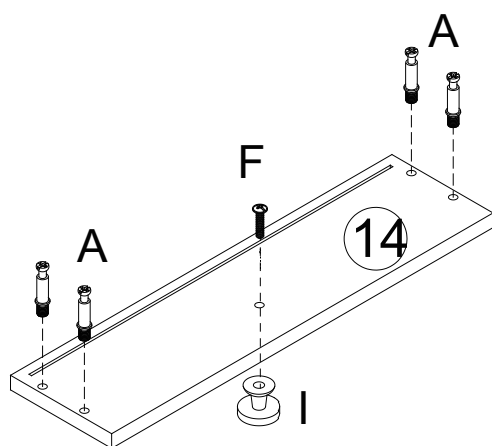


Kx4

Assembly Instruction

Step13

Tools:



Hardware:



Ax8



Bx8



Fx1



Ix1



DLx1



DRx1



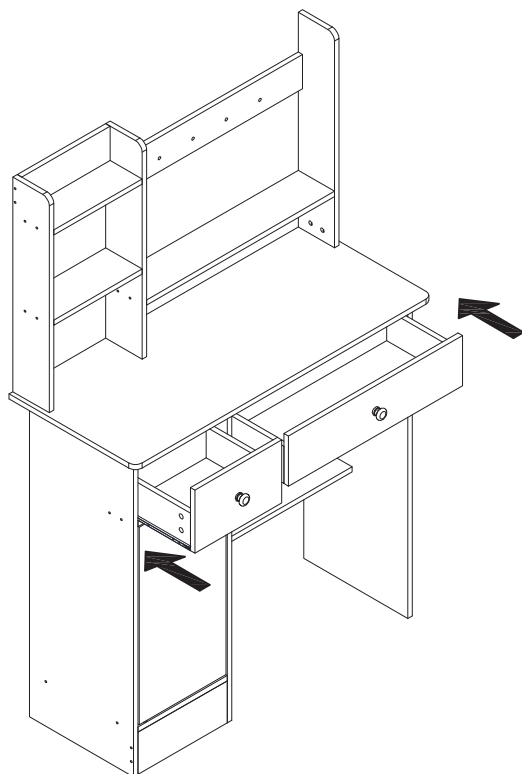
Jx4



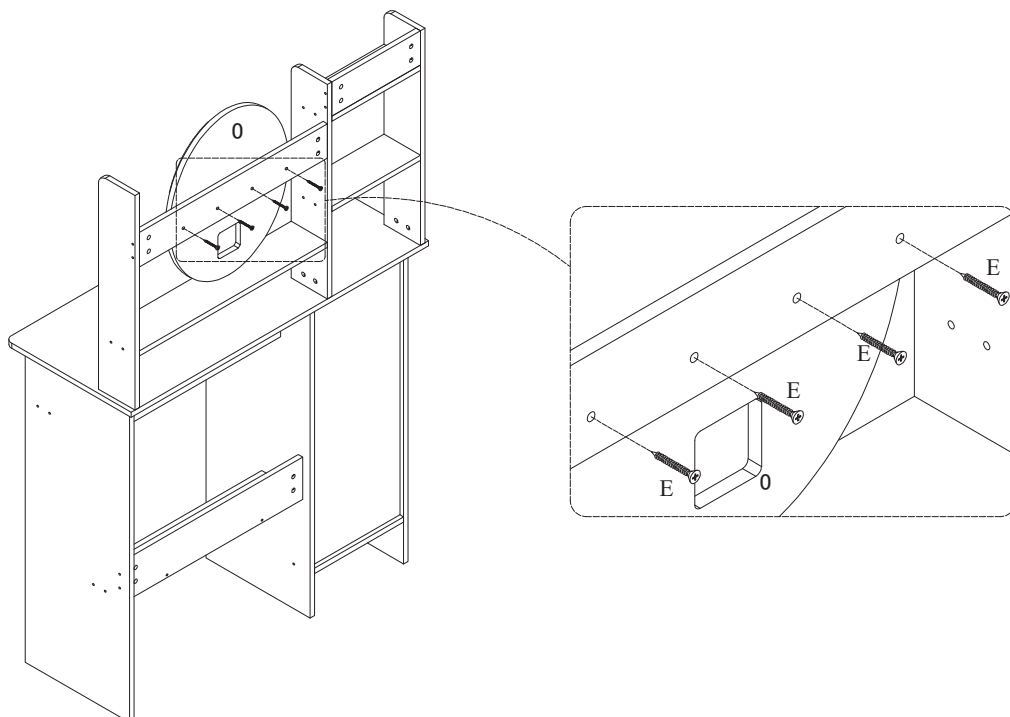
Kx4

Assembly Instruction

Step14



Step15



Hardware:



Ex4

Tools:



Step16

