

## COFFEE TABLE

## ASSEMBLY INSTRUCTION

Important note : Place all wooden part on a clean and smooth surface such as rug or carpet to avoid the part from being scratch

: Please follow the assembly instruction step by step

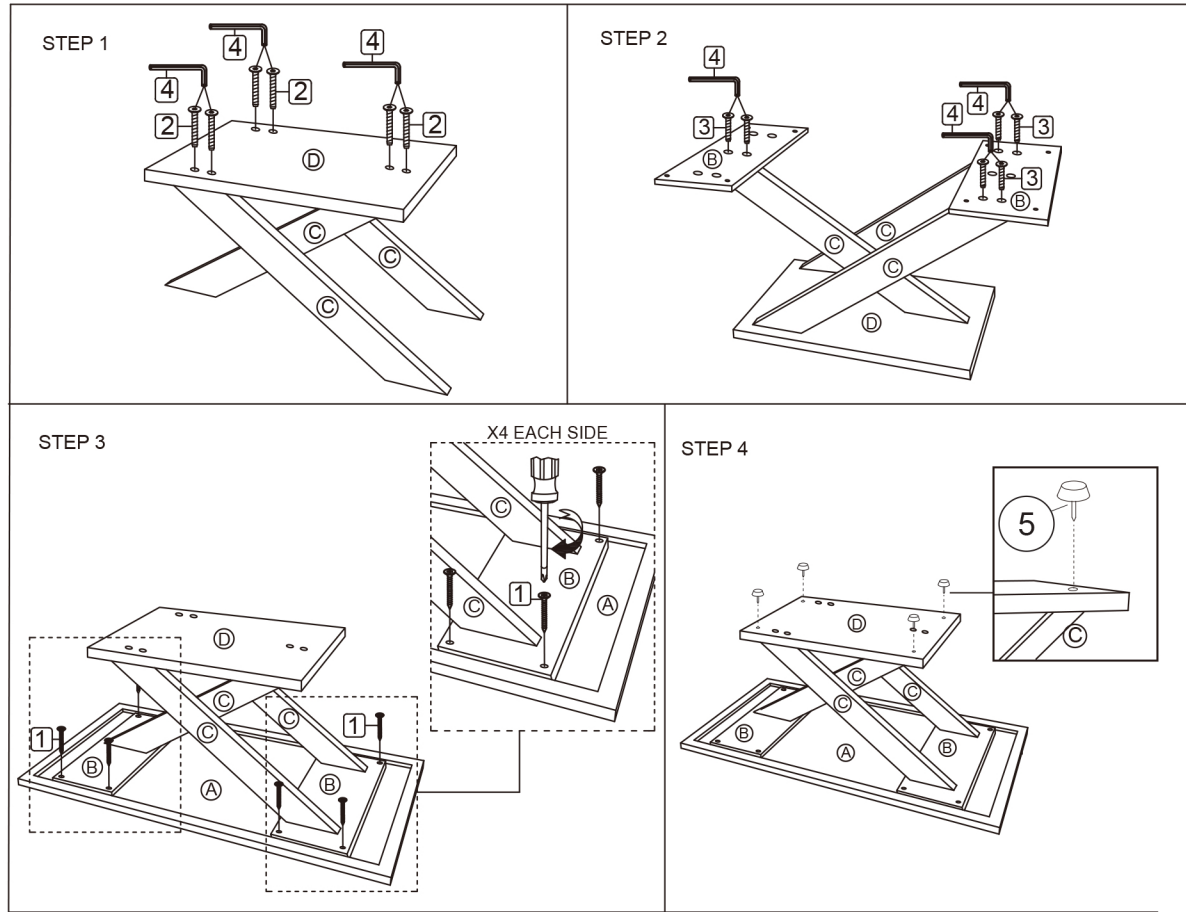
: Do not tighten all screw until the table fully set-up

PARTS LIST		
NO	DESCRIPTION	QTY
A	TOP PANEL	1
B	SUPPORT	2
C	LEG	3
D	BOTTOM LAYER	1

HARDWARE LIST		
NO	DESCRIPTION	QTY
1	CSK SCREW M4 X 20mm	8 PCS
2	JCBC SCREW M4 X 40mm	6 PCS
3	JCBC SCREW M4 X 25mm	6 PCS
4	ALLEN KEY	1 PC
5	5/8" NAIL LEG	4 PCS



COMPLETED ASSEMBLE



## END TABLE

## ASSEMBLY INSTRUCTION

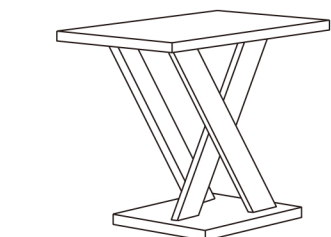
Important note : Place all wooden part on a clean and smooth surface such as rug or carpet to avoid the part from being scratch

: Please follow the assembly instruction step by step

: Do not tighten all screw until the table fully set-up

PARTS LIST - 2 PCS		
NO	DESCRIPTION	QTY
A	TOP PANEL	2
B	SUPPORT	4
C	LEG	6
D	BOTTOM LAYER	2

HARDWARE LIST - 2PCS		
NO	DESCRIPTION	QTY
1	CSK SCREW M4 X 20mm	16 PCS
2	JCBC SCREW M4 X 40mm	12 PCS
3	JCBC SCREW M4 X 25mm	12 PCS
4	ALLEN KEY	1 PC
5	5/8" NAIL LEG	8 PCS



COMPLETED ASSEMBLE

