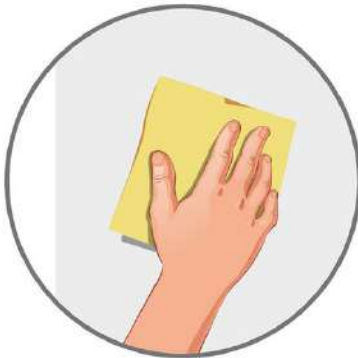
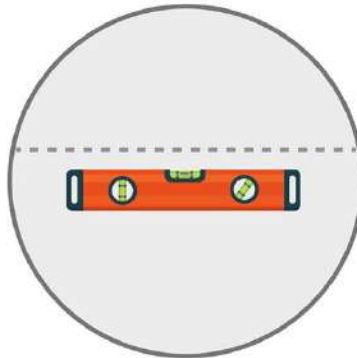


Easy installation



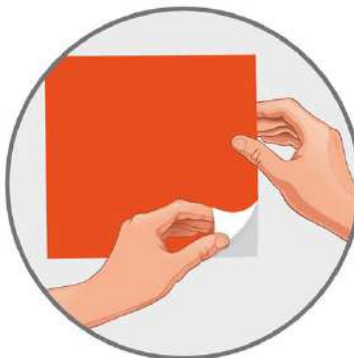
Clean the surface to be covered by using cleaning agent*.



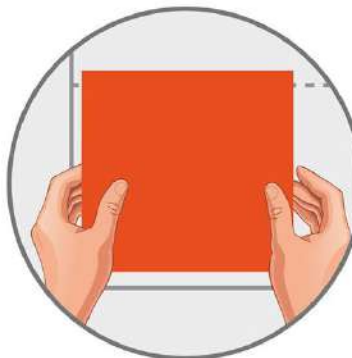
Draw a leveled guideline.



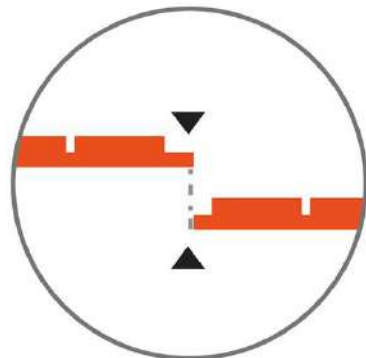
Position your tiles in the left corner of the installation area and cut the excessive edges.



Remove the plastic protector at the back of the tile. Ensure that the adhesive remains untouched.



Starting from the left corner, apply the tiles following the leveled line. Press the tile gently for maximum adhesion.

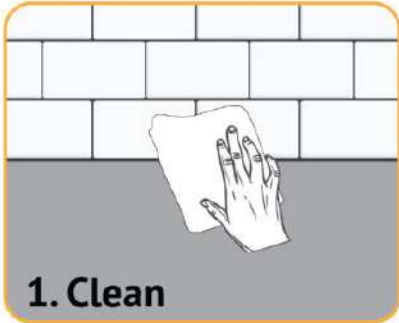


Continue installing the tiles next to each other, pressing firmly in the connection area.

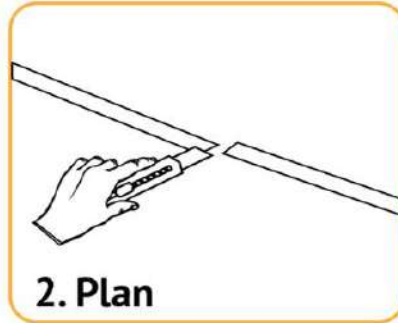
* For walls covered with latex paint and/or subject to high temperature variation, it is recommended to add a layer of spray adhesive to prevent the tiles from peeling.

BEAUTIFY TILE'S EDGES

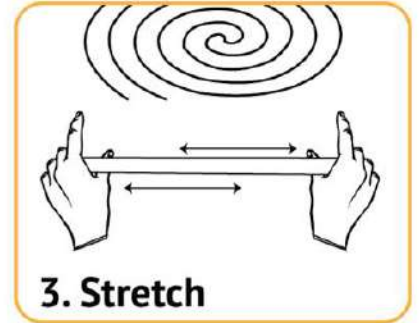
The solution for exposed tile edges



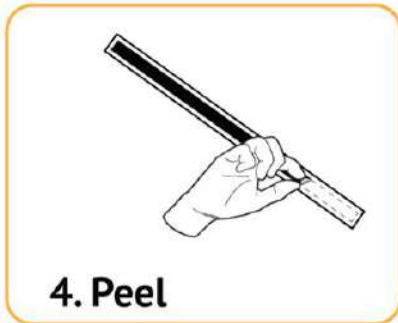
Clean the wall thoroughly



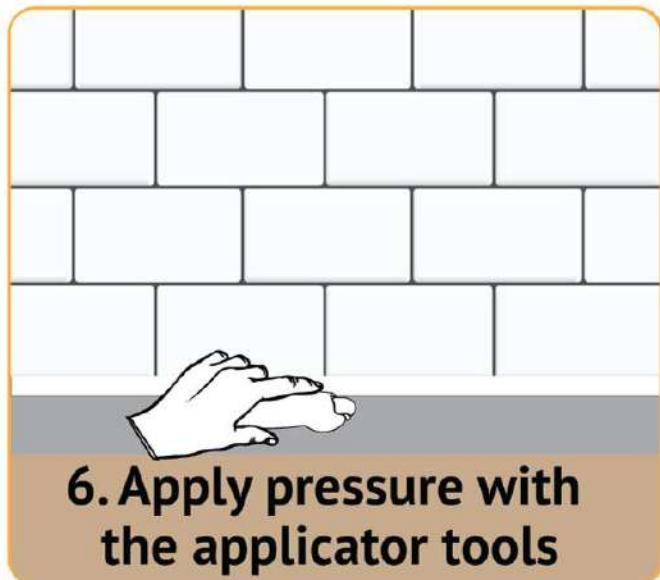
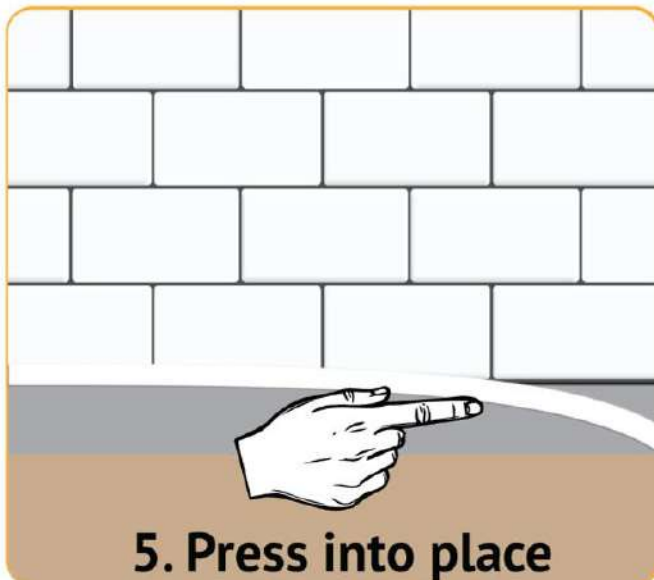
Plan out the location to be applied and cut the length of the trim to it.



Strip is a rolled-up pack, it bend a bit naturally. Roll it in the opposite so that it can stick properly.



Peel adhesive protective film and stick. Make sure the tape is entirely in contact with the wall, avoid partly stuck on the object being trimmed.



Molding Trim and Tools are NOT INCLUDED

check your area

INDOORS	FLOOR	OUTDOORS	TOILET WALL	WET AREAS	PERMANENTLY WET AREAS

check your surface

FLAT WALL	FLAT GLASS AND ACRYLIC	ALUMINIUM PLATE	PLASTIC	CERAMIC	WOODEN

GREASY	UNCLEAN	CRACKED	UNEVEN	MOULDY	DUSTY



If your gas stove does not have a back panel, you must allow a minimum of 16 inches or more (at least 40cm) of space to avoid exposing the stickers to open flames.



Gas stove WITH back control panel or metal cover



Gas stove WITH NO back control panel or metal cover



ATTENTION

To proper adhesion, make sure that surface is flat, clean and free of dust, dirt or grease.



MAINTENANCE

Wipe with a damp cloth and mild detergent.