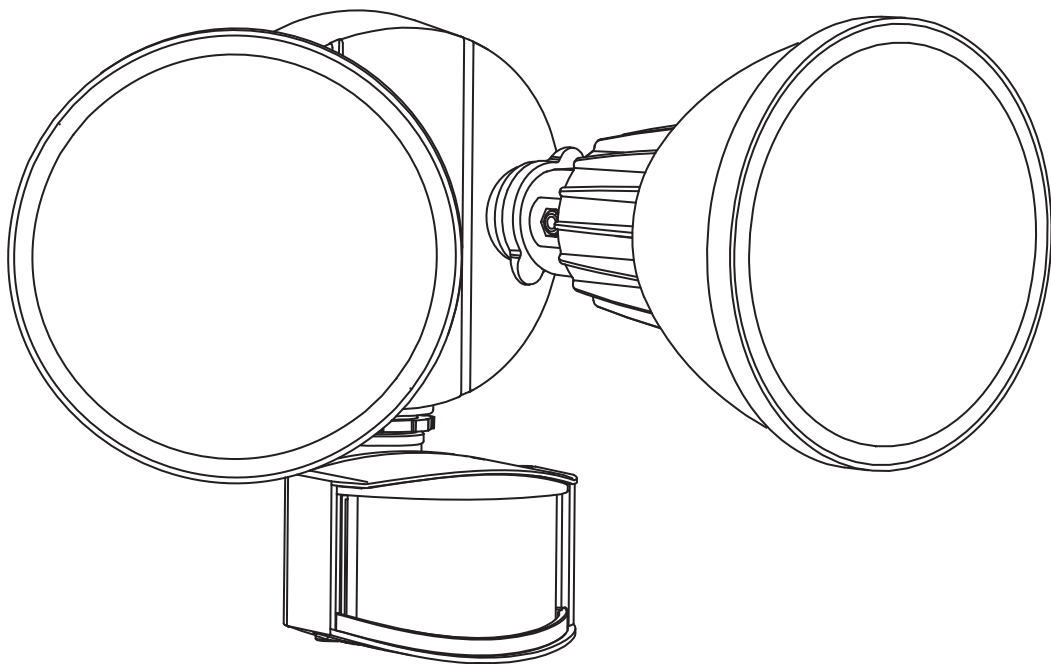




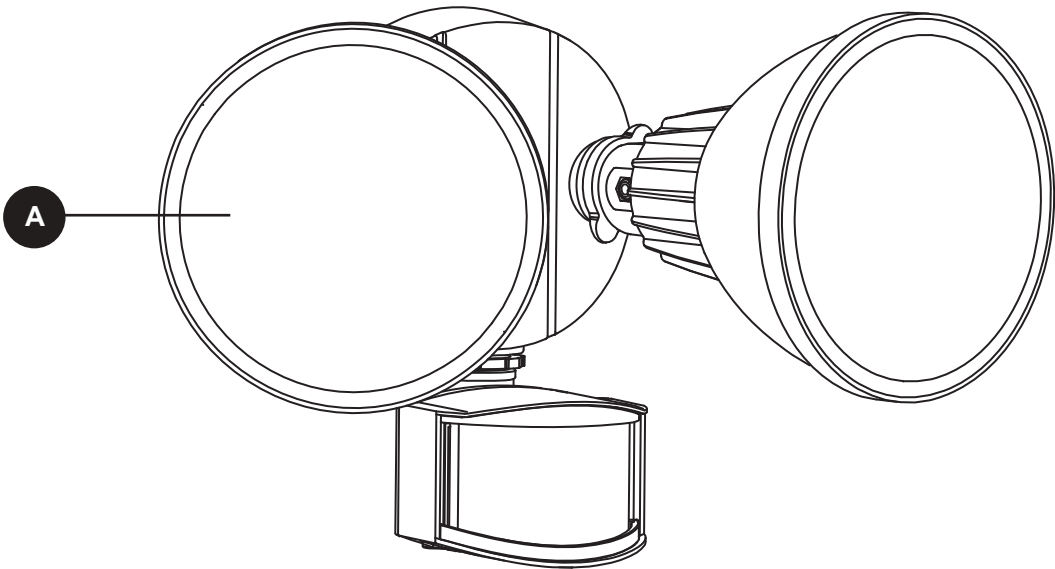
**MOTION-ACTIVATED FLOODLIGHT**  
**Owners Manual**

**MODEL #7635202053/7635202412**



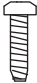



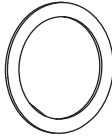
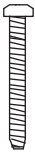
**IMPORTANT,**  
**RETAIN FOR FUTURE REFERENCE:**  
**READ CAREFULLY**

# PACKAGE CONTENTS



PART	DESCRIPTION	QUANTITY
A	Fixture	1

# HARDWARE CONTENTS (not shown actual size)

<b>AA</b>	<b>BB</b>	<b>CC</b>	<b>DD</b>	<b>EE</b>	<b>FF</b>
					
Screw	Wire Nut	Mounting Plate	Rubber Plug	Foam Pad	Mounting Plate Screw
Qty. 2	Qty. 3	Qty. 1	Qty. 1	Qty. 1	Qty. 1



## SAFETY INFORMATION

Please read and understand this entire manual before attempting to assemble, operate or install the product.



### WARNING:

- Consult a qualified electrician if you are not certain about the installation process. Always install wiring connections in accordance with local code, ordinances and the National Electric Code.
- Changes or modifications to this unit not expressly approved by the party responsible for compliance could void the user's authority to operate the equipment.
- This light fixture is designed to fit standard junction boxes as defined by the National Electrical Code.
- This light fixture is not dimmable.

This Class B digital apparatus complies with Canadian ICES-005.

NOTICE: This equipment has been tested and found to comply with the limits for a Class B digital device, pursuant to Part 15 of the FCC Rules. These limits are designed to provide reasonable protection against harmful interference in a residential installation. This equipment generates, uses and can radiate radio frequency energy and, if not installed and used in accordance with the instructions, may cause harmful interference to radio communications. However, there is no guarantee that interference will not occur in a particular installation. If this equipment does cause harmful interference to radio or television reception, which can be determined by turning the equipment off and on, the user is encouraged to try to correct the interference by one or more of the following measures:

- Reorient or relocate the receiving antenna.
- Increase the separation between the equipment and receiver.
- Connect the equipment into an outlet on a circuit different from that to which the receiver is connected.
- Consult the dealer or an experienced radio/TV technician for help.

## PREPARATION

Before beginning to assemble or installing lighting fixture, make sure all parts are present. Compare parts with package contents list and hardware contents list. If any part is missing or damaged, do not attempt to assemble, install or operate the product.

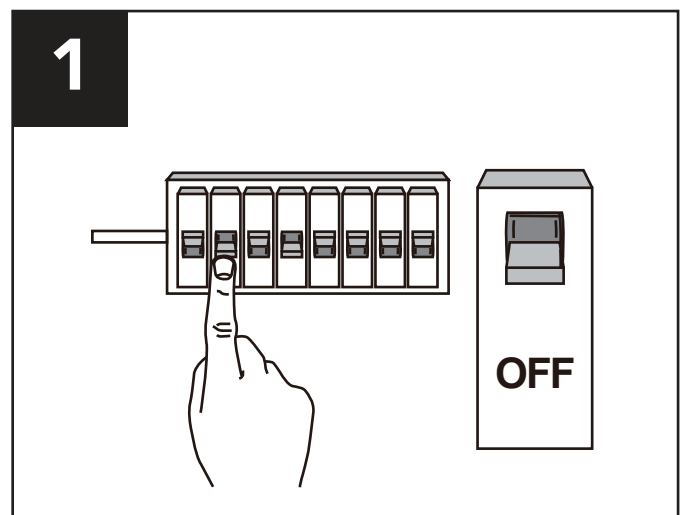
**Estimated Assembly Time: 20-30 minutes.**

**Tools Required for Assembly:** Phillips Screwdriver, Silicone Caulking Adhesive, Ladder.

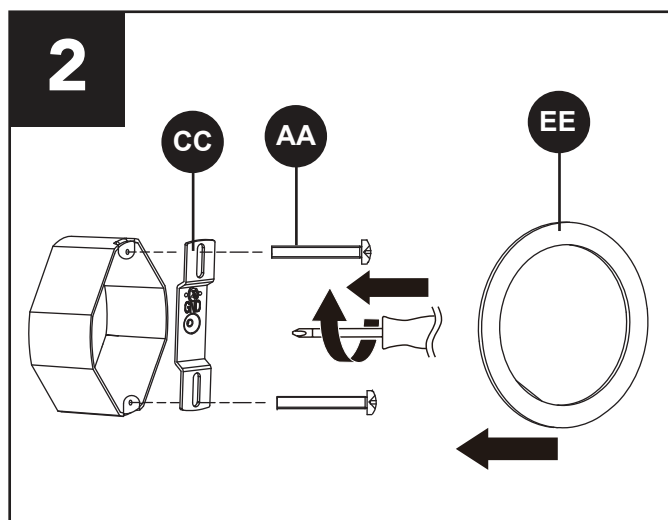
## INSTALLATION

1. Turn OFF power to work area at main circuit breaker or fuse box.

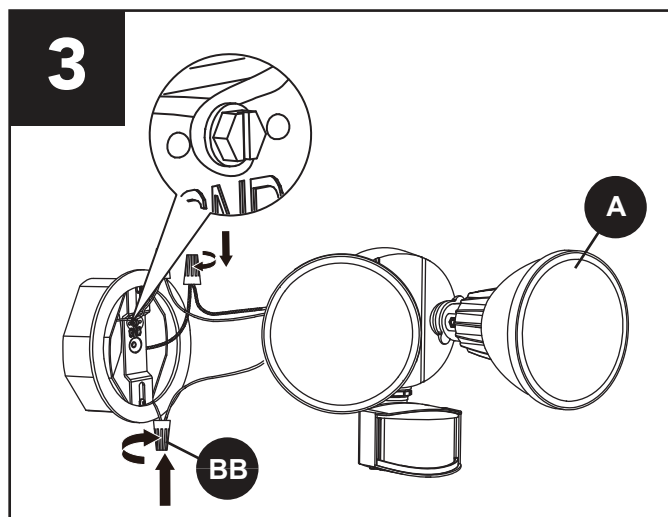
**CAUTION:** Do not rely on wall switch alone to turn off power.



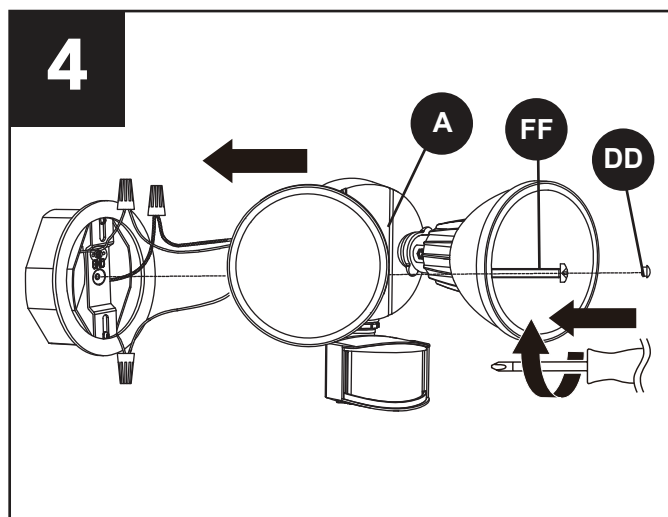
2. Attach the mounting plate (CC) to the junction box (not included) using the two screws (AA). Then attach the foam pad (EE) to the mounting plate (CC). This fixture can also be installed on the ceiling.



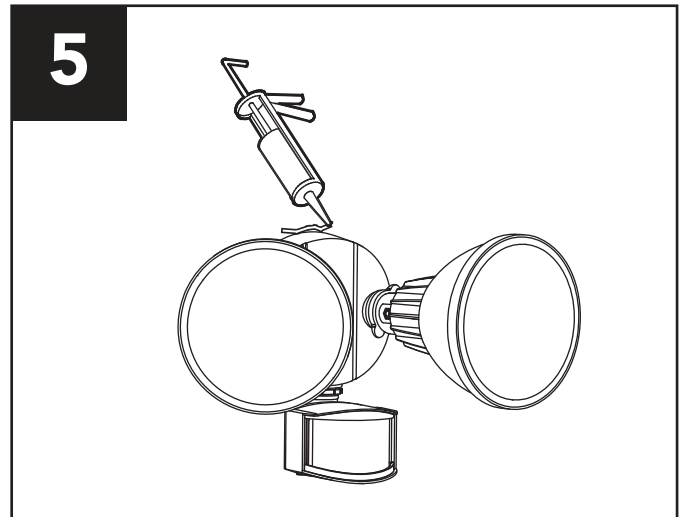
3. Connect the ground wire from the junction box to the ground screw on the mounting plate. Then connect the ground wire from the junction box to the ground wire from the fixture (A) by twisting a wire nut (BB) onto the bare ends of the wires. Connect the white wire from the junction box to the white wire from the light fixture by twisting a wire nut (BB) onto the bare ends of the wires. Connect the black wire from the junction box to the black wire from the light fixture by twisting a wire nut (BB) onto the bare ends of the wires. Position all the wires inside the fixture junction box.



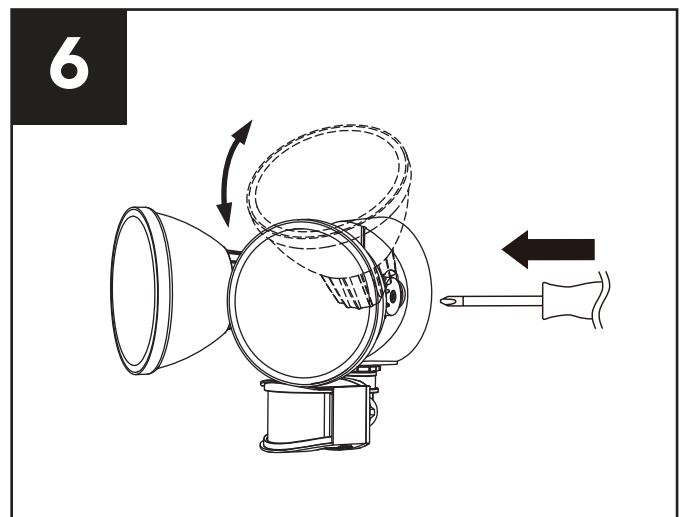
4. Attach the light fixture (A) to the mounting plate using the mounting plate screw (FF). Then insert the rubber plug (DD).



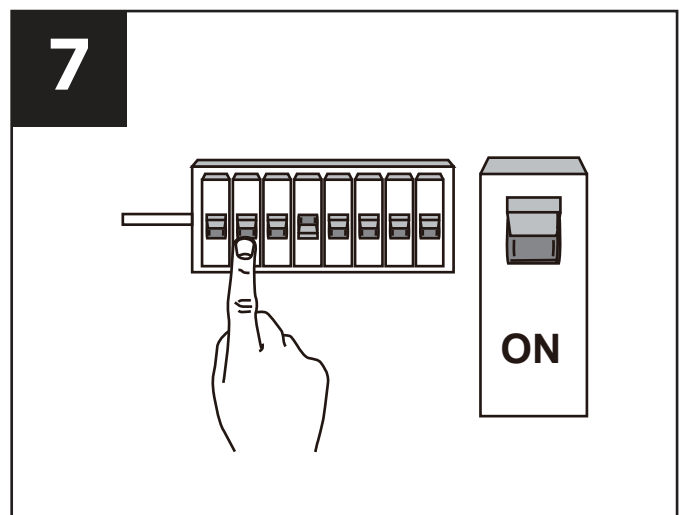
5. After mounting the fixture, apply silicone caulking compound completely around the perimeter of the cover plate where the back of the cover plate meets the mounting surface. Silicone caulking prevents water from seeping into the junction box.



6. Loosen the screws in the lamp heads to adjust the angle of the lamp heads.

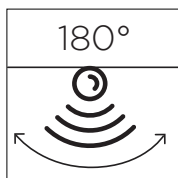
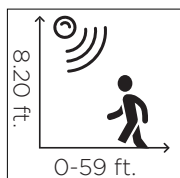


7. Turn ON power to work area at main circuit breaker or fuse box.



# OPERATING INSTRUCTIONS

MODE	TIME SETTING	DISTANCE SETTING	DESCRIPTION
TEST	TEST	Any setting	Tests the sensor's functionality even during daylight hours. When DISTANCE turns to L/M/H, after motion stops, the light will remain on full brightness for 5 seconds and then turns off. When DISTANCE turns to D2D, after motion stops, the light will remain on full brightness for 5 seconds and then turns to low brightness.
MOTION DETECTION (WITHOUT DUSK TO DAWN)	1, 3, or 10 (minutes)  Adjusts how long the light stays on after detecting motion before shutting off.	L, M, or H  L= 0-20 ft. M= 20-39 ft. H= 39-59 ft.  Adjusts how far the sensor detects motion.	Turns on at night only when motion is detected. Deactivates during daylight hours.
MOTION DETECTION (WITH DUSK TO DAWN)	1, 3, or 10 (minutes)	"D2D" Sensor defaults to 39-59 ft. coverage when set to "D2D".	Turns on at night and stays on at low brightness, then turns to full brightness if motion is detected. Deactivates during daylight hours.



## NOTE:

1. The sensor has a 14 second warm up period before it will detect motion. When turned on, please wait 14 seconds.
2. Manual Override: Force the fixture to override the TSET, SECURITY or DUSK TO DAWN mode so the light will stay on. Turn the light on manually from the wall switch. With the fixture already in the ON position, continuously flip the wall switch off and then back on twice in 3 seconds. There are two ways to revert back to the previous mode:
  - Once again flip the wall switch off, wait for more than 3 seconds and then turn back on.
  - If you leave the light on, the light will stay on for about 6 hours.

## CARE AND MAINTENANCE

- Clean surfaces with a mild, non-abrasive cleaner.

# TROUBLESHOOTING

PROBLEM	POSSIBLE CAUSE	CORRECTIVE ACTION
The light will not go on.	<ol style="list-style-type: none"> <li>1. No power to light.</li> <li>2. There may be a poor connection between the light and supply wires inside the junction box.</li> <li>3. The photocell may be detecting daylight or light from another source, preventing the light from coming on.</li> </ol>	<ol style="list-style-type: none"> <li>1. Check that the circuit is on, wall switch is on, and there is power to light fixture.</li> <li>2. Check supply wire connections.</li> <li>3. Select locations away from light sources, such as street lamps or other light fixtures.</li> </ol>
The light stays ON.	<ol style="list-style-type: none"> <li>1. The photocell window may be covered and it is not detecting light.</li> <li>2. The motion sensor may be picking up a heat source like an air vent, dryer vent, or brightly painted, heat-reflective surface.</li> <li>3. The motion sensor is in Manual Override.</li> </ol>	<ol style="list-style-type: none"> <li>1. Make sure the window is clean.</li> <li>2. Reposition the motion sensor.</li> <li>3. Flip the wall switch off, wait for 10 seconds and then turn the wall switch back on to exit Manual Override.</li> </ol>
The light comes on during the day.	<ol style="list-style-type: none"> <li>1. The motion sensor may be installed in a relatively dark location.</li> <li>2. The TIME switch is in the TEST position.</li> </ol>	<ol style="list-style-type: none"> <li>1. Reposition the fixture.</li> <li>2. Set the TIME to the 1 min., 3 min., or 10 min. setting.</li> </ol>
The light flashes.	<ol style="list-style-type: none"> <li>1. There is lightning, arc welding, mobile sources, or other such unstable light.</li> <li>2. The light from the fixture is being reflected back to the photocell from a nearby object such as rain gutter, overhang or another reflective surface.</li> <li>3. Heat is being reflected from other objects or the lamp heads.</li> </ol>	<ol style="list-style-type: none"> <li>1. When choosing an installation location, try to avoid areas where unstable light sources can occur.</li> <li>2. Try to reposition the fixture so that light reflected back to the detector is minimized or remove the reflector nearby.</li> <li>3. Reposition the motion sensor.</li> </ol>

## 3-YEAR LIMITED WARRANTY

---

If this product fails due to a defect in materials or workmanship within three (3) years from the date of purchase, return it along with proof of date of purchase and it will be replaced with the same or comparable model free of charge.

This warranty is void if damage or defect has resulted from accident, abuse, misuse or faulty repair. This warranty gives you specific legal rights and you may have other rights that vary from state to state.

IN NO EVENT WILL LIABILITY EXTEND TO ANY CONSEQUENTIAL, SPECIAL, INCIDENTAL OR INDIRECT DAMAGES OF ANY KIND ARISING OUT OF THE USE OR MISUSE OF THIS PRODUCT. SOME STATES DO NOT ALLOW THE EXCLUSION OR LIMITATION OF INCIDENTAL OR CONSEQUENTIAL DAMAGES SO THE ABOVE EXCLUSION OR LIMITATION MAY NOT APPLY TO YOU.

LUTEC USA LLC:  
149B Houston Rd Troutman NC 28166  
Ningbo UTEC Electric Co.,LTD  
CN8, Far East Industry Park, Yuyao, China  
[www.lutec.com](http://www.lutec.com)  
[service@lutec.com](mailto:service@lutec.com)

**Please call our Customer Service line at 877-714-8669  
for assistance Monday - Friday 9 a.m. to 5 p.m. EST**

Printed in China