

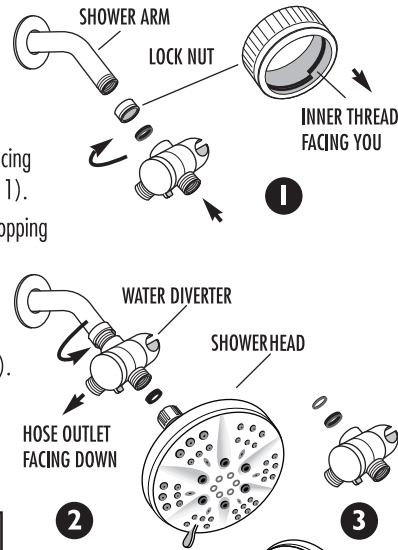
# Notilus™

## Premium Combination Shower

### INSTALLATION/USE INSTRUCTIONS

#### To Connect

1. Remove old showerhead. Screw Lock Nut, with single Inner Thread facing YOU, onto shower arm to end of its thread, but DO NOT tighten (Fig. 1).
2. Screw Water Diverter with Thick Washer in place onto Shower Arm stopping at last possible position when Hose Outlet is facing DOWN (Fig. 2).
3. Counter-tighten Lock Nut in reverse direction, until it presses tightly against Diverter, thereby locking it in this position.
4. Screw Showerhead with its Washer in place onto Front Outlet (Fig. 2).
5. Turn ON water to test connection. If leakage occurs, disconnect Diverter and add Thin Washer (spare) to Thick Washer already inside its neck (Fig. 3), then reconnect and test again.



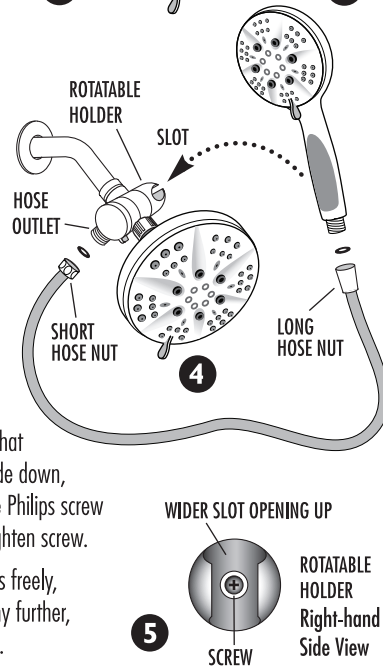
#### If Leakage Occurs Due to Short Shower Arm Threads, DO NOT Use Lock Nut

To stop leakage, your Shower Arm end must always reach Washer inside Diverter and press against it. If your Shower Arm with Lock Nut on it does not have enough threads to reach Thick Washer inside Diverter, remove Lock Nut and DO NOT use it. Add Thin Washer to Thick Washer, if needed, for better alignment (Thin Washer compensates for about 1/2 thread turn).

6. Screw Short Hose Nut with Hose Washer in place onto Hose Outlet (Fig. 4). Screw Long Hose Nut with Hose Washer in place onto Hand Shower handle and place Hand Shower into Rotatable Holder.

If Hand Shower does not fit well into Holder Slot, check to make sure that wider side of Holder's Slot opening is on TOP (Fig. 5). If Holder is upside down, rotate it 180° into correct position. If it is too tight to rotate, loosen the Philips screw on the inner Slot wall, then rotate Holder into correct position and re-tighten screw.

If Hand Shower does not stay UP and falls down because Holder rotates freely, tighten the Philips screw on the inner Slot wall. If it does not tighten any further, call Customer Care to get free replacement sent to you within 24 hours.

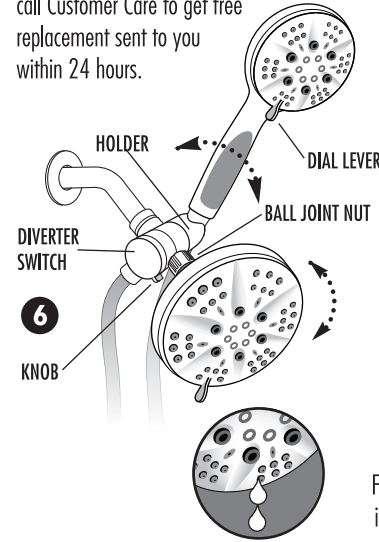


#### IMPORTANT: Hand tighten connections ONLY. DO NOT use wrench or pliers.

DO NOT overtighten - this may cause washer to bend and be pushed into shower arm. Use plumber's tape ONLY if needed on shower arm thread if washers fail to stop leakage. DO NOT use plumber's tape on any other connections.

**NOTE:** If your shower arm has a ball on the end instead of a thread, this old type of shower arm will not work with this and most other showers on the market today. Your existing shower arm can be easily replaced with a standard 1/2" thread shower arm available at most plumbing supply stores.

If it appears that you are missing Washer(s) or other part(s), or have a defective part, call Customer Care to get free replacement sent to you within 24 hours.



#### Tips For Best Performance

As with all combination showers, using both showers together always causes water pressure to drop in each showerhead. Use showerhead or hand shower individually to maximize water pressure for high-power performance. Use lower-pressure combined dual-shower application only for gentle pampering, wider flow coverage and targeting of different body areas.

**NOTE:** This combination shower system is equipped with water flow regulator that limits maximum water flow to 2.5 gallons (9.5 liters) per minute at 80 psi water pressure when both showerheads work together or independently.

#### Cleaning Instructions

To maintain proper working condition, clean flexible nozzles by rubbing with finger or soft bristled toothbrush, or soak in 50% white vinegar/50% water solution. If, over time, a loss of water pressure occurs due to build-up of residue and mineral deposits inside water flow regulator, you can remove Flow Regulator (Fig. 7) and soak it in white vinegar for 1/2 hour. DO NOT use harsh chemicals, heavy-duty cleaners or abrasives. This may damage parts or finish and may void warranty.

*If you have installation problem, please DO NOT return this product before calling first.*

**For Questions on Installation or Part Replacement Call Toll Free**

**1-888-869-4010**

Mon. - Fri. 9:00 AM - 4:00 PM Eastern Time

Model 3345

[www.ipshowers.com](http://www.ipshowers.com)

A112.18.1 Maximum Flow 2.5 Gallons Per Minute 9.5 Liters Per Minute  
US Patent No. 7,373,954 B2 Made in China

#### To Use 3-way Water Diverter

To change water flow, turn Diverter Switch 90° with Knob pointing in the shutoff direction (Fig. 6). Point Lever STRAIGHT to use Hand Shower, DOWN to use Showerhead or UP to use combination of both.

#### To Adjust Angle of Hand Shower and Showerhead

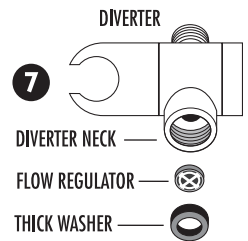
Rotate Holder in vertical directions to set desired Hand Shower angle. Swivel Showerhead around its Ball Joint Nut to desired position.

#### To Use 6-function Hand Shower Dial

Turn Dial Lever to select desired water pattern. Choose from Rain, Massage Mist, Rain/Massage, Rain/Mist or Pause settings. When turning Showerhead dial, we recommend that you hold Showerhead with free hand to prevent accidental loosening of Diverter connection.

#### To Save Water while Lathering or Shampooing

Turn Dial Lever of Hand Shower or Showerhead to PAUSE (shut-off) mode. For your safety (to prevent pressure buildup), PAUSE mode has water dripping instead of complete shut-off. After use, DO NOT leave Dial set to Pause mode.



#### LIMITED LIFETIME WARRANTY

Interlink will repair or replace any of this product's parts that exhibit defects in workmanship or materials for above stated period from date of purchase. If malfunction occurs, send only defective part(s) with proof of purchase to Customer Service Department at the address listed below. This warranty does not cover product purchased from unauthorized distributors, malfunction or damage due to accident, misuse, use of harsh chemicals or failure to follow any included written instructions. This warranty gives you specific legal rights. You may also have other rights that vary where you reside.

Interlink Products 1315 E. Elizabeth Ave., Linden, NJ 07036