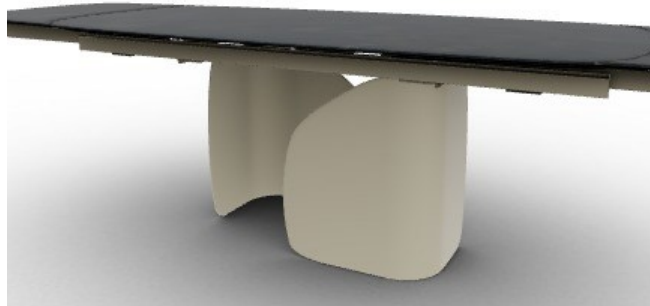


## TWINS



Twins is a table with a great visual impact thanks to its base, made up of two curved and moulded sheet elements that, like two wings, make the top take flight visually. There are many finishes available, allowing you to interpret the table in a classic or modern way.

<b>Total Height:</b>	29 5/8 inches
<b>Width:</b>	78 3/4 (97.6376 3/4 ) (116.5352 5/8 ) inches
<b>Depth:</b>	39 3/8 inches
<b>Frame:</b>	METAL / MATT PEARL BEIGE
<b>Legs (outer side):</b>	METAL / MATT PEARL BEIGE
<b>Legs (inner side):</b>	METAL / MATT PEARL BEIGE
<b>Top and extension:</b>	COUPLED CERAMIC AND GLASS / CALACATTA BLACK (MATT)