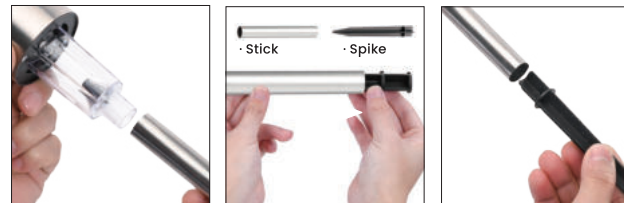


Lamp x16	Spike & Stick x16



① Gently twist off the lid.      ② Move the switch to the ON position.      ③ Cover the lid.



④ Install the stick onto the lamp body.      ⑤ Pull out the spike.      ⑥ Reverse the spike, insert into the stick.



⑦ Complete the installation.

**How to use**

- Before the first use, turn the switch on and allow the light to charge for a minimum of 8-12 hours. Charging it fully will optimize its performance.
- The light is designed to turn on automatically at dusk and turn off at dawn. It will function seamlessly, providing illumination when needed.

**How to replace the battery**

If you need to replace the battery, kindly adhere to the following instructions:

- Locate the switch underneath the solar panel and turn it to the OFF position.
- Carefully remove the old battery and ensure proper recycling or disposal.
- Install a new battery of the same type.

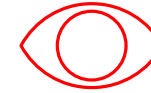
<b>Brand</b>	Gigalumi
<b>Product Type</b>	Path Light
<b>Design</b>	Classic
<b>Fixture Color</b>	Silver
<b>Material</b>	PP & Stainless Steel
<b>Light Color</b>	Warm White / Cool White
<b>Package Quantity</b>	16
<b>Number of Light Sources</b>	1 LED Per Item
<b>Power Source</b>	Solar Powered
<b>Light Output</b>	3 Lumens
<b>Light Duration</b>	8-10 Hours
<b>Charging Time</b>	5-6 Hours
<b>Rechargeable Batteries</b>	1*1.2 Volts, 100Mah, NiMH AA Batteries Required. (Included)
<b>Ingress Protection Ratings</b>	IP55



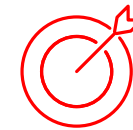
Official Website



Amazon Store



At Gigalumi, we are committed to making a real impact on global carbon neutrality and contributing to the happiness of families worldwide.



We are born to provide every home with innovative solar-powered products that comfort people's family life.

---

---

---

---

---

---

---

---

---

---

Problem	Solution
<ul style="list-style-type: none"> <li>· The lights are not turning on in the evening.</li> <li>· The nightly runtime is shorter than expected.</li> <li>· The lights appear dim.</li> <li>· The lights are flickering.</li> </ul>	<ul style="list-style-type: none"> <li>· If applicable, ensure that the switch is in the ON position.</li> <li>· Clean the solar panel to remove any dirt or debris.</li> <li>· Make sure there are no objects or shadows obstructing sunlight from reaching the solar panel.</li> <li>· Keep the lights away from any other direct light sources.</li> <li>· If applicable, toggle the switch back and forth several times.</li> <li>· If applicable, place the light bulb facing upwards and gently tap it on a tabletop.</li> <li>· If needed, reinstall or replace the battery using appropriate methods (e.g., unscrewing).</li> </ul>

If the problem persists, please don't hesitate to reach out to us at [service@gigalumi.com](mailto:service@gigalumi.com). To expedite the process, kindly provide your order number and include a photo or video to help us better understand the issue.

### Placement

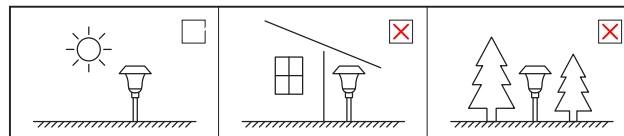
- Choose an outdoor location for the solar panel that receives a minimum of 8 hours of direct sunlight each day.
- The amount of sunlight the solar panel receives will vary based on factors such as geographical location, weather conditions, and seasonal light availability.
- Avoid placing the solar light near bright light sources, such as street lights or lamp posts, as this may cause the light to turn off automatically.
- If the soil in your garden is solid, it is recommended to make a hole in the ground before inserting the spike. Avoid pressing the solar panel with your hands or heavy objects.

### Safety

- It is important not to throw batteries in domestic garbage or dispose of them in a fire. Batteries contain hazardous materials and should be recycled.
- Do not use solar light in high temperatures or corrosive environments.
- The packaging of the product contains small parts that could be swallowed by children. Please keep it away from children and pets.

### Warranty

- Gigalumi products are covered by a 6-month warranty.



- It is essential to keep the solar panel clean and free of dirt and debris. If the solar panel becomes dirty, it will hinder the battery from fully charging, resulting in shorter battery life and potential light malfunction. We recommend regularly cleaning the solar panel with a dampened cloth or paper towel.
- If you prefer to store your lights indoors, it is advisable to remove the battery. This will help maintain the battery's longevity.

✉ [service@gigalumi.com](mailto:service@gigalumi.com)

Facebook [@Gigalumi.fans](https://www.facebook.com/Gigalumi.fans)

Instagram [@gigalumi\\_](https://www.instagram.com/gigalumi_)

Pinterest [@gigalumi](https://www.pinterest.com/gigalumi)

TikTok [@Gigalumi\\_](https://www.tiktok.com/@Gigalumi_)



Official Website



Amazon Store