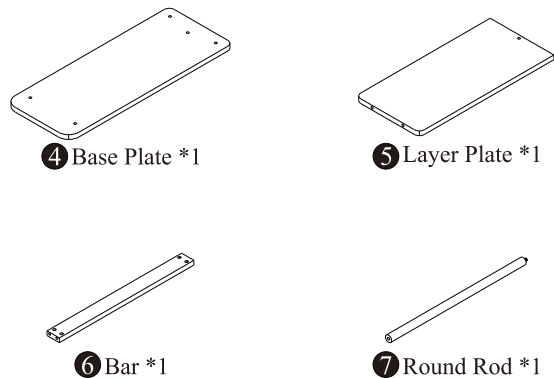
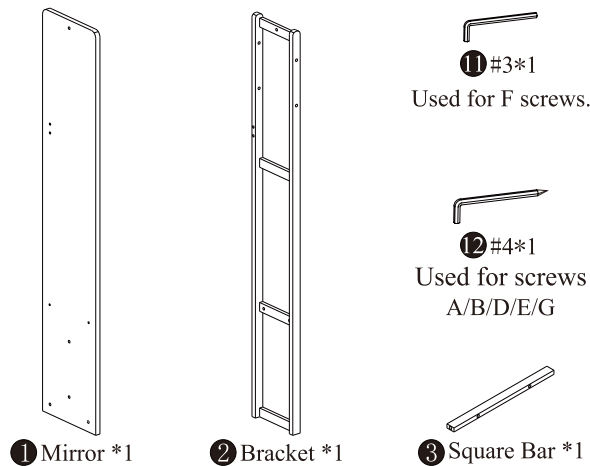
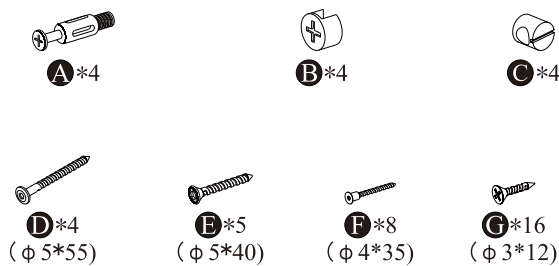


# Mirrored Multifunctional Hanger Accessories List



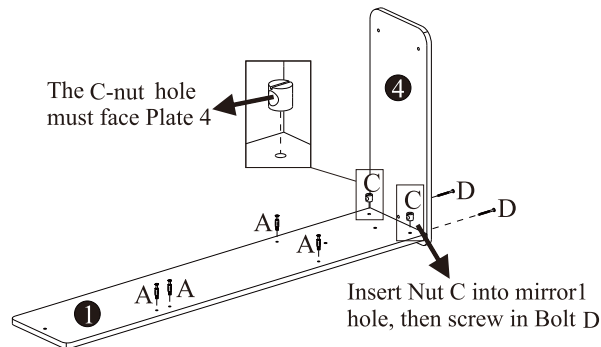
Sort screws by shape



## Installation Steps [Before installation, sort out the parts]

1

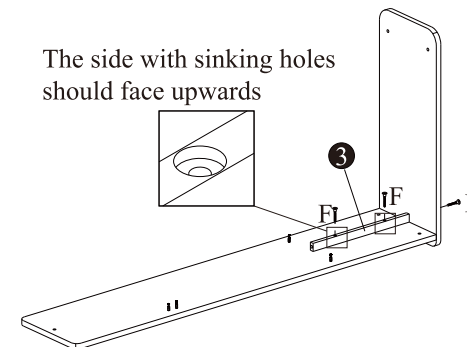
① \*1  
④ \*1  
① \*4  
② \*2  
② \*2



2

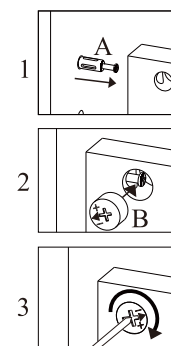
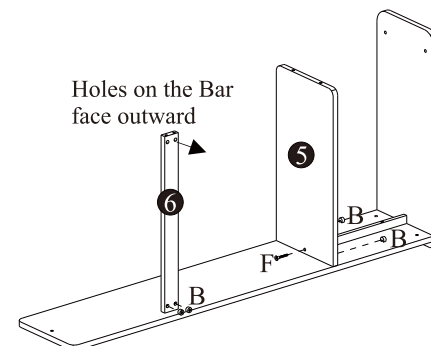
③ \*1  
③ \*3

The side with sinking holes should face upwards



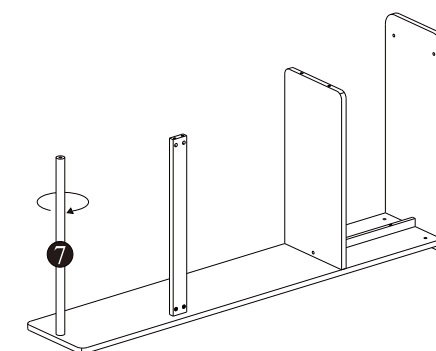
3

⑤ \*1  
⑥ \*1  
③ \*1  
④ \*4



4

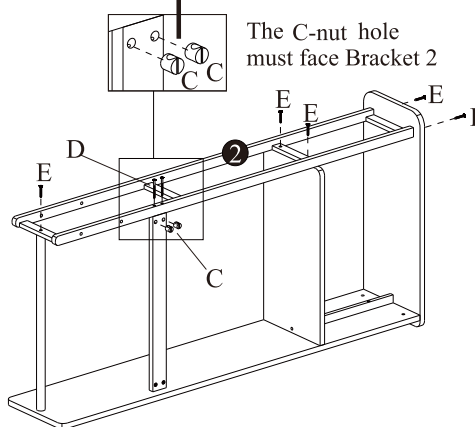
⑦ \*1



5

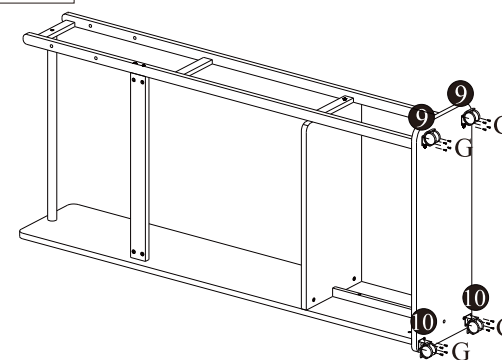
② \*1  
③ \*2  
③ \*2  
④ \*5

Here, use screw D and nut C. First, place nut C into the hole, then screw in screw D



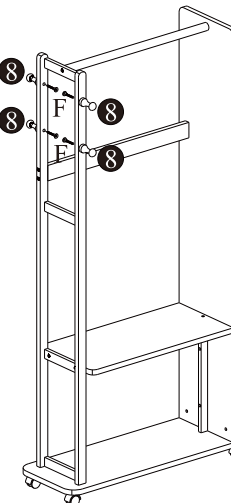
6

⑨ \*2  
⑩ \*2  
⑩ \*16



7

⑧ \*4  
⑧ \*4  
③ \*4



## Installation & Usage Guidelines

- 1.Ensure all components are fully tightened during installation, and check joint stability after assembly.
- 2.Even Distribution: Hang items evenly to prevent tipping.
- 3.Place heavy items on the lowest tier. Avoid hanging overweight objects  
(e.g., water-soaked clothes, gym equipment).Overloading may cause deformation.
- 4.No Climbing: Keep children from climbing or swinging on the rack.
- 5.Periodically inspect the tightness of panel connectors, as prolonged use or movement may cause loosening.
- 6.Avoid Moisture & Heat: Keep away from radiators, flames, and humid areas (e.g., bathrooms).
- 7.No Direct Sunlight: Prolonged UV exposure may cause cracking or fading.
- 8.Cleaning: Wipe with a soft cloth and neutral cleaner. Avoid acids or abrasive tools.
- 9.Storage: Disassemble and store in a dry, ventilated area without stacking.

