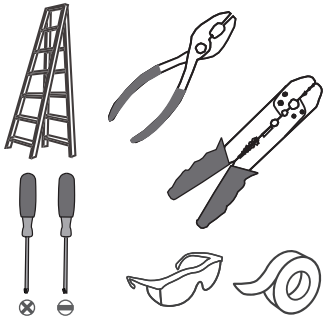
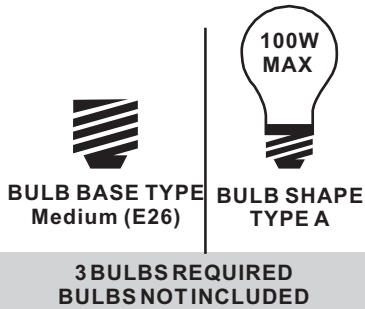


# Installation Guide

## Tools Required



## Light Source



## ⚠ Warnings and Cautions

Turn off the electricity at the circuit breaker before installation. Consult a licensed electrician if in doubt about installation.

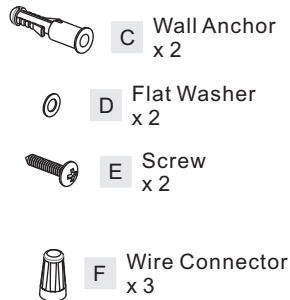
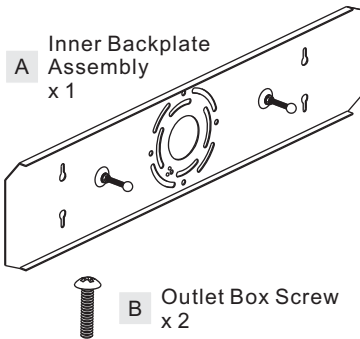
Turn off power to the fixture and allow the bulbs to cool before replacing.

## Package Contents

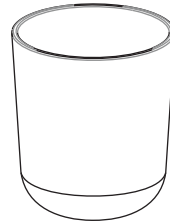
**Preparation:** Identify and inspect all parts before beginning the installation.

Missing or damaged parts? Contact your original place of purchase.

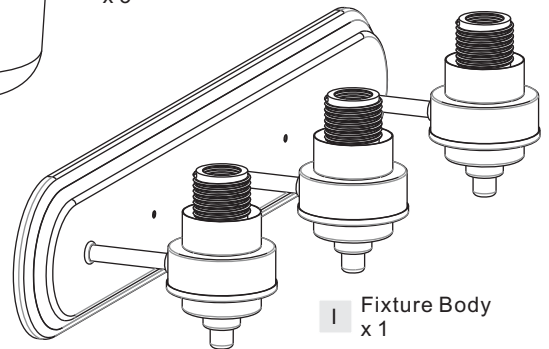
### PARTS BAG



G Socket Collar  
x 3



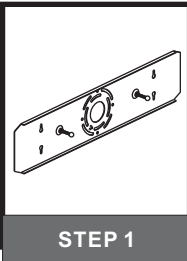
H Shade  
x 3



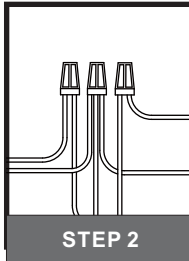
I Fixture Body  
x 1

## Table of Contents

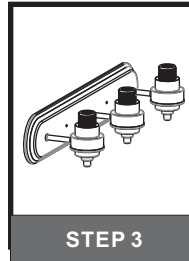
### Inner Backplate Assembly



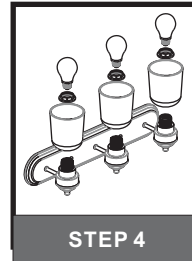
### Wiring



### Fixture Body



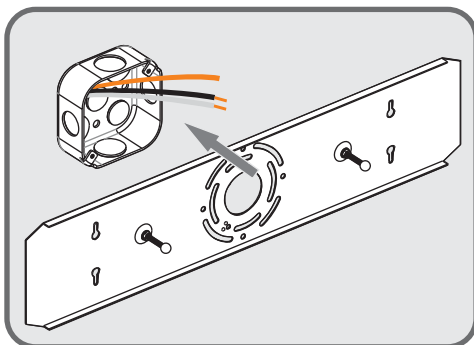
### Shade & Bulb



## STEP 1

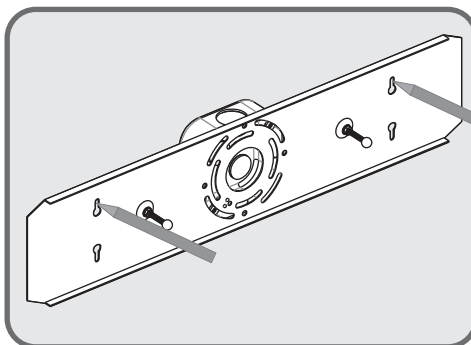
1

Fit inner backplate to outlet box



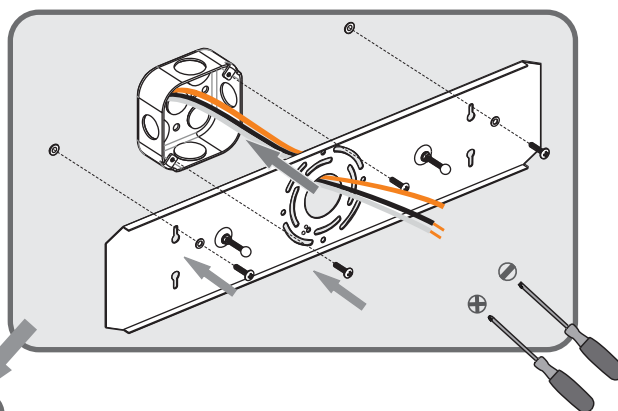
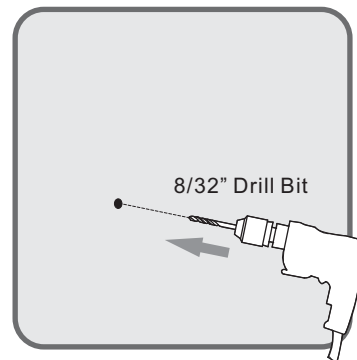
2

Mark Anchor Holes Location on the Wall

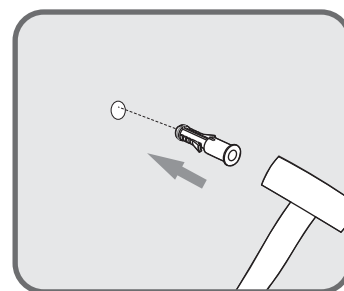


3

Drill Holes for Anchors from marks



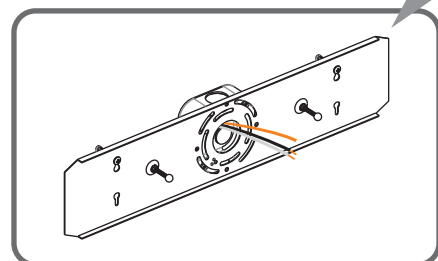
Install Inner Backplate Assembly



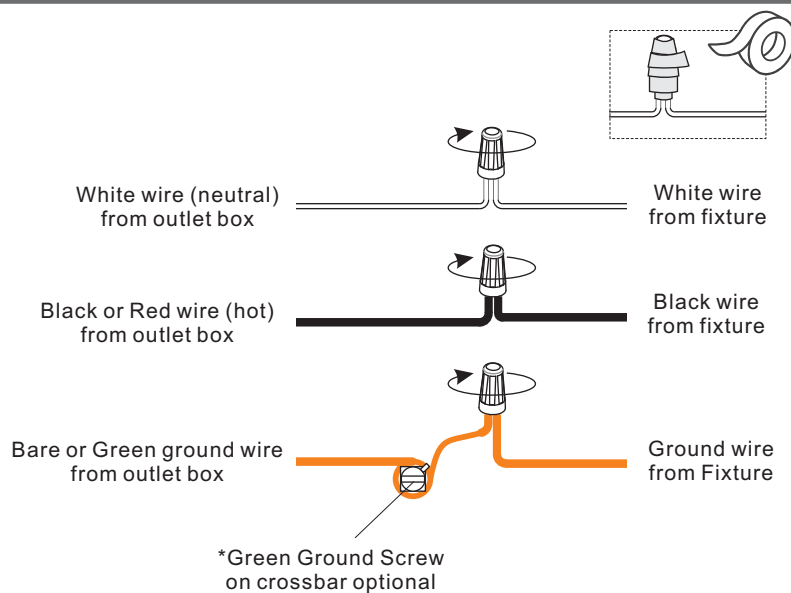
Install Wall Anchors

5

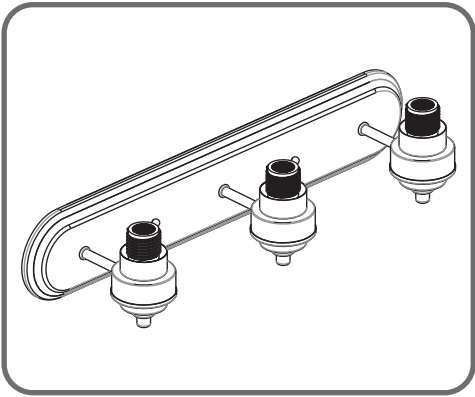
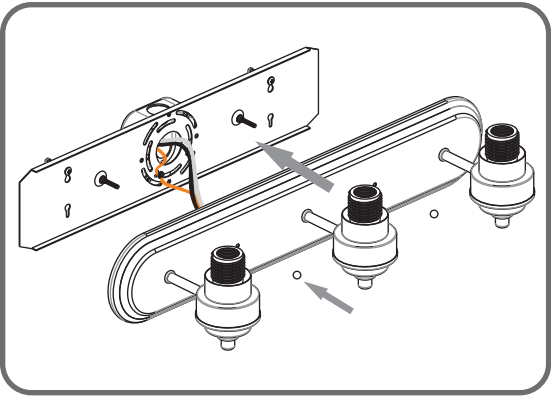
4



## STEP 2



**STEP 3**



**STEP 4**

