

Specifications:

Installation:	Undercounter
Interior Dimensions:	45" w x 12 1/2" d x 4 1/4" h
Exterior Dimensions:	47 3/4" w x 15" d x 6 1/4" h
Material:	Solid surface
Weight:	44 lbs
Overflow:	Yes
Finishes:	M - Matte white G - Gloss white MB - Matte Black
Faucet Holes:	N/A
Cut-out Size:	44 1/2" x 12" (template available upon request)
Drain Hole Size:	Ø 1 3/4"



Features:

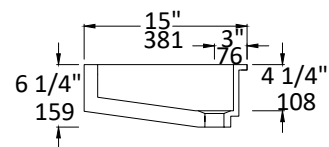
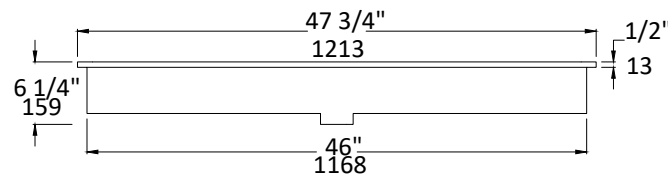
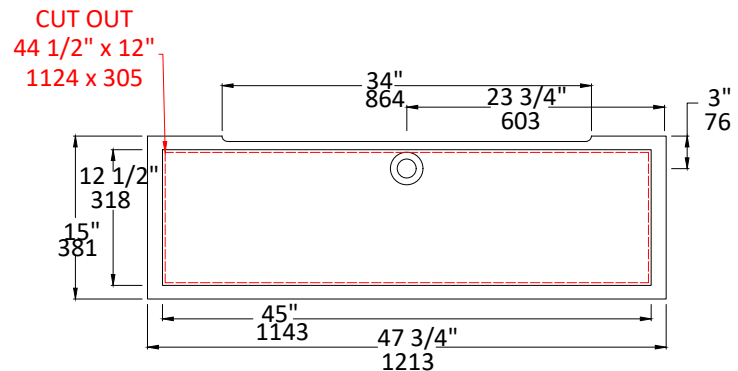
- Solid surface sink with overflow
- Material is stain, scratch, chemical, and impact resistant
- Current cut-out template can be requested
- Single glazed

Codes + Standards:

- Meets and exceeds applicable national codes and standards



compliant when installed to specific requirements of this regulation



Recommended Items:

- European drain with overflow
 - 7100-13OF
 - 7100-16OF

Care + Maintenance:

- To prevent damage to the solid surface material, hot objects and open flame should not be placed in direct contact with the surface

[Click here](#) to find out more about proper care and maintenance

LACAVA reserves the right to revise any dimension or information on this sheet without notice. Dimensions are nominal and may vary within an industry accepted tolerance of 1/4". Drawings provided herein are meant to give the user an idea of the product and are not made to scale.

Revised: 11/06/25